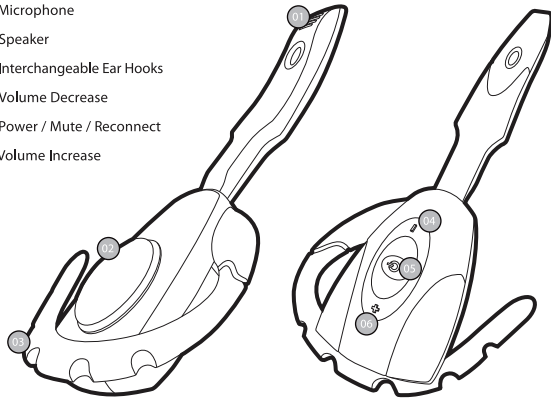


## wireless headset

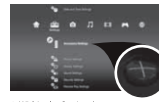
Model : F-SL001A

Maximise your game play with this Bluetooth headset. Hear your enemies creeping up behind you on your surround sound system, whilst being able to converse with your fellow team members on the next best course of action.

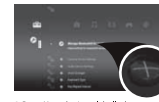
- 01 | Microphone
- 02 | Speaker
- 03 | Interchangeable Ear Hooks
- 04 | Volume Decrease
- 05 | Power / Mute / Reconnect
- 06 | Volume Increase



### Pairing your headset



1. Within the Settings\* menu, press X on Accessory Settings.



2. Press X on the icon labelled: Manage Bluetooth\* Device.



3. Press X on Yes to register your Bluetooth\* Device.



4. At the next screen, prepare your headset (from off) to be paired with the PS3\* by holding down the power button continuously until the LEDs are flashing alternate Blue & Green.



5. Whilst button is held down and LED is flashing BLUE & Green, press X to Start Scanning. Once the scan is complete, the PS3\* will recognise Bluetooth\* wireless technology devices within range.



6. Locate the product from the list of available devices and press X.



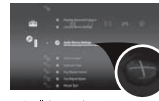
7. Press X to enter 0000 (four zeros) as the Pass Key and press X on OK.



8. You will be taken to a new screen stating: Register completed.



9. Press O twice on your controller to go back to Accessory Settings.



10. Scroll down and press X on Audio Device Settings.



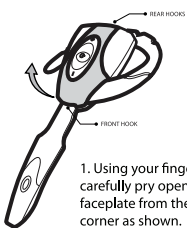
11. Choose the product as your input and output device from the lists. Press X to confirm your choices.



12. Scroll down and press X on OK. Your Bluetooth\* Headset is now ready to use...enjoy :)

### Changing the earhooks

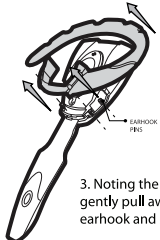
This headset comes with two earhooks, each marked [L] for the left ear and [R] for the right ear. After selecting the appropriate earhook, follow the instructions below:



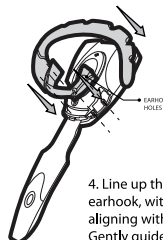
1. Using your fingernail carefully pry open the shiny faceplate from the front corner as shown.



2. Once clear of the body, unhook the back and then lift clear from the body



3. Noting the 4 earhook pins, gently pull away the existing earhook and store safely.



4. Line up the chosen earhook, with the pins aligning with the holes. Gently guide the earhook down into place until set in position.



5. Hook the back of the faceplate into the back hook slot, then gently push the front down until it clicks into place.

### Charging and using the headset

The headset contains a rechargeable Li-ion battery. Prior to using the headset for the first time, it is strongly recommend to fully charge the battery for 3 hours.

#### To charge:

- 1) Connect the USB cable to your PS3® or computer
- 2) Connect the mini USB to the headset's charging socket
- 3) LED lights Green whilst charging, green put out when charged

Note: Do not try to pair the headset to the console, when the headset is charging. If it is charging it will not pair with the PS3®

#### Operating your headset:

- 1) To power on your headset, press and hold the power button for 1 second until you see a BLUE & Green LED flash
- 2) To fit your headset comfortably, lift the earhook and loop it around your ear. Position the speaker in your ear for optimal audio performance.
- 3) Adjust the volume using the + / - buttons
- 4) To mute, press the power button briefly (less than 1 second), and repeat the process to un-mute
- 5) To power off your headset, press and hold the power button for 3 seconds, the LED will turn Green and then disappear, your device is now off.

Note: to reconnect your headset to your PS3® at any time, just press the power button

#### Recycling and disposal instructions



This marking indicates that this product should not be disposed with other household wastes throughout the EU. To prevent possible harm to the environment or human health from uncontrolled waste disposal; recycle it responsibly to promote the sustainable reuse of material resources. To return your used device, please use the return and collection systems or contact the retailer where the product was purchased. They can take this product for environmentally safe recycling.



Manufacturer's declaration that the product complies with the requirements of the applicable EC Directives.

FCC Caution:

This device complies with part 15 of the FCC Rules. Operation is subject to the following two conditions: (1) This device may not cause harmful interference, and (2) this device must accept any interference received, including interference that may cause undesired operation.

Any changes or modifications not expressly approved by the party responsible for compliance could void the user's authority to operate the equipment.

NOTE: This equipment has been tested and found to comply with the limits for a Class B digital device, pursuant to Part 15 of the FCC Rules. These limits are designed to provide reasonable protection against harmful interference in a residential installation. This equipment generates, uses and can radiate radio frequency energy and, if not installed and used in accordance with the instructions, may cause harmful interference to radio communications. However, there is no guarantee that interference will not occur in a particular installation.

If this equipment does cause harmful interference to radio or television reception, which can be determined by turning the equipment off and on, the user is encouraged to try to correct the interference by one or more of the following measures:

- Reorient or relocate the receiving antenna.
- Increase the separation between the equipment and receiver.
- Connect the equipment into an outlet on a circuit different from that to which the receiver is connected.
- Consult the dealer or an experienced radio/TV technician for help.

The device has been evaluated to meet general RF exposure requirement. The device can be used in portable exposure condition without restriction.