

ssontong

A16W
Dash Cam

USER MANUAL



SD card has been inserted into the dash cam
Please use the **original CAR CHARGER** to charge the WiFi dash cam

PACKAGE CONTENTS

NOTE: If you just buy the Front dash cam, Package included 128GB SD Card, NOT included REAR camera.

If you buy the dash cam front and rear camera, package included the 64GB SD Card and rear camera, NOT included the 128GB SD card.

Make sure you know.



Front Cam



Suction Cup x2



**Car Wire
Trim Tool**

(helping
hiding cable)



USB Reader

(used to insert SD Card and
playback on PC)



Card Needle

(Poke the RES hole to reset the
dash cam when it not work)



128G SD Card

(already inserted into camera)



3MM adhesive sticker



USB Cable

(used to connect dash cam and playback on PC)



Cigarette Lighter Charger with USB Port



User Manual



Lens Cleaning Cloth



2 set of rearcam install too



8-10 CableHiding Clip



64GB SD Card

(already inserted into camera)



1080P Rear Camera

(If you need the extension cable for it,
please tell us!)



If you order the dash cam front and rear camera, your package will have these accessory. (Note: The SD card is 64GB, NOT 128GB)
If you order the dash cam front only, your package will not have these accessory.
Please read these carefully. Thanks!

WARRANTY

We are truly thankful to you to choose our upgraded A16W 2.5K Dash Cam.

We hope that you can not only using our item happily , but also can enjoy Excellent After-sale Service !

? MORE QUESTION

- 1 Not happy with shopping?
- 2 Defective item?
- 3 Missing parts or need accessory replacement?
- 4 Inaccurate website description?

Please contact with us before returning this item.

We can not 100% promise that everyone will satisfied with our item , but we give you 100% SATISFACTION GUARANTEE, Promise!

📞 How to contact with us

Way 1: Mail-box: ssontong_service@163.com

Way 2: Enter our listing - Search 3."ssontong dash cam" to click & enter our shop - Click "Ask a question" (top right corner)

Way 3: Contact with " Amazon Buyer Service" - Ask them to help found the seller's after-sales customer service (Due to the nature of the product, Amazon Buyer Customer Service cannot answer your product usage questions, so please contact our seller directly, hope you can understand.)



TABLE OF CONTENTS

Installation Map ————— 01

Important Notice Before Using ————— 01

Product Structure ————— 02

How to Use the Buttons ————— 05

Icon Instruction ————— 06

How to Connect with WiFi ————— 07

Installation Guidance (details) ————— 11

Menu Setting ————— 18

How to Playback the Video ————— 20

Questions & Answer ————— 22

Product Specification ————— 26

- Installation Map -

If your package contains only a 128G card and no rear camera, please ignore this part of the information. If you need a rear camera, please contact us.



- Important Notice Before Using -

- 1 Any using question or not satisfied, please feel freely contact with our seller: ssontong_service@163.com
- 2 Please do test both cam before installation. (use our cigarette lighter to charge it) When the front cam is on, please do not insert/unplug the rear cam otherwise it will easily cause a short circuit.
(the AV-IN Port)(If you buy the dash cam don't included the rear camera, please ignore it!)

3 Our dash cam comes with 128G SD card (already inserted in dash cam), if you want to change it, please use High Speed, Class 10 32-256G SD card. Please format the sd card before first time's using.

Please note: If you order the dash cam front and rear, the package included the 64GB SD card, it has insert into the camera. Not included the 128GB SD card.

If you just order the dash cam front only, package included the 128GB SD Card, not included the rear camera.

4 Please always keep charging the dash cam when using it, the internal battery is for emergency recording when parking. We also is the supplier of other dash cam's seller, all the 3 inch dash cam in the market like this.

5 If FREEZING or KEEP POWER ON & OFF issues, please use the card needle to insert the RES little hole (at the bottom of the dash cam).

6 When the dash cam connected to WiFi, can 't operate the dash cam, only can start/pause the recording on the mobile phone, or Playback/Delete the recorded files on the mobile phone.

- Product Structure -

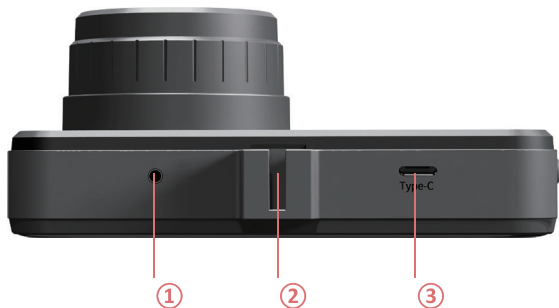




- ① OK Button
- ② Mode Button
- ③ Lock Button
- ④ Power Button

- ① Micro SD Card Slot
- ② Up Button
- ③ Menu Button
- ④ Down Button

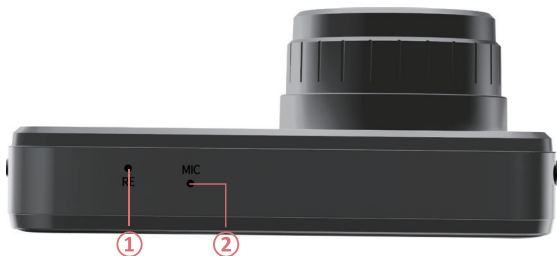




① Rear view Camera Port
(Optional)

② Mount Connector

③ Type-C Power Port



① RES(Reset)

② Mic

- How to Use the Buttons -

Power Button

Long Press to turn on/off the camera.
Shot Press to turn on/off the screen but still recording

Lock Button

When recording, shot press to lock/unlock the recording file

Mode Button

Short press to enter the Playback Mode, Recording File & the Photo File

OK Button

In playback, short press to enter and choose and playback the video /photo
In setting menu, short press to enter and confirm selection.
In recording, short press to manual pause/star the recording

Up Button

Short press: switch 3 display way of front and rear cam (front cam only, rear cam only , front+rear)
Long press: one key turn on/off the WiFi
when in Menu Setting / Playback Mode, you can press it and choose what you need.

Menu Button

In Standby/, press Menu button to enter the menu/ function setting
Another function of this button: Return to the previous step or exit the current operation

Down Button

Short press : one key to take a photo
Long press: one key to turn on /off the microphone
when in Menu Setting / Playback Mode, you can press it and choose what you need.

- Icon Instruction -

(when some function was turn off , the icon will not display on screen)



- ① Blue light : when flashing means dash cam is recording
- ② Red light: when it was on means dash cam is charging
- ③ Circle icon: when it was red and flashing means dash cam is recording the unlocked file, when it was yellow and flashing means it is recording the locked file.

- | | | |
|--------------------|-----------------------------|--------------|
| ④ Resolution | ⑤ Date | ⑥ Time |
| ⑦ WiFi | ⑧ SD card | ⑨ Microphone |
| ⑩ Battery Capacity | ⑪ WiFi Account and Password | |

- How to Connect with WiFi -

Here is the video of connection to WiFi :



Or enter this link to see how to connect with Wi-Fi:

<https://youtu.be/RAnhK4oUd10>

Please note: When connecting to WiFi successfully, the icon on the dash cam will turn green, and can't operate the dash cam any more unless disconnect with your phone.

1 Download the APP:

- Press "Menu Button" enter menu and found the "Wi-Fi"
- Press twice "OK Button" to enter and turn on the "Wi-Fi"
- Then you can see as below picture, scan code and download the APP



Wi-Fi Account &
Password

Or directly scan the below code to down the APP:



2 Use your phone to link the dash cam's WiFi:

- Open your "WLAN"
- Found the Wi-Fi Account like "CVR-5c6a1..." & connect it
- WiFi Password: 12345678
- When dash cam's WiFi icon display Green color



3 Open the APP "viidure"

Camera: Click "Into Camera" then you can enter another interface like step 4

Album: The video/photo which download on your phone

More: App Setting, like Language setting , date choice, app question feedback (not seller, if want to contact with us , please mail with ssontong_service@163.com)



4 How to Playback on your Phone.



Click it to turn on/off the microphone quickly

Click it to pause/star recording

Click it to take a photo

Camera file:4 folder

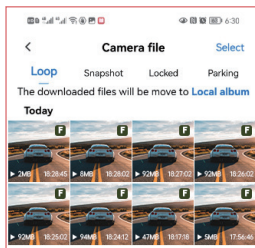
Loop

Snapshot

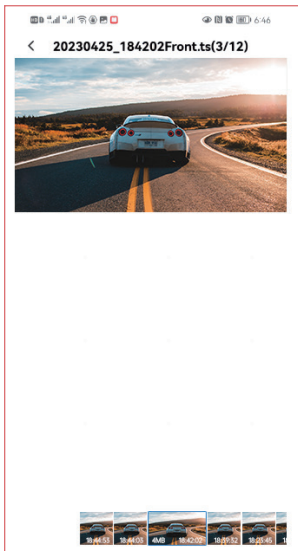
Locked

Parking

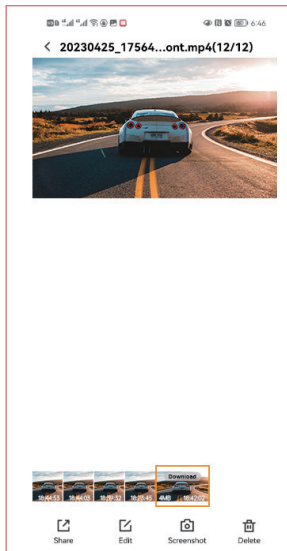
Click to select the file to playback



Camera Setting: You can do some dash cam setting here, like Microphone, Volume, Loop-Recording, Collision Sensing, Parking Monitor, Format SD Card, change WiFi Account & Password...



playback recording file



playback download file

Download: you can choose to download the recording file on your phone directly . After download the file, you can choose ONE-KEY Share it with Your Friends.

Screenshot: you can pause the recording and click screenshot , then easily save that moment in your phone.

Delete: choose and delete the recording file.

- Installation Guidance (details) -

Before installation , Please test and confirm both cam can be used well. (please use our cigarette lighter charger to charge) Any question please mail with us : ssontong_service@163.com

(If there is a problem with the dash cam before installation, you can contact with us to deal with it in time without wasting installation time. If there is a problem after installation, it can also be ruled out that it is not a machine problem but an installation problem.)

- Install Front Cam -



Connect the car charger to the camera and the cigarette lighter, hide the rest of the cable in the gap of the Interior trim board.
(If you want to use the rear cam , please plug the AV-IN port rear cable before turn on the dash cam.If your package contains only a 128G card and no rear camera, please ignore the information about the rear camera. If you need a rear camera, please contact us.)

The camera will auto-start recording once powered on.

◆ Insert the Memory Card

If you order the dash cam front and rear, the package included the 64GB SD card, it has insert into the camera. Not included the 28GB SD card. If you just order the dash cam front only, package included the 128GB SD Card, not included the rear camera.

Gently push the memory card in until you hear a click, and allow the spring release to push the card in/out.



Please insert the card in the right direction.

Please format the SD Card at first time using.

NOTE: Please format the SD card on camera directly



(please confirm the direction of SD Card firstly)

◆ Mount the Front Cam onto the Windshield

① Clean the front windshield



② Install the suction cup



③ Adjust the angle of item

Loosen the screw, adjust the main camera's angle and then tighten it to lock at the desired angle.

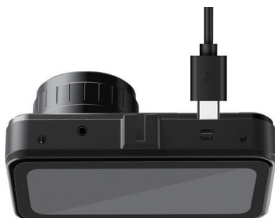


You can rotate the camera 360° to record to record the your preferred direction.

④ Install the suction cup on the windshield and lock it



⑤ Connect the power



- Install Rear Cam -

If your package contains only a 128G card and no rear camera, please ignore this part of the information. If you need a rear camera, please contact us.

There are two ways to place the camera. (If don't have rear camera, please ignore)

Way 1: Mount on the rear windshield. There is a 3M glue in the package for the rear camera. Please clean the rear windshield and find a suitable position, then paste the rear camera on the windshield.

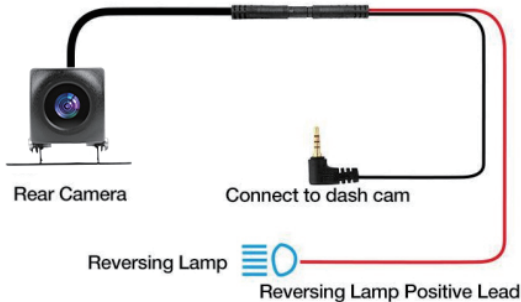
Way 2: (Recommended!) Install it near the license plate.

There are fixing screws inside the package to help you fix it

Note: when you install the rear camera, you can find a slim red cable, please connect it to the reversing lamp positive lead! With that red wire connected, when you reverse, it will display the reverse assist wire on the camera screen.

If your car has a reversing system, you do not need to connect that red wire.

◆ Connecting Method

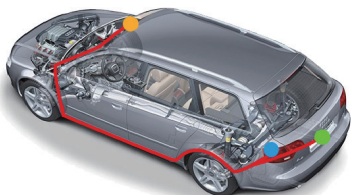
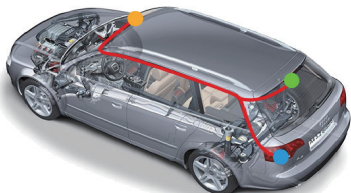


1. Please connect the cables as shown above:

- Connect the socket to the dash camera's rear camera interface.
- Connect the red cable to the positive lead of reversing lamp.
(back up light)

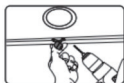
If the rear camera cannot be displayed in the dash cam:

- (1). Please try to switch the recording screen (single front lens, single rear lens or dual lens display) in standby mode by short pressing the up and down keys. If it still cannot be displayed, please try 2.
- (2). Reconnect the rear cam cable, especially the connection of the two sections of the rear cam cable part. If it still cannot be displayed, please try 3.
- (3). Contact the amazon seller's email, our engineer will help you better: ssontong_service@163.com



◆ Detail on Rear Cam Installation

① Select a flat and central place that near the number plate lamp at the rear of the vehicle.



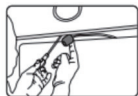
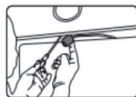
② Attach tape to the bracket of the camera to hold the camera in position while installing, and drill two small holes , one for the first screw, the second to run the reverse camera.

③ Use a screwdriver to fix the first screw leaving the screw loose enough to adjust the camera.



④ Insert the camera wire through the intended drilled hole, checking the installation position.

⑤ Mark the place that suitable for the second screw and drill a small hole for it.



⑥ Fix the second screw and securely tighten both screws.



Need using these accessories during installing the rear cam

⑦ After the installation is completed, connect the rear plug to the rear camera interface of the recorder.

Then start the car engine to turn on the dash cam front and rear.
(if turn on front cam firstly then connect rear cam to dash cam , maybe will lead to short circuit black screen - reboot dash cam maybe can fix this problem)

◆ Please Note:

1.Connection of the Rear Cam:

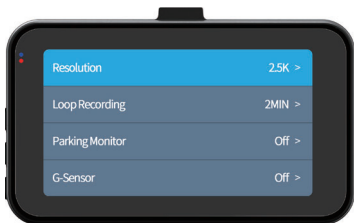
If not connect the red cable to the positive lead of reversing lamp: Will not appear the Reversing Mode when you reversing, but will keep recording. If connect, the cam will appear the reversing mode when you reversing, will not recording during that time. But the rear cam will keep recording normal when you driving.

2.Connect to your Computer to playback the recording file:

the FREE USB Reader: insert the SD Card in the USB and connect it to the Computer.

the FREE USB Cable: directly connect the dash cam with you computer to playback the driving recording.

- Menu Setting -



Press once “Menu Button” to enter this interface

Press UP/Down Button to switch other more options

Press OK to enter/confirm the options

(Another function of “Menu Button “ - - return to the previous step)

⚠ When turn on the Parking Monitor/ G-sensor /Motion Detect, the video easy be locked, locked file can not be loop recording , need manual delete it or format it, **so better turn off them when driving.**

⚠ Parking Monitor/ Motion Detect function **requires the use of hardwire kit.**