



Auckly

Better Choice Better Life

How to charge properly?

So lassen Sie richtig auf?
Comment Recharger Correctement?



Fast charging
charge rapide

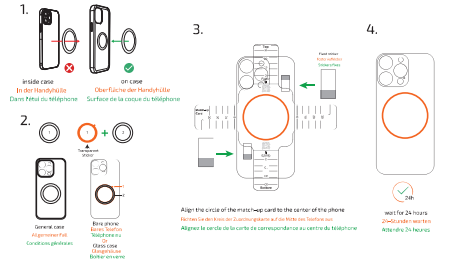
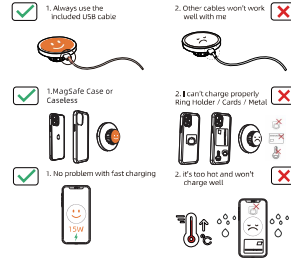


Unable to charge or slow to charge
Laden kann nicht oder langsam geladen werden
Impossible de charger ou lent à charger



SCAN TO GET Lifetime Replacement Unlimitedes Ersatz und Rückentstaltung

Mystery prize
Mysterypreis



EN Indicator Light Guide

Charger Status	Prepared to Charge	Ready to Charge	Charging	Full Charge
Indicator Light	Blinking	On	On	Flashing

- For error to eliminate:**
- Check the phone's charging status and ensure it is not in a low power state.
 - Check the phone's charging status and ensure it is not in a low power state.
 - Check the phone's charging status and ensure it is not in a low power state.
 - Check the phone's charging status and ensure it is not in a low power state.

DE Übersicht Statusleuchte

Status (Licht)	Bereit zum Laden	Geht in den Ladezustand	Ladezustand	Voll geladen
Indikatorleuchte	Flackert	An	An	Flackert

- Für Fehler beseitigen:**
- Überprüfen Sie den Ladezustand des Telefons und stellen Sie sicher, dass es nicht im Energiesparmodus ist.
 - Überprüfen Sie den Ladezustand des Telefons und stellen Sie sicher, dass es nicht im Energiesparmodus ist.
 - Überprüfen Sie den Ladezustand des Telefons und stellen Sie sicher, dass es nicht im Energiesparmodus ist.
 - Überprüfen Sie den Ladezustand des Telefons und stellen Sie sicher, dass es nicht im Energiesparmodus ist.

FR Guide sur l'Indicateur LED

État du Chargeur	Bon état	Prêt à charger	Chargement en cours	Erreur détectée
Indicateur LED	Respiration	ON	ON	Clignote

- Si un message d'erreur apparaît:**
- Vérifiez que le téléphone est correctement branché et que le câble de chargement est en bon état.
 - Vérifiez que le téléphone est correctement branché et que le câble de chargement est en bon état.
 - Vérifiez que le téléphone est correctement branché et que le câble de chargement est en bon état.
 - Vérifiez que le téléphone est correctement branché et que le câble de chargement est en bon état.

IT Indicatore Guida della luce

Stato di Ricarica	Bon état	Prêt à charger	Chargement en cours	Erreur détectée
Indicateur LED	Respiration	ON	ON	Clignote

- Se un messaggio di errore appare:**
- Verificare che il telefono sia correttamente collegato e che il cavo di ricarica sia in buone condizioni.
 - Verificare che il telefono sia correttamente collegato e che il cavo di ricarica sia in buone condizioni.
 - Verificare che il telefono sia correttamente collegato e che il cavo di ricarica sia in buone condizioni.
 - Verificare che il telefono sia correttamente collegato e che il cavo di ricarica sia in buone condizioni.

ES Guía del indicador luminoso

Estado de cargador	Bon état	Prêt à charger	Chargement en cours	Erreur détectée
Indicateur LED	Respiration	ON	ON	Clignote

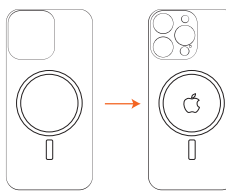
- Si un mensaje de error aparece:**
- Verificar que el teléfono esté correctamente conectado y que el cable de carga esté en buenas condiciones.
 - Verificar que el teléfono esté correctamente conectado y que el cable de carga esté en buenas condiciones.
 - Verificar que el teléfono esté correctamente conectado y que el cable de carga esté en buenas condiciones.
 - Verificar que el teléfono esté correctamente conectado y que el cable de carga esté en buenas condiciones.

Information: Information Technology Services GmbH
Auckly, 10000, China. Auckly is a registered trademark of Auckly.
Auckly is a registered trademark of Auckly.
Auckly is a registered trademark of Auckly.



Designed in Germany

Made in China



The best experience is the Magsafe phone case

Das beste Erlebnis ist die Magsafe-Telefonhülle

La meilleure expérience est la coque de téléphone Magsafe

FCC Warning

This device complies with part 15 of the FCC Rules. Operation is subject to the following two conditions:

(1) This device may not cause harmful interference, and (2) this device must accept any interference received, including interference that may cause undesired operation.

Any Changes or modifications not expressly approved by the party responsible for compliance could void the user's authority to operate the equipment.

Note: This equipment has been tested and found to comply with the limits for a Class B digital device, pursuant to part 15 of the FCC Rules. These limits are designed to provide reasonable protection against harmful interference in a residential installation. This equipment generates uses and can radiate radio frequency energy and, if not installed and used in accordance with the instructions , may cause harmful interference to radio communications. However, there is no guarantee that interference will not occur in a particular installation. If this equipment does cause harmful interference to radio or television reception, which can be determined by turning the equipment off and on, the user is encouraged to try to correct the interference by one or more of the following measures:

- Reorient or relocate the receiving antenna.
- Increase the separation between the equipment and receiver.
- Connect the equipment into an outlet on a circuit different from that to which the receiver is connected.
- Consult the dealer or an experienced radio/TV technician for help.

The FCC certification of this device refers to RF exposure testing performed in typical operating conditions, where a person is no closer than 20 centimeters from the device surface at all times, except for non-repetitive patterns with transient time intervals in the order of a second. Only in the stated conditions, the device is shown to fully comply with the FCC RF Exposure requirements of KDB 447498.