



# **AUTOMATIC SELF-CLEANING CAT LITTER BOX INSTRUCTION MANUAL**

BJ-LR68

# CONTENT

SAFETY INSTRUCTIONS .....	01
PRODUCT DESCRIPTION.....	02
APP CONNECTION.....	03
APP OPERATION.....	08
USAGE METHOD.....	09
CLEANING AND MAINTENANCE.....	14
INDICATOR LIGHT FUNCTIONS.....	17
ALARM FEEDBACK AND TROUBLESHOOTING.....	18
ACCESSORIES.....	19
PRODUCT SPECIFICATION.....	19

**Warning:**

Any changes or modifications to this unit not expressly approved by the party responsible for compliance could void the user's authority to operate the equipment.

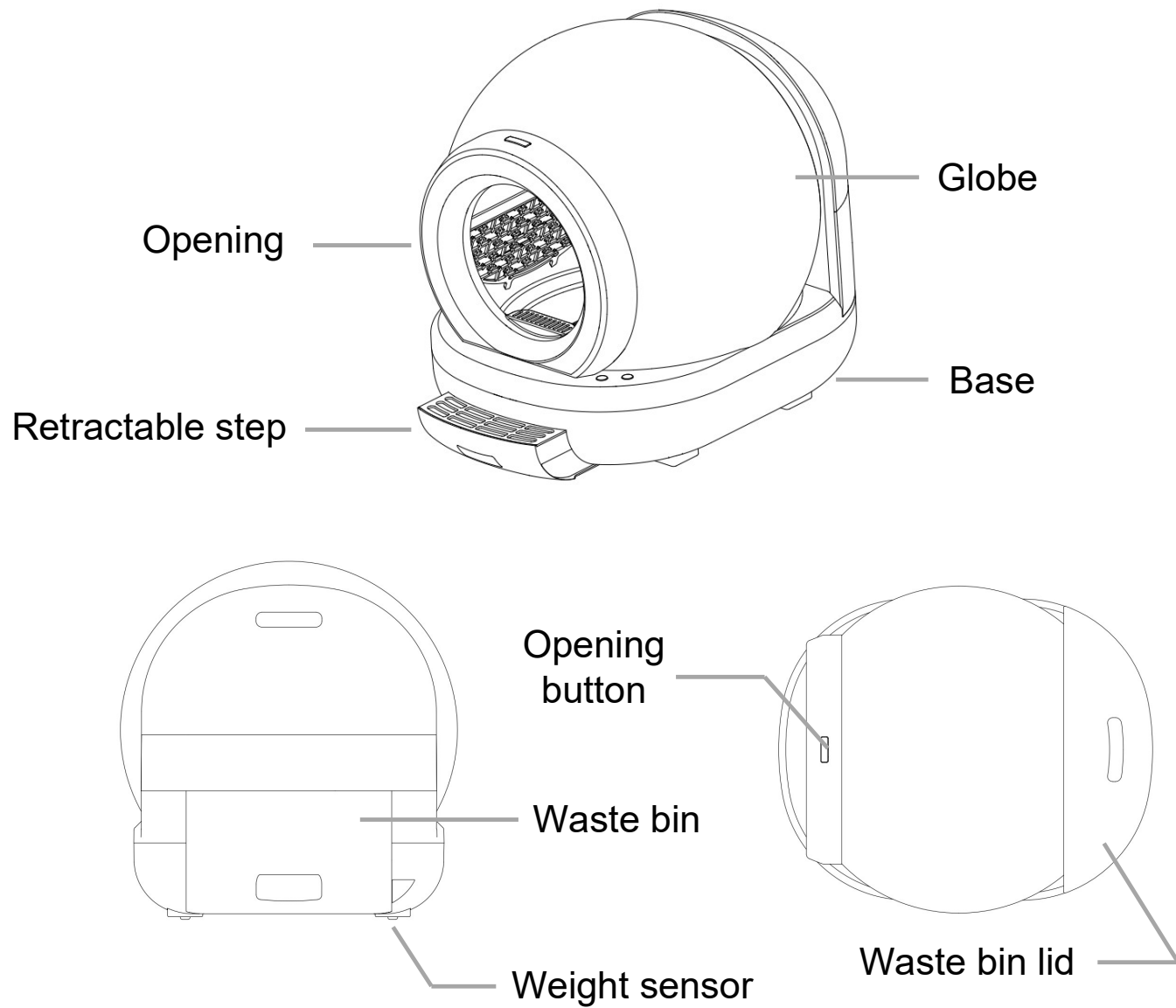
The user manual shall include the following or similar statement, placed in a prominent location in the text of the manual: Warning: Any changes or modifications to this unit not expressly approved by the party responsible for compliance could void the user's authority to operate the equipment.

- Class B device: NOTE: This equipment has been tested and found to comply with the limits for a Class B digital device, pursuant to part 15 of the FCC Rules. These limits are designed to provide reasonable protection against harmful interference in a residential installation. This equipment generates, uses and can radiate radio frequency energy and, if not installed and used in accordance with the instructions, may cause harmful interference to radio communications. However, there is no guarantee that interference will not occur in a particular installation. If this equipment does cause harmful interference to radio or television reception, which can be determined by turning the equipment off and on, the user is encouraged to try to correct the interference by one or more of the following measures:
  - —Reorient or relocate the receiving antenna.
  - —Increase the separation between the equipment and receiver.
  - —Connect the equipment into an outlet on a circuit different from that to which the receiver is connected.
  - —Consult the dealer or an experienced radio/TV technician for help.
- To satisfy FCC RF exposure requirements, a separation distance of 20 cm or more should be maintained between the antenna of this device and persons during device operation. To ensure compliance, operations at closer than this distance is not recommended.

# SAFETY INSTRUCTIONS

1. Please carefully read these instructions before using the appliance and keep the manual properly for future use.
2. The appliance is intended for household use.
3. Never use the appliance outside and always keep it in a dry environment.
4. Place the appliance on a table or flat surface. Do not place the appliance on a soft surface such as a carpet, as this may result in incorrect gravity sensor data.
5. The machine requires a cat weighing at least 1kg (3 months of age or older) for it to be able to detect and start the cleaning process.
6. Never use the appliance near hot surfaces.
7. The appliance must not be immersed in water or any other liquids.
8. Unplug the unit from the outlet when not in use and before cleaning.
9. Do not operate any appliance with a damaged cord or plug. If the appliance malfunctions or has been damaged, return it to the nearest authorized service facility for examination, repair, or adjustment.
10. Never use accessories that are not recommended by the manufacturer, as they could be dangerous to the user and may damage the appliance.
11. If the supply cord is damaged, it must be replaced by the manufacturer, its service agent, or similarly qualified persons to avoid any hazards.
12. This appliance is not intended for use by persons (including children) with physical, sensory, or mental disabilities, or lack of experience and knowledge, unless they have been supervised or instructed by a person responsible for their safety.
13. Children should be supervised to ensure that they do not play with the appliance.

# PRODUCT DESCRIPTION



# APP CONNECTION

This product can be controlled through the "Smart Life" or "Tuya" APP.

1. Regarding the installation of this app, please refer to the following two methods.

## Method 1:

Scan the QR code to download **Smart Life** app.



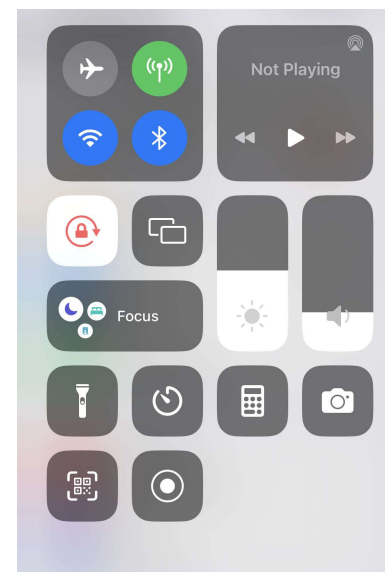
## Method 2:

Download the **Smart Life** app or **Tuya** app from the App Store.

Taking the following operation demonstration in the Tuya app as an example.

2. Keep the phone connected to 2.4GHz Wi-Fi and Bluetooth.

**Note:** The product only supports 2.4GHz networks.



3. Press the “CLEAN”





button for 3 seconds until the white light flashes

and you hear a beep sound.

**Note:**

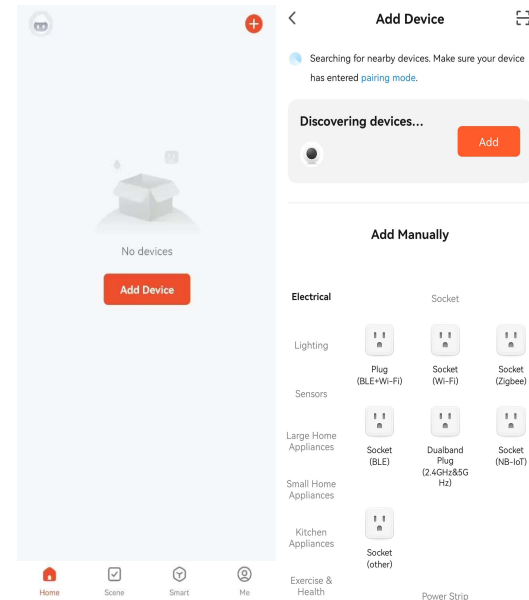
a. The networking mode will last for 5 minutes. If it fails to connect to the network within the time limit, it will automatically exit.

b. If the device is in child lock mode, please simultaneously press and hold the **CLEAN**  and **CLEAR**  buttons for 2 seconds, then proceed with further operation after removing the child lock.

4. There are two ways to add devices in the app.

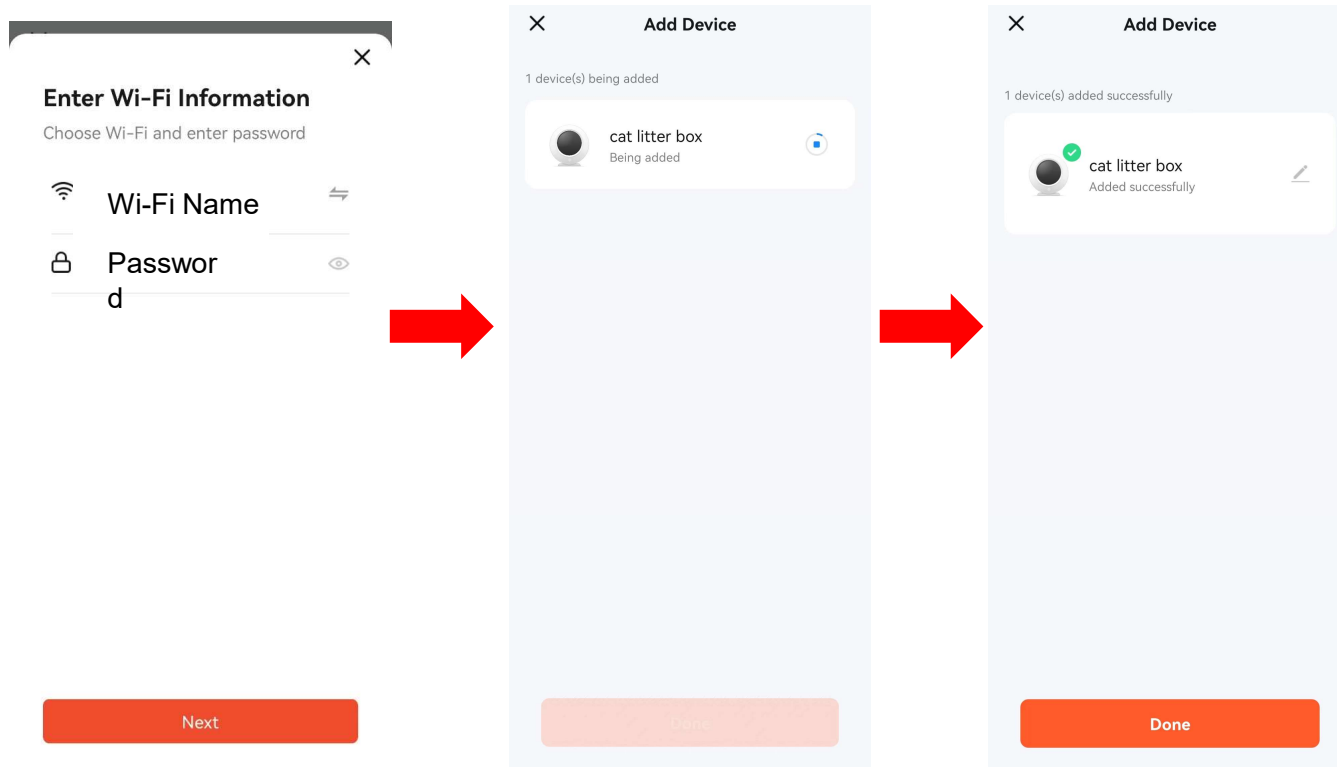
**Method 1: Auto Adding**

4.1.1 Open the APP and click on "Add Device". Wait for the automatic search. When the device is found, click "Add".



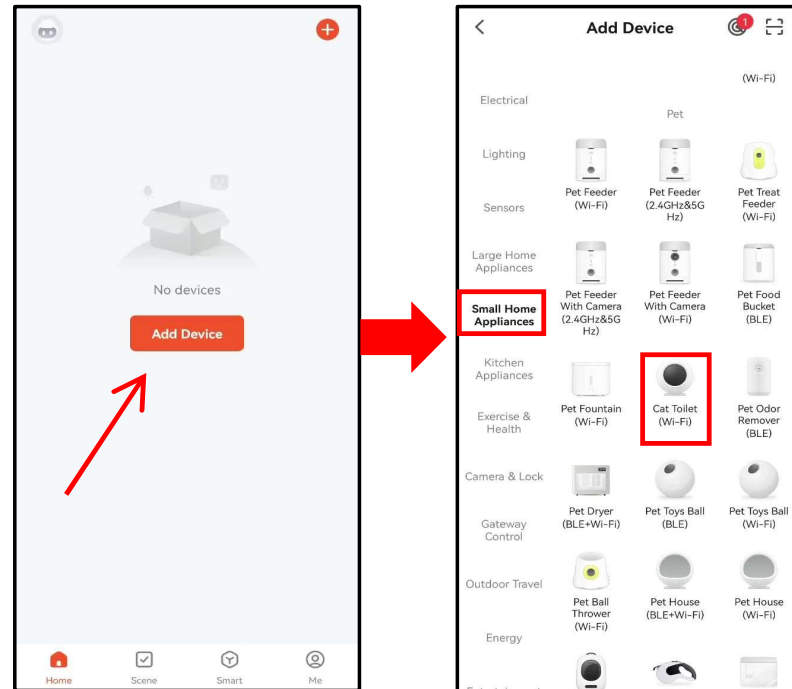


**4.1.2** Select the Wi-Fi network that appears. Enter the password to successfully connect.

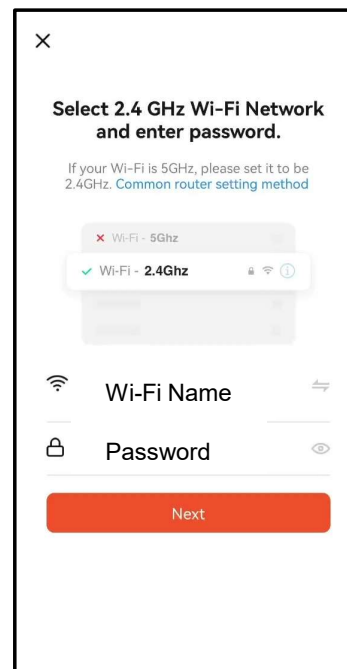


## Method 2: Manual Adding

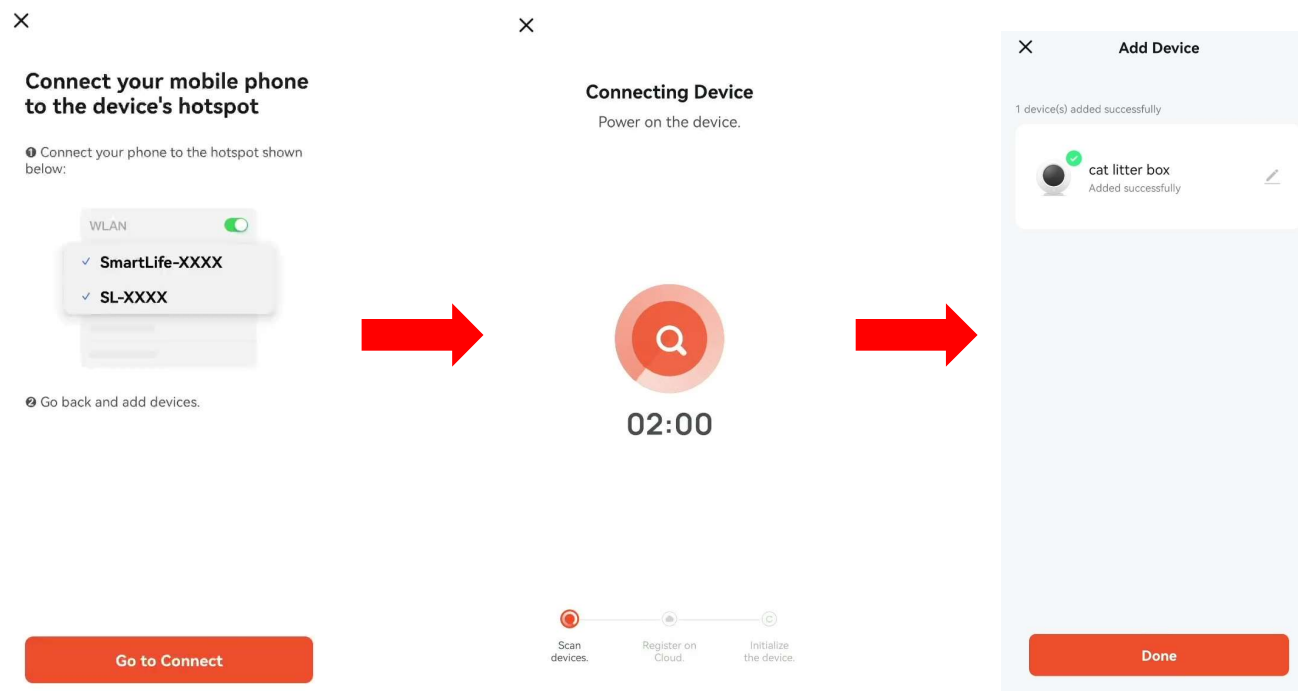
**4.2.1** Open the APP and click on "Add Device". Select the "Small Home Appliance" category, find and click on the "Cat Toilet" device.



**4.2.2** Select the Wi-Fi network and enter the password.



**4.2.3** After successfully connecting to WiFi, please connect to the device's hotspot, which is named "SmartLife-XXXX". After connecting to the hotspot, wait for a moment and the device will be connected successfully.

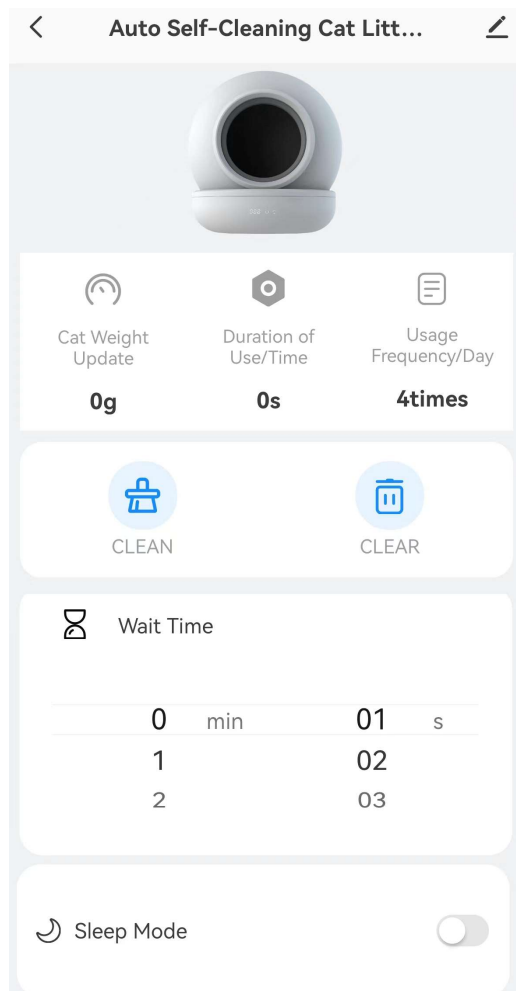


### Note:

1. If the router's account or password is changed, the device will not be able to connect to the network. In this case, please repeat the above steps to connect again.
2. Please note that the APP may have updates, so the actual operation may be slightly different from the description provided. Refer to the current APP guidance or contact official customer service for assistance.

# APP OPERATION

The meanings of the icon functions on the app are as follows.



Update your cat's weight.



After the cat uses the device, report the duration of usage.



After the cat uses the device, report the total number of times used during that day.



Manually start the cleaning mode.



Empty the litter from the globe.



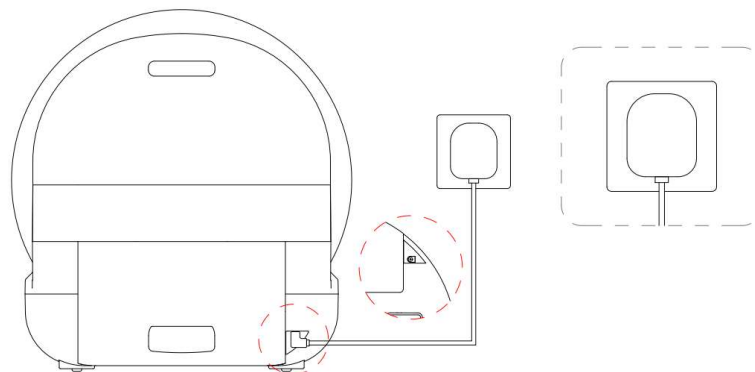
The Wait Time is the elapsed time starting from when the cat exits the globe until the unit starts a clean cycle. The default Wait Time is 8 minutes.



On/off switch for the sleep mode.

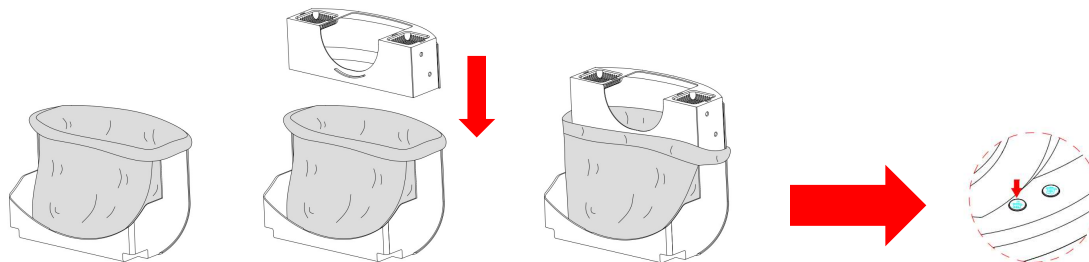
# USAGE METHOD

## I . Connect the power supply



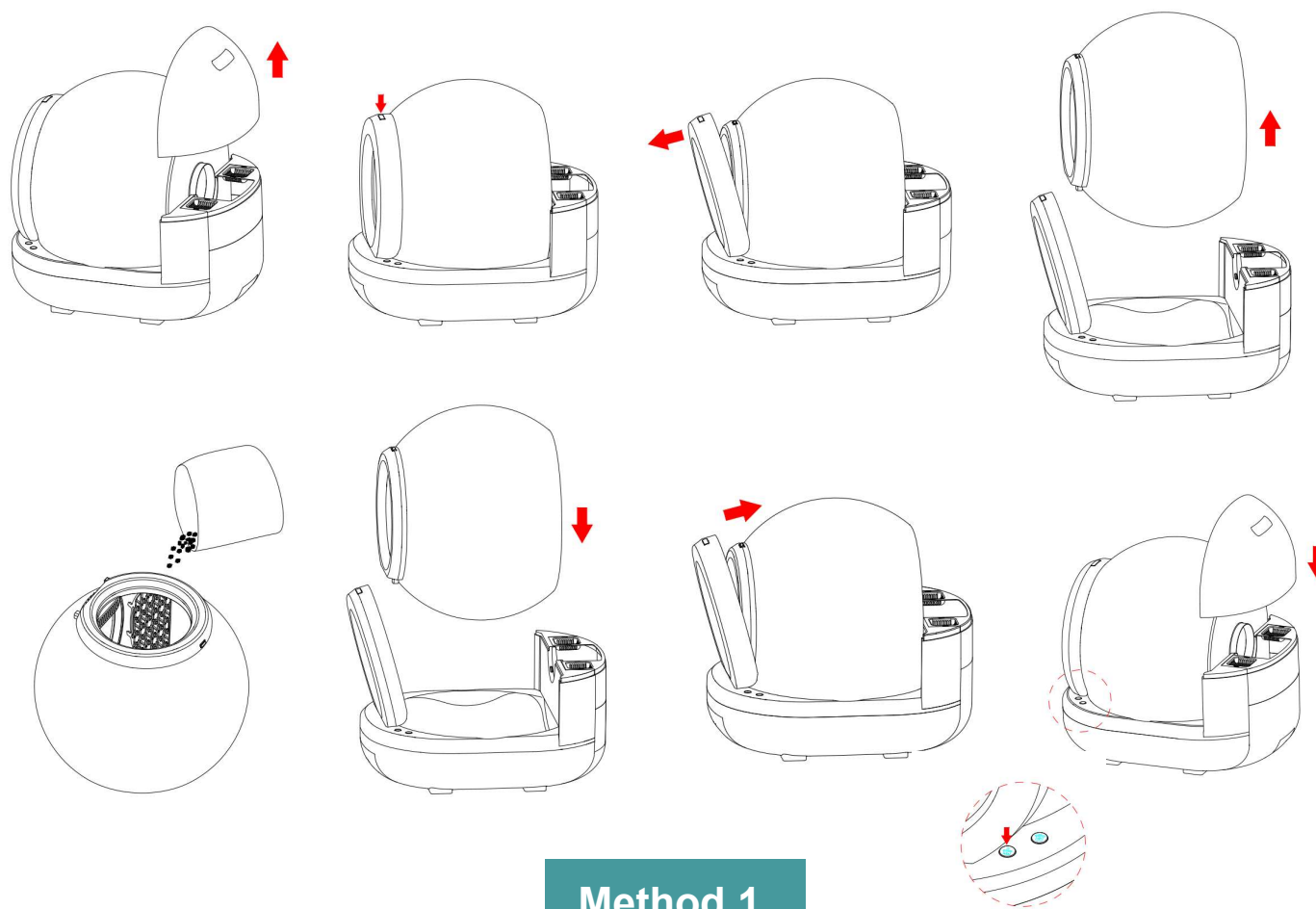
Please insert the adapter port into the rear hole of the product. Then Insert the plug into the socket.

## II. Place the trash bag



Please follow the above instruction to place/replace trash bags. Then press the “CLEAN” button once.

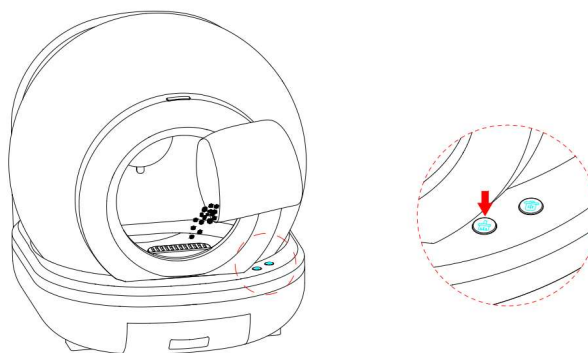
### III. Add cat litter



Remove the globe to add litter. (The product is suitable for all types of cat litter.)

Then press the “CLEAN” button to start the machine.


### III. Add cat litter



#### Method 2

Add the litter directly. Then press the “CLEAN” button to start the machine

#### Note:

After adding cat litter or changing the trash bag, press CLEAN  once to update the device's weight information, otherwise automatic cleaning will not be possible.

## IV. Button functions



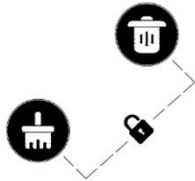
### CLEAN

1. Press the button once to start cleaning the cat litter.
2. During the cleaning process, press the button to pause the machine.
3. Press it again to resume operation.
4. Press the button twice to cancel the cleaning.
5. Press and hold the button for more than 3 seconds to reset the network and prepare for network connection.



### CLEAR

1. Press the button once to empty the cat litter.
2. During the litter clearing process, press the button to pause the machine.
3. Press it again to resume operation.
4. Press the button twice to cancel the clearing.



1. If there is no button operation on the machine within 5 minutes (only mechanical buttons on the machine, operations in the APP do not affect the child lock function), the child lock will be automatically activated.
2. Press the "CLEAN" button and "CLEAR" button simultaneously for 2 seconds. The buzzer will emit a long sound, and all indicators will flash once at the same time, indicating that the child lock is activated or removed.
3. In the child lock state, pressing any button is ineffective. The buzzer will emit three sounds, and all indicators will flash three times simultaneously. The child lock must be removed before using any button.



## V. Cleaning function instructions

### **Auto Cleaning**

After the cat finishes using the litter box and leaves, it will automatically start cleaning after a default 8-minute delay. The wait time can be set in the APP.

### **Manual Control Cleaning**

Press the "CLEAN" button on the machine to start cleaning immediately.  
Click the "CLEAN" button in the APP to start cleaning immediately.

### **Scheduled Cleaning**

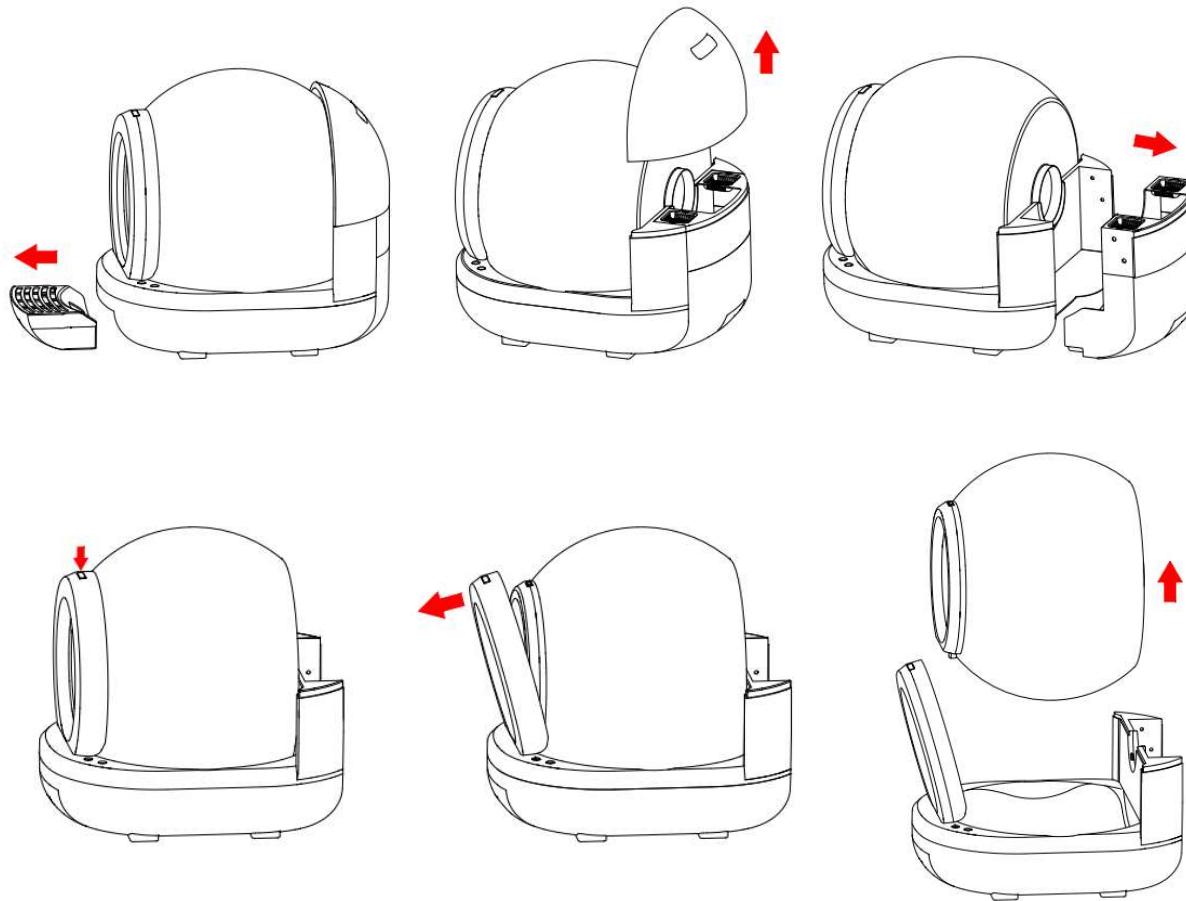
After the machine is powered on, it will automatically clean once every 12 hours. If "Sleep Mode" is enabled in the APP after connecting to the network, it will not clean automatically at night.

### **Sleep Mode**

After the machine is networked, you can open the "Sleep Mode" in the APP.  
After the Sleep Mode is enabled, automatic cleaning will not occur between 23:00~9:00.  
With Sleep Mode enabled, you can still perform "Manual Control Cleaning" and "CLEAR" functions.  
When Sleep Mode is activated, the buzzer will not make any sound.

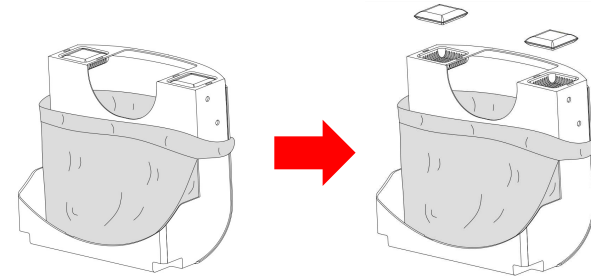
# CLEANING AND MAINTENANCE

1. When cleaning, be sure to disconnect the power supply.
2. Please remove the parts to be cleaned according to the following instructions.

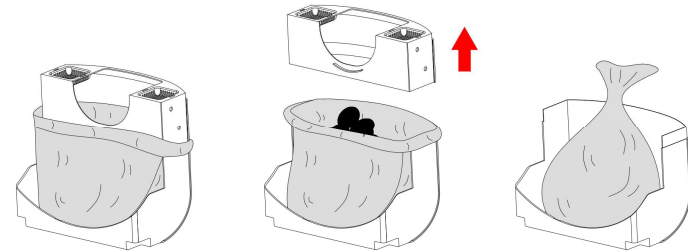


3. Take out the charcoal bag.

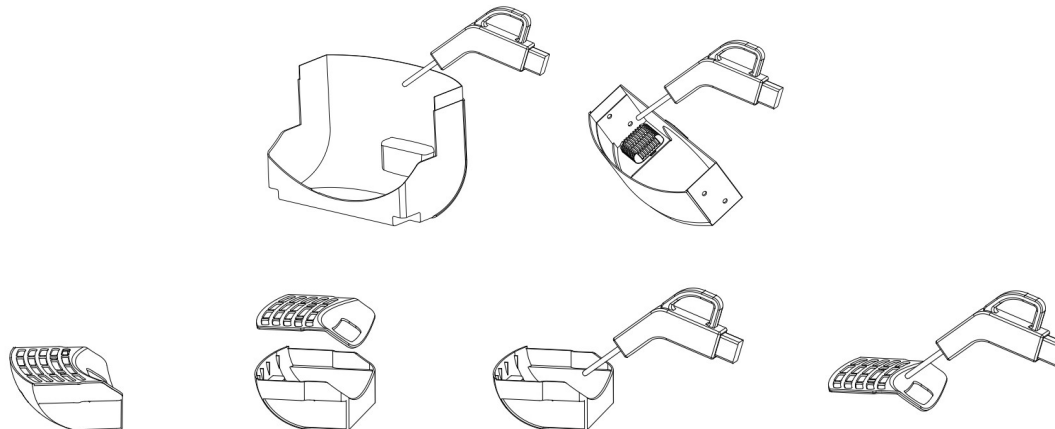
**Note:** The product comes with 2 charcoal bags, and an additional 2 charcoal bags are included as accessories. Suggested replacement period for the charcoal bag is once a month.



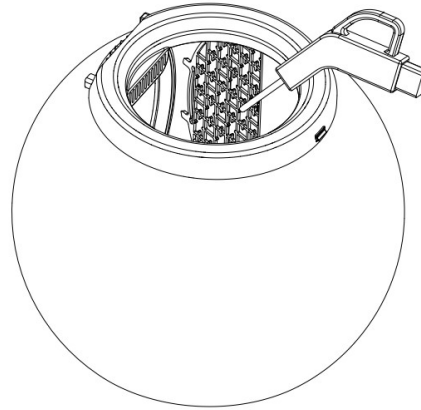
4. Remove the trash bag. Empty the dirt inside the waste bin and the retractable step.



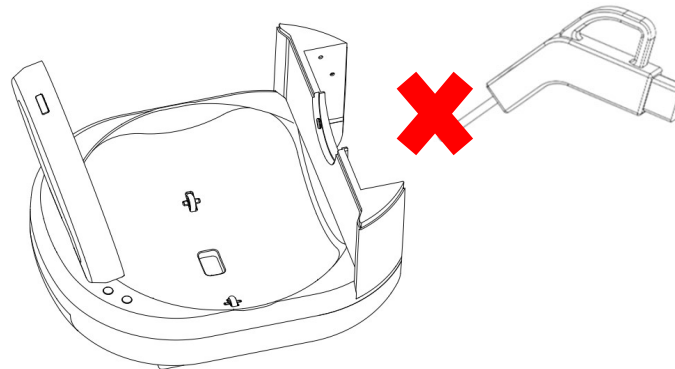
5. Clean the waste bin, lid and step with water and a mild cleaning agent.



6. After emptying the cat litter inside the globe, you can rinse the inside of the globe with water.



7. The base can only be cleaned with a slightly damp cloth.



8. After cleaning all the parts, please use a dry cloth to wipe off the moisture or let the parts dry in a ventilated place before reinstalling and starting the machine again.

# INDICATOR LIGHT FUNCTIONS

## WHITE LIGHT

- Fast Flashing: Entering pairing mode.
- Slow Flashing: Not connected to the network or network error.
- Solid On: Successful Wi-Fi connection.

## RED LIGHT

- Fast Flashing: Waste bin or waste bin lid not properly installed.
- Slow Flashing: The waste bin is nearly full or the infrared radar above the waste bin is blocked. Open the waste bin lid, empty the bin, and check the infrared radar.
- Solid On: The waste bin is full or the infrared radar above the bin is blocked. The machine has stopped working. Empty the waste bin or check the infrared radar.

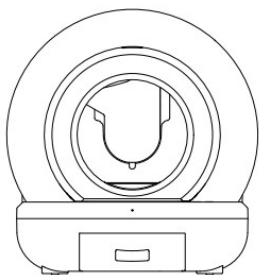
## BLUE LIGHT

- Solid On: “CLEAN” or “CLEAR” function in progress.
- Slow Flashing: 1. Animal or human detected in front of the machine.  
2. Pause state.

# ALARM FEEDBACK & TROUBLESHOOTING

PROBLEMS	CAUSES	SOLUTIONS
"Red Light" Fast Flashing.	Waste bin or its lid not properly installed.	Correctly install the waste bin or its lid.
"Red Light" Slow Flashing or Steady On.	Waste bin full.	Clean the waste bin and replace the trash bag.
	Foreign object in the waste outlet.	Check the waste outlet and remove the foreign object.
	Dirty sensor light.	Wipe the sensor light clean.
Mid-Operation Stop.	There are animals in front of the machine.	The operation can be resumed after the animals leave.

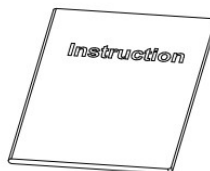
## ACCESSORIES



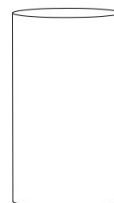
Auto Self-cleaning  
Cat Litter Box



Adapter



Instruction  
Manual



Trash Bags  
\*2



Charcoal Bag \*2

## PRODUCT SPECIFICATION

<b>Product Name</b>	Automatic Self-cleaning Cat Litter Box	<b>Model</b>	BJ-LR68
<b>Product Size</b>	571*500*530 mm (22.5*19.7*20.9 inches)	<b>Suggested Pets</b>	Cats
<b>N.W.</b>	8kg(17.6lbs)	<b>Rated Voltage</b>	DC12V
<b>Rated Power</b>	24W	<b>Rated Frequency</b>	60Hz

Take the smart approach to pet care.

