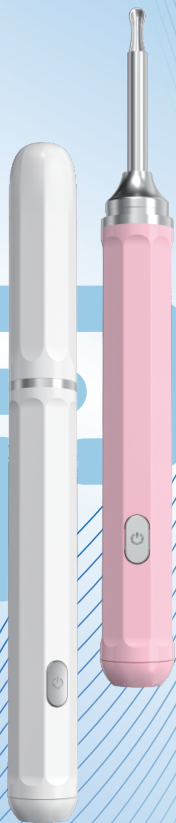


Visual Ear Picking User Manual



Please read this manual carefully before use and keep it properly for future reference.

APP Download Instructions



Please use your mobile browser to scan the QR code for downloading and installation.



Cooler

▶ iOS app store

Android Google

Android China

Apple users

Select the los appstore option after scanning the code. Open the App Store to download and install.

You can also directly search for Picidae downloads in the App Store.



Cooler

▶ iOS app store

▶ Android Google

Android China

Android users

After scanning the code, select the Android Google option to enter the next page. Click: Download and install through third-party browser options.

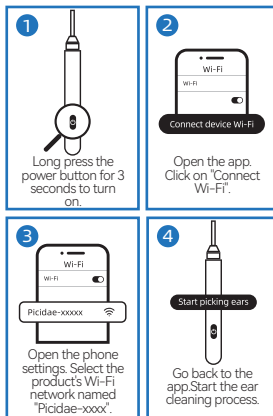
Charging Instructions:

1. Before initial use, please ensure that the product is fully charged.
2. It is not recommended to completely drain the battery.
3. When the indicator light flashes red, please charge it promptly.
4. When charging, connect the Type-C interface plug to this product.

Indicator Light Instructions:

1. After powering on, the blue light will flash.
2. When connected to Wi-Fi, the blue light will stay on.
3. When the battery is low, the red light will flash.
4. During charging, the red light will stay on.
5. When the battery is fully charged, the red light will turn off.

APP Connection:



If the system prompts: "The current WLAN cannot access the internet. Do you want to continue using this WLAN?", please do not switch Wi-Fi networks. Click on "Use" to proceed.

Translation:

Product Name: Visual Ear Picking
Product Model: P1
Network Standard: IEEE 802.11b/g/n
Antenna: Built-in Wire antenna
Antenna Operating Frequency: 2.4Ghz
Image Transmission Speed: 25fps
Connection Method: Wi-Fi Hotspot Connection
Battery: 120mAh
Input Current: DC5V 0.5A
Image Sensor: CMOS
Pixels: 5 million
Gravity Sensor: 3-axis

Troubleshooting:

Screen freezing:

* Make sure the product is used in close proximity to the phone within the Wi-Fi signal transmission range.

* Low battery can weaken the Wi-Fi signal, so please charge it in a timely manner.

* If there are many Wi-Fi signals in the environment, they may interfere with the signal of the product. Please use it in an area with fewer Wi-Fi signals.

No image display:

* Confirm that the app has been granted permission to use network data.

* Check if the phone is connected to the product's Wi-Fi network. If connected but still no display, try closing and reopening the app.

Unable to store images or videos:

* Confirm that the app has been granted permission to take photos and record videos.

Unable to charge:

* Please use the provided charging cable to charge.

* Try using a different charger if the problem persists.

After-sales Warranty Card

1. Please turn off the product before charging. Do not use a fast charger for charging.

2. If the image is unclear, please use a cotton swab to wipe the lens.

3. Before use, observe the surrounding environment to prevent accidents.

4. It is normal for the lens and body to generate heat.

5. This product is for personal care use only and should not be used as a medical device.

6. Please keep the product in a cool, dry place, away from fire and corrosive substances.

7. This product is not suitable for children.

8. Do not immerse the product in water or rinse it under a faucet.

9. Do not allow children to play with this product.

10. Do not take the product to an unauthorized service center for repairs.

11. Do not use any accessories or parts produced by other manufacturers; using such accessories or parts will void your warranty.

FCC Compliance Statement: This device complies with Part 15 of the FCC Rules. Operation is subject to the following two conditions: (1) this device may not cause harmful interference, and (2) this device must accept any interference received, including interference that may cause undesired operation. Changes or modifications not expressly approved by the party responsible for compliance could void the user's authority to operate the equipment.

NOTE: This equipment has been tested and found to comply with the limits for a Class B digital device, pursuant to Part 15 of the FCC Rules. These limits are designed to provide reasonable protection against harmful interference in a residential installation. This equipment generates, uses instructions, may cause harmful interference to radio communications. However, there is no guarantee that interference will not occur in a particular installation. If this equipment does cause harmful interference to radio or television reception, which can be determined by turning the equipment off and on, the user is encouraged to try to correct the interference by one or more of the following measures:

-- Reorient or relocate the receiving antenna.

-- Increase the separation between the equipment and receiver.

-- Connect the equipment into an outlet on a circuit different from that to which the receiver is connected.

-- Consult the dealer or an experienced radio/TV technician for help.

Warning: Changes or modifications to this unit not expressly approved by the party responsible for compliance could void the user's authority to operate the equipment.

FCC Radiation Exposure Statement

The device has been evaluated to meet general RF exposure requirement.

The device can be used in portable exposure condition without restriction.

After-sales Warranty Card

Product Warranty Policy:

1. Under normal use, the warranty period for this product is one year.

2. The following situations are not covered by the warranty (including but not limited to): a. No warranty card or any proof of purchase. b. Exceeding the scope of precautions, abnormal use. c. Self-repair or damage caused by human factors (including improper operation), as well as damage caused by natural disasters. d. Exceeding the "Three Guarantees" period, or using the product for purposes beyond its intended use.

3. When returning the product for repair, please include the warranty card.

4. The company reserves the right to modify the warranty terms and the final interpretation of the terms.

After-sales Warranty Card

Customer Name _____

Customer Phone _____

Customer Address _____

Product Name _____

Product Specifications/Model _____

Remarks _____
