



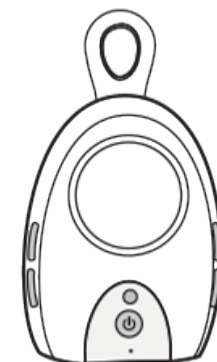
TIMEFLYS®

## ClicknTalk™ Audio Door Phone with Baby Monitor Combo Set



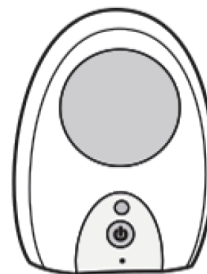
ClicknTalk

**Hong Kong**  
MCD Limited  
Unit 631, My Loft,  
No.9 Hoi Wing Road,  
Tuen Mun, NT, Hong Kong  
Tel: +852 3488 6618



Focus panda PU  
**FC**

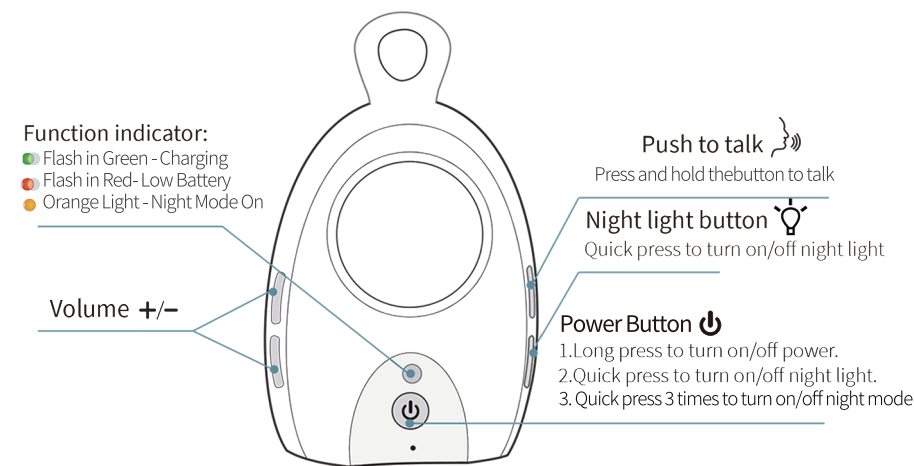
**China**  
MC Devices Co., Ltd  
The 23rd floor, Overseas Chinese  
Mansion II, Kejianhuan Rd  
Nanshan, Shenzhen, China  
Tel: +86 755 8618 5099



Focus panda BU

**USA**  
MC DEVICES (USA) LTD.  
1625 Buffalo Avenue, Suit 2B#6,  
Niagara Falls, New York  
14303, United States  
Tel: +1 855 TIMEFLY(8463359)

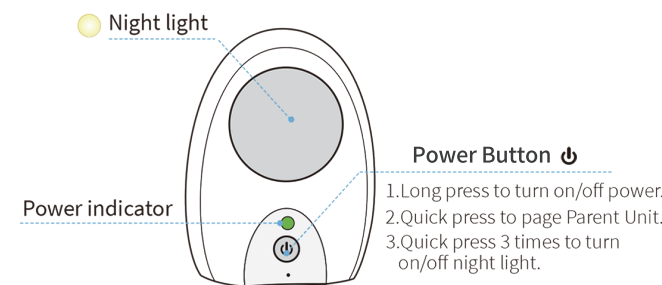
## Inside the box – Parent Unit/ Indoor Unit



### Tips & tricks:

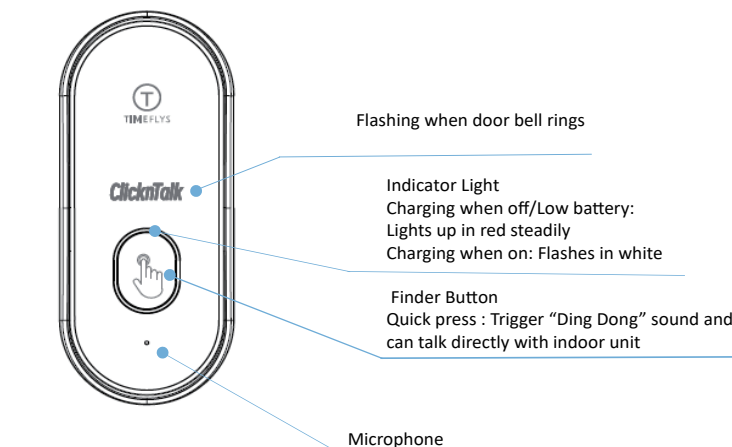
1. Long press and quick press volume +/- to adjust the volume of baby unit

## Inside the box- Baby Unit/Indoor Unit



## INSIDE THE BOX – OUTDOOR UNIT

### Door Phone with Mounting Bracket x1



### Tips:

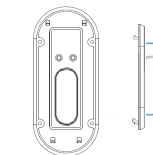
- When indoor unit is switched off, door phone does not work

## 2 WAYS OF MOUNTING DOOR PHONE

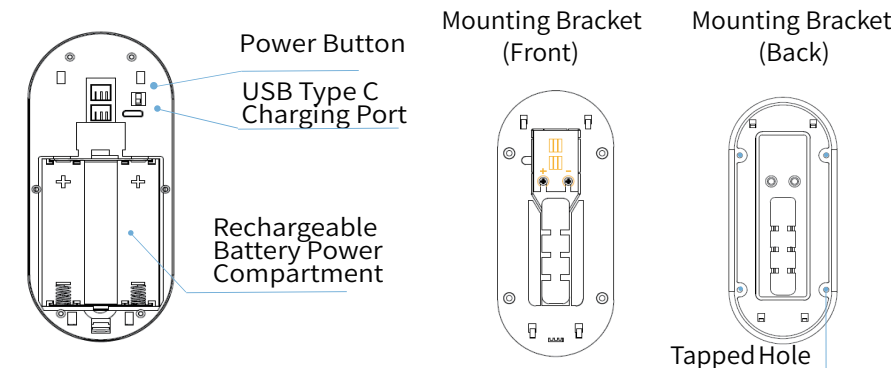
Way 1 : Install mounting bracket with screws.



Way 2 : Install mounting bracket with adhesive tape



## DOOR PHONE BACK VIEW



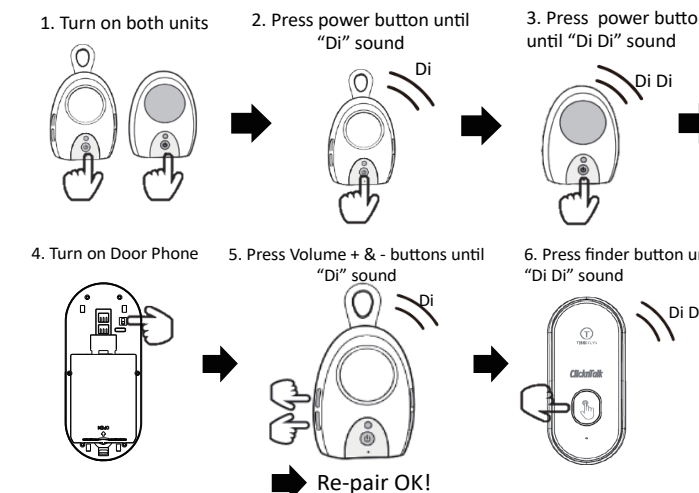
### Tips:

Doorphone may not withstand with extreme weather, recommended to use at apartment, offices or indoor only.

When switching off the power button at the back of door phone, indoor unit does not work.

All units are **PAIRED BY DEFAULT.**

In case need to re-pair follow steps below



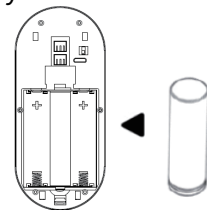
## HOW CLICKNTALK™ AUDIO DOOR PHONE WORK?

1. A visitor presses door bell , sounds “Ding Dong”
2. Visitor talks to housemaster via door phone
3. Housemaster talks with visitor by pushing 2-way talk button on indoor unit

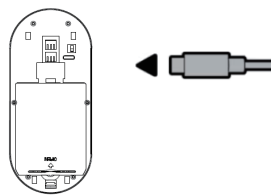
Tips: If there is no action/sound detected for 10 seconds, sleeping mode of door phone would be on.

## WIRE-FREE DIY SETUP IN A MINUTE

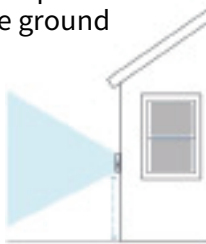
### Step 1: Install with rechargeable battery



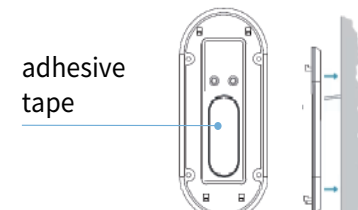
### Step 2: Fully charge the battery until indicator light off



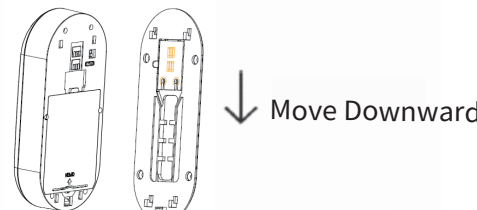
### Step 3: Suggest to mount door phone 4 feet above the ground



### Step 4: Stick the mounting bracket with adhesive tape to the wall



### Step 5: Attach your door phone to the mounting bracket.

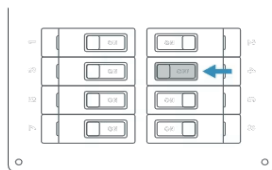


## HOW TO INSTALL WIRED DOOR PHONE

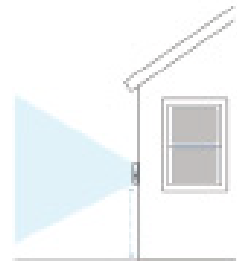
Installation must be carried out by a qualified electrician. Refer to your local laws and building codes before performing electrical work; permits plus professional nstallation may be required by law.

For your safety, only use an existing doorbell transformer **within 5-30V**.  
Using incompatible power sources can damage your device and cause electric shock.

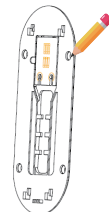
### Step 1 : Turn off power at consumer unit



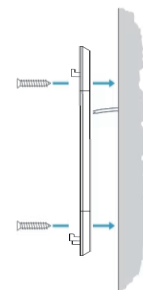
### Step 2: Suggest to mount door phone 4 feet above the ground



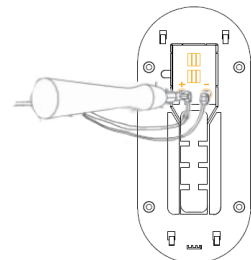
### Step 3. Mark the screwholes.



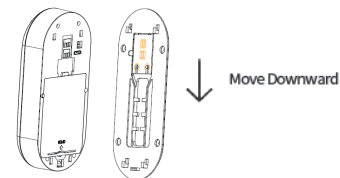
### Step 4: Install the mounting bracket.



### Step 5 : Connect the wires to +ve & -v & -ve power terminal



### Step 6: Attach door phone to the mounting bracket.



TIMEFLYS®

### Safety Instructions

please read and follow the instructions below prior to using this product.

- 1.This product is not a toy do not allow children to play with it.
- 2.Strangulation Hazard: please keep the cords away from children for at least 3 feet/ 1 meter, in order to avoid strangling and choking
- 3.Do not place the baby monitor inside or near the crib or playpen.  
Always place this product out of children's reach (at least 3 feet/1 meter away).
- 4.Avoid exposure to direct sunlight and any nearby heaters.
- 5.Do not use or place the product near water, for example, next to the bathtub, sink, laundry machine, shower, swimming pool, or any other liquid-based containers.
- 6.Use the adaptor provided in the package or the standard adaptor with correct polarity and voltage (Input: 100-240V 50/60 H20.2A; Output: 5V ...1000mA).
- 7.Only use the charging cables included in the package, do not use other unofficial third-party cable to charge the unit. This might result in overheating and/or electronic component damage.
- 8.Only use the included rechargeable battery for the baby monitor, do not replace it with other batteries. Do not disassemble, squeeze, heat or throw it into the fire.
9. Do not overload the wall outlet or use an extension cord.
10. Do not place this product on any unstable surfaces or objects.
11. Always unplug the baby monitor from the wall outlet and power source when used.
12. Do not insert any sharp or metal objects into the plug contacts. This might cause electric shock.
13. Unplug the product from the power supply before cleaning. Do not use any liquid aerosol cleaners. Use a dry cloth to clean only.
- 14 Avoid spilling any liquid into this product.
15. This product is specifically designed for baby care and is not a replacement for adult supervision.
16. This product is not designed as a medical device.
- 17 Always test the baby monitor and check the reception status after changing its setup location. The signal of product may be affected by the wall thickness and other devices in the room using 2.4Ghz frequency (e.g. router, WIFI, laptop, etc.)
18. If the baby monitor is not properly functioning, please contact the customer service team as soon as possible in order to resolve the issues.

## FCC Statement

This device complies with Part 15 of the FCC Rules. Operation is subject to the following two conditions:

- (1)This device may not cause harmful interference.
  - (2)This device must accept any interference received, including interference that may cause undesired operation.
2. Changes or modifications not expressly approved by the party responsible for compliance could void the user's authority to operate the equipment.
- Note: This equipment has been tested and found to comply with the limits for a class B digital device, pursuant to Part 15 of the FCC Rules. These limits are designed to provide reasonable protection against harmful interference in a residential installation.
- This equipment generates uses and can radiate radio frequency energy and, if not installed and used in accordance with the instructions, may cause harmful interference to radio communications. However, there is no guarantee that interference will not occur in a particular installation. If this equipment does cause harmful interference to radio or television reception, which can be determined by turning the equipment off and on, the user is encouraged to try to correct the interference by one or more of the following measures:
- Reorient or relocate the receiving antenna.
  - Increase the separation between the equipment and receiver.
  - Connect the equipment into an outlet on a circuit different from that to which the receiver is connected.
  - Consult the dealer or an experienced radio/TV technician for help.

## ISED Statement

This device contains licence-exempt transmitter(s)/receiver(s) that comply with Innovation, Science and Economic Development Canada's licence-exempt RSS(s). Operation is subject to the following two conditions: This device may not cause interference. This device must accept any interference, including interference that may cause undesired operation of the device.

Le présent appareil est conforme aux CNR d'Industrie Canada applicables aux appareils radio exempts de licence. L'exploitation est autorisée aux deux conditions suivantes : (1)l'appareil ne doit pas produire de brouillage, et (2) l'utilisateur de l'appareil doit accepter tout brouillage radioélectrique subi, même si le brouillage est susceptible d'en compromettre le fonctionnement.