

INSTRUCTION MANUAL

FCC Warning

This device complies with Part 15 of the FCC Rules.

Operation is subject to the following two conditions:

(1) This device may not cause harmful interference, and
(2) this device must accept any interference received, including interference that may cause undesired operation.

NOTE 1: This equipment has been tested and found to comply with the limits for a Class B digital device, pursuant to part 15 of the FCC Rules.

These limits are designed to provide reasonable protection against harmful interference in a residential installation.

This equipment generates, uses and can radiate radio frequency energy and, if not installed and used in accordance with the instructions,

may cause harmful interference to radio communications. However, there is no guarantee that interference will not occur in a particular installation. If this equipment does cause harmful interference to radio or television reception, which can be determined by turning the equipment off and on,

the user is encouraged to try to correct the interference by one or more of the following measures:

- Reorient or relocate the receiving antenna.
- Increase the separation between the equipment and receiver.
- Connect the equipment into an outlet on a circuit different from that to which the receiver is connected.
- Consult the dealer or an experienced radio/TV technician for help.

NOTE 2: Any changes or modifications to this unit not expressly approved by the party responsible for compliance could void the user's authority to operate the equipment. The device has been evaluated to meet general RF exposure requirement.

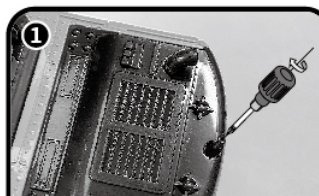
The device can be used in portable exposure condition without restriction.

8 Channel - Crane Introduction



| | |
|------------------|------------------------------------------------------------------------------|
| Product Name | Engineering Series - Alloy Version Remote Control Crane |
| Main Material | Abs Material Electronic Components |
| Metal Position | Alloy Hook |
| Product Function | Light/Music, Forward/Backward, Turn Left/Right Up/Down, Automatic Demo, etc. |
| Frequency | 2.4GHz |
| Charging Time | About 1 Hour |
| Body Battery | 800mAh 3.7V Rechargeable Battery Pack |

Usage Method



Unfasten the battery compartment screws



Open the battery cover of the crane, Install the configured rechargeable battery.



Battery compartment tail cover
Use 3.7V 800mAh rechargeable battery



Open the switch under the crane to "ON".



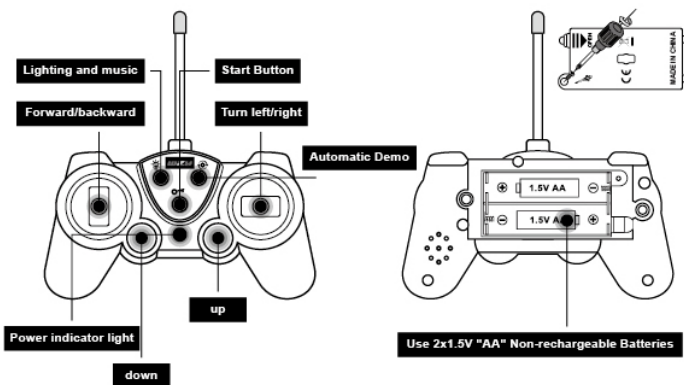
Remote control uses 2x1.5V "AA" Non-rechargeable battery, and lock the battery cover.



Press the start button on the remote control, and when the signal is connected with the body, it can be operated

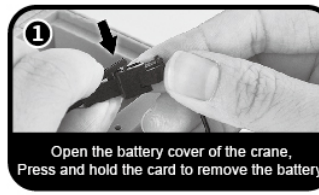
Remote Control Introduction

8-CHANNEL FUNCTION: that is, 8 independent keys, each key corresponds to a function, with independent programming demonstration function.

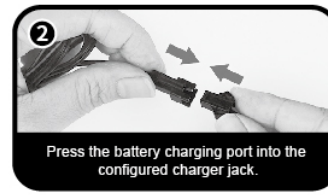


Use 2x1.5V "AA" Non-rechargeable Batteries

Charging Method



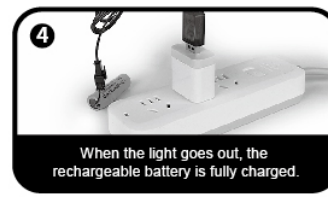
Open the battery cover of the crane, Press and hold the card to remove the battery.



Press the battery charging port into the configured charger jack.

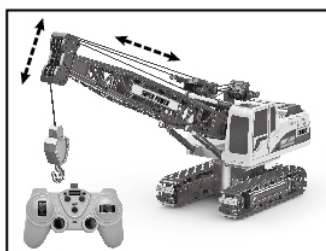


When connected to the socket, the light indicates that the battery is charging.



When the light goes out, the rechargeable battery is fully charged.

Detail Introduction



Free Extension Flexible Hook

The cab can be rotated 360°
The lifting arm and hook can be extended and lifted up and down.
Can remotely lift wood, light items, etc.

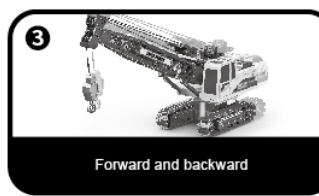
Function Display



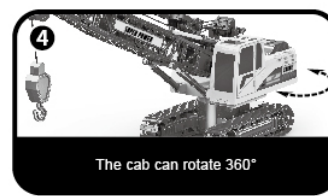
Press the lights on the remote, music build, headlights the lights will be on and the music will follow



AUDIO



Forward and backward



The cab can rotate 360°