

多功能面板灯

MULTI-FUNCTION PANEL LIGHT

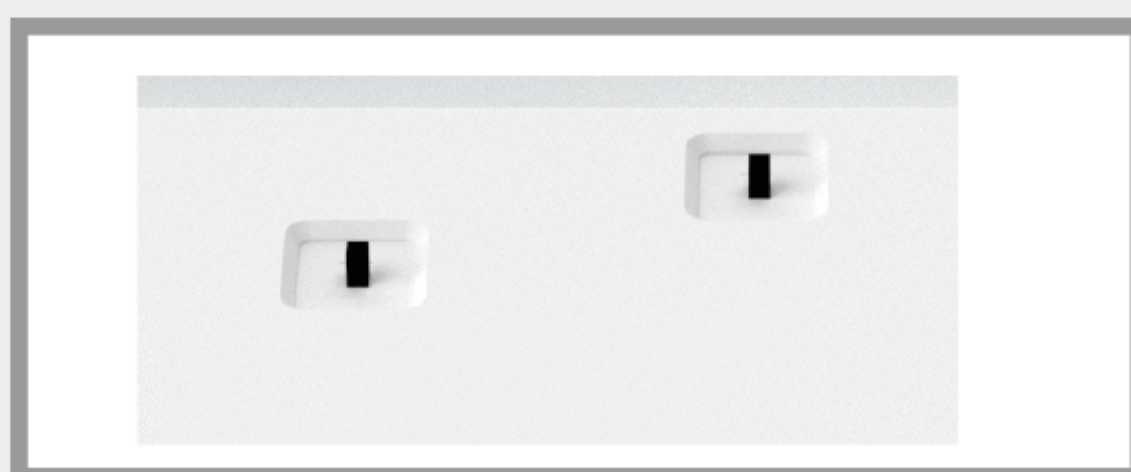
RADAR SENSOR PANEL LIGHT



ULTRA-NARROW EDGE
10mm



Surface Or Recessed Mounted
明暗装通用



3CCT&Power Adjustable
三色温、功率调节



Radar Sensor Switch
雷达感应调节

ULTRA-THIN INDUCTION PANEL LIGHT

力音照明
LIQIN



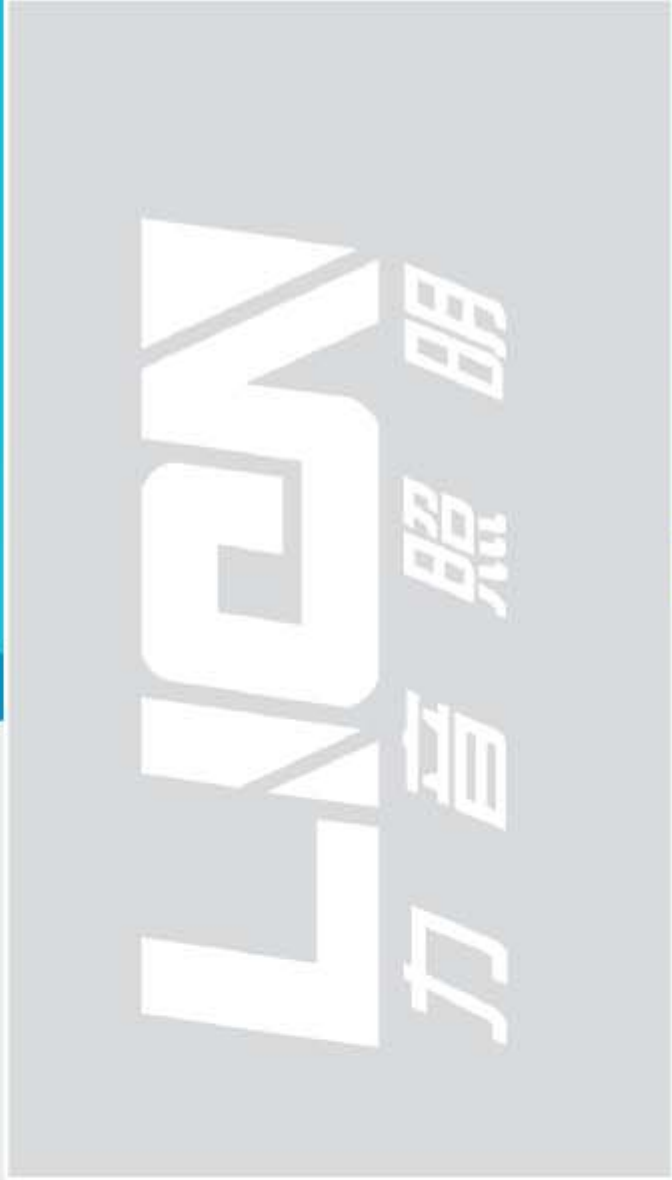
- ULTRA-NARROW EDGE DESIGN, MORE BEAUTIFUL
超窄边



ULTRA-NARROW EDGE
10mm 超窄边



01 - 功能介绍/Function Introduction



SENSOR PANEL LIGHT 感应面板灯



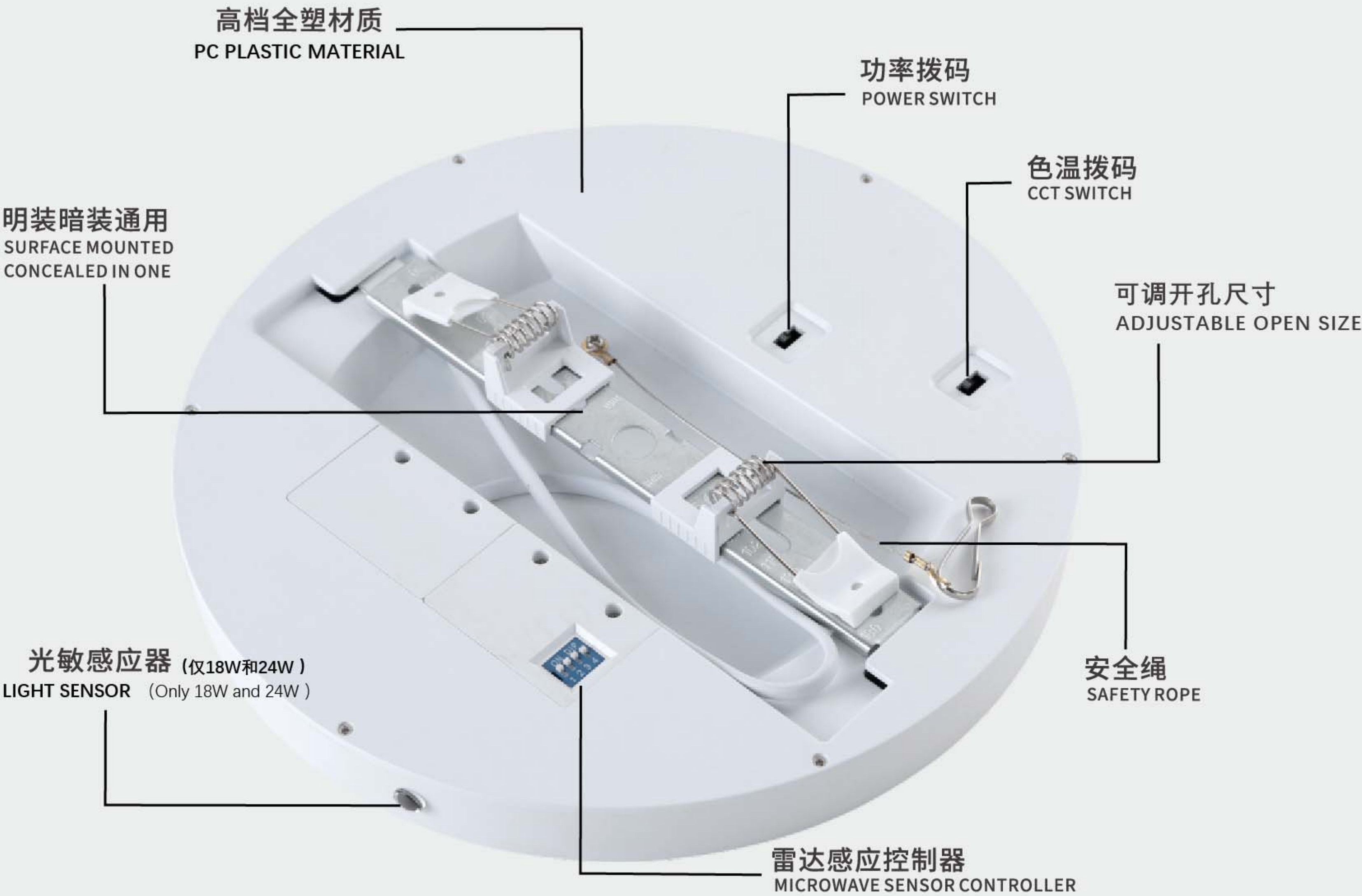
WW-暖光



NW-中性光



CW-白光

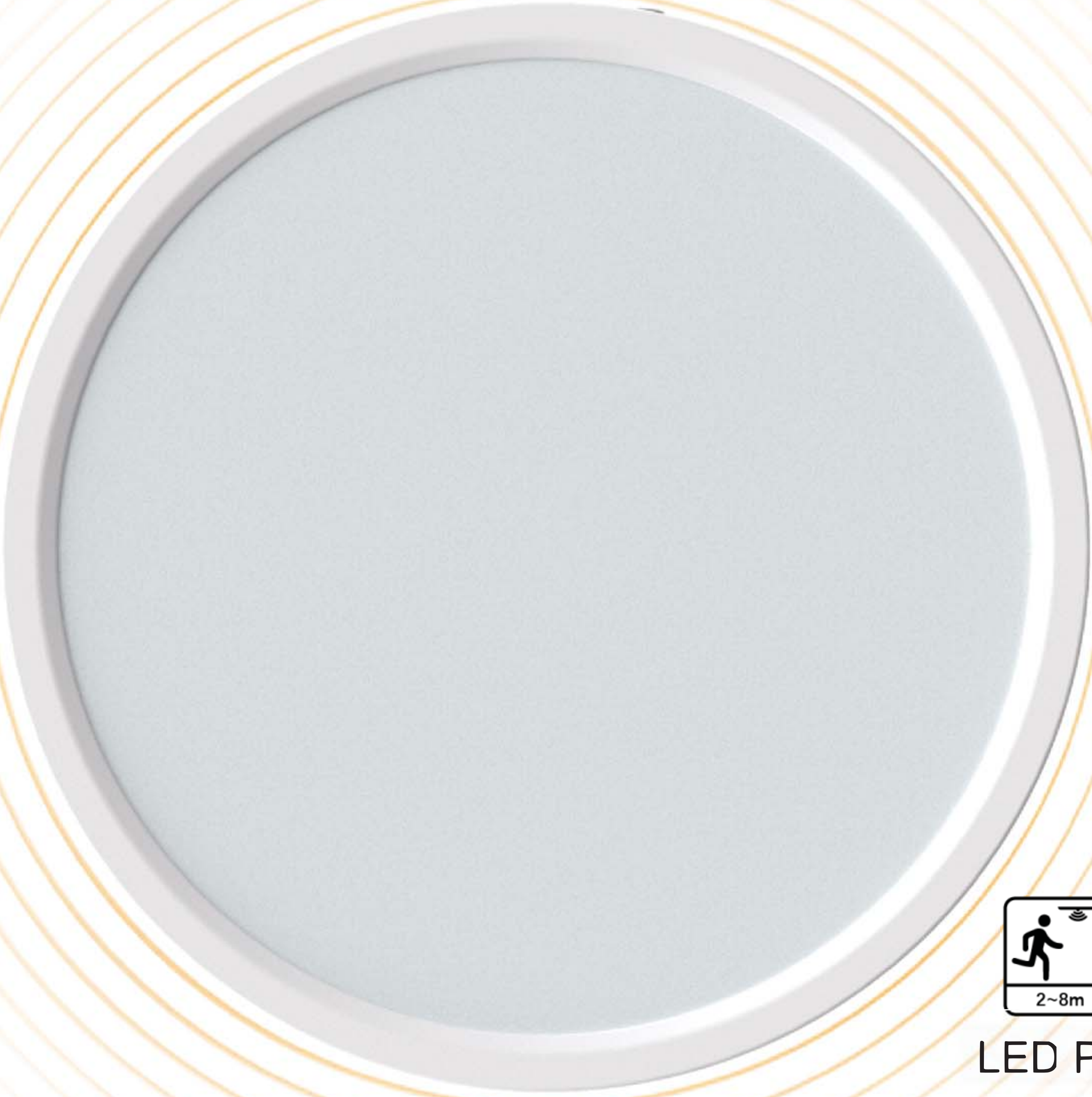


02 - 雷达感应

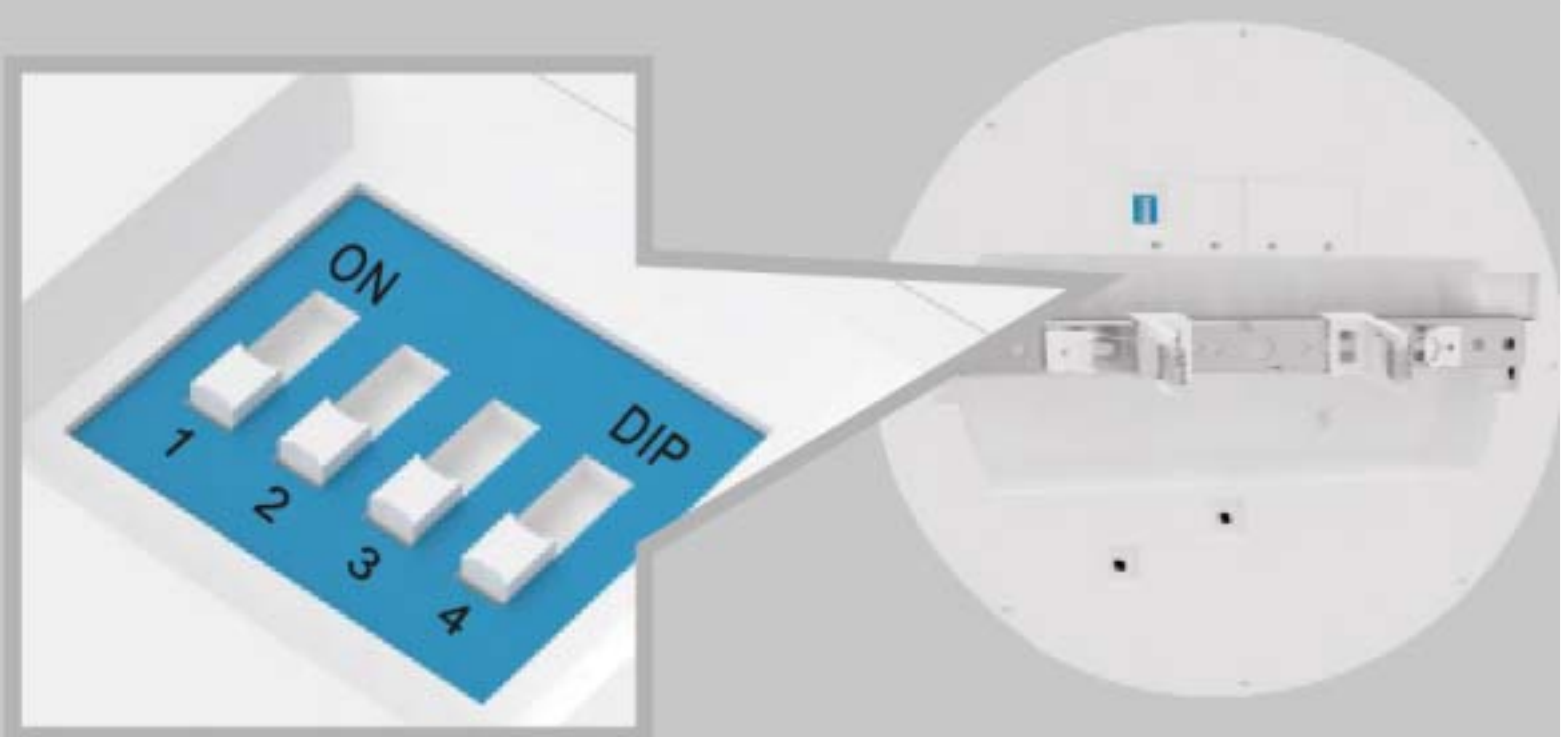
Radar/Microwave/Motion Sensor



- Adjustable sensor distance and sensor delay time
可调感应时间、距离
- 230mm and 300mm size can choose light sensor(only light on in night time)
230mm和300mm规格的可选带光敏
- Without Sensor Optional
可选配不带雷达感应



LED PANEL LIGHT
LIGHT SENSOR
雷达感应、光线感应



Microwave Sensor Adjust Instruction 感应调节说明

1 & 2 Adjust Sensor Distance调节感应距离 3 & 4 Adjust Sensor Delay Time调节感应时间

1	2	Sensor Distance
OFF	OFF	8 meters (8 米)
OFF	ON	4 meters (4 米)
ON	OFF	2 meters (2 米)
ON	ON	4 meters Light Sensor OFF (4 米 关闭光敏)

3	4	Sensor Delay Time
OFF	OFF	15 seconds (15秒)
OFF	ON	30 seconds (30 秒)
ON	OFF	60 seconds (60秒)
ON	ON	Sensor OFF (关闭雷达感应)



03 - 三色温拨码

3CCT Adjustable By Switch

DIMMING SWITCH

- Intelligent constant current driver,protect from overheat, short circuit,and undervoltage
- PC cover material, anti-uv and high temperature resistance
- 100lm/w-high luminous flux with even light
- Pass CE standard

Three Colors In One reduce your stock pressure,save transportation cost

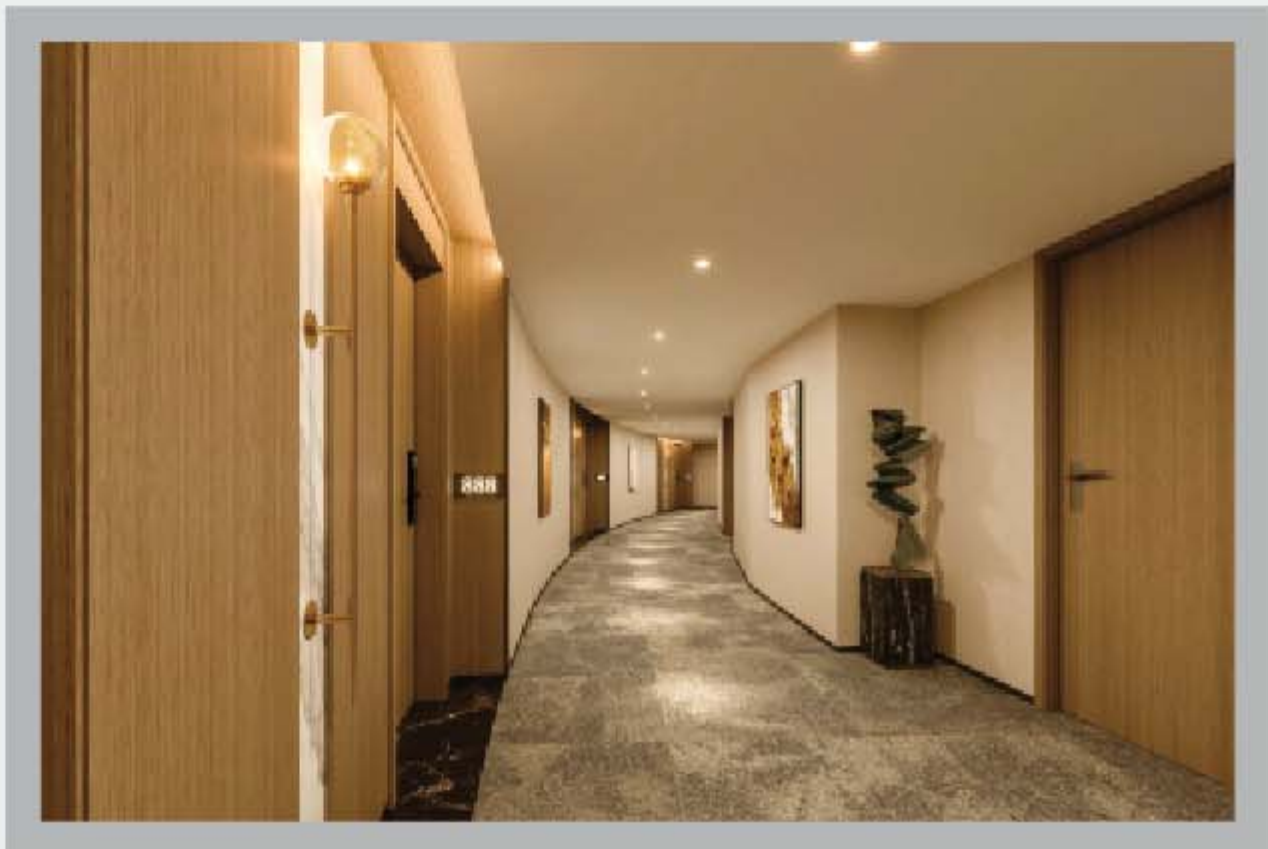
白光/暖光/中性光一体（一键调光），减少库存压力



WW 3000K



WW
3000K
➤



NW 4000K



NW
4000K
➤



CW 6000K

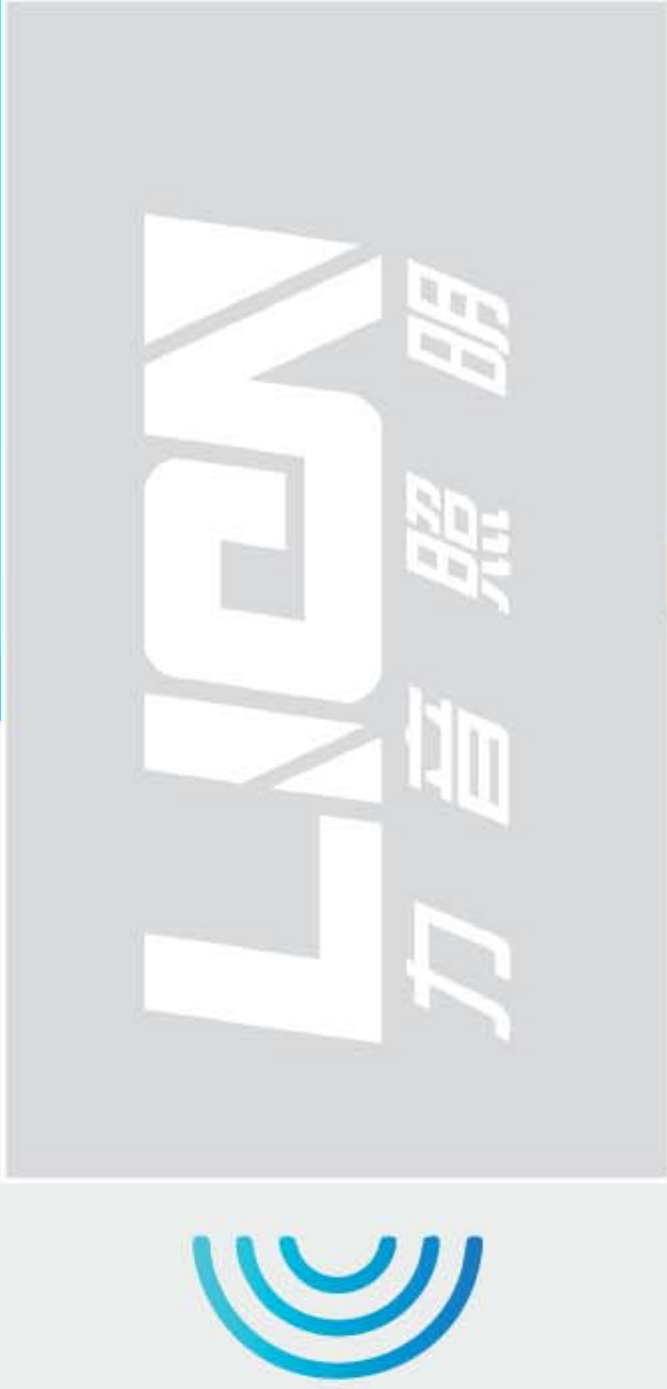


CW
6000K
➤



04 - 功率拨码

Power/Brightness Adjustable By Switch

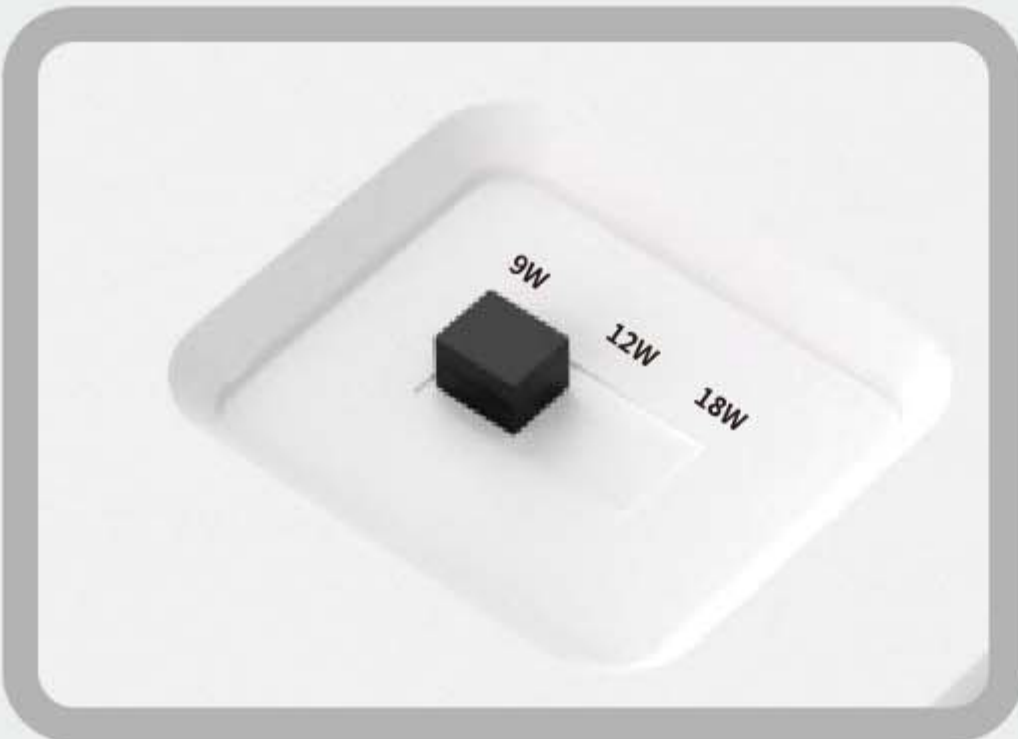


POWER SWITCH

- Intelligent constant current driver,protect from overheat, short circuit,and undervoltage
- PC cover material, anti-uv and high temperature resistance
- 100lm/w-high luminous flux with even light
- Pass CE standard

Three Power In One reduce your stock pressure,save transportation cost

三个功率一体（一键调功率/亮度），减少库存压力



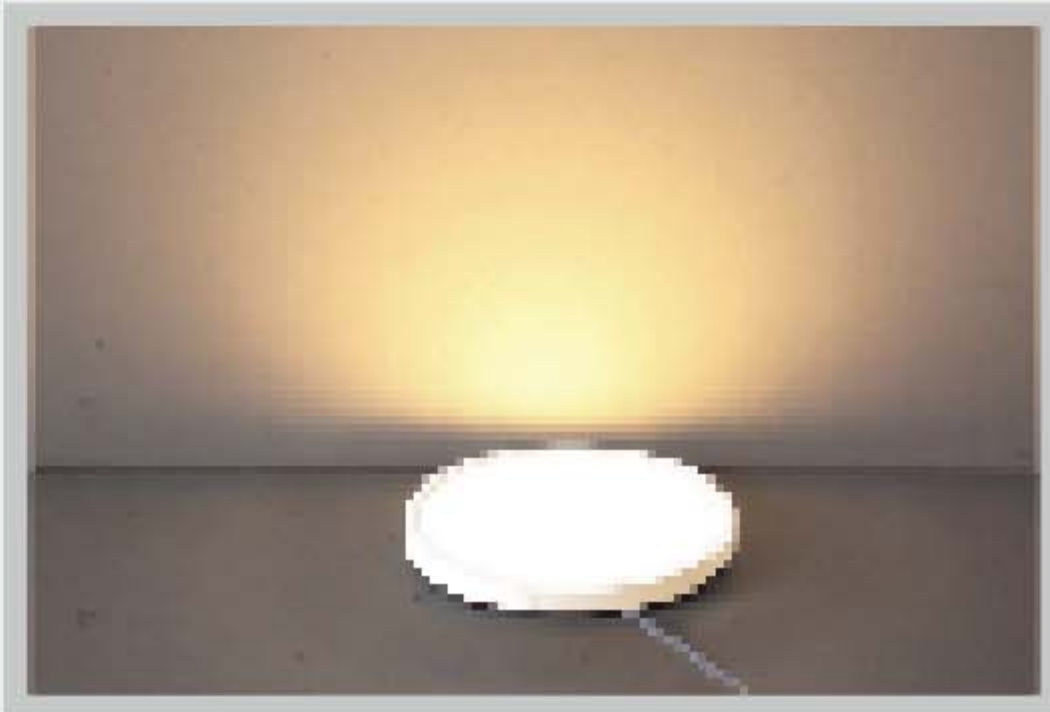
18W NOMINAL POWER



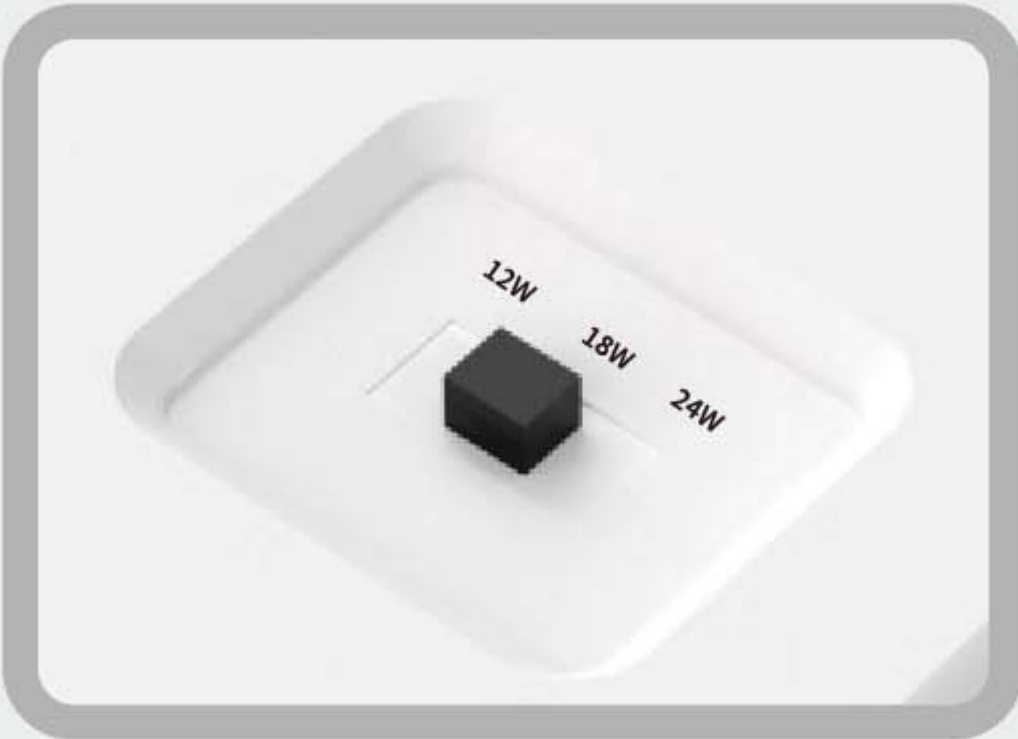
9W



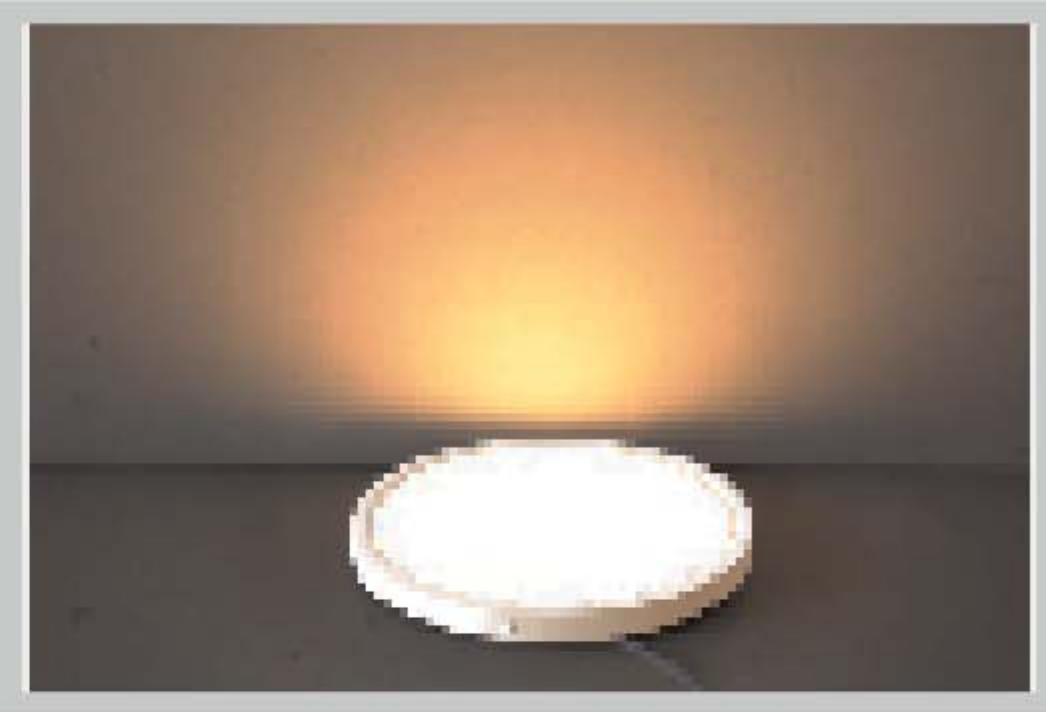
12W



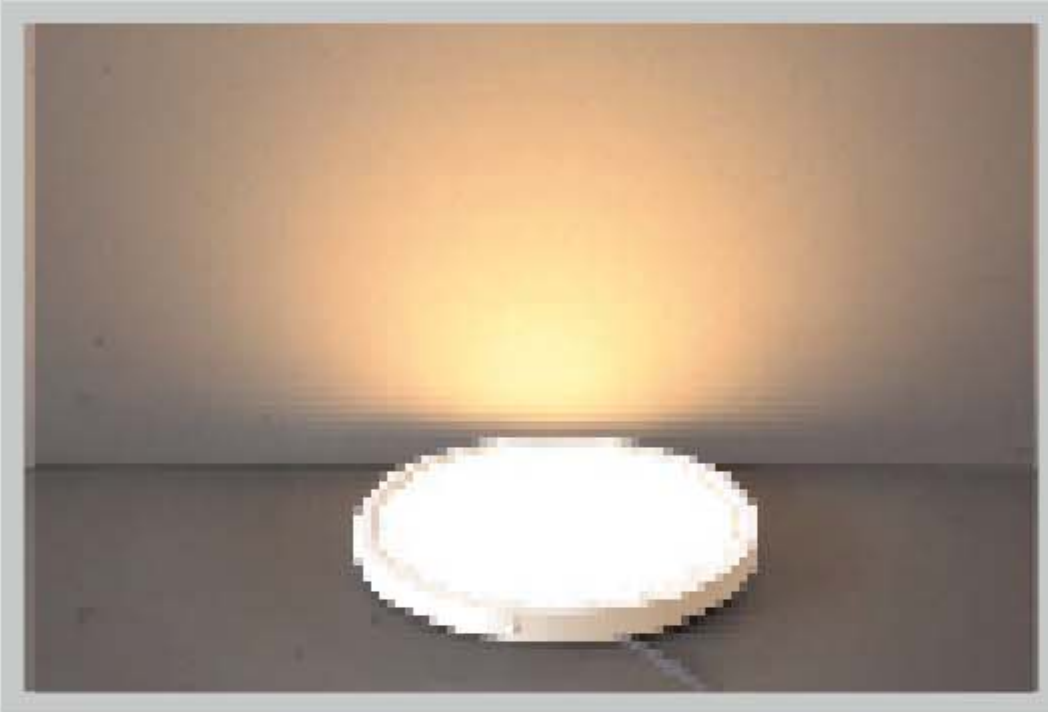
18W



24W NOMINAL POWER



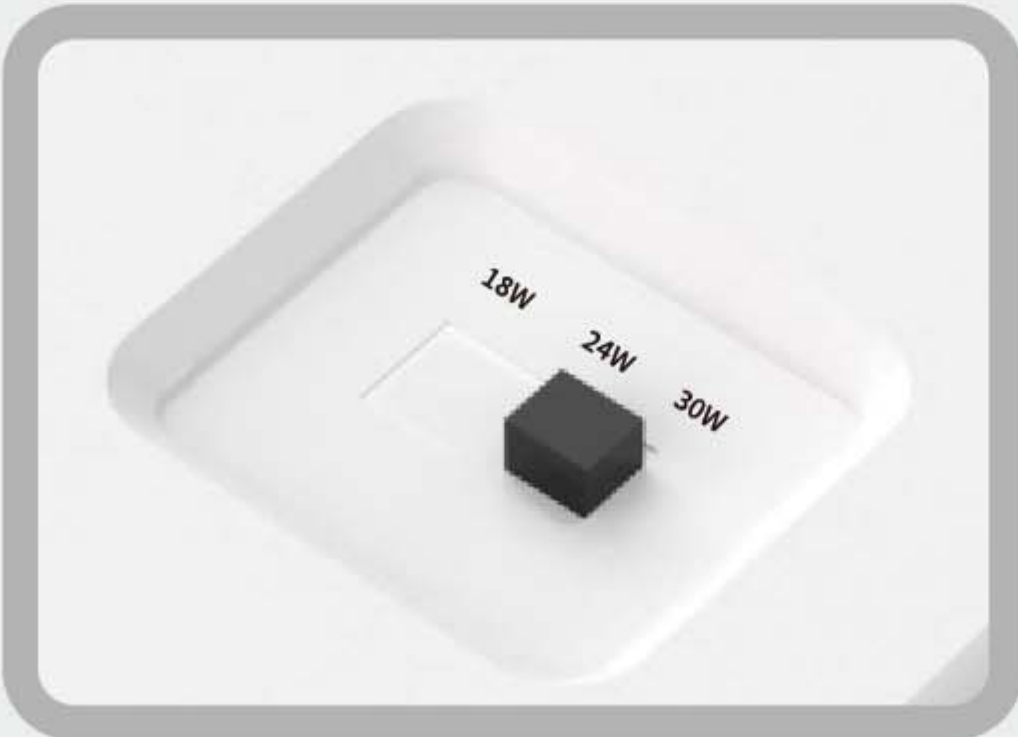
12W



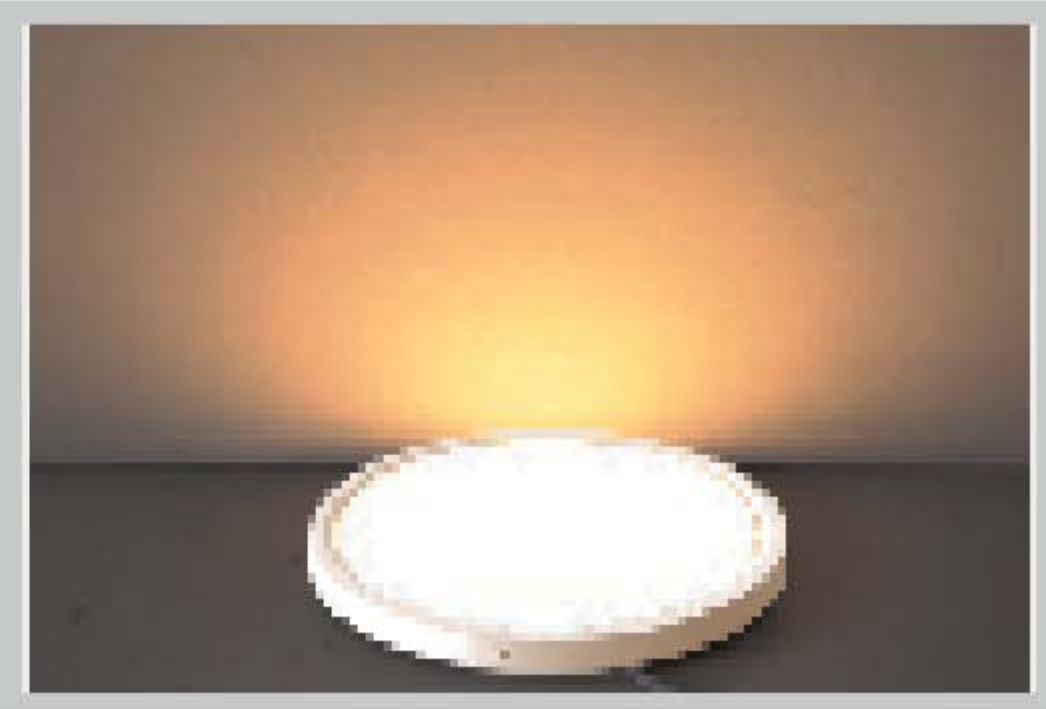
18W



24W



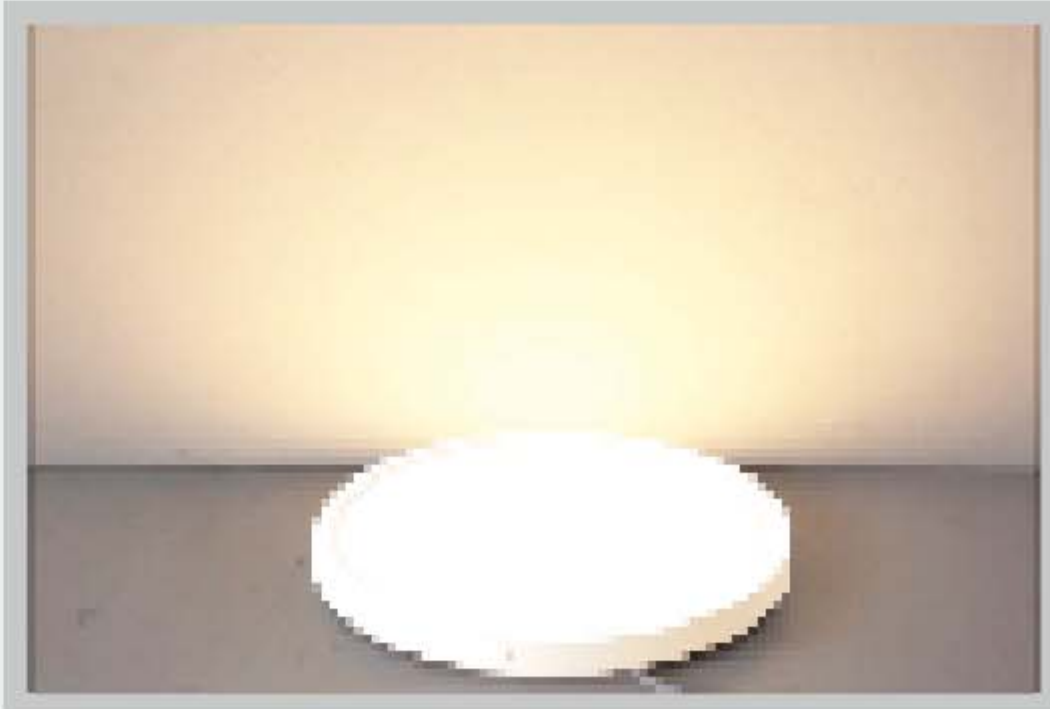
30W NOMINAL POWER



18W

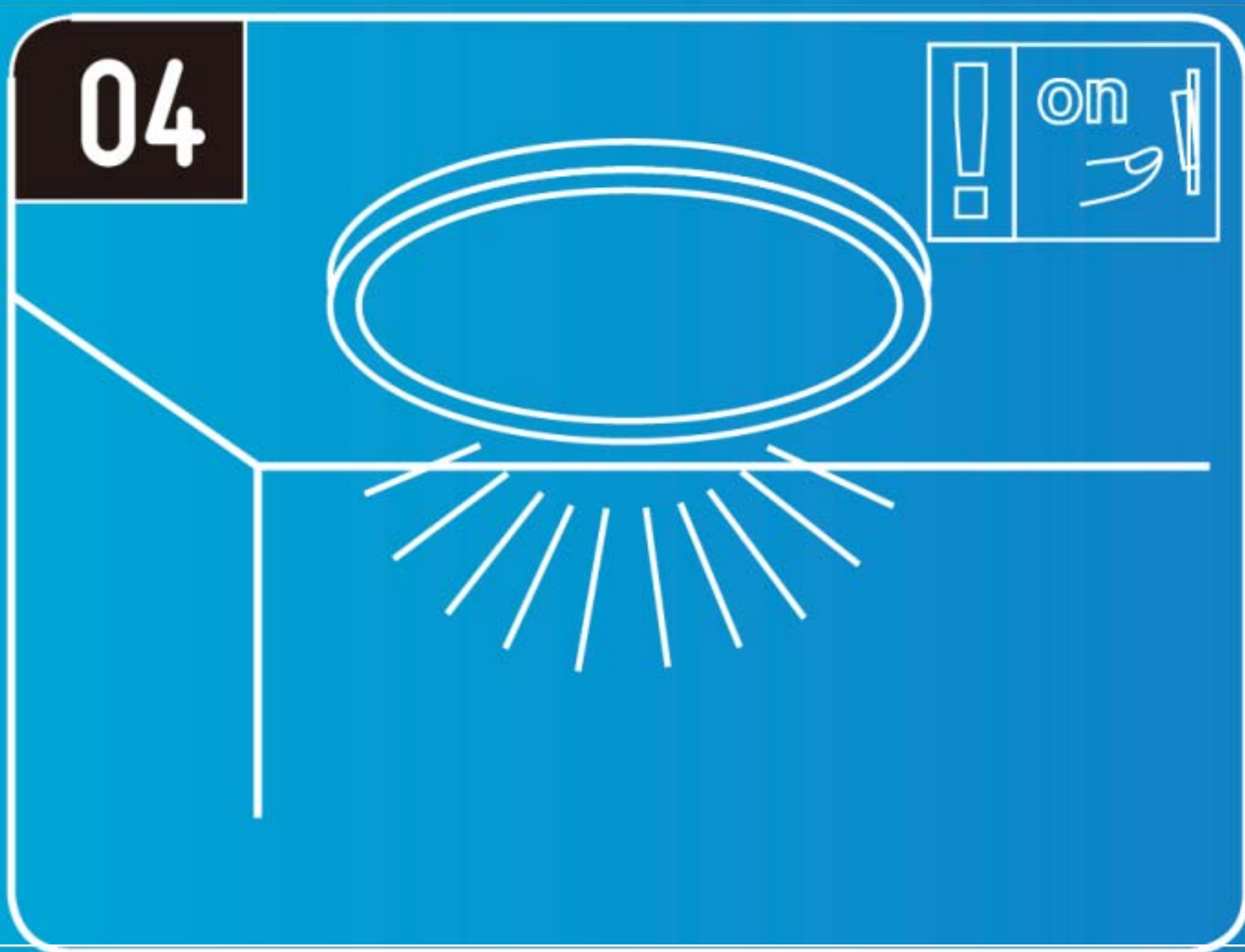
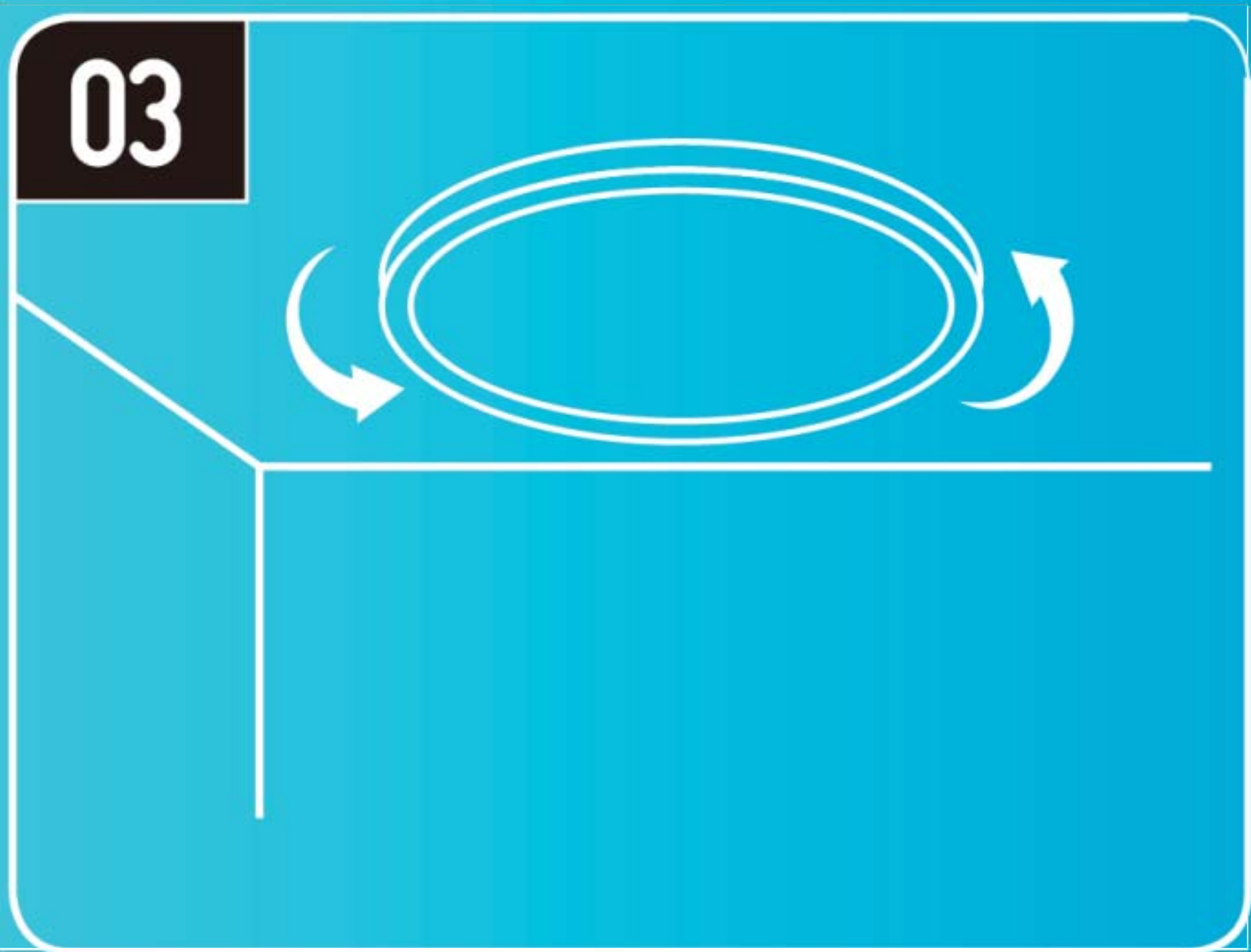
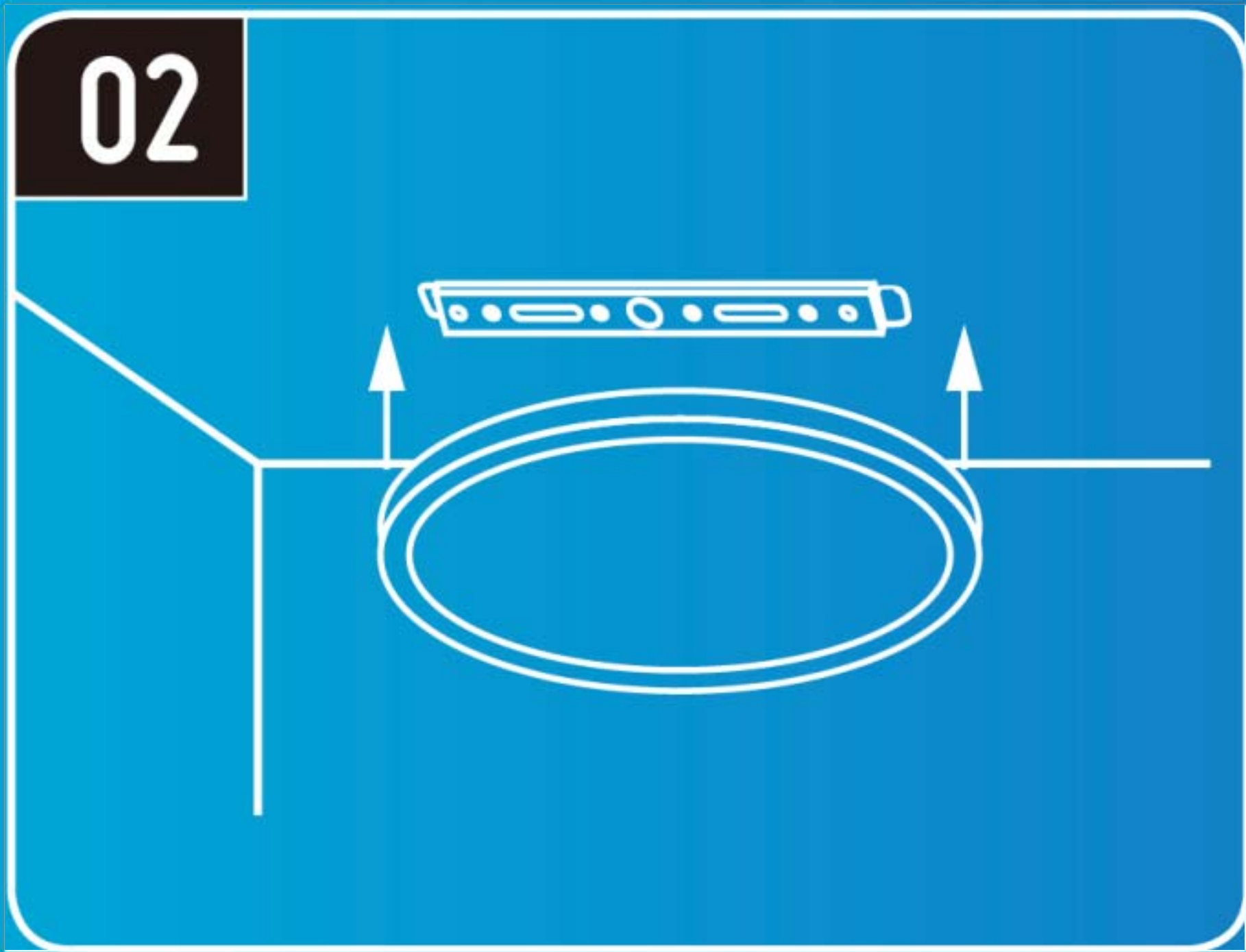
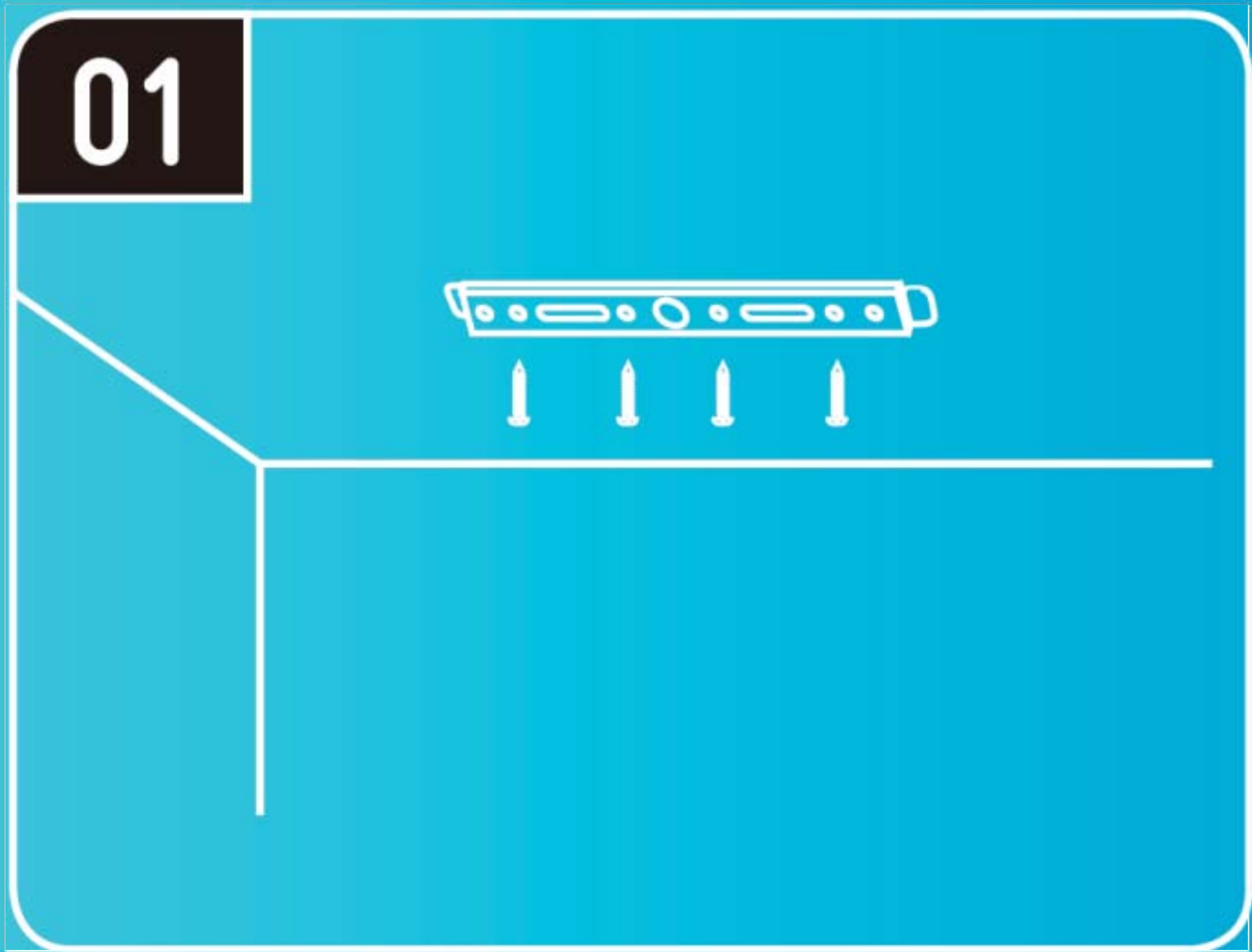
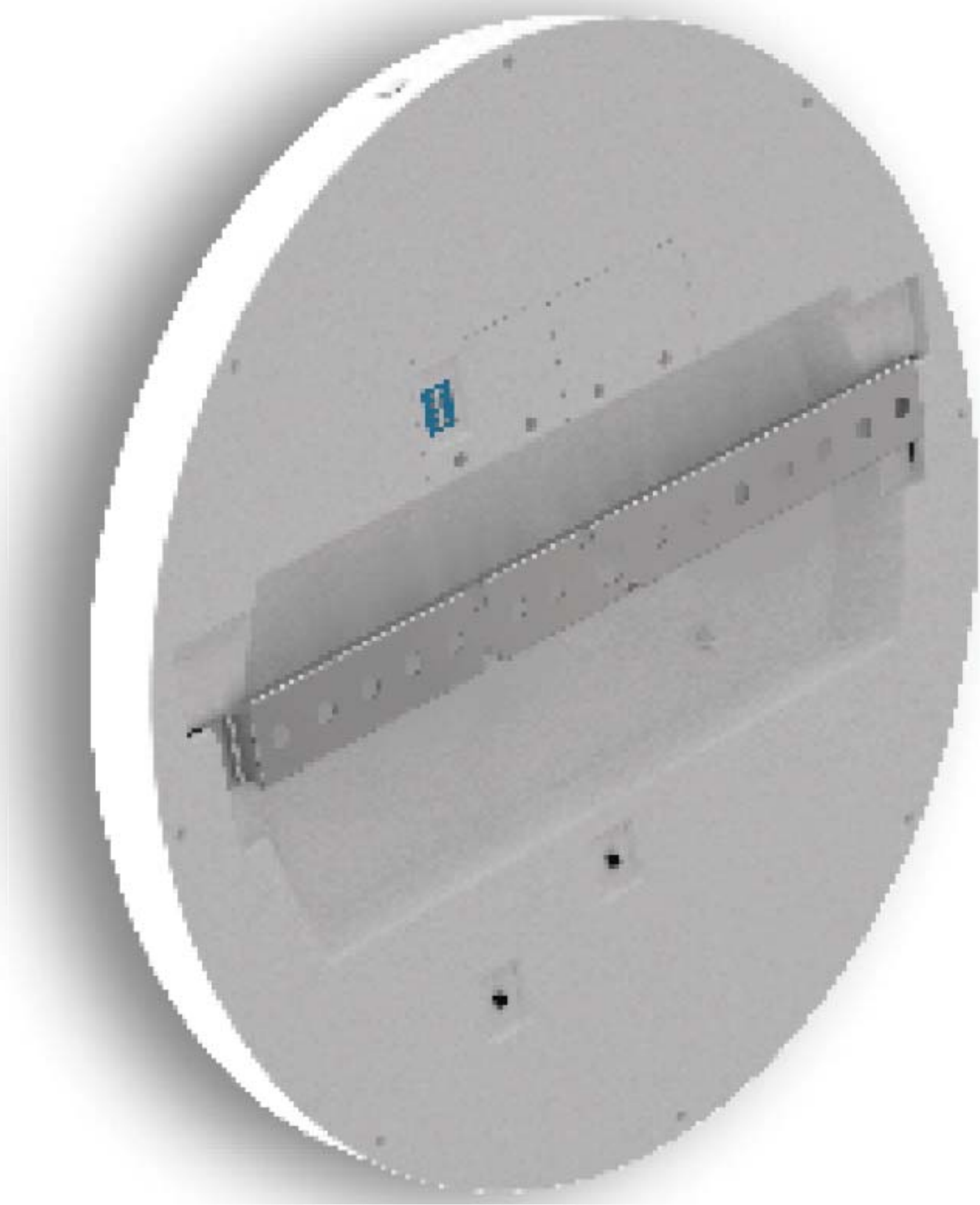


24W

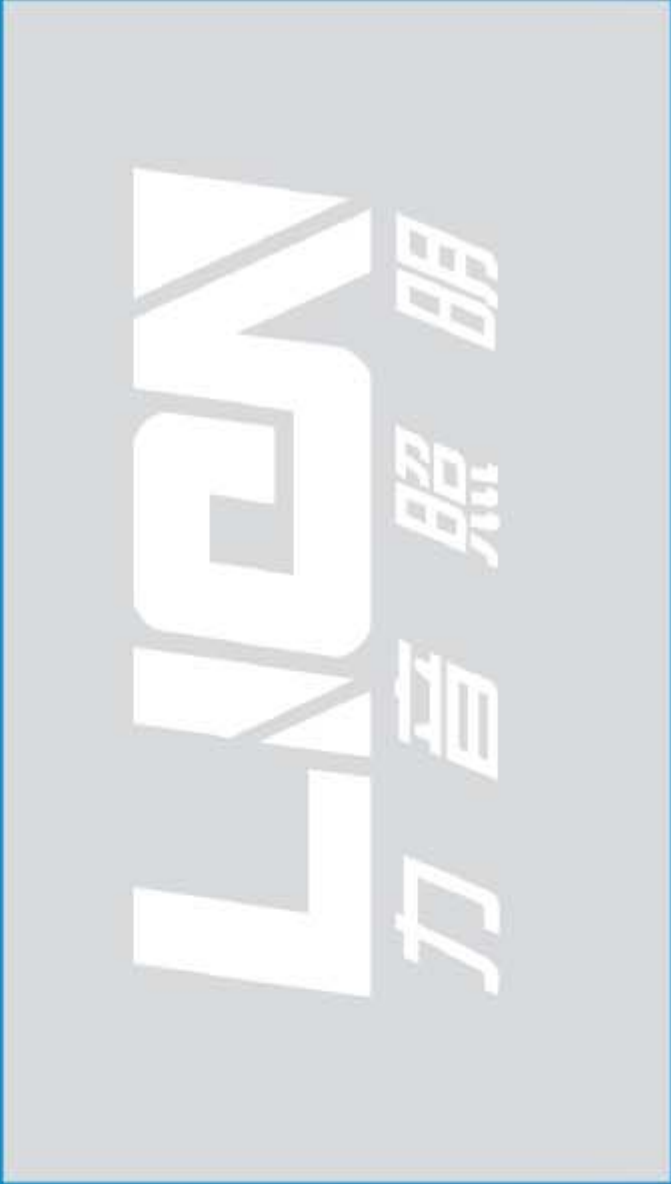


30W

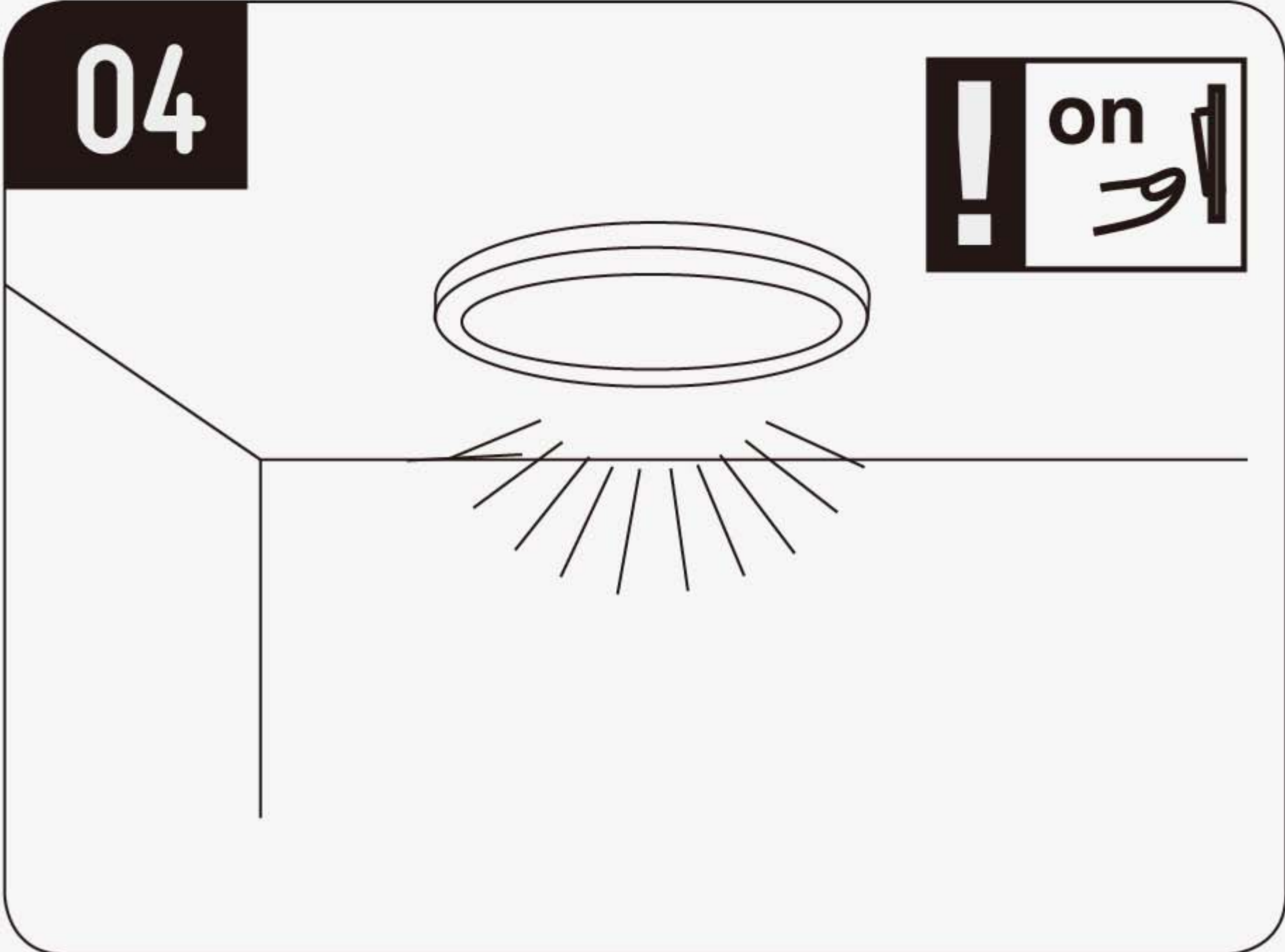
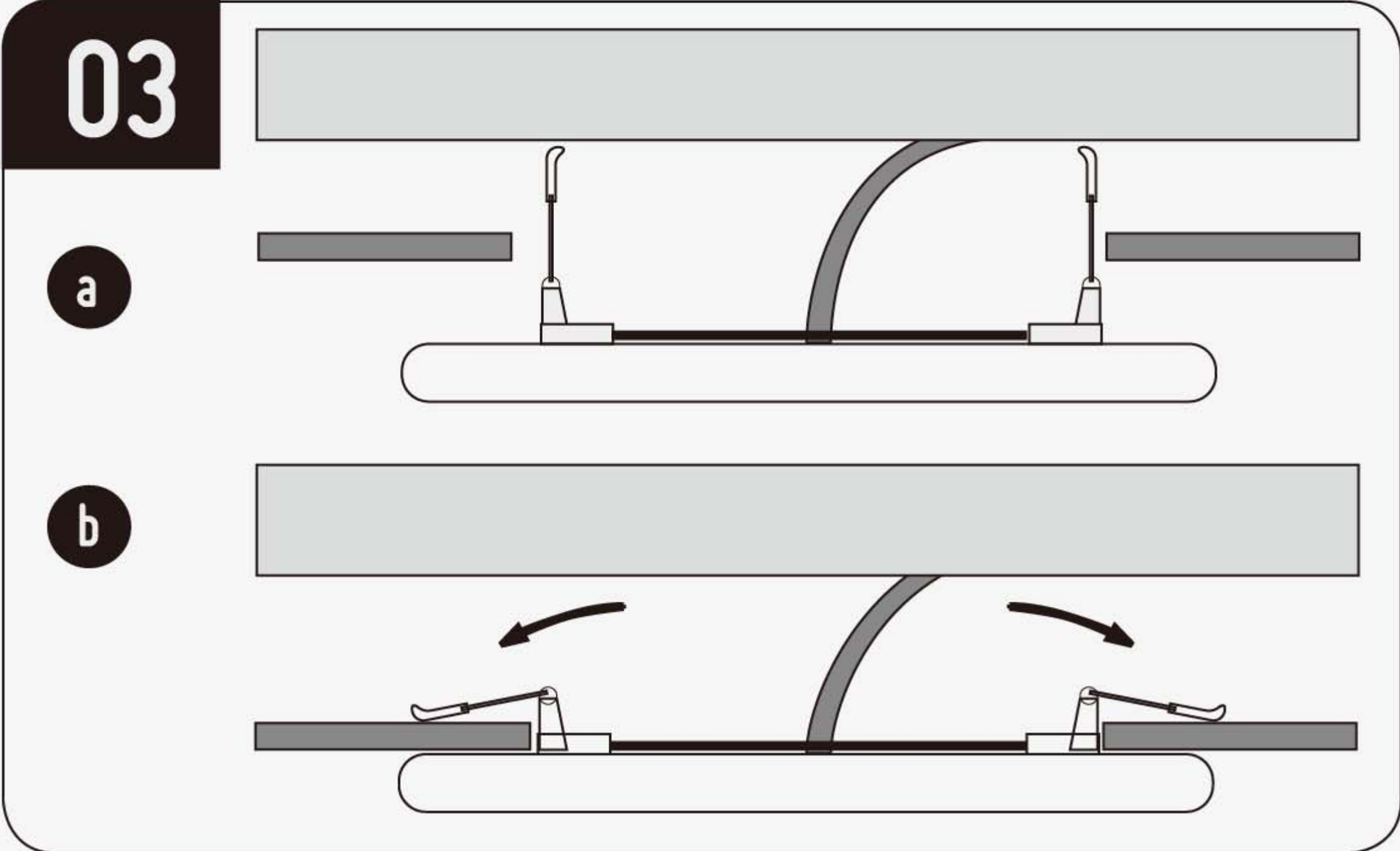
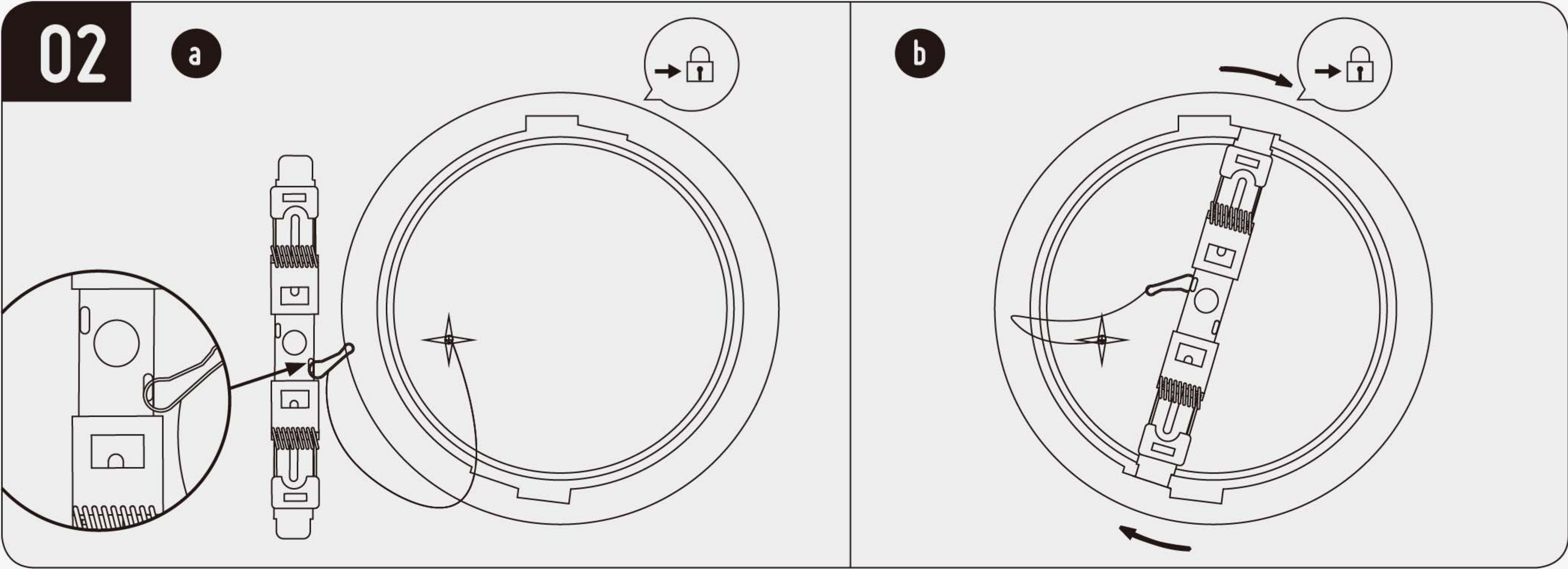
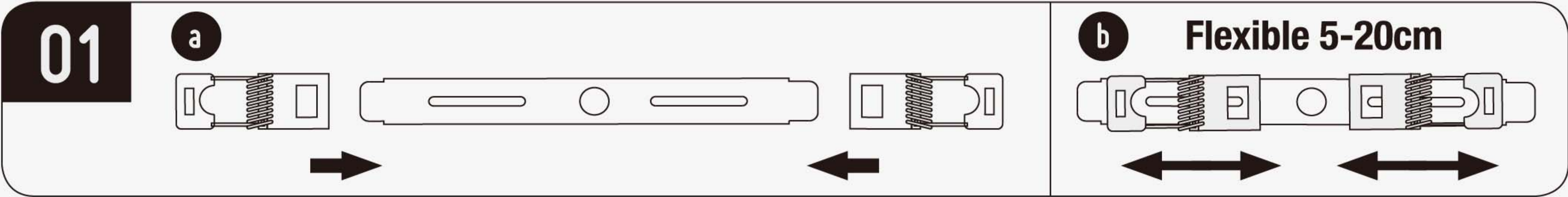
05 - 明装 /Surface Mounted



06 - 暗装
Recessed/Concealed Mounted



STEPLESS HOLE CUT



07 - 规格参数 / Parameter



ROUND SHAPE MULTI-FUNCTION PANEL LIGHT 圆形多功能

COLOR TEMPERATURE
3000K-6000K
90-130LM/W



Item No. 型号	Power 功率	Adjust Power 可调功率	Lamp Size 灯体尺寸	Cut Hole 可调开孔尺寸
APL-PB-2512-18W	18W	9W-12W-18W	D230*H25mm	55-185mm
APL-PB-2512-24W	24W	12W-18W-24W	D300*H25mm	55-255mm
APL-PB-2512-30W	30W	18W-24W-30W	D400*H25mm	55-255mm

FCC Warning Statement

Changes or modifications not expressly approved by the party responsible for compliance could void the user's authority to operate the equipment. This equipment has been tested and found to comply with the limits for a Class B digital device, pursuant to Part 15 of the FCC Rules. These limits are designed to provide reasonable protection against harmful interference in a residential installation. This equipment generates uses and can radiate radio frequency energy and, if not installed and used in accordance with the instructions, may cause harmful interference to radio communications. However, there is no guarantee that interference will not occur in a particular installation. If this equipment does cause harmful interference to radio or television reception, which can be determined by turning the equipment off and on, the user is encouraged to try to correct the interference by one or more of the following measures:

Reorient or relocate the receiving antenna.

Increase the separation between the equipment and receiver.

Connect the equipment into an outlet on a circuit different from that to which the receiver is connected.

Consult the dealer or an experienced radio/TV technician for help.

This device complies with part 15 of the FCC Rules. Operation is subject to the following two conditions:

- (1) This device may not cause harmful interference, and
- (2) this device must accept any interference received, including interference that may cause undesired operation.

RF Exposure Statement

To maintain compliance with FCC's RF Exposure guidelines, This equipment should be installed and operated with minimum distance of 20cm the radiator your body. This device and its antenna(s) must not be co-located or operation in conjunction with any other antenna or transmitter.