

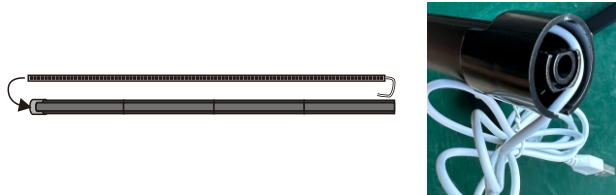
BK-MF-A85D/125D/165D

Installation Guide

Step 1 Fast Connecting the 2/3/4pcs Aluminum Profile.

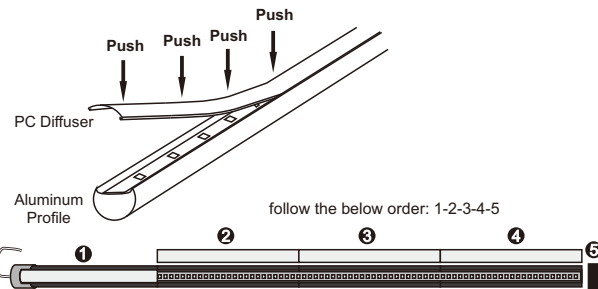


Step 2 Install the strip light in right direction, insert from bottom.

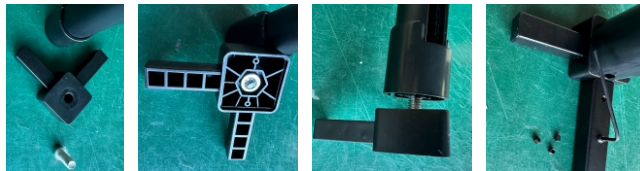


strip comes out from bottom

Step 3 Install 4 PC diffusers from bottom to top, and then top cap.



Step 4 Install heavy base and then fix it with lamp body.



Prepare these above.

Make the screw go through plastic base.

Screw into the nut in the tube.

Finally install the heavy tube to the plastic base.

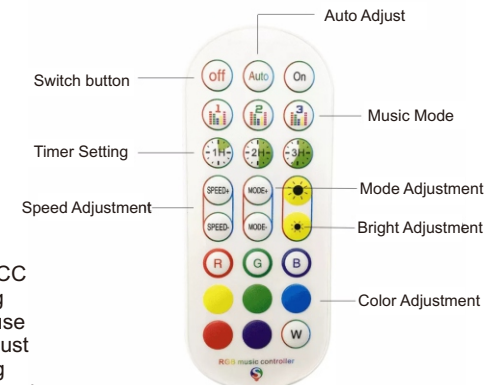
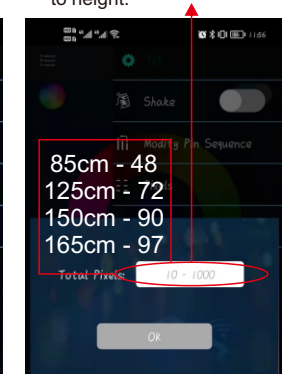
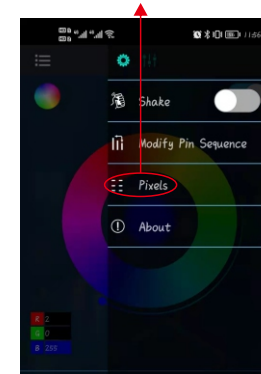
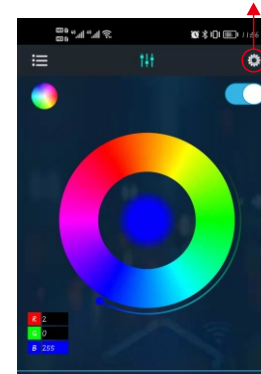
Model No	BK-MF-A85D	BK-MF-A125D	BK-MF-A165D
Light Color	RGB Digital	RGB Digital	RGB Digital
V-input	USB 5V	USB 5V	USB 5V
Control	App, Remote, Line-switch, Sound Sensor		
Material	Aluminum + PC		
Body Color	Black		
Application	Residential, Bedroom, Hotel, etc.		
Height	85cm	125cm	165cm
LED Pixel	48LED	72LED	97LED
Working Temp.	-20°C ~ 40°C		

Notice: If you find some lights do not work, try the below solution first:

1- Open App and click settings.

2- Click "Pixels".

3- Setting quantity according to height.



Warning:

This device complies with Part 15 of the FCC Rules. Operation is subject to the following two conditions: (1) this device may not cause harmful interference, and (2) this device must accept any interference received, including interference that may cause undesired operation. Changes or modifications not expressly approved by the party responsible for compliance could void the user's authority to operate the equipment.

NOTE: This equipment has been tested and found to comply with the limits for a Class B digital device, pursuant to Part 15 of the FCC Rules. These limits are designed to provide reasonable protection against harmful interference in a residential installation. This equipment generates, uses and can radiate radio frequency energy and, if not installed and used in accordance with the instructions, may cause harmful interference to radio communications. However, there is no guarantee that interference will not occur in a particular installation.

If this equipment does cause harmful interference to radio or television reception which can be determined by turning the equipment off and on, the user is encouraged to try to correct the interference by one or more of the following measures:

--Reorient or relocate the receiving antenna.

-- Increase the separation between the equipment and receiver

--Connect the equipment into an outlet on a circuit different from that to which the receiver is connected.

--Consult the dealer or an experienced radio/TV technician for help

NOTE: This device and its antenna(s) must not be co-located or operation in conjunction with any other antenna or transmitter

RF Exposure Statement

To maintain compliance with FCC's RF Exposure guidelines, this equipment should be installed and operated with minimum distance of 20cm the radiator your body. This device and its antenna(s) must not be co-located or operation in conjunction with any other antenna or transmitter.



Scan to Download App

BOKUN | L2U