

健家智能（厦门）科技有限公司
FITHOME (Xiamen) Technology Co., Ltd.

JJ-BLE 蓝牙嵌入式模块
JJ-BLEBluetooth embedded module



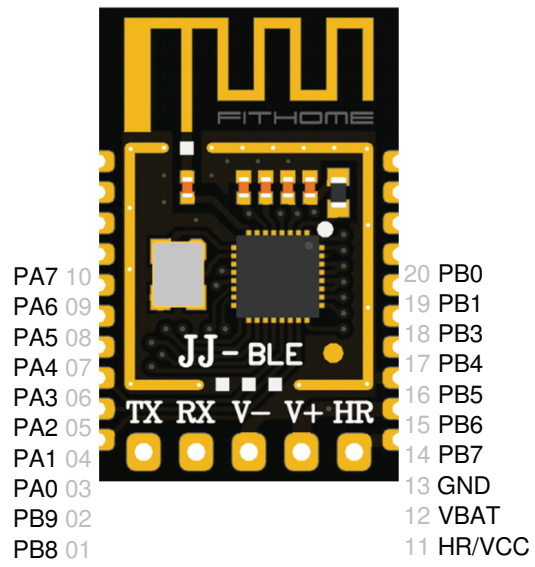
210-229544

模块参数 Module parameters

1 产品参数 (Specification)

2 外观与接口 Appearance and interface

蓝牙协议 Bluetooth protocol	Bluetooth Specification V5.2
工作频率 Working frequency	2400 ~ 2482 MHz
调制方式 modulation mode	GFSK(Gaussian Frequency Shift Keying)
发射功率 transmitting power	<0 dBm
灵敏度 response rate	$\leq -86\text{dBm}$
支持服务 Support service	Peripheral UUID FTMS
功耗 power dissipation	2 ~ 5 mA
工作温度 working temperature	-20 ~ 70 °C
工作电压 Voltage	DC: 3.0 - 5.0V
驱动能力 Drive ability	IO < 20mA, MAX: 100mA
外观尺寸 Size	14.5 mm x 23 mm x 2 mm



PIN	NAME	复用	说明
1	PB8		
2	PB9		
3	PA0		
4	PA1		
5	PA2		
6	PA3		
7	PA4		
8	PA5		
9	PA6		
10	PA7		
11	HR/VCC		5V输入
12	VBAT		3V输入 (V+)
13	GND		GND (V-)
14	PB7		
15	PB6		
16	PB5		
17	PB4		
18	PB3		
19	PB1		
20	PB0		

Caution: The user is cautioned that changes or modifications not expressly approved by the party responsible for compliance could void the user's authority to operate the equipment.

This device complies with Part 15 of the FCC Rules. Operation is subject to the following two conditions: (1) this device may not cause harmful interference, and (2) this device must accept any interference received, including interference that may cause undesired operation.

NOTE: This equipment has been tested and found to comply with the limits for a Class B digital device, pursuant to Part 15 of the FCC Rules. These limits are designed to provide reasonable protection against harmful interference in a residential installation. This equipment generates, uses and can radiate radio frequency energy and, if not installed and used in accordance with the instructions, may cause harmful interference to radio communications. However, there is no guarantee that interference will not occur in a particular installation.

If this equipment does cause harmful interference to radio or television reception, which can be determined by turning the equipment off and on, the user is encouraged to try to correct the interference by one or more of the following measures:

- Reorient or relocate the receiving antenna.
- Increase the separation between the equipment and receiver.
- Connect the equipment into an outlet on a circuit different from that to which the receiver is connected.
- Consult the dealer or an experienced radio/TV technician for help.

FCC Radiation Exposure Statement

This equipment complies with FCC radiation exposure limits set forth for an uncontrolled environment. This equipment should be installed and operated with a minimum distance of 20cm between the radiator and your body. This transmitter must not be co-located or operating in conjunction with any other antenna or transmitter.

The module in this product is labeled with its own FCC ID No. The FCC ID and is not visible when the module is installed inside another device. Therefore, the outside of the device into which the module is installed must also display a label referring to the module. The final end device must be labeled in a visible area with the following:

“Contains FCC ID: 2BEFF-JJBLE”