

WEBCAM

User guide

Preface

Thank you very much for purchasing our company's HD web camera products, which are widely used in network teaching, video broadcast, video chat, video conferencing, and other scenes. Through USB interface for signal transmission and computer connection, the product using professional image processing chip, with high quality photosensitive chip, to bring you the ultimate HD video experience. This product has the characteristics of compact size, convenient installation, strong stability and simple operation, Best choice for you.

This manual will explain in detail how to install, operate, product parameters and precautions, etc. Please read it carefully before use. And please take good care of it.

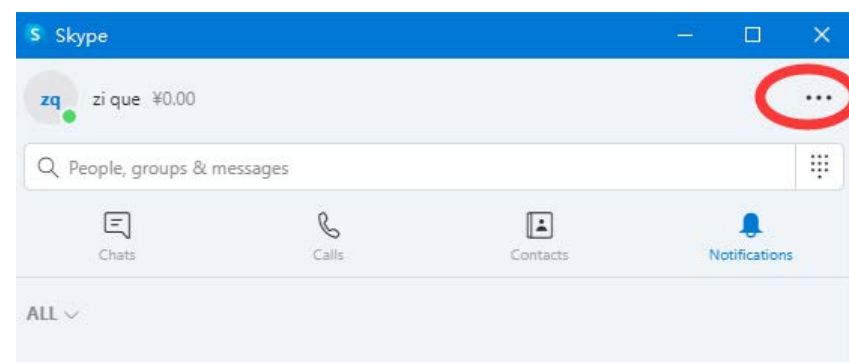
We hope this product can meet your needs and serve you for a long time! But the specifications may be changed due to the update and other reasons. Please refer to the actual product. We retain the right to change technology without prior notice.

A. Specifications

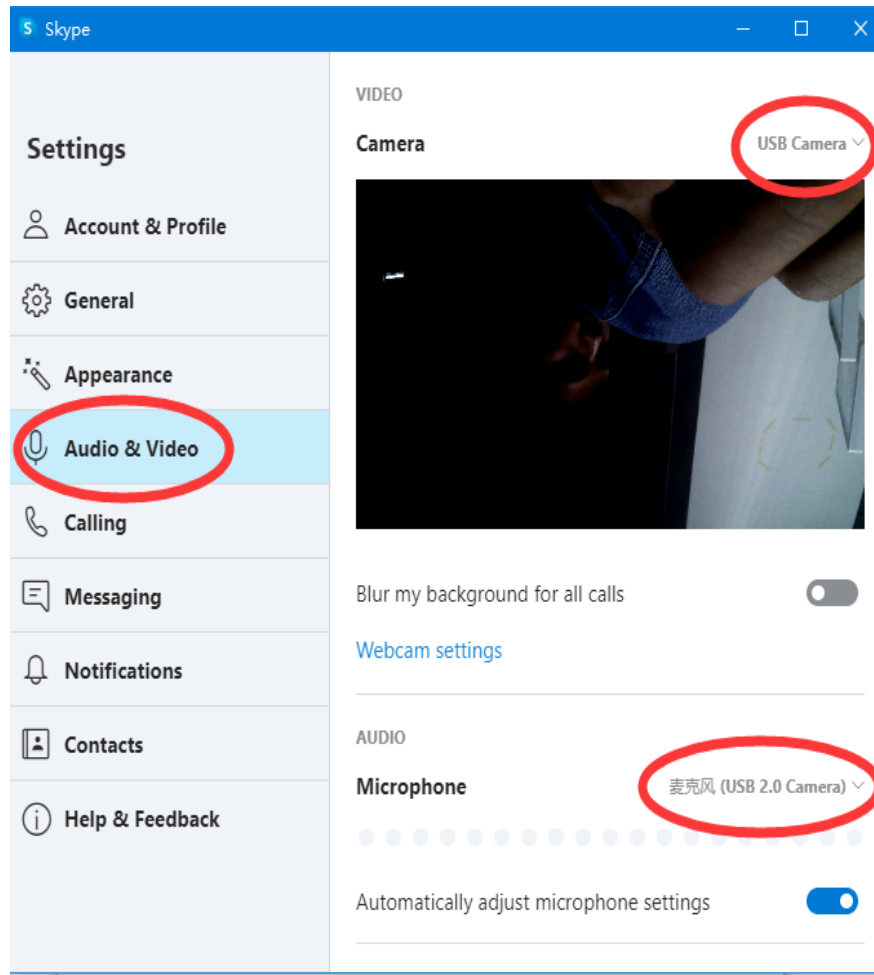
Product name	Webcam
Sensor type	CMOS sensor
Maximum resolution	4K / 1080 p / 720 p (optional)
Frame rate	10-30 frames/s
Interface	USB 2.0, compatible USB 3.0
Lens	A+ level high definition lens
Focus	manual / auto / fixed (optional)
Microphone	Built-in / Wireless microphone (optional)
Frequency	50 hz / 60 hz

B. Microphone / video Settings

1. SKYPE system Settings



2. SKYPE voice Setting & Video setting



C. Common problems and solving methods

1. Why there is no picture in the camera?

A: Please check whether the USB port of the camera is

plugged in or whether the USB port of the computer is plugged in there are damaged.

2. Why is the camera silent?

A: Open the video chat software, enter the system settings, select the audio microphone as "USB Microphone" of camera. If the accessory provides a wireless microphone, please long press its power button to turn it on. If it cannot be turned on, the battery may be low. Please charge it and try again.

3. Why does the camera feel a little fuzzy when plugged into the computer?

A: the camera needs to adjust the lens manually according to different environmental distances, and it will become clear immediately. The auto focus and fixed focus models will adjust and adapt automatically.

4. Does the camera need a driver?

A: the camera of this computer is driver free. You can plug in the USB port for video chat.

5. Why does the camera sometimes have no image?

A: This is a poor contact. You can try a USB port.

6. Why does the voice test sometimes have a very harsh scream?

A: built in sensitive microphone, do not test at close range, otherwise there will be a screeching sound. It is recommended to conduct long-distance voice chat. If you must test at close range, you must put computers of both sides of the chat into different rooms to test.

FCC Warning

This device complies with Part 15 of the FCC Rules. Operation is subject to the following two conditions:

(1) This device may not cause harmful interference, and (2) this device must accept any interference received, including interference that may cause undesired operation.

NOTE 1: This equipment has been tested and found to comply with the limits for a Class B digital device, pursuant to part 15 of the FCC Rules. These limits are designed to provide reasonable protection against harmful interference in a residential installation. This equipment generates, uses and can radiate radio frequency energy and, if not installed and used in accordance with the instructions, may cause harmful interference to radio communications. However, there is no guarantee that interference will not occur in a particular installation. If this equipment does cause harmful interference to radio or television reception, which can be determined by turning the equipment off and on, the user is encouraged to try to correct the interference by one or more of the following measures:

- Reorient or relocate the receiving antenna.
- Increase the separation between the equipment and receiver.
- Connect the equipment into an outlet on a circuit different from that to which the receiver is connected.
- Consult the dealer or an experienced radio/TV technician for help.

NOTE 2: Any changes or modifications to this unit not expressly approved by the party responsible for compliance could void the user's authority to

operate the equipment.

The device has been evaluated to meet general RF exposure requirement. The device can be used in portable exposure condition without restriction.

The device must not be co-located or operating in conjunction with any other antenna or transmitter.