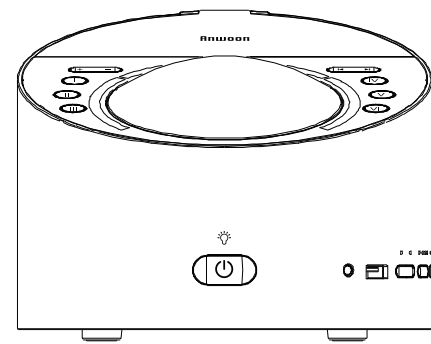


说明书尺寸: 105*155mm

铜版纸 128克 对折

Anwoon™

User manual

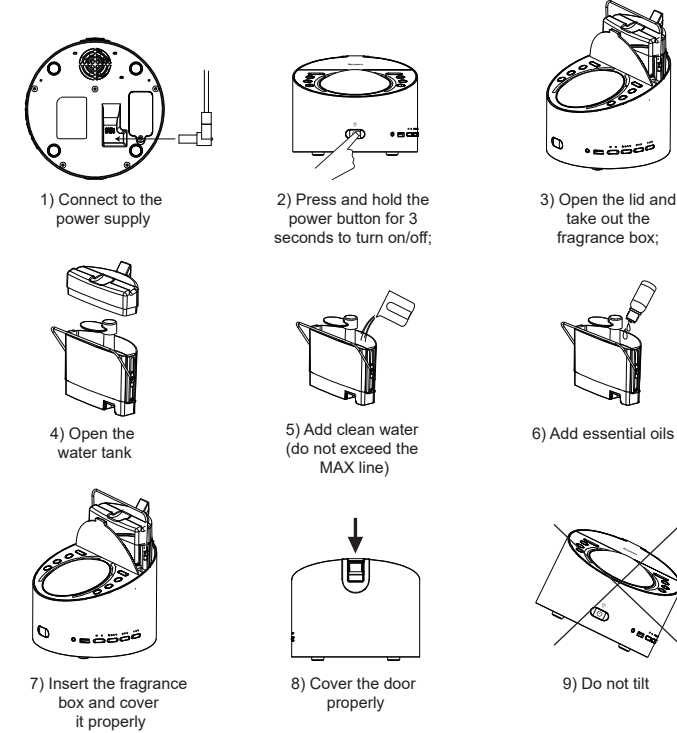


Model: Tiantin-1
Anwoon healthy technology Shenzhen Co.,Ltd.

Product Introduction

This product is a patented auxiliary product for sleep, meditation, relaxation, leisure. It is simple and convenient to operate, has excellent natural sound quality, as well as the Shumann wave can make people calm and lighting effect gives Baby Sleep Aid. Outstandingly, this product combined with Aromatherapy perfectly, fragrance box can be added Essential Oils in water or be a Humidifier. Our company focuses on the research&development of meditations and sleep aid products, has applied for multiple patents. The product patent numbers are 202330664540. X, 202311341853.7, 202322768079. X in China.

Quick operation guide



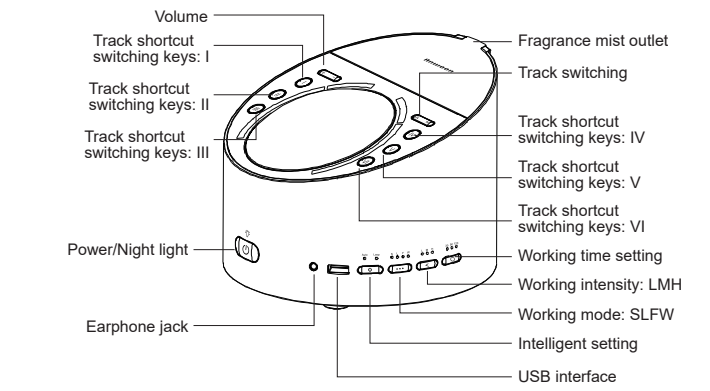
Precautions

- 1) After inserting the fragrance box correctly, the semi circular cover door on top of it can just be closed.
- 2) Do not exceed the max line by adding water, as exceeding it will affect the standard mist output.
- 3) If the fragrance box is not take out to add water, the fragrance box will not start working.
- 4) The fragrance box will automatically stop working when there is no water.
- 5) When adding water to the maximum waterline, it is recommended to add 3-4 drops of fragrance essential oil, or according to your preference. (For micro humidification without adding essential oil.)

Function on and off

Function on/off status				
Operation settings: 1) Press the function mode key to select the SLFW indicator light; 2) Press the operation intensity key to select the LMH indicator light; Turn on and off the functions of sound, lights, Aroma Diffuser, and Mambo.				
	Factory startup status	Startup prompt	Switch operation	Voice prompts
Sound effect	This function is enabled by default;	Play default tracks	Select ●●● the S light of SLFW to turn on, and then operate the < LMH light to select all three lights to turn off, which is to turn off this function.	Sound turned off
Light effect	This function is disabled by default;	RGB light flashing	Select ●●● the S light of SLFW to turn on, and then operate the < LMH light to select one of the three lights to turn on, which is to activate this function.	Lights turned on
Aroma Diffuser	This function is enabled by default;	Aroma diffuser connected	Select ●●● the S light of SLFW to turn on, and then operate the < LMH light to select all three lights to turn off, which is to turn off this function.	Aroma diffuser turned off
Manbo	This function is enabled by default;	Schumann wave turned off	Select ●●● the S light of SLFW to turn on, and then operate the < LMH light to select one of the three lights to turn on, which is to activate this function.	Schumann wave turned on

Detailed operating instructions



1. Sound effect operation and management

●●● Volume intensity		
●●●	S light on	Set 'Working Intensity' for sound effects function
<	L light on	Set the volume to weak, 50% of the strong volume
	M light on	Set the volume to medium, at 80% of the strong volume
	H light on	Set the volume to strong, at 100% of the strong volume
● Track shortcut switching/Track switching		
⓪ ① ② ③ ④ ⑤ ⑥	Track shortcut switching keys I, II, III, IV, V, VI	Play the corresponding directed track
⏪ ⏩	Track switching key	Track switching up/down
● Track shortcut keys pointed to replacement		
You can replace the Track shortcut keys pointed to by pressing the "Track Shortcut Switching Key", Press and hold the Track Shortcut Switching Key for 3 seconds, and the Track Shortcut Switching Key will point to the currently playing track and save it. (This function is only valid for built-in tracks in SD-Card)		

● Sound source switching		
1) Built-in track playback	This product has a built-in 256MB SD-Card to store audio files, which is the default built-in playback track for this product.	
2) USB drive track playback	Insert USB flash drive, automatically recognized and play	Playing audio files from the USB drive (audio files need to be stored in the root directory), supporting WAV/MP3 format.
3) Bluetooth track playback	Press and hold this working mode key for 3 seconds	Built in track playback/Bluetooth playback mode for switching. After switching to Bluetooth playback mode, there will be a voice prompt: Bluetooth mode, other devices with Bluetooth function can search for "TianTin1", click on the connection to pair and connect with Bluetooth, and after successful connection, there will be a voice prompt: Bluetooth is connected.
● Built-in audio track replacement		
The built-in tracks can be managed by connecting to a PC through USB port.		
Connecting a computer	After connected to the computer using a USB cable, the computer recognizes this product as a USB storage drive and can delete or add audio files stored in the product, replacing them with your favorite audio files.	

2.Aroma Diffuser operation		
1) Strength selection		
●●●	F light on	Set the 'Working intensity' for the Aroma Diffuser function
<	L light on	Set to intermittent fogging, with MAX waterline working for 10 hours
	M light on	N/A
	H light on	Set to continuous fogging, with MAX waterline working for 5 hours
● Waterless alarm processing		
If there is no water in the fragrance box, when the device is turned on, inserted, or the fragrance function is turned on, the voice prompt "Aroma diffuser out of water, please check" will appear. If there is no water during using, the fragrance box will automatically stop working and no voice prompt will be given.		
3.Light effect operation		
1) Intensity setting, color display, presentation method		
●●●	L light on	Set the "working intensity", "color display", and "presentation method" for the light effect function.
<	When the ●●● "L light is on"	Light effect function setting "working intensity": L represents weak light effect brightness, M represents medium light effect brightness, and H represents strong light effect brightness.
⏪ ⏩	When the ●●● "L light is on"	Select the previous/next light effect color display
⏪ ⏩	When the ●●● "L light is on"	Choose the previous/next lighting presentation method

4.Manbo operation

1) Strength setting		
●●●	W light on	Set the 'Working intensity' for the Shumanbo function
<	L light on	Schumann wave function setting "working intensity": weak
	M light on	N/A
	H light on	Schumann wave function setting "working intensity": strong.

5.Timer setting

1) Timer setting		
●●●	S light on	Set the 'running time' for sound effect functions
Press this key, then according to the lights on to set its working time	L light on	Set the 'running time' for the light effect function
	F light on	Set the 'running time' for the Aromadiffuser function
	W light on	Set the 'running time' for the Mambo function
Working time key	The "30" light is on	The running time of this function mode item is set to 30 minutes
	The "90" light is on	The running time of this function mode item is set to 90 minutes
	The "120" light is on	The running time of this function mode item is set to 120 minutes
	No light on (none of the above three lights are on)	The 30/90/120 lights are all off, to this function mode is untimed and does not limit the running time.
2) Infinite time setting If you select No light on during operation, it is set to infinite time for this function. When Aromadiffuser function is untimed, there is no water in the fragrance box water tank, it will automatically stop working.		

6.Intelligent setting

Intelligent setting key	Auto light on	Set to automatically run all functions of this Machine function mode
	Loop light on	Loop once that has been effectively set for the last memory of all function modes
	No light on	Loop once that has been effectively set for the last memory of all function modes

7.Night light operation

Night light operation	Night light operation	White light on
	Night light operation	White light off

Built-in tracks

Note: The built-in tracks from the factory are for demonstration sound effects. Users can use USB Type-A interface cables at both ends to connect the machine and computer for self replacement according to their preferences.

- The built-in sound effect track files of the product are only for the user's functional experience.
- The built-in sound effect track files of the product are all from free online resources. If there are any copyright issues involved, the copyright owner or authorized operator can contact with us.

Track classification	Track Content Description	file name
1.Sleep aid noise		
1	white noise	Sleep aid white noise 007.mp3
2	Pink noise	Sleep aid pink noise 008.mp3
3	Red noise	Sleep aid red noise 009.mp3
2.The sound of rain and waves		
4	Mountain stream	Mountain stream 002.mp3
5	The sound of rain on summer night	The sound of rain on summer night 010.mp3
6	The sound of waves	The sound of rain on summer night 011.mp3
7	The sound of beach waves	The sound of waves hitting the beach 005.mp3
8	dripping	Regular dripping sound 012.mp3
9	Deep hypnosis by the sound of rain	The hypnotic and comfortable sound of thunder and rain 003.mp3
3.Sleep Aid Synthetic Music		
10	Sleep Aid Synthetic Music	Relieve anxiety and tension before bedtime 001.mp3
11	Sleep calming music	Hypnosis before bedtime 013.mp3
4.Sleep Aid Synthetic Music		
12	Delta wave	Hypnosis before bedtime 014.mp3
13	Theta wave	Theta brainwave simulation for deep relaxation 015.mp3
14	Alpha wave	Alpha brainwave simulation relieves anxiety 016.mp3
5.Meditation Song Bowl Sound		
15	The sound of SongBo	SongBo Meditation 006.mp3
16		SongBo bowl percussion 017.mp3

6.The Voice of Nature			
17	Forest white noise	The Sound from Natural Forests	004.mp3
18	Sound inside the cabin during flight	Aircraft cabin midway flight (white noise)	018.mp3
19	Heartbeat sound	Regular heartbeat sound	019.mp3
20	Bugle sound	Bugle sound	020.mp3
21	The sound inside the train carriage	The sound inside the moving train carriage	021.mp3
22	Neonatal white noise	Neonatal white noise comes from the mother	022.mp3
23	Cricket chirping	Neonatal white noise comes from the mother	023.mp3
24	The sound of fireplace burning	The sound from the fireplace	024.mp3

Troubleshooting

Serial number	Phenomenon description	Solution
1	Unable to produce fog or low fog volume	Please check if the water volume exceeds the maximum water line, and if it exceeds, reduce the water volume. If it does not exceed, check if the Aromadiffuser function is turned off.
2	No fogging during startup	Please check if there is a voice prompt saying "Aroma diffuser connected..." when the Machine turning on. If not, confirm that the fragrance box is not properly plugged in; If there is a voice prompt saying "Aroma diffuser out of water, please check", it means that the fragrance box is out of water, please add water in time.
3	No light effect	Please check if the Light effect function is turned off and can be turned on by operating the function keys. Please refer to this user manual relational instructions.
4	No sound effect	Please check if the Sound effect function is turned off and can be turned on by operating the function keys. Please refer to this user manual relational instructions.
5	upgrade software	① Firstly, copy the New software fw5000.upd into the root directory of the USB drive; ② In the working state, insert this USB drive into the USB interface of this product, and the product will automatically complete the software upgrade operation. During the upgrade process, the light will turn green. ③ After completed the software upgrade, it will automatically shut down. Please restart to use this product normally.
6	Restore the factory settings	Press the Intelligent setting key and hold on 10 seconds to restore the factory settings. After success, all indicator lights flash twice.

Product specifications

specifications						
Sound effects	Speaker	3 inches	frequency range	90Hz-20KHz	Rated power	10W
Light effect	Light frequency	breathing	Blinking interval	Adjustable	colour	Adjustable
Aroma diffuser	Continuous fogging	5 hours	Intermittent fogging	10 hours		
Manbo	working frequency	7.83Hz Schumann wave	Overall power	<24W	Storage size	256MB
Power supply	input	90Vac-264Vac	output	12V2A		
SIZE	Outer packaging	205x205x165mm	product	Bottom diameter 167 x high point 127 x low point 73		
Weight	Gross weight	1600g	Net weight	1238g		
Parts	AC adapter	1PCS	Storage bag	1PCS	User Manual	1copy

FCC Warning Statement
Changes or modifications not expressly approved by the party responsible for compliance could void the user's authority to operate the equipment. This equipment has been tested and found to comply with the limits for a Class B digital device, pursuant to Part 15 of the FCC Rules. These limits are designed to provide reasonable protection against harmful interference in a residential installation. This equipment generates uses and can radiate radio frequency energy and, if not installed and used in accordance with the instructions, may cause harmful interference to radio communications. However, there is no guarantee that interference will not occur in a particular installation. If this equipment does cause harmful interference to radio or television reception, which can be determined by turning the equipment off and on, the user is encouraged to try to correct the interference by one or more of the following measures:
- - Reorient or relocate the receiving antenna.
- - Increase the separation between the equipment and receiver.
- - Connect the equipment into an outlet on a circuit different from that to which the receiver is connected.
- - Consult the dealer or an experienced radio/TV technician for help.
FCC Radiation Exposure Statement
The antennas used for this transmitter must be installed to provide a separation distance of at least 20 cm from all persons and must not be co-located for operating in conjunction with any other antenna or transmitter.
This device complies with Part 15 of the FCC Rules. Operation is subject to the following two conditions:
(1) This device may not cause harmful interference, and
(2) This device must accept any interference received, including interference that may cause undesired operation.

