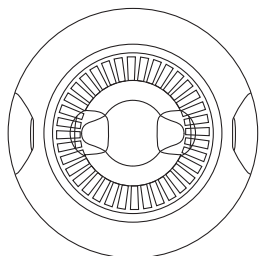


# TRT-TTQ-01

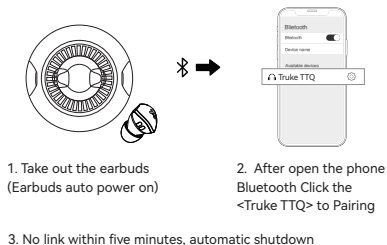
## TWS EARBUDS



## Instruction Manual

- Please read the instructions before use

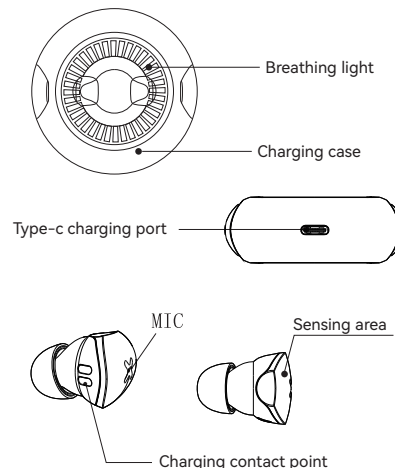
### Connect



### Reset

- If earbuds has any connection or function problems, please reset the earbuds
1. Delete the BT pairing information on the phone.
  2. Take the earbuds into the charging case to charge.
  3. Take out the earbuds and wait for 20 seconds.

### Product diagram



### Operation

- Power on: Remove the earbuds from the case.
- Power off: Put the earphones back to the case
- Connect the phone: After the earbuds taken out
- Open the phone Bluetooth and click the <Truke TTQ> to pairing
- Play/pause music: click once
- Previous song: click 3 times
- Next song: click 2 times
- Answer : click once
- Hang up: click 2 times
- Reject call: press and hold for 2 seconds
- Start Siri: press and hold for 2 seconds

### Feature

- Model: TRT-TTQ-01
- Working time: 4 hrs
- distance: 10M
- Music time: about 7 hrs (volume 80%)
- Earbuds capacity: 35mAh
- Charging time: Charging case: 2 hrs Earbuds 1.5 hrs
- Charging case capacity: 300mAh
- Charging voltage: 5V-1000mA
- Standby time: about 30 hrs

### Safety Instructions

1. Keep the product away from extremely hot and cold environments, it will damage the battery and circuit.
2. Avoid liquid immersion into the product.
3. Do not disassemble the product.
4. Do not use concentrated chemical products or detergents to clean the product.
5. Use only 5V/1A power supply. Connecting the power supply voltage too high may cause serious damage.
6. Do not randomly discard or place the product near fire or high temperature to avoid the danger of explosion.

### Product List

- TWS earbuds ..... X1
- Certificates ..... X1
- Type-C charging cable ..... X1

Brand Name: TRUKE

Address: Room 201, Building A, QianHai wan 1st Road,  
Qianhai Shenzhen Hong Kong Cooperation Zone,  
Shenzhen

Phone number : 4008 698 693

Website: <http://www.truke.cn/>

Made in China



**FCC Warning:**

This equipment has been tested and found to comply with the limits for a Class B digital device, pursuant to part 15 of the FCC Rules. These limits are designed to provide reasonable protection against harmful interference in a residential installation. This equipment generates, uses and can radiate radio frequency energy and, if not installed and used in accordance with the instructions, may cause harmful interference to radio communications. However, there is no guarantee that interference will not occur in a particular installation. If this equipment does cause harmful interference to radio or television reception, which can be determined by turning the equipment off and on, the user is encouraged to try to correct the interference by one or more of the following measures:

- Reorient or relocate the receiving antenna.
- Increase the separation between the equipment and receiver.
- Connect the equipment into an outlet on a circuit different from that to which the receiver is connected.
- Consult the dealer or an experienced radio/TV technician for help.

**Caution:** Any changes or modifications to this device not explicitly approved by manufacturer could void your authority to operate this equipment.

This device complies with part 15 of the FCC Rules. Operation is subject to the following two conditions:

(1) This device may not cause harmful interference, and (2) this device must accept any interference received, including interference that may cause undesired operation.

This equipment complies with FCC radiation exposure limits set forth for an uncontrolled environment. This equipment should be installed and operated with minimum distance 0cm between the radiator and your body.