

L1-White L1-Black

WIFI CAMERA

Quick Manual

Quick Operation Guide

Step 1 Download and install the App

Tips one: Scan the QR code below to download the "iCSee"App.



Tips two: Search "iCSee" in the App store and download.

Step 2 Turn on the power

Power on the camera, turn on the device, it will send "system starting up, wait be configured, Wait for the connection, please configure the network according to the Instructions" prompt after several seconds. If the camera does not have a prompt sound for a long time, you can press and hold the camera Reset button until you hear the prompt "Restore factory settings, please do not power off" and release it to restore the camera to factory settings and then configure the network.

Note:

If you need local storage, please install the memory card firstly, and then power on the device (the memory card does not support hot swapping, please plug and unplug the memory card when the device is powered off). Cloud storage is recommended, which is safe and convenient. Details See "Step 4" for operation.

Step 3 Configure the network of the camera

Bluetooth network configuration

Note: If the device supports Bluetooth network configuration, please configure it as follows.

- 1.Connect your phone to WiFi network and turn on Bluetooth.
- 2.Open the iCSee app, register an account and login(Figure 1).

Figure 1

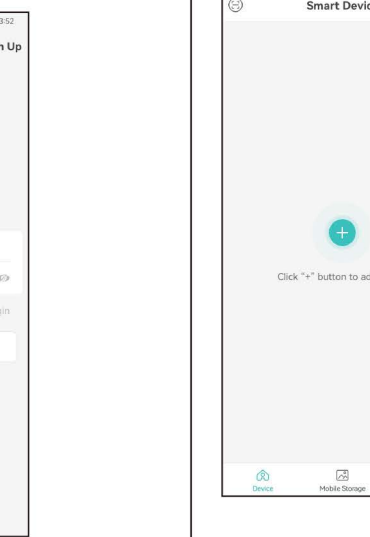


Figure 2

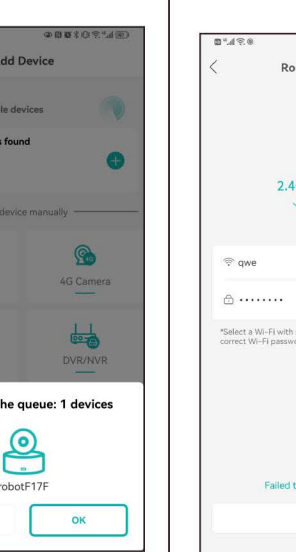


Figure 3

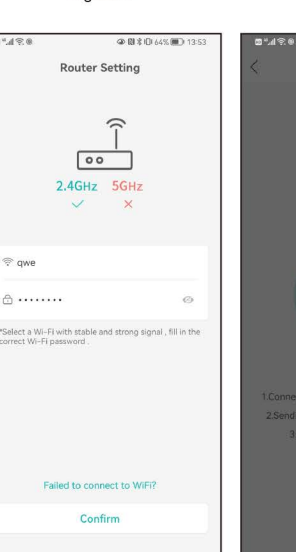


Figure 4

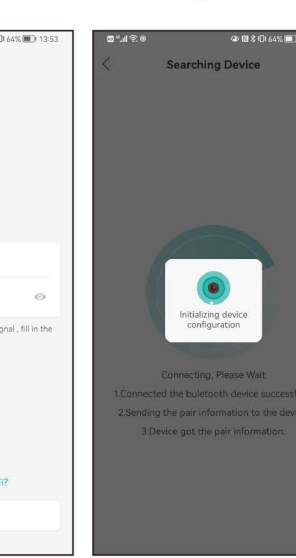


Figure 5

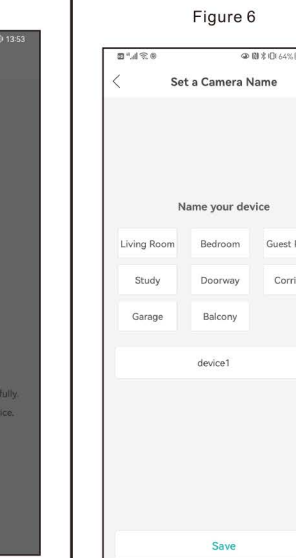


Figure 6

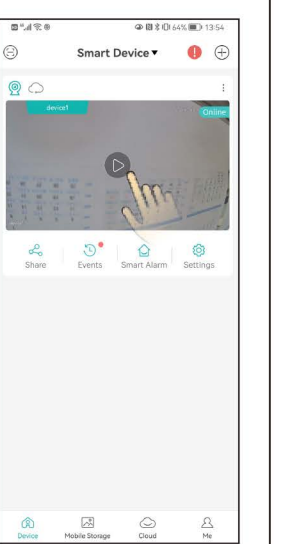


Figure 7

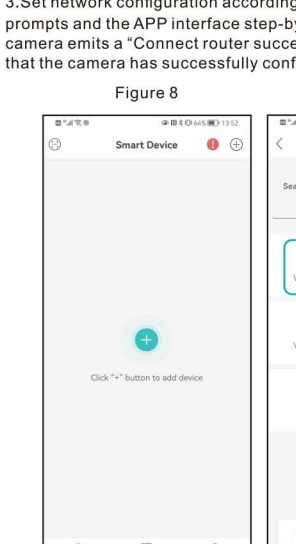


Figure 8

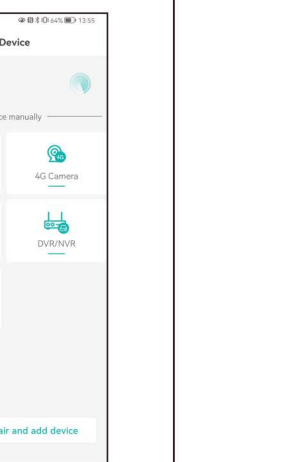


Figure 9

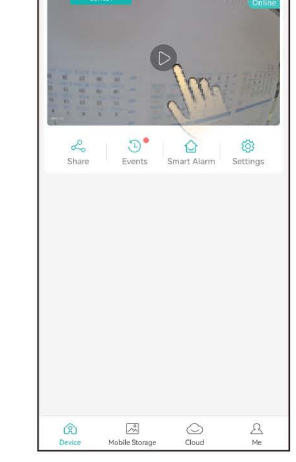


Figure 10

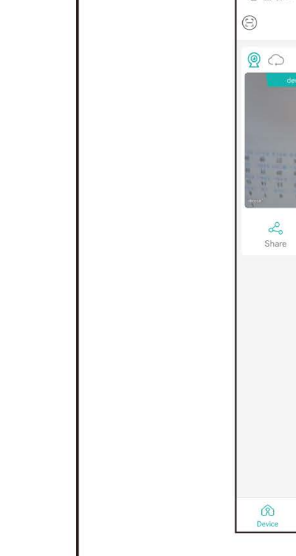
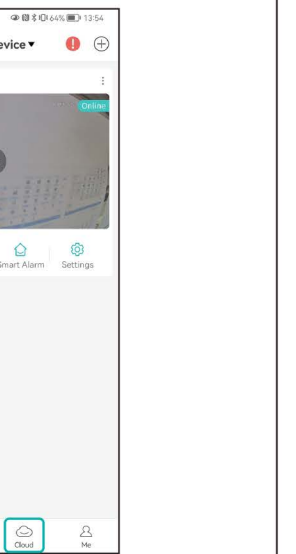


Figure 11



WiFi network configuration

Note: If the device does not support Bluetooth network configuration or Bluetooth network configuration fails, please configure it as follows.

- 1.Connect your phone to WiFi network .
- 2.Login to iCSee App, click "+" to add devices (Figure 8), and select "WiFi Camera" (Figure 9).
- 3.Set network configuration according to the camera's voice prompts and the APP interface step-by-step guide. When the camera emits a "Connect router successfully" prompt, it means that the camera has successfully configured the network.

Cloud Storage

Steps to open cloud storage: click the "cloud" icon in the device list interface (Figure 11), and follow the guidance of the app interface to understand and open the cloud storage package, with a variety of packages available.

FAQ

Q: How do cameras store video?

A: 1.Local TF card storage, maximum support up to 128G TF card after full automatically delete earlier video, overwrite video.
2.Cloud storage.

Q: How to do if the camera is not connected or offline?

A: 1.Check if the camera power or network of router normally .
2.Plug the camera power to restart camera.
3.Restore the camera to factory settings.

Q: Is 5g router supported ?

A : If you use 5g router, 5G and 2.4G use the same connection hotspot (that is, SSID is the same), you can connect directly. If 5G and 2.4G are not the same connection hotspot (that is, SSID is different, generally SSID of 2.4G is xxxx-2.4G, SSID of 5G is xxxx-5G), please connect WiFi of mobile phone to hotspot of xxxx-2.4G of router before configuring camera.

Notice

1. Please change the user password while using this product to avoid being misappropriated by criminals.
2. Do not install the device in a place that is damp, dusty, or accessible to children.
3. Please use and store within the allowable temperature and humidity range, and do not disassemble the equipment at will.

Directions

1. Please refer to the actual product, the manual is for reference only.
2. The APP and product firmware will be updated from time to time. You can upgrade to the latest firmware online by yourself without notice. The manual is for reference only.
3. The manual may contain technically inaccurate parts or parts that are inconsistent with product functions or printed errors. Please refer to our company's final interpretation..

FCC WARNING

This device complies with part 15 of the FCC Rules. Operation is subject to the following two conditions: (1) this device may not cause harmful interference, and (2) this device must accept any interference received, including interference that may cause undesired operation. Any changes or modifications not expressly approved by the party responsible for compliance could void the user's authority to operate the equipment.

IC Caution:

-English:
This device complies with Industry Canada licence-exempt RSS standard(s). Operation is subject to the following two conditions:
(1) This device may not cause interference, and
(2) This device must accept any interference, including interference that may cause undesired operation of the device.

To maintain compliance with RSS-102 RF Exposure guidelines, This equipment should be installed and operated with minimum 20cm distance between the radiator and your body: Use only the supplied antenna.

-French:
Le pr é sent appareil est conforme aux CNR d' Industrie Canada applicables aux appareils radio exempts de licence. L'exploitation est autorisée aux deux conditions suivantes:
(1) l'appareil ne doit pas produire de brouillage, et
(2) l'utilisateur de l'appareil doit accepter tout brouillage radio électrique subi, même si le brouillage est susceptible d'en compromettre le fonctionnement.

Pour être conforme aux lignes directrices d' exposition RF RSS-102, cet é quipement doit é tre install é et exploit é à une distance minimale de 20cm entre le radiateur et votre corps: n' utilisez que l' antenne fournie.