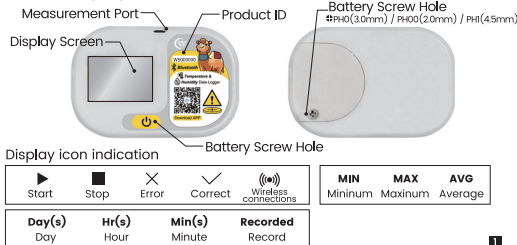


# Bluetooth Temperature & Humidity Data Logger



## Product display



1

## Operating Instructions

**1. Download APP**  
Scan the QR code to download the mobile app and follow the instructions to connect.



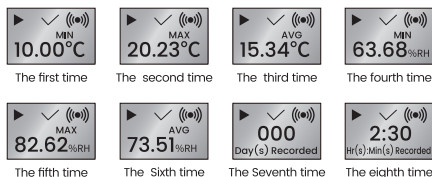
Scan the QR code to download the APP

**2. Power On**  
①. Press and hold the power button for 5 seconds to turn on the device.  
②. After powering on, double tap to record the Mark point information, and the screen will flash for 5 seconds.



2

③. After power on, a single press of the power button will cause the data on the display to automatically cycle every 2 seconds in the following order: minimum temperature, maximum temperature, average temperature, minimum humidity, maximum humidity, average humidity, total days recorded, and recording time. After 5 seconds, it will return to the default screen.



Note: (display 000 when the number of days is less than one day)

3

## 3. Configure Parameters

①. Upon powering on, Bluetooth broadcasting is enabled. Open the app, select the device, and choose "Add Device." Search for and select the corresponding Product ID in the app, then click "Connect."  
②. If the device is being used for the first time, fill in the configuration parameters in the app and confirm the settings.



## 4. Read Report

Open the corresponding device interface in the app, select "Read Data," and after reading is complete, choose "All Data." To view specific data by time, you can search within the app. If you need to export the report, select "Export PDF" on the "All Data" page to view, download, or share the complete data report.



4

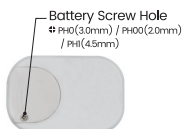
## 5. Power Off

Press and hold the button for 5 seconds to turn off the device and stop recording.



## 6. Battery Replacement

①. The compatible battery model is CR2032, 3V.  
②. Use a Phillips screwdriver PH0 (3.0mm) / PH00 (2.0mm) / PH1 (4.5mm) to open the battery case.  
③. Before replacing the battery, ensure that you export the data report.  
- If no configuration changes are needed, after replacing the battery, turn on the device and search for the device in the app to connect and continue using it. The configuration will default to the previous settings.  
- If configuration changes are needed, after replacing the battery and turning on the device, please export the data report first, then reset the configuration.



5

## 7. Data Limit

The data logger's report export limit is 32,000 data. After exceeding 32,000 data, the report will automatically overwrite previous data, so please ensure timely export of the report.



Timely export of the report.

## Operation and status description

1. Short press without powering on.



6

2. Short press without powering on after configuration.



3. Press and hold for 5 seconds to power on if there is a delay.



4. Press and hold for 5 seconds to power on without delay.



5. Press and hold for 5 seconds to power off.



7

## Technical Specifications

Temperature (Humidity) Range	-30°C to 70°C / 0-100% RH
Temperature (Humidity) Accuracy	Temperature Version: ±0.5°C (typical) Temperature and Humidity Version: ±0.3°C / ±3% RH (typical)
Resolution	0.1°C / 1% RH
Data Recording Capacity	32,000 data (Data will automatically overwrite when full; original data needs to be saved after replacing the battery)
Display	LCD displaying alarm status and data statistics (max, min, avg)
Battery	3V button battery (CR2032)
Recording Interval	1-255 minutes, configurable; factory default collection time is 5 minutes.
Communication Method	Bluetooth (mobile app)
Start Method	Manual button
Stop Method	Manual button; recording also stops when the battery is depleted. Recording will resume after replacing the battery.

8

## Configuration parameter description

Sampling Interval	The time interval at which the device collects and records a set of data.
Collection Delay	The waiting time from when the device is powered on to when it starts saving data.
Temperature Alarm Upper (Lower) Limit	Triggers a temperature alarm when the set temperature is exceeded.
Humidity Alarm Upper (Lower) Limit	Triggers a humidity alarm when the set humidity is exceeded.
Alarm Type	The device logs a single timing event for continuous temperature exceedances.
Start Method	Button-activated start.
Report Language	The language in which the report is presented.
Alarm Delay	The delay time before the alarm is triggered after the temperature exceeds the set limit.

9

## Warning

This product contains a button battery. Please keep it away from children and fire.

### WARNING

- INGESTION HAZARD:** This product contains a button cell or coin battery.
- DEATH** or serious injury can occur if ingested.
- A swallowed button cell or coin battery can cause Internal Chemical Burns in as little as 2 hours.**
- KEEP** new and used batteries **OUT OF REACH OF CHILDREN**
- Seek immediate medical attention** if a battery is suspected to be swallowed or inserted inside any part of the body.



10

## FCC Warning Statement

Changes or modifications not expressly approved by the party responsible for compliance could void the user's authority to operate the equipment. This equipment has been tested and found to comply with the limits for a Class B digital device, pursuant to Part 15 of the FCC Rules. These limits are designed to provide reasonable protection against harmful interference in a residential installation. This equipment generates uses and can radiate radio frequency energy and, if not installed and used in accordance with the instructions, may cause harmful interference to radio communications. However, there is no guarantee that interference will not occur in a particular installation. If this equipment does cause harmful interference to radio or television reception, which can be determined by turning the equipment off and on, the user is encouraged to try to correct the interference by one or more of the following measures:

- Reorient or relocate the receiving antenna.
- Increase the separation between the equipment and receiver.
- Connect the equipment into an outlet on a circuit different from that to which the receiver is connected.
- Consult the dealer or an experienced radio/TV technician for help.

This device complies with part 15 of the FCC Rules. Operation is subject to the following two conditions: (1) This device may not cause harmful interference, and (2) this device must accept any interference received, including interference that may cause undesired operation.

The device has been evaluated to meet general RF exposure requirement. The device can be used in portable exposure condition without restriction.

10



Wisesorbent  
Technology

WISESORBENT TECHNOLOGY LLC

ADD: 11 E Stow Rd, Marlton, NJ 08053, USA

TEL: +1-800-272-5238

EMAIL: info@wisesorbent.com

WEBSITE: www.wisesorbent.com