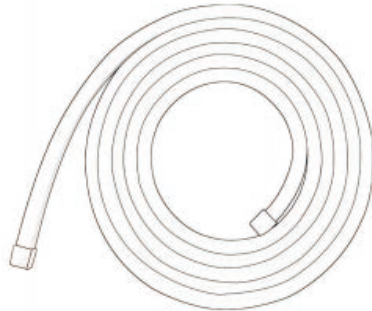


English

## USER MANUAL



-1-

## App User Manual

English

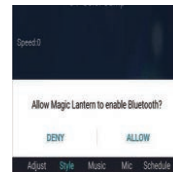
iOS and Android systems users can download the APP by scanning the QR code. Open the browser or other tools with "scan QR code" function, scan the QR code as below:

APP download  
Scan QR code



### APP operation

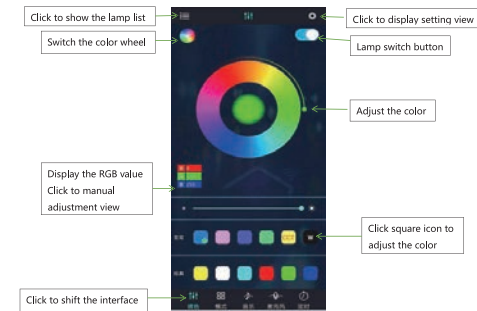
Click on the Magic Lantern icon, enter the APP page. After enter the APP interface, if the bluetooth is not enabled, the APP will ask you "Allow Magic Lantern to enable Bluetooth?", please click "Allow".



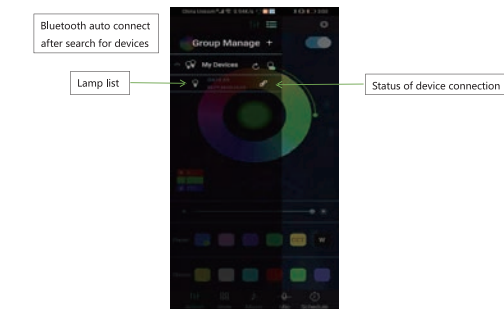
-2-

English

(1) switch to color and brightness interface:

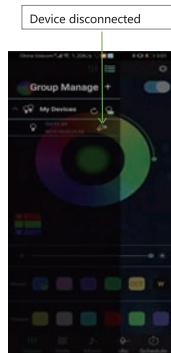


(2) click to show the lamp list, view lamp list:



-3-

English



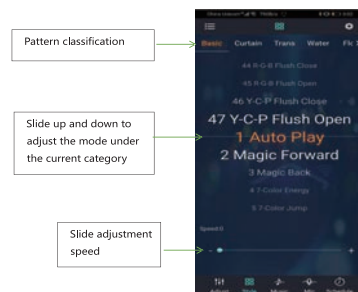
(3) Click to RGB manual adjustment view:



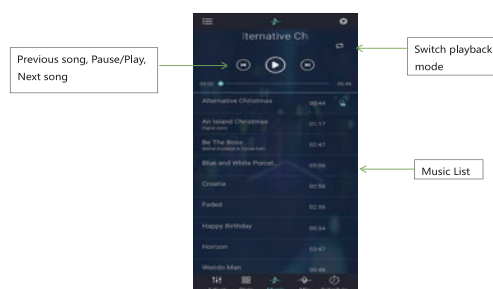
-4-

English

(4) switch to the mode interface:



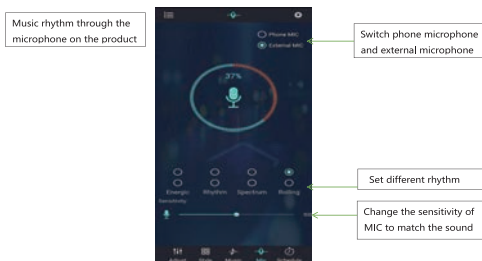
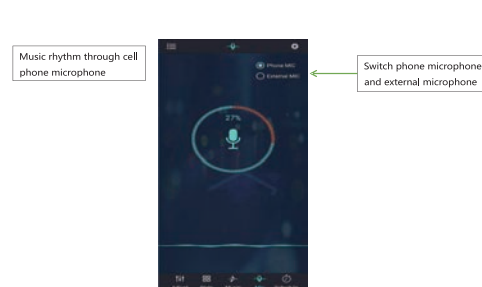
(5) switch to the music rhythm interface:



-5-

English

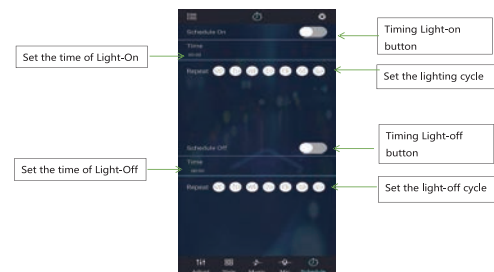
(6) Switch to the microphone rhythm interface:



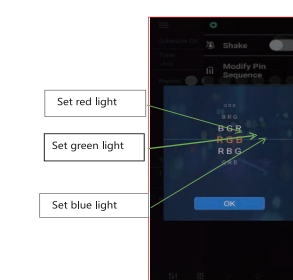
-6-

English

(7) Switch to the timing interface:



(8) Switch to the modify pin sequence interface:



-7-

## Attentions

English

The remote control must be aligned to the infrared receiver of the controller.  
The led strip must be connected correctly based on installation guide.



### CAUTION:

1. For indoor use only, risk of electric shock.
2. Children under the age of 16 should use this product under adult supervision.



-8-

<p>FCC Statement</p> <p>This equipment has been tested and found to comply with the limits for a Class B digital device, pursuant to part 15 of the FCC Rules. These limits are designed to provide reasonable protection against harmful interference in a residential installation. This equipment generates, uses and can radiate radio frequency energy and, if not installed and used in accordance with the instructions, may cause harmful interference to radio communications. However, there is no guarantee that interference will not occur in a particular installation. If this equipment does cause harmful interference to radio or television reception, which can be determined by turning the equipment off and on, the user is encouraged to try to correct the interference by one or more of the following measures:</p> <ul style="list-style-type: none"><li>—Reorient or relocate the receiving antenna.</li><li>—Increase the separation between the equipment and receiver.</li><li>—Connect the equipment into an outlet on a circuit different from that to which the receiver is connected.</li><li>—Consult the dealer or an experienced radio/ TV technician for help.</li></ul> <p>9</p>	<p>This device complies with part 15 of the FCC Rules. Operation is subject to the following two conditions: (1) This device may not cause harmful interference, and (2) this device must accept any interference received, including interference that may cause undesired operation.</p> <p>Caution</p> <p>Any changes or modifications not expressly approved by the party responsible for compliance could void the user's authority to operate the equipment.</p> <p>FCC Radiation Exposure Statement</p> <p>This equipment must be installed and operated in accordance with provided instructions and the antenna(s) used for this transmitter must be installed to provide a separation distance of at least 20 cm from all persons and must not be co-located or operating in conjunction with any other antenna or transmitter. End-users and installers must be provide with antenna installation instructions and transmitter operating conditions for satisfying RF exposure com</p> <p>10</p>		