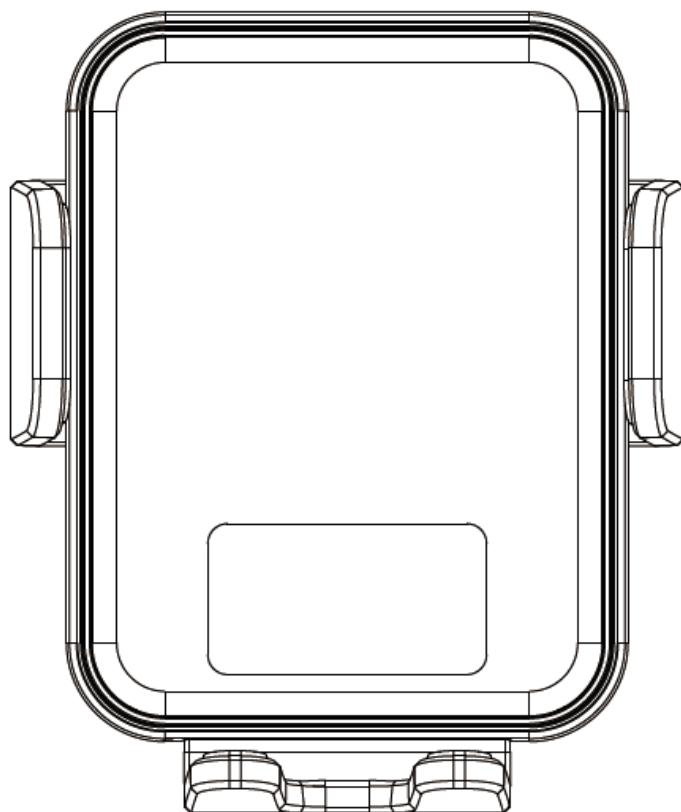


Car Wireless Charger



Instruction Manual

1.Car Wireless Charger Manual

Product Name: Car stand wireless charger

(Intelligent sensing)

Power: 15W, 10W, 7.5W, 5W

Effective transmission distance: 0-6mm

Size: Middle disk diameter:

82*68*70MM

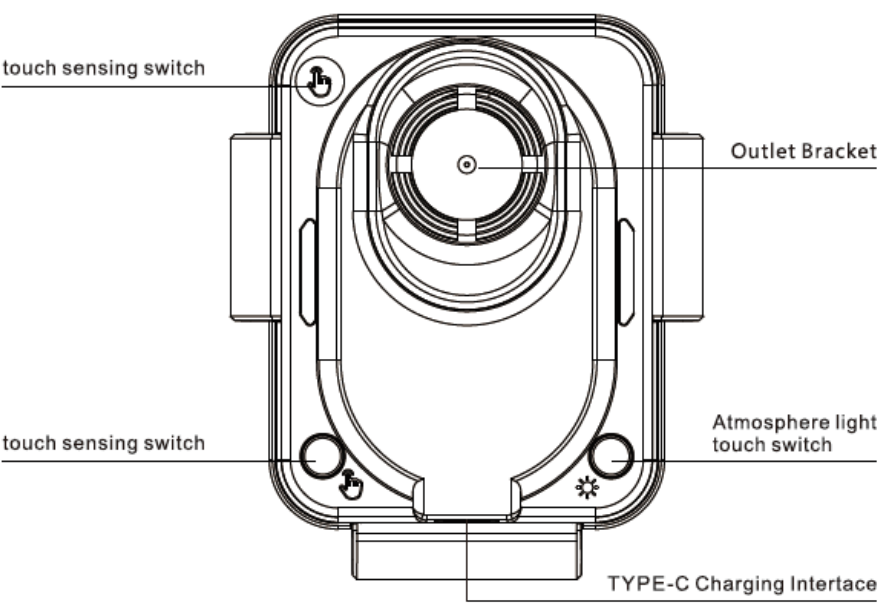
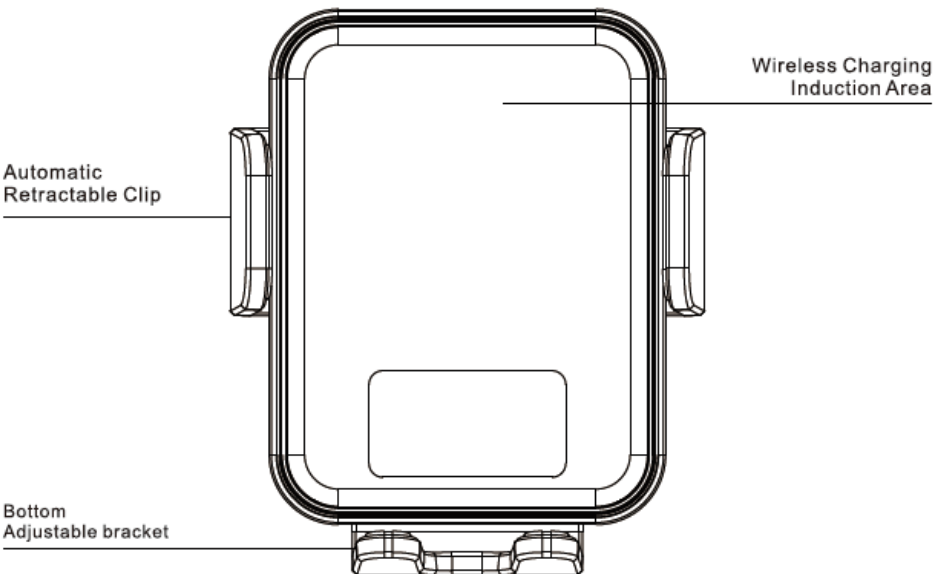
Charging interface: USB TYPE-C

Packing list:

Car bracket x 1, Manual X1,

Data line×1, Car outlet base(clip)×1

2.Functional components



3. Specifications

1. Weight: product net weight about 105g
2. Material: ABS+PC
3. Input voltage/current: 5V/2A, 9V/1.67A
4. Input voltage of magnetic head: DC 5V/2A
5. Output power: 15W, 10W, 7.5W, 5W automatic identification
6. Charging frequency: 115K-205KHz
7. Charging distance: 0-6mm
8. Support Specifications: Qualified with Qi Wireless Protocol Charging
9. Support QC wireless fast charging equipment such as: iPhone 15 Series, iPhone 14 Series, iPhone 13 Series, iPhone 12 Series, iPhone 11 Series, iPhone XS Max, iPhone XR, iPhone X, iPhone 8, iPhone 8X, HUAWEI Mate 60 Series, Mate 50 Series, Mate 40 Series, Mate 30 Series, Mate 20 Series, P50 Pro, P40 Pro, P30 Pro, V40 Series, V30 Series, SAMSUNG GALAXY Series, S8-S20 Series, Note8-10 Series.
10. For devices that do not support wireless charging, you can use the corresponding magnetic head according to the charging interface of the device before you can use it; or you can purchase a wireless receiver that meets the Qi standard to charge.

4. Instructions For Use

1. Connect the car wireless charging device to the compatible data cable during use.
2. Connect the USB end of the data cable to the rechargeable interface on the car.(e.g. cigarette lighter conversion charger and car USB charging interface)
3. The device clamp can be used to clamp the air conditioning outlet end, or placed in other places that can be clamped.
4. After the device is powered on with a 5-9V DC power supply, it will automatically check the opening and closing once. The blue indicator light will light up, and the touch sensor will open both arms. After inserting the phone, the device will automatically clamp the phone. At this point, wireless charging will automatically charge the phone, and the green light will light up during charging (for phones with wireless charging function). To remove the phone, you need to touch the two sensing positions on the back. When your hand touches this sensing point, the device will automatically open its arms and remove the phone.
5. This device has overvoltage protection, over temperature protection, magnetic field protection, and short circuit protection. If there is an abnormality in the device, it will automatically stop working.


5. Precautions

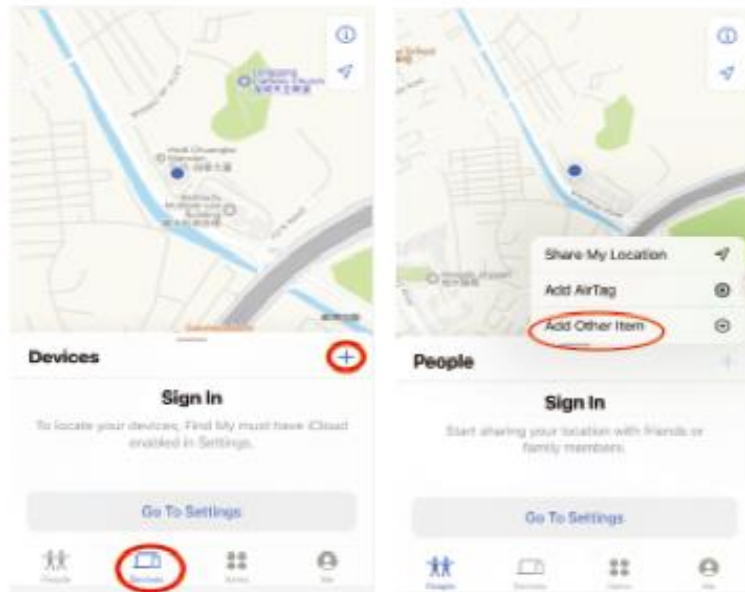
1. Do not over-squeeze or hit the device
2. Do not use the wireless charger under severe high temperature, humidity or corrosive environment to avoid damaging the device's circuit



Thank you for using this product!

Set up and use Find My

1. Search Find My  on the apple device, Click to enter.

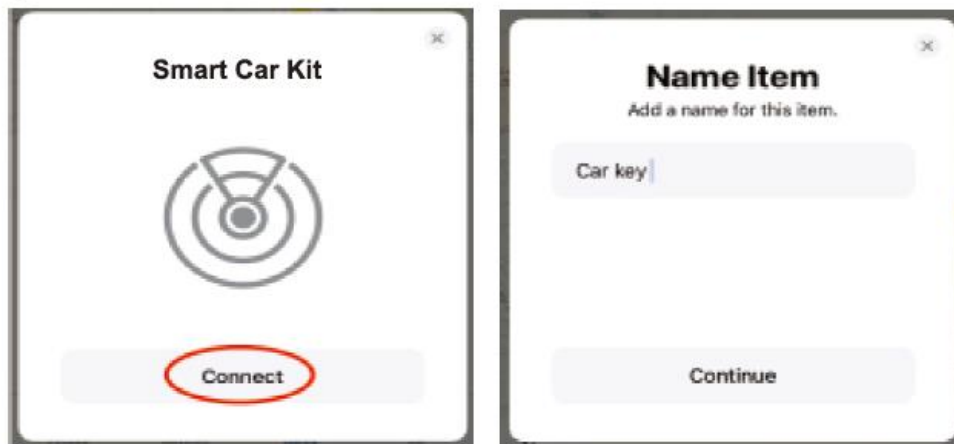


2. Tap Devices, Tap Add, Tap add other item.

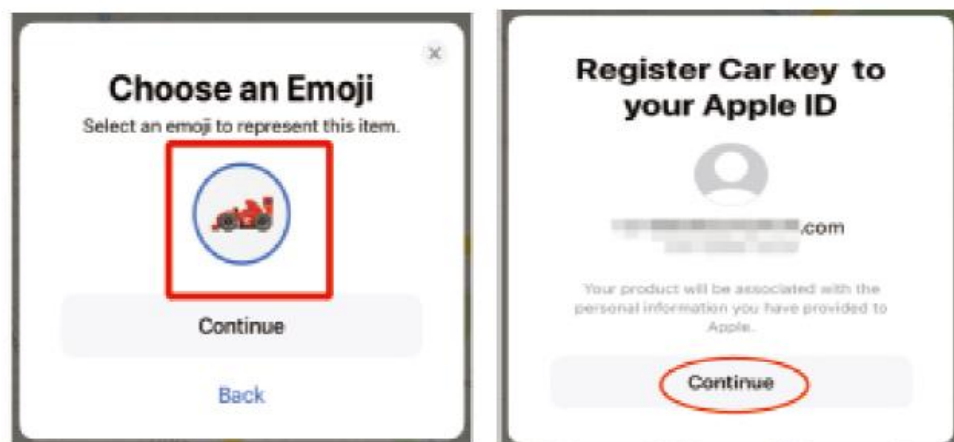
Make sure that your device is on and ready for setup.



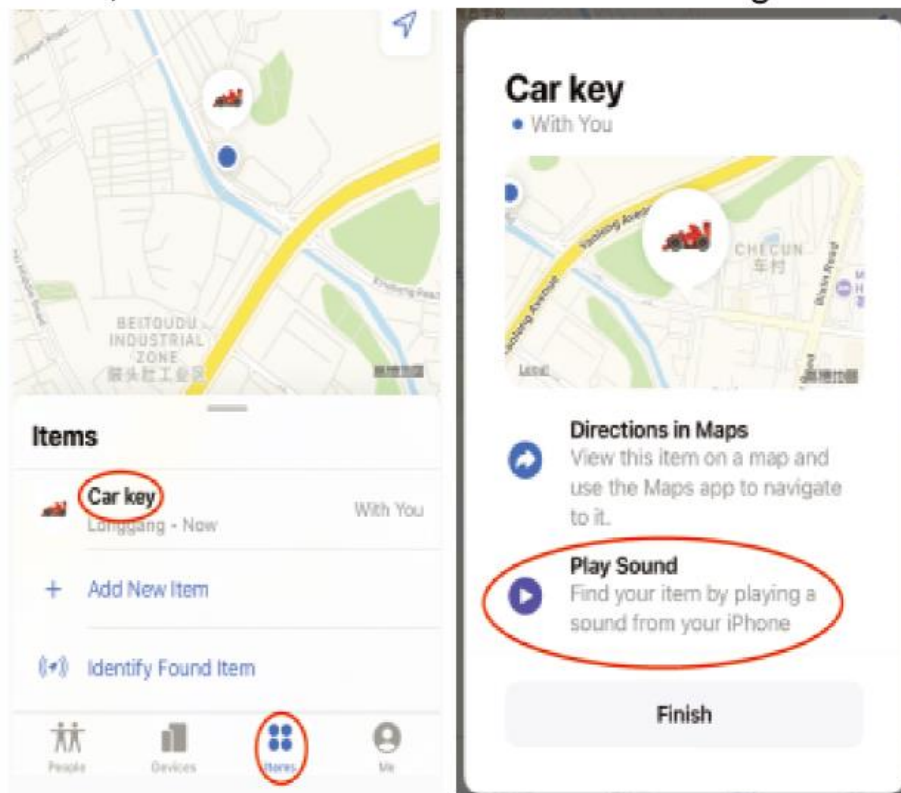
3. When find out the device **Smart Car Kit** , tap **Connect**, name it and register it to your Apple ID



4. Choose an emoji. Then tap Continue. Register your **KEY** to your Apple ID, tap Continue again. Tap Done.



5. Find the device and tap to enter, tap Play Sound, When hear the OBD sounds a slight noise of DiDiDi, That shows the device is working now.



Note: When need to remove the device, please keep the device connecting with the Apple device, tap Play Sound can hear the slight noise of Di Di Di, then can make Remove.

How to force restart device:
Keep the power supply On/Off for 6 times.
The sixth time will hear different continuously sound, then the device has been restart successfully.

FCC warning statements:

This equipment has been tested and found to comply with the limits for a Class B digital device, pursuant to part 15 of the FCC Rules. These limits are designed to provide reasonable protection against harmful interference in a residential installation. This equipment generates, uses and can radiate radio frequency energy and, if not installed and used in accordance with the instructions, may cause harmful interference to radio communications. However, there is no guarantee that interference will not occur in a particular installation. If this equipment does cause harmful interference to radio or television reception, which can be determined by turning the equipment off and on, the user is encouraged to try to correct the interference by one or more of the following measures:

- Reorient or relocate the receiving antenna.
- Increase the separation between the equipment and receiver.
- Connect the equipment into an outlet on a circuit different from that to which the receiver is connected.
- Consult the dealer or an experienced radio/TV technician for help.

Caution: Any changes or modifications to this device not explicitly approved by manufacturer could void your authority to operate this equipment.

This device complies with part 15 of the FCC Rules. Operation is subject to the following two conditions: (1) This device may not cause harmful interference, and (2) this device must accept any interference received, including interference that may cause undesired operation.

The device has been evaluated to meet general RF exposure requirement This equipment complies with FCC radiation exposure limits set forth for an uncontrolled environment.

This equipment should be installed and operated with minimum distance 20cm between the radiator & your body.