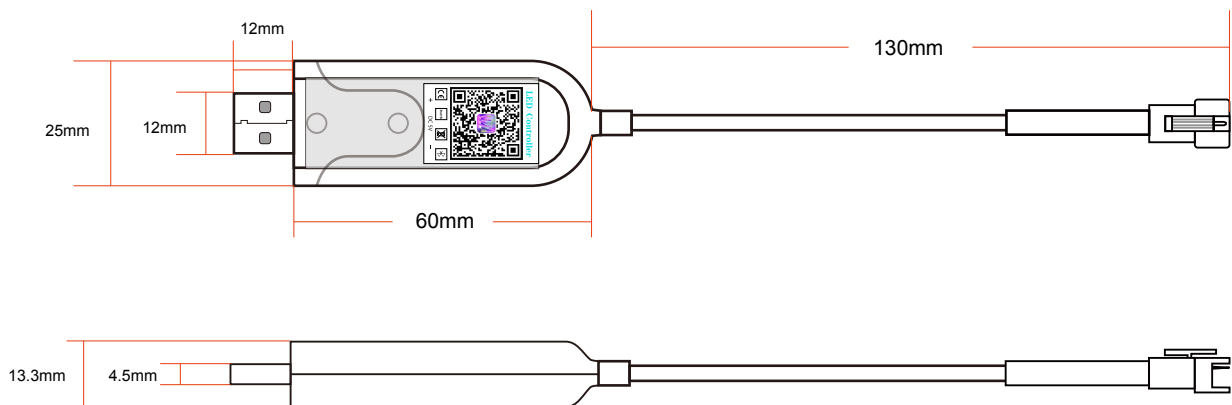


深圳市韦艾氏电子有限公司

Shenzhen VSS Winline Electronics Co. , Ltd

1.Product specification



2.Product parameter

Voltage:	DC5V	Product weight:	14.3g
Connection mode:	Bluetooth	Control color:	Colorful
Control mode:	Button /APP	Product size:	202mm x 60mm x13.3mm

3. Product function description

- Support 5V USB power supply, maximum output power 3~5W
- Support a variety of modes such as steady on/running/fading/flashing/wave forward
- Support speed regulation
- Support key /APP control
- Supports synchronization of multiple lights
- Supports phantom mode
- Support brightness adjustment
- Supports timing switch/turn off indicator
- Supports group control
- Support music rhythm

深圳市韦艾氏电子有限公司

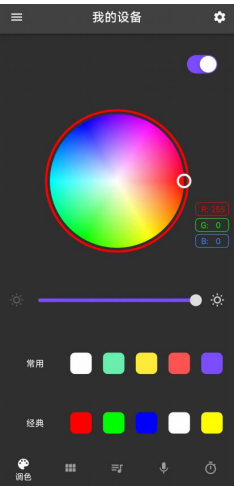
Shenzhen VSS Winline Electronics Co. , Ltd

4. APP usage instructions

4.1 APP Download



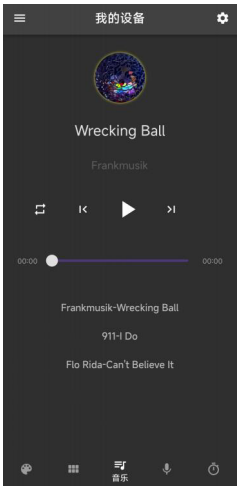
4.2 APP Interface



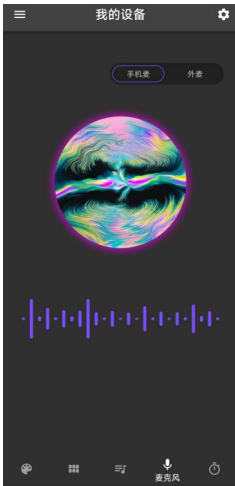
Toning interface



Pattern interface



Music interface



Microphone interface



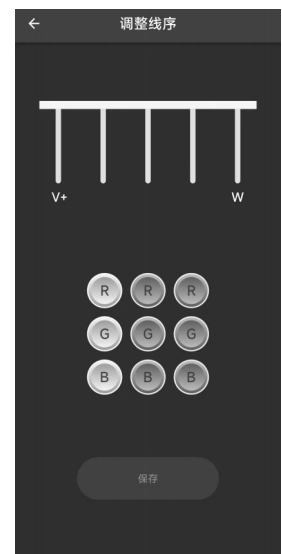
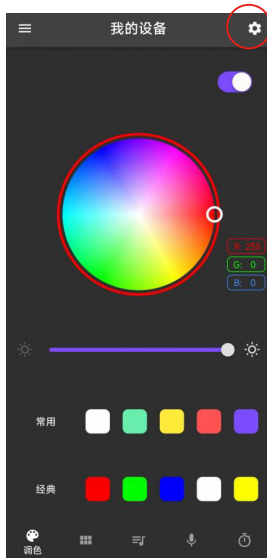
Timing interface

深圳市韦艾氏电子有限公司

Shenzhen VSS Winline Electronics Co. , Ltd

4.3 Adjusting the Sequence

RGB line sequence setting: Observe the front three groups of colors of the light strip, according to the signal from front to back is red, green and blue is the correct RGB order, if the light strip color and controller RGB line sequence setting: Observe the front three groups of colors, according to the signal from front to back is red, green and blue is the correct RGB order, if the light strip color and controller sequence is green-blue-red, Then select G-B-R for each column and save it to display the normal RGB order.



5. Design and use precautions

· Power source

1. The input voltage of the controller is 4.8V-5V, the maximum peak voltage cannot exceed 5.5V, and the ripple is less than 150mV. Otherwise, the chip may be burned, resulting in the controller not working or damaged.
2. The maximum output load of the public reference circuit is 3W, ensuring that the 5V USB power supply or solar panel power supply is sufficient to avoid system abnormalities due to insufficient power supply.
3. If you need to change the load size, please contact us to change the software or hardware circuit.

· Working environment

Standard: -20°C - $+85^{\circ}\text{C}$ Above this standard the chip may be damaged or lose function.

FCC Caution:

This device complies with part 15 of the FCC Rules. Operation is subject to the following two conditions: (1) This device may not cause harmful interference, and (2) this device must accept any interference received, including interference that may cause undesired operation.

Any Changes or modifications not expressly approved by the party responsible for compliance could void the user's authority to operate the equipment.

Note: This equipment has been tested and found to comply with the limits for a Class B digital device, pursuant to part 15 of the FCC Rules. These limits are designed to provide reasonable protection against harmful interference in a residential installation. This equipment generates uses and can radiate radio frequency energy and, if not installed and used in accordance with the instructions, may cause harmful interference to radio communications. However, there is no guarantee that interference will not occur in a particular installation. If this equipment does cause harmful interference to radio or television reception, which can be determined by turning the equipment off and on, the user is encouraged to try to correct the interference by one or more of the following measures:

- Reorient or relocate the receiving antenna.
- Increase the separation between the equipment and receiver.
- Connect the equipment into an outlet on a circuit different from that to which the receiver is connected.
- Consult the dealer or an experienced radio/TV technician for help.

The device has been evaluated to meet general RF exposure requirement. The device can be used exposure condition without restriction.