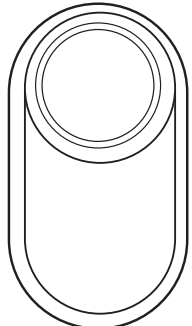


60mm

Smart Tag



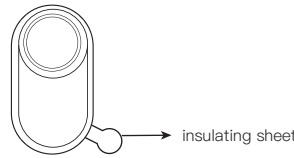
80mm

Specification	
Model	Locasync
Size	28.9*52.7*8mm/1.13*2.07*0.31inch
Weight	12.6g / 0.44oz
Power	3.0V CR2032-230mAh
Voltage	DC 3V
Current	<5uA(Standby) / <10mA(Max)
Wireless	BLE 5.2
Wireless range	≥40m open area
Buzzer	Built-in ≥75db (in 10cm)
Temperature range	-10° ~ +50°C
Humidity range	<95% (Non-condensing)

Quick instructions

1. Turn on the device and pair

•Unplug the insulation and start the machine. It should have a bell to indicate that it's powered on



2. Pair the device

- Open the Find My app.
- Hold the device close to your iPhone, iPad, tap the Items tab, tap + and then Add Other Item.
- Tap Connect.
- Type a name for your device, select an emoji.
- Tap Agree to acknowledge that this item will be linked to your Apple ID.
- Tap Finish.

3. Enable Lost Mode

- Open the Find My app, tap the Items tab, then tap your item.
- Under Lost Mode, tap Enable.
- Read the instructions, tap Continue and enter a phone number or email address.
- Confirm the information, customize the lost message, and tap Activate to complete the setup.

4. Remove the device

- Open the Find My app, tap the Items tab, then tap your item.
- Tap Remove Item and then tap Remove to complete the operation.

Note: After removing the device in the app, if you want to pair it, you can open the Find My app and do it in 10 minutes. If there is no re-pairing within 10 minutes, the device will leave the pairing state, and the device and app cannot be paired at this time. If you need to pair the device, you need to press the device button for 3 seconds and the device will beep. At this point, the device enters the pairing state and can be re-paired with the app.

Main Functions

1. Locate your item

If your missing item isn't nearby, the Find My app can still help you track it down using the Find My network – hundreds of millions of iPhone, iPad, and Mac devices around the world. Nearby devices securely send the location of your missing device to iCloud, then you can see where it is in the Find My app. It's all anonymous and encrypted to protect everyone's privacy.

2. Play Sound

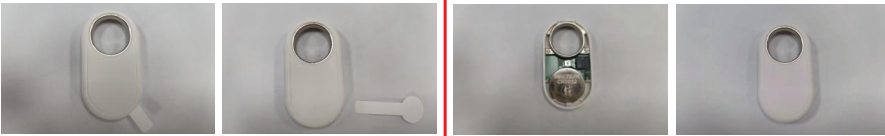
- Open the Find My app, tap the Items tab, then tap your item.
- Click Play Sound, and the device will beep, so you can find the item easily.

Instructions for device button

1. Pairing state

After installing the battery, long press the button for 3 seconds, the device will beep, and the device will enter the pairing state.

How to replace the battery ?



How to connect products ?



–Increase the separation between the equipment and receiver.
–Connect the equipment into an outlet on a circuit different from that to which the receiver is connected.
–Consult the dealer or an experienced radio/TV technician for help.

Caution Changes or modifications not expressly approved by the party responsible for compliance could void the user's authority to operate the equipment.

FCC RF Exposure Information (SAR)

This device is designed and manufactured not to exceed the emission limits for exposure to radio frequency (RF) energy set by the Federal Communications Commission of the United States.
During SAR testing, this device is set to transmit at its highest certified power level in all tested frequency bands, and placed in positions that

This device is designed and manufactured not to exceed the emission limits for exposure to radio frequency (RF) energy set by the Federal Communications Commission of the United States.
During SAR testing, this device is set to transmit at its highest certified power level in all tested frequency bands, and placed in positions that

The FCC has granted an Equipment Authorization for this model device with all reported SAR levels evaluated as in compliance with the FCC RF exposure guidelines. This equipment should be installed and operated with minimum distance 5mm from your body.
While there may be differences between the SAR levels of various devices and at various positions, they all meet the government requirement.

Declaration Of ConformityEuropean Notice

Hereby, Ningbo Lingthu Technology CO.,Ltd. declares that this product is in compliance with essential requirements and other relevant provisions of Directive 2014/53/EU , 2011/65/EU.

This product must not be disposed of as normal householdwaste, in accordance with EU directive for waste electrical and electronic equipment(WEEE-2012/19/EU) . Instead , it should be disposed of by returning it to the point of sale , or to a municipal recycling collection point.

Made in China
Manufacturer: ShenZhen RiShengHua Technology Co., Ltd.
Address: 2/F, Building E1 , Giangongting Industrial area, Zhoushi Road No. 723 , XiXiang,BaoAn, ShenZhen, China.

Legal notice

Use of the Works with Apple badge means that a product has been designed to work specifically with the technology identified in the badge and has been certified by the product manufacturer to meet Apple Find My network product specifications and requirements. Apple is not responsible for the operation of this device or use of this product or its compliance with safety and regulatory standards.

Credit line

Apple, Apple Find My, Apple Watch, Find My, iPhone, iPad, iPadOS, Mac, macOS and watchOS are trademarks of Apple Inc. iOS is a trademark or registered trademark of Cisco in the U.S. and other countries and is used under license.

Compatibility statement

To use the Apple Find My app to locate this item, the latest version of iOS, iPadOS, or macOS is recommended.



Regulatory Safety Information

WARNING: KEEP BATTERIES OUT OF REACH OF CHILDREN
Swallowing may lead to serious injury in as little as 2 hours or death, due to chemical burns and potential perforation of the esophagus. If you suspect your child has swallowed or inserted a button battery immediately call the 24-hour Poison Information Centre for fast expert advice.

Rated voltage 3V
Rated current ~175 mAh

KEEP BATTERIES OUT OF REACH OF CHILDREN

- Keep in original package until ready to use
- Call a local poison control center for treatment information.
- Do not use if the compartment is not secure.
- Dispose of used button batteries promptly and safely. Flat batteries can still be dangerous.
- Risk of fire and burns.
- Do not recharge, disassemble, heat (–20°C +70°C)or incinerate.

Safety Statement

Article 12
Without permission, any company, firm or user shall not alter the frequency, increase the power, or change the characteristics and functions of the original design of the certified lower power frequency electric machinery.
Article 14
The application of low power frequency electric machinery shall not affect the navigation safety nor interfere a legal communication, if an interference is found, the service will be suspended until improvement is made and the interference no longer exists. The foregoing legal communication refers to the wireless telecommunication operated according to the telecommunications laws and regulations.

The low power frequency electric machinery should be able to tolerate the interference of the electric wave radiation electric machinery and equipment for legal communications or industrial and scientific applications.

WARNING:

CAUTION: Do not ingest battery, Chemical Burn Hazard.This product contains a coin / button cell battery, if the coin / button cell battery is swallowed, it can cause severe internal burns in just 2 hours and can lead to death.Keep new and used batteries away from children.If the battery compartment does not close securely, stop using the product and keep it away from children.If you think batteries might have been swallowed or placed inside any part of the body, seek immediate medical attention. Risk of explosion if the battery is replaced by an incorrect type.

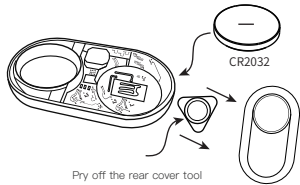
FCC Regulations:

This device complies with part 15 of the FCC Rules. Operation is subject to the following two conditions: (1) This device may not cause harmful interference, and (2) this device must accept any interference received, including interference that may cause undesired operation.
This device has been tested and found to comply with the limits for a Class B digital device, pursuant to Part 15 of the FCC Rules. These limits are designed to provide reasonable protection against harmful interference in a residential installation. This equipment generates, uses and can radiated radio frequency energy and, if not installed and used in accordance with the instructions, may cause harmful interference to radio communications. However, there is no guarantee that interference will not occur in a particular installation. If this equipment does cause harmful interference to radio or television reception, which can be determined by turning the equipment off and on, the user is encouraged to try to correct the interference by one or more of the following measures:
–Reorient or relocate the receiving antenna.

Can't connect? Troubleshooting

- 1.In Findmy, you can only add other items You cannot choose to add AirTag.
2. Check whether the insulating sheet has been pulled out.
3. The equipment pulls out the insulating sheet for the first time and enters the distribution network state for three minutes. During this period, there will be no sound feedback from the single button. Double-click the button and it will shut down with a click. At this time, you need to restore the factory settings if you want to enter the distribution network state again.
4. Restore the factory settings: press the fast button four times, and then press and hold it for the fifth time until the device automatically enters the distribution network state when the beep is heard.
5. Update mobile network, such as switching between WIFI and cellular network.
6. Determine whether to remove the equipment.
7. Restart the phone and try again

Warm tip: If you need to return and refund, please be sure to remove the device before returning it to avoid your privacy disclosure



Pry off the rear cover tool

5. What is the Find My network? And how does it work?

The Apple Find My network provides an easy, secure way to locate compatible personal items on a map using the Find My app on your iPhone, iPad, Mac, or the Find Items app on Apple Watch. Simply pair your compatible product with the Apple Find My app to view it right alongside your Apple devices. If your item ever goes missing, you can put it in Lost Mode to display a message and contact information to anyone who might find it. The Find My network is encrypted and anonymous, so no one else, not even Apple, can view its location.

Important tips:

When pairing a device with Find My app, the phone will link to the Apple server. Pairing may fail because of network problems. The following actions are recommended:
•Change the phone's network, such as switching between WIFI and mobile network;
•Factory Reset for the device.
•Re-pairing with Find My app.

2.How is the device designed to discourage unwanted tracking?

If any Find My network accessory separated from its owner is seen moving with you over time, you'll be notified in one of two ways:

- If you have an iPhone, iPad, Find My will send a notification to your Apple device. This feature is available on iOS or iPadOS 14.5 or later.
- If you don't have an iOS device or a smart phone, a Find My network accessory that isn't with its owner for a period of time will emit a sound when it's moved. These features were created specially to discourage people from trying to track you without your knowledge.

3.How is my privacy protected?

Only you can see where your item is. Your location data and history are never stored on the item itself. Devices that relay the location of your item also stay anonymous, and that location data is encrypted every step of the way. So not even Apple knows the location of your device or the identity of the device that helps find it.

4. How to replace the battery:

- It is necessary to gently pry off the upper cover with the warping blade in the product accessories to take out the battery.
- The battery life is generally one year.
- Assemble the device.

FAQ:

1.When can the device be located?

When an item is separated from its owner for a period of time, it can be found by other Apple devices that are part of the Find My network, and the owner can start to get the location of the device.

