

Can't connect?  
Need help?

---

**WE  
CAN  
HELP**

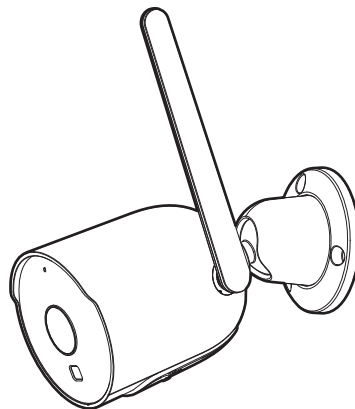
**DO NOT  
RETURN THIS  
PRODUCT TO  
THE STORE**

•

support.mercurysmart.com  
or tap 'support' for help in the  
Mercury Smart App.

**MERKURY**  
SMART 

•  
**START  
GUIDE**



**SMART WI-FI  
OUTDOOR  
CAMERA**

Scan code for the  
latest manual online



## Thank you for purchasing your MERKURY SMART home product.

Get started using your new devices by downloading **Merkury Smart App**, one convenient app that manages everything straight from your phone or tablet. Easily connect to your home Wi-Fi, and control multiple devices from the touch of your fingertips.

### 03

- Authorize your account with Smart Home Skills using the username and password from your Merkury Smart app.

### 04

- Choose “Discover Devices.” After a few seconds your Merkury devices will be displayed under Smart Home in the Alexa app.

#### Discover Devices

Smart Home devices must be discovered before they can be used with Alexa.

CANCEL

DISCOVER DEVICE

- You can rename your devices in the app, and Alexa will refer to them by the same name.  
So if you rename a smart Cam to “Living Room” or a nickname like a smart camera to “Living Room Camera” or “Baby’s Room.”

**Alternatively, you can create an Alexa group, like “Bedroom” or “Downstairs,” and add the device to the group.**

Alexa will recognize the group name in the Alexa app, or the device name in the Merkury Smart app.



To control your Mercury smart home products, just ask Alexa.  
Make sure your devices are already set up using the Mercury Smart app.

Things you can say\*:

"Alexa, show Living Room Camera."  
"Alexa, show me the kids room Camera."



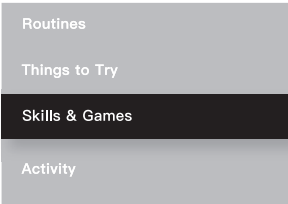
\*Some commands require compatible devices.

Stream to:

Amazon Echo Show, Amazon Fire TV, and any Alexa-enabled TV or screen.

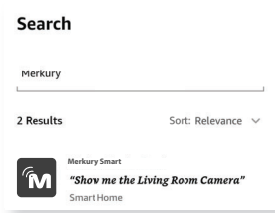
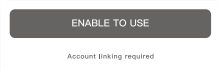
01

- Open the Alexa app and go to Skills in the menu.



02

- Search for Mercury Smart Cam then tap Enable.



Contents

■ Start Guide	
Download & Register	01
Plug in	02
Add Device (QR Code)	04
Add & Customize Tiles	07
Settings	08
Rules	10
Questions, Troubleshooting, Notices	11
■ Voice Control Guide	
Google Home	14
Amazon Alexa	16

**FCC Notice:**

This equipment has been tested and found to comply with the limits for a Class B digital device, pursuant to part 15 of the FCC Rules. These limits are designed to provide reasonable protection against harmful interference in a residential installation. This equipment generates, uses and can radiate radio frequency energy and, if not installed and used in accordance with the instructions, may cause harmful interference to radio communications. However, there is no guarantee that interference will not occur in a particular installation. If this equipment does cause harmful interference to radio or television reception, which can be determined by turning the equipment off and on, the user is encouraged to try to correct the interference by one or more of the following measures:

- Reorient or relocate the receiving antenna.
- Increase the separation between the equipment and receiver.
- Connect the equipment into an outlet on a circuit different from that to which the receiver is connected.
- Consult the dealer or an experienced radio/TV technician for help.

**Caution:** Any changes or modifications to this device not explicitly approved by manufacturer could void your authority to operate this equipment.

This device complies with part 15 of the FCC Rules. Operation is subject to the following two conditions: (1) This device may not cause harmful interference, and (2) this device must accept any interference received, including interference that may cause undesired operation.

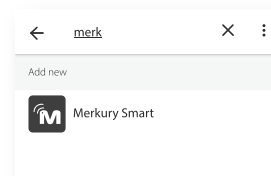
**Radiation Exposure Statement**

This equipment complies with FCC radiation exposure limits set forth for an uncontrolled environment.

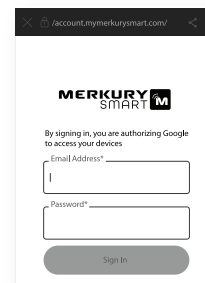
This equipment should be installed and operated with minimum distance 20cm between the radiator and your body

**03**

- Choose **Merkury Smart** from the list of Home Control partners.

**04**

- Authorize your account with Google Home using the username and password from your app.



Now your Google Home app and Merkury devices are linked!

You're now able to say "Hey Google" and control your Merkury devices.

- At any time, go into the "Home Control" section of the Google Home app to set nicknames and rooms for your devices. **You can rename your devices in the Merkury Smart app, and Google Home will refer to them by the same name.**

So if you rename a camera to 'Living Room Camera' or 'Baby's Room,' then Google Home will use that same name later on. You can always give it a nickname using the Google Home app as well.

Google Home will be able to control devices by room.



To control your Mercury Smart home products, just say "OK Google," or "Hey Google," and ask. Make sure your devices are already set up using the app.

## Things you can say\*:

"Hey Google, show me the Living Room Camera."  
"Hey Google, what's on Kid's Room Camera?"



\*Some commands require compatible devices.

## Stream to:

Google Home Hub, Google Home Smart Displays, Google Nest Hub, and any Google Chromecast-enabled TV, screen, or PC

## Support:

To explore our full selection of products, visit us at: [www.mercurysmart.com](http://www.mercurysmart.com)

If you encounter any issues, please contact us at [support.mercurysmart.com](mailto:support.mercurysmart.com) for help.

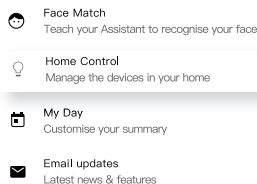
© 2025 Mercury Innovations • 45 Broadway 3rd FL, New York NY 10006.

The illustrated product and specifications may differ slightly from those supplied. iPhone, Apple and the Apple logo are trademarks of Apple Inc., registered in the U.S. and other countries. App Store is a service mark of Apple Inc. Google, Android, Google Play and Google Home are trademarks of Google LLC. iOS is a registered trademark of Cisco in the U.S. and other countries and is used under license. Amazon, Alexa and all related logos are trademarks of Amazon.com, Inc. or its affiliates. All other trademarks and trade names are those of their respective owners.

**Made in Vietnam**

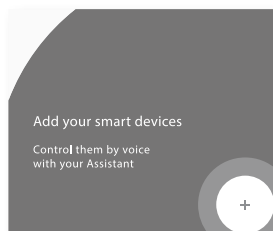
## 01

- Open the Google Home app and go to Home Control in the menu.



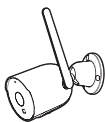
## 02

- Tap the "+" button.

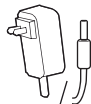


# START GUIDE

## What's in the Box



- Smart Wi-Fi Outdoor Camera



- Power Adapter and Cable



- Mounting Kit (Screws + Wall Anchors)



- User Manual

## Get Ready



- Know your Wi-Fi network and password



### 2.4GHz

- Make sure you're connecting to a 2.4GHz Wi-Fi network (**Camera can't connect to 5GHz networks**)



### iOS



### Android

- Make sure your mobile device is running the latest version of iOS® or Android™, or its two previous versions.



- a microSD card can be used to save recorded footage but is not required

Note: microSD card must be formatted to FAT32.

# VOICE CONTROL GUIDE

Thank you for purchasing your Mercury Smart home product. Make sure your devices are already set up using the Mercury Smart app, then follow these steps.

## Name and Control Each Device by Voice



## Contents

■ Voice Control Guide	
Google Home .....	14
Amazon Alexa .....	16

## Troubleshooting

### ■ Cannot connect to your Wi-Fi network.

Make sure you entered the correct Wi-Fi password during the Wi-Fi setup. Check whether there are any Internet connection problems. If the Wi-Fi signal is too weak, try moving device closer to the router or reset your Wi-Fi router and try again.

## Reset the device

- Reset the Camera by pressing & holding reset button until the LED blinks alternating slowly and quickly.

## System Requirements

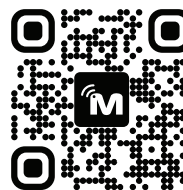
- Mobile device running the latest version of iOS® or Android™ or its two previous versions.
- Existing Wi-Fi Network

## Technical Specifications

- Camera: up to 1080p (1920 x 1080) at 15 frames/sec.
- H.264 encoding
- Field of View: 90° diagonal
- Audio: Internal Speaker and Microphone
- Storage: supports up to 128GB (FAT32 formatted) microSD card (not included)
- Wi-Fi not compatible with 5GHz Wi-Fi networks.

## STEP 1

- Download the **MERKURY SMART** app from App Store or Google Play.

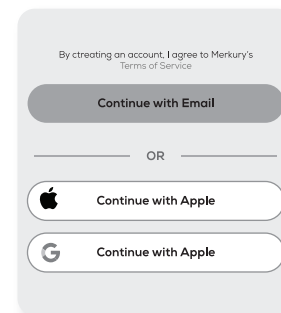


- Register an account on your Mercurly Smart app.

01.  
Enter your email address.

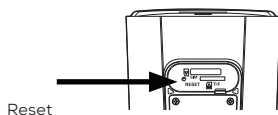
02.  
Enter the verification code and create a password.

03.  
Log in to the App.



## Resetting Device

Reset the Camera by pressing the reset button for 10 seconds.



**Solid Blue**  
Starting Up



**Blinking Blue**  
Ready to connect



**Solid Blue**  
Connected

## STEP 1

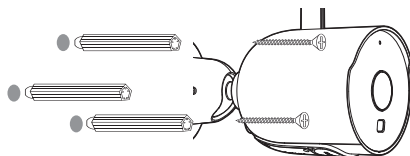
### ■ Setup Camera

01.

If you would like to use the included installation mount kit, you can screw in the base of the camera using the included screws and anchors. Refer to the drawing.

**NOTE:** Before installing, be sure the desired location is accessible to a power source.

Mounting Kit



## Frequently Asked Questions

### ■ How can I share videos with family and friends?

Select the "Activity" tab on the bottom navigation bar and view an activity to share with others. Use the "Share" button to choose how you want to share the activity event.

### ■ How do I customize my dashboard?

Select the "Edit" option on the top of "Home" page. Create additional pages on your dashboard by dragging tiles to the right and organize devices to fit how you use them.

### ■ How many devices can I control?

Merkury Smart app can control an unlimited amount of devices in an unlimited amount of locations. Your router may have a limit of how many devices can be connected to one router.

### ■ My Merkury device has a funny name. How do I rename it?

From your main device list, click on the device you want to rename, then click "Device Settings", then click on "Device Name". Rename your device to a more familiar name like "Bedroom" or "Living Room" and then click Save.

### ■ The device appears offline or unreachable, what should I do?

Make sure your Wi-Fi router is online and in range. Make sure your device is plugged in and paired. You may also try restarting the device or if needed, re-pairing it.

### ■ What's the wireless range?

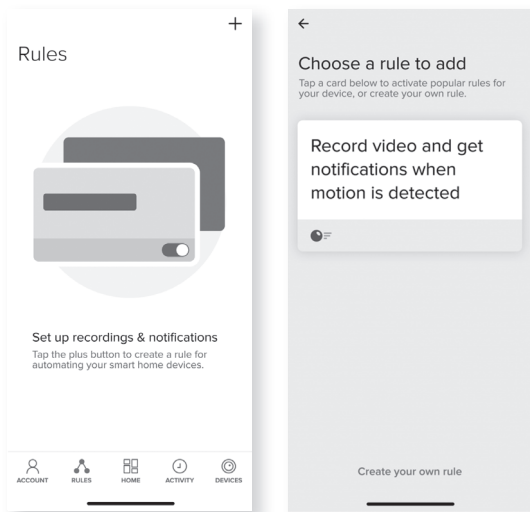
The range of your home Wi-Fi is heavily dependent on your home router and the conditions of the room. Check with your router specifications for exact range data.

### ■ If my Wi-Fi/Internet goes down, will my devices still work?

Merkury products need to be connected to Wi-Fi in order to use them remotely.



## RULES



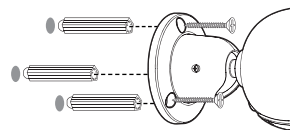
### Create Motion & Sound Detection Rules

01.  
Select the "Rules" tab on the bottom navigation bar and tap the "+" at the top corner of the screen.

02.  
You can use a recommended rule, like "Record video and get notifications when motion is detected", or create your own.

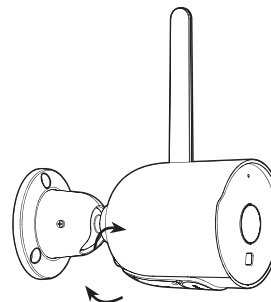
### ■ Plug In

01.  
Unfold the included antenna so that it is pointing upwards for an optimal signal.



02.  
Use the included 3 screws and wall anchors to mount the camera to the desired wall.

03.  
Adjust the camera to the desired angle and direction.



04.  
Plug camera into power source using the included power cable. The indicator will remain solid red when starting up, but will begin to blink red when connected. If it does not blink, please reset the camera using the reset button.



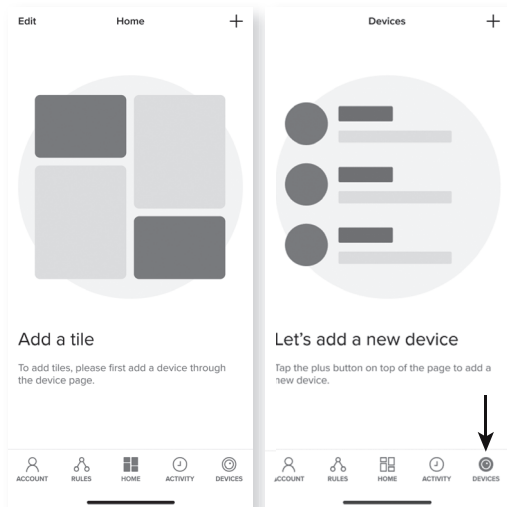
**Solid Blue**  
Starting Up



**Blinking Blue**  
Ready to connect

## STEP 2

### ■ Add device:



01.

Be sure to reset camera by pressing the reset button for 10 seconds.

02.

In the app, tap the "Devices" tab on the bottom and tap "+" in the top corner of the Devices screen.

03.

Choose "Wi-Fi Camera" and enter your Wi-Fi details.

04.

Scan the QR code with the camera. When you hear the camera beep, select 'I heard the sound' and it will add your camera.

### ■ Motion Zones:

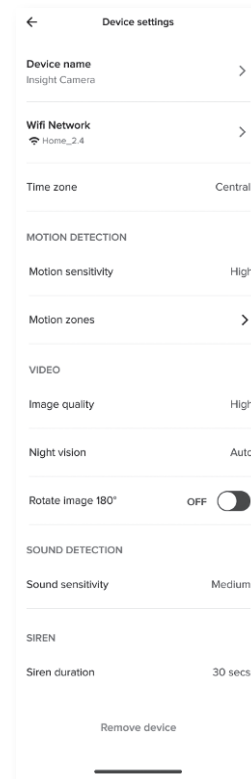
Click Motion Zones and then click on each square to deactivate or activate that zone from detecting motion, then click Save.

### ■ Rotate image:

If you mount your camera upside down, toggling this switch will rotate the image so that it's right side up.

### ■ Remove Device:

Delete the camera from your account. Until it's deleted, it will always be linked to your account.



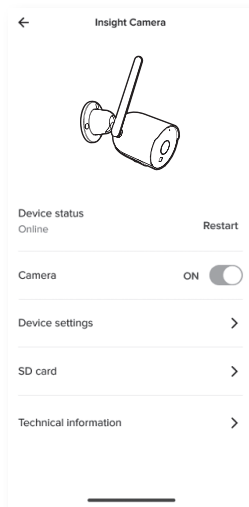
## SETTINGS

### ■ Access Camera Settings:

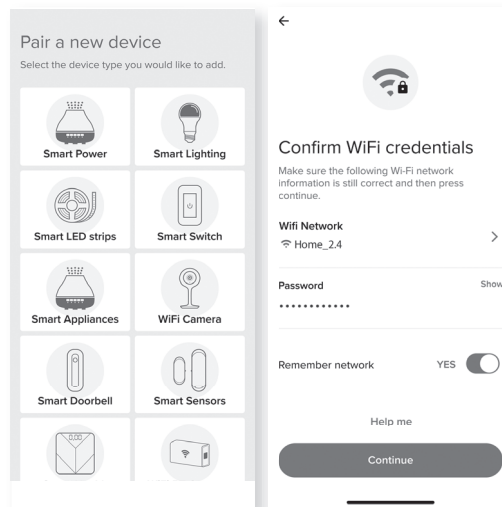
From your main device list, click the camera you want to edit, then click Device Settings.

### ■ Device Name:

Device Name to rename your camera to something like "Family room" or "Back hallway", then click Save.

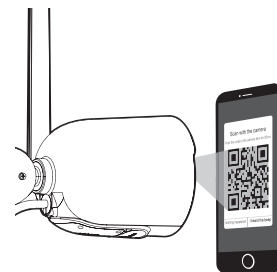


### ■ Connect Wi-Fi & QR scan:



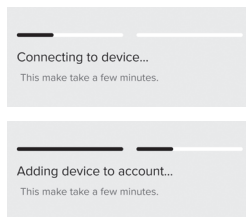
05.

The indicator light will turn solid blue when the device has connected successfully!



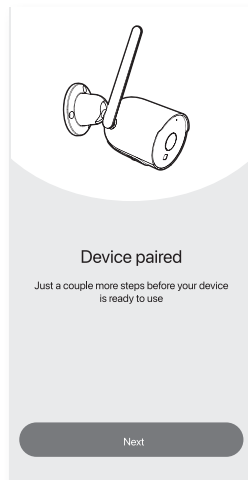
**NOTE:** This camera can't connect to 5GHz networks.

## ■ Pairing Device



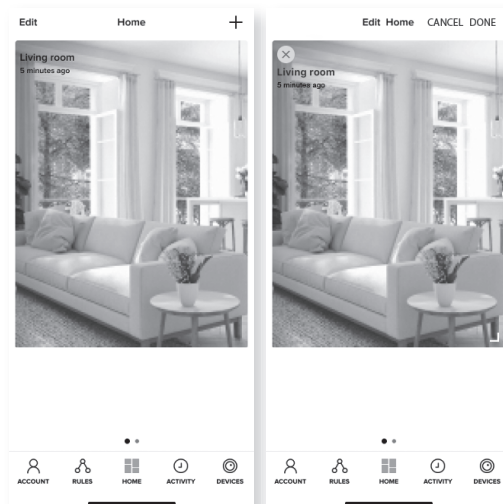
06.

The app will attempt to connect. This may take a few moments.



## STEP 3

### ■ Add tiles:



01.

Upon successful pairing, a tile for the camera will automatically be added to the dashboard. You can add tiles with the "+" on the Home page or resize, organize, and remove tiles by tapping "Edit".

02.

Press the camera tile to view a live stream from the camera.