

DEHUMIDIFIER INSTRUCTION MANUAL



Please read the instruction manual before using the machine. Save it well.

Email US: boglvrcustomer@outlook.com

Our Dehumidifier has a one-year warranty. If you have any questions, pls contact us.

PLEASE DO NOT RETURN THIS ITEM TO PLACE OF PURCHASE

If you are missing some parts, have any issues when operating this product, need replacement, return or need assistance, please contact:

Email: boglvrcustomer@outlook.com



Scan the QR code to
contact us via email

24/7 PROFESSIONAL CHAT SUPPORT

We promise to respond within 12 hours

CONTENTS

PREFACE	01
SAFETY INFORMATION (HOUSEHOLD USE ONLY)	02
PRODUCT PARTS DESCRIPTION	07
SPECIFICATION AND FUNCTION	08
OPERATION	09
APP CONNECTION	16
REMOVING THE COLLECTED WATER (2 WAYS TO USE)	25
CARE & MAINTENANCE	26
TROUBLESHOOTING	28
WARRANTY INFORMATION	30

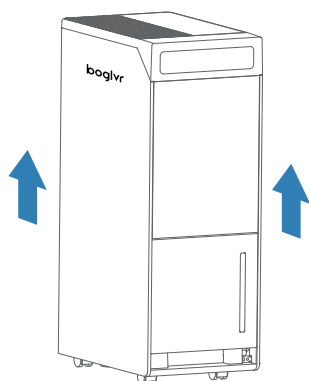
1 PREFACE

FOR CUSTOMERS

Thank you for purchasing our Compressor Dehumidifier! Please be sure to read the entirety of this user manual carefully before use of the product. If you have any questions regarding the use of this product, please reach out to us at **boglvrcustomer@outlook.com** We hope you enjoy your new Energy Star dehumidifier!

BEFORE FIRST USE

To prevent any internal damage, it is essential to keep refrigeration units (Figure 1.0) UPRIGHT throughout their journey. **Please leave it standing upright and outside the box for 24 HOURS before plugging it in.**



IMPORTANT NOTICE FOR FIRST USE.

PLEASE NOTE:

This dehumidifier defaults to **CONTINUOUS MODE**, disabling Use of the **LEFT/RIGHT** buttons. To regain use of the buttons, confirm the **CONTINUOUS MODE** is turned off.

TURN OFF
DEHUMIDIFIER



TURN OFF
CONTINUOUS MODE



BEGIN USING
LEFT/RIGHT BUTTONS



In the event this product malfunctions or the customer believes it is defective, the customer should contact Customer Service and retain the defective product pending further instructions. Defective products should be marked or stored so that they cannot be used again by mistake. Failure to retain the product may impede our ability to correct any legitimate problem and may limit the extent to which we may provide recourse.

PACKAGE CONTENTS

1x Compressor Dehumidifier

1 x User Manual

1 x Drain Hose

2 SAFETY INFORMATION (HOUSEHOLD USE ONLY)

To prevent injury to the user or other people and property damage, the following instructions must be followed when using the dehumidifier. Incorrect operation due to disregard of instructions may cause harm or damage.

1. **Do not** touch the plug with wet hands.
2. **Do not** climb on or sit on the dehumidifier, don't place objects on it.
3. **Do not** use the dehumidifier in small spaces.
4. **Do not** use in areas where chemicals are handled.
5. **Do not** place the dehumidifier near a heat source.
6. **Do not** use it if the power cord is broken or damaged.
(Note: Place the dehumidifier on a level, sturdy section of the floor.)
7. **Do not** take out the bucket when the dehumidifier is working
Never try to disassemble or repair the dehumidifier by yourself.
8. **Do not** drink or use the water discharged from the dehumidifier
(Note: Make sure to turn off and unplug the dehumidifier before cleaning.)
9. **Do not** exceed the rating of the power outlet or connected device.
10. **Do not** modify the power cord length or share the outlet with other appliances.
11. **Do not** place the dehumidifier in places where it may be splashed by water.
(Note: Always insert the filter firmly. Make sure to clean the filter once a month.)

12. **Do not** put vases or other water containers on top of the dehumidifier. (Note: 1. Be sure to run the water hose sloping downward to let the water flow out smoothly. 2. Disconnect the power if strange sounds, smells, or smoke come from the dehumidifier.)
13. **Do not** place heavy objects on the power cord, and make sure that the power cord is not stressed. (Note: For people who are sensitive to humidity, do not set the humidity level too low on the dehumidifier.)
14. **Do not** use the dehumidifier near flammable gas or combustibles, such as gasoline, benzene, thinner, etc.
15. **Do not** use any chemicals or organic solvents to clean the equipment, such as ethyl acetate, gasoline.
16. **Do not** operate or turn off the dehumidifier by plugging in or unplugging the device. Use the control panel instead.
17. Care should be taken when using the dehumidifier in a room with the following persons: infants, children and the elderly.
18. **Never** insert your finger or other foreign objects into grills or openings. Take special care to warn children of these dangers.
19. **Do not** cover the intake or exhaust openings of the dehumidifier with cloths or towels. The power supply must be cut off during thunderstorms; the appliance is for indoor use only.

If water enters the dehumidifier, please turn off the dehumidifier and disconnect the power, Contact customer **service at boglvrcustomer@outlook.com** to avoid danger.

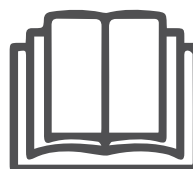
IMPORTANT SAFETY INSTRUCTIONS

1. Be sure the dehumidifier is properly grounded. To minimize shock and fire hazards, proper grounding is important. This power cord is equipped with a three-prong grounding plug for protection against shock hazards.
2. Your dehumidifier must be used in a properly grounded wall socket. If your wall socket is not adequately grounded or protected by a time-delay fuse or circuit breaker, have a qualified electrician install the proper socket.
3. Avoid fire hazards or electric shock. Do not use an extension cord or an adapter plug. Do not remove any prongs from the power cord.

CAUTION

1. This dehumidifier can only be used by children 8 years or older and persons with reduced physical, sensory, or mental capabilities or lack of experience and knowledge with supervision or instruction concerning the use of the dehumidifier. Cleaning and user maintenance shall not be done by children without supervision.
2. If the supply cord is damaged, it must be replaced by qualified personnel. Please Contact Customer Service to avoid a hazard.
3. If the dehumidifier is knocked over during use, turn off the dehumidifier and unplug it from the main power supply immediately. Visually inspect the dehumidifier to ensure there is no damage. If you suspect the dehumidifier has been damaged, contact Customer Service at **boglvrcustomer@outlook.com**.
4. To reduce the risk of fire or electric shock, do not use this dehumidifier with any solid-state speedcontrol device.

5. The dehumidifier shall be installed by national wiring regulations.
6. Details of type and rating of fuses: T, 250V AC, 16A.
7. Please keep the machine on flat and firm ground. The gap between the walls and the machine should be over 19.65 inches(50cm) for better heat release.
8. Recycling.
- ① This marking indicates that this product should not be disposed of with other household waste throughout the EU.
- ② To prevent possible harm to the environment or human health from uncontrolled waste disposal, recycle it responsibly to promote the sustainable reuse of material resources.
- ③ To return your used device, please use the return and collection systems or contact the retailer where the product was purchased. They can take this product for environmentally safe recycling.



FCC STATEMENT:

This device complies with part 15 of the FCC Rules. Operation is subject to the following two conditions:

(1) This device may not cause harmful interference, and (2) this device must accept any interference received, including interference that may cause undesired operation.

Any Changes or modifications not expressly approved by the party responsible for compliance could void the user's authority to operate the equipment.

Note: This equipment has been tested and found to comply with the limits for a Class B digital device, pursuant to part 15 of the FCC Rules. These limits are designed to provide reasonable protection against harmful interference in a residential installation. This equipment generates uses and can radiate radio frequency energy and, if not installed and used in accordance with the instructions, may cause harmful interference to radio communications. However, there is no guarantee that interference will not occur in a particular installation. If this equipment does cause harmful interference to radio or television reception, which can be determined by turning the equipment off and on, the user is encouraged to try to correct the interference by one or more of the following measures:

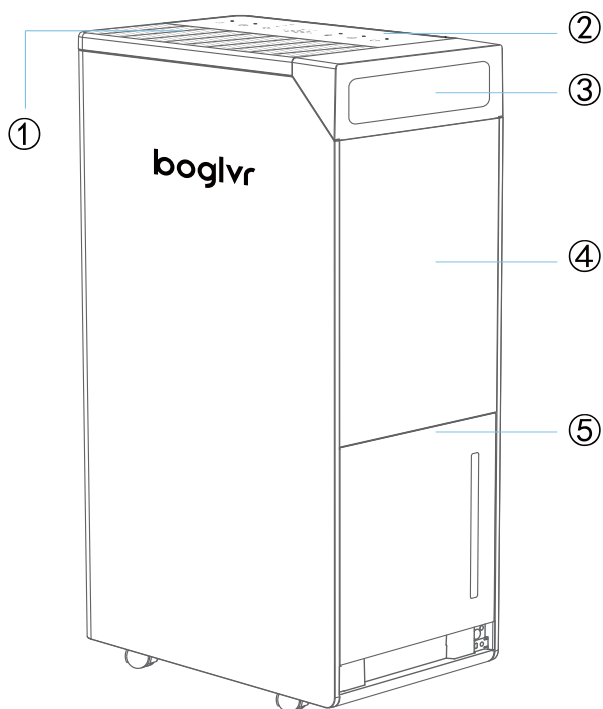
- Reorient or relocate the receiving antenna.
- Increase the separation between the equipment and receiver.
- Connect the equipment into an outlet on a circuit different from that to which the receiver is connected.
- Consult the dealer or an experienced radio/TV technician for help.

RF warning for Mobile device:

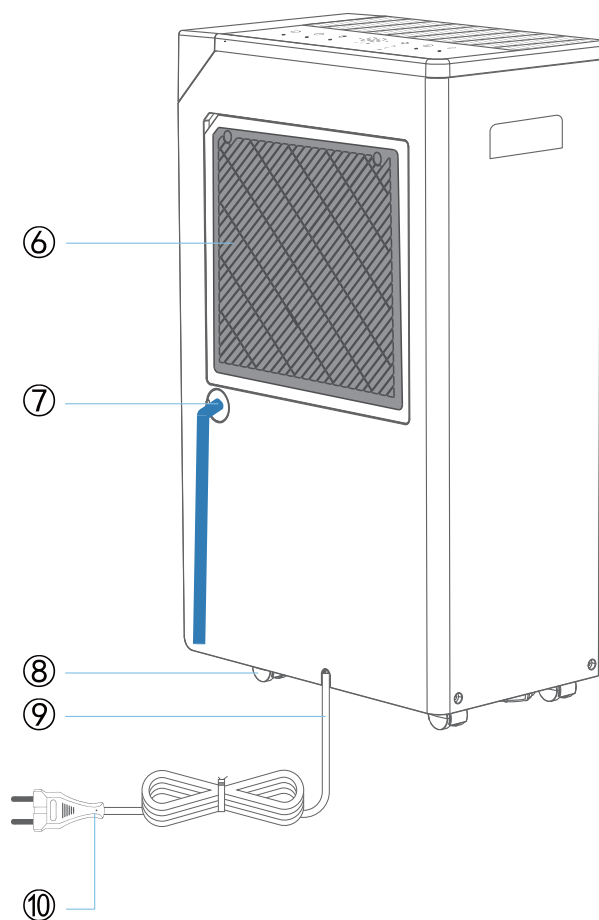
This equipment complies with FCC radiation exposure limits set forth for an uncontrolled environment. This equipment should be installed and operated with minimum distance 20cm between the radiator & your body.

3 PRODUCT PARTS DESCRIPTION

FRONT



BEHIND



① Air Outlet

② Control Panel

③ Handle

④ Panel

⑤ Bucket

⑥ Air intake /Air Filter

⑦ Drain Hose

⑧ Caster

⑨ Power Cord

⑩ Power Plug

4

SPECIFICATION AND FUNCTION

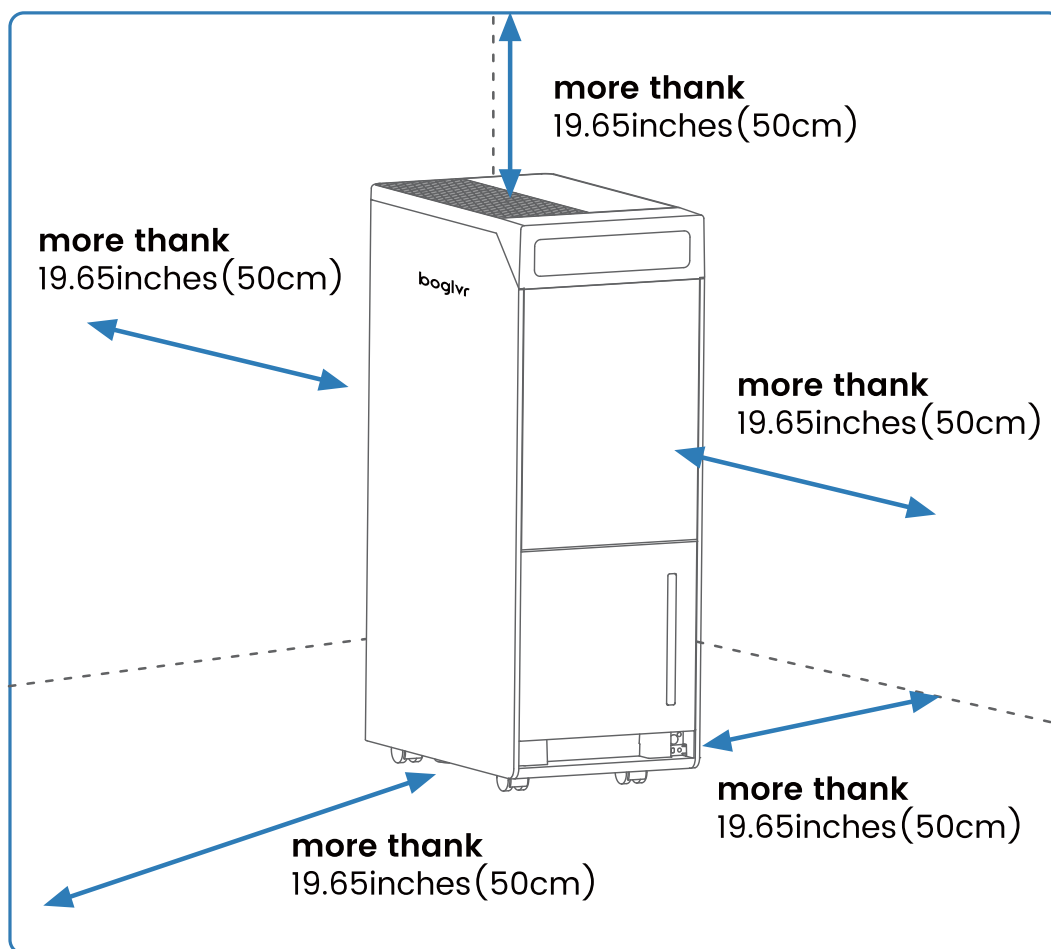
Region		China
Model		LIBRA-RCS25(Y)-N4-3
Voltage		120V ~ 60Hz
Power		280W
Refrigerant		R32 / 115g
Daily Dehumidification Capacity		52 Pints/Day
Dehumidification Mode		Continuous Dehumidification, Comfortable Dehumidification, Custom Dehumidification
Water Tank Capacity		5.7 L
Water Tank Move Mode		Push-Pull
Noise Decibel		≤ 45dB
Timing Wind		Custom 0-24h
Gear Product		Low / Medium / High
Net/Gross Weight (lb)		32.19 / 34.2
Product Dimension		14.41*8.66*24.13 inch
Function	Child Lock	Standard
	Full Water Tank Alarm	Standard
	Fan Speed	Standard
	Wi-Fi	Optional
	Casters	Standard

5 OPERATION

PLACE CORRECTLY

- This unit may have been tilted or placed upside down during shipping. To ensure this device works properly, please ensure this unit is **upright for at least 24 hours before initial use.**
- This dehumidifier is designed to operate in a working environment between 4°F (5°F) and 95°F(35°C).

Do not force casters (installed at four points on the bottom of the dehumidifier) to move over the carpet, or move the dehumidifier with water in the bucket. (The dehumidifier may tip over and spill water).



WARM REMINDER

- **Auto shut off**

When the bucket is full and/or the humidity setting is reached, the dehumidifier will automatically shut off.

- **Power-on Delay**

To avoid any damage to the dehumidifier, the dehumidifier will not start operation following a complete cycle until after three (3) minutes. The operation will automatically start after three (3) minutes.

- **Water Tank Full Indicator Light**

The indicator glows when the bucket is ready to be emptied.

- **Auto Defrost**

The LED displays " H5 ", when the frost builds up on the evaporator coils, the compressor will cycle off and the fan will continue to run until the frost disappears.

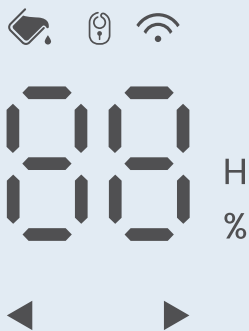
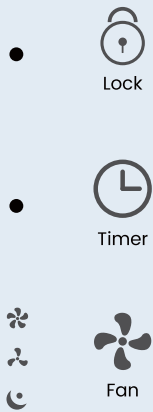
- **Auto-Restart**

If the dehumidifier shuts off unexpectedly due to power being cut, the dehumidifier will restart with the previous function setting automatically when the power resumes.

NOTE:

All the illustrations in the manual are for explanation purposes only. Your dehumidifier may be slightly different. The actual shape shall prevail. The design and specifications are subject to change without prior notice for product improvement. Consult Customer Service for details.

CONTROL PANEL



Child Lock Function



- ① The child lock feature is designed to prevent accidental operation by children or pets.
- ② To activate the child lock, press the [Lock] button. Once activated, all control panel buttons will be disabled and the unit will remain in its current operating mode.
- ③ To deactivate the child lock, press and hold the [Lock] button.

Timer Key Function (0-24Hours)

This button is used to set either an Auto ON or Auto OFF timer, with a range of 0 to 24 hours. Each press increases or decreases the timer value by 1 hour using the Left ◀ and Right ▶ adjustment buttons.

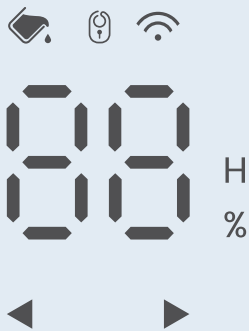
How to Set the Timer:



- ① Press the Timer button.
- ② Use the ◀ and ▶ buttons to select your desired timing (0–24 hours).
- ③ The timer indicator light will illuminate, confirming the timer has been set.

NOTE: When the set time is up, the machine shuts down and enters the standby state.

CONTROL PANEL



To Cancel the Timer:

- ① Press the Timer button again. The indicator light will turn off and the timer will be canceled.
- ② If the unit is turned off manually using the On/Off button before the timer completes, the timer setting will also be canceled.
- ③ If you want to change the original setting, you can press the Timer key again to reset the timing.



Timer Accuracy:

When ambient temperature is between 0°C–40°C, timing accuracy is within $\pm 0.7\%$, which is considered normal.

To Reset the Timer:

Simply press the Timer button again and reselect the desired time using the [◀] and [▶] buttons.

Wind speed Button (3 Gears Speeds)

Low Speed Mode: Press this button once.

Medium Speed Mode: Press this button twice.

High speed: Press this button three times.



NOTE:

1. Low Speed Mode (Sleep Mode): The brightness of all LED lights will be reduced when there is no operation in the 5S system.
2. (🔒) This button also serves as the child lock key. **Press it for 3 seconds to activate or shut down the child lock, and the corresponding indicator light will be on or off.**

CONTROL PANEL



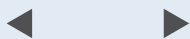
Lock



Timer



Fan



Setting



Comfort



Power

LED Display

The two-digit code tube is a white light highlight field: its display functions are as follows.

1. The states of the current measured ambient relative humidity are displayed as follows.



- ① In the startup state, the humidity can be displayed directly.
- ② In the shutdown state, the number is not displayed. The normal range of ambient humidity is 40%-80%; LO is shown when it is below 40%, and HI is shown when it is above 80%.

2. Set humidity display: You can start after pressing the humidistat key, and the left and right adjustment keys. See "Description of humidistat key" for details.

Full Water Tank Detection & Response

When the water tank is full, the Full Tank Indicator Light and the Environmental Display Light will both illuminate.

The following rules are used to determine whether the tank is considered full:

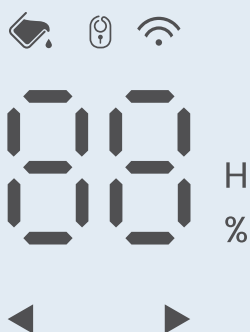
- ① If the Full Tank signal is continuously detected as valid for 3 seconds, the system will confirm that the tank is full.
- ② If the Full Tank signal becomes invalid for 1 second, the system will determine that the tank is not full and will return to normal operation.



Once the Full Tank signal is confirmed, the dehumidifier will respond as follows:

- ① The machine will automatically stop operating.
- ② The Full Tank indicator light will remain steadily on; all other indicator lights will turn off.

CONTROL PANEL



③ The buzzer will not sound when the tank becomes full.

④ All buttons will be disabled except for the Power On/Off button.

⑤ To power off the unit, press the Power On/Off button. This will shut down the entire machine, not just turn off the Full Tank indicator.



After the tank is emptied and reinstalled correctly:

① The Full Tank indicator will turn off.

② The buzzer will not sound.

③ The machine will automatically resume operation with the same mode and settings as before the tank was full.

Note: The compressor will follow the standard 3-minute delay protection before restarting.

WIFI Indicator Light

Slow flash--Compatible networking mode to wait for networking

Quick flash--Waiting for networking



Normally on--The network has been connected

Normally off--The machine is in standby state, or the network is not connected, or the WIFI module signal is not detected.

Note: In standby mode, the default WIFI indicator light is off.

Left and Right Adjustment Button

NOTE:

1. When the dehumidifier is first turned on, it will go into Continuous mode by default. This will disable the use of the LEFT/RIGHT buttons.

2. Make sure to turn off Continuous mode to regain function in these buttons.

3. This button is only effective when either the Manual Dehumidification key or the Timer button is valid.



CONTROL PANEL



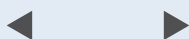
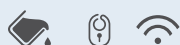
Lock



Timer



Fan



Setting



Comfort



Power

Humidistat key



Setting

The corresponding status indicator light and humidity symbol "%" is turned on, and the Left and Right Adjustment keys light up and flash. At this time, the required target humidity can be set through the left and right adjustment keys. The **humidity range is between 40% and 80%**, with the initial state being "40%". The value increases or decreases by 5% every time this Key is pressed. When it is set as "40", it means that no target humidity is set, and if there is no signal showing that the Left and Right Adjustment keys are pressed in more than 3 seconds, the setting will be considered valid; meanwhile, the Left and Right Adjustment keys will be closed synchronously and resume the normal display state.

Comfort Mode Button



Comfort

In the startup status, press the Comfort key; its indicator light will be on, and the machine will enter the status of comfortable dehumidification (**humidity will be controlled automatically between 45% and 55%**). Press this key again. Its indicator light will be off, and every time it is pressed, the Buzzer will sound once.

Power Button



Power

It is used for Power ON or Power OFF. Press it once and the machine will switch between these two states. When the machine is started, it continues working from the last time, and the power indicator lights up.

6 APP CONNECTION

- 1 Scan the QR code below or search for“Tuya Smart”or“Smart Life”in the APP Store to download.
- 2 Follow the APP instructions to register.



Bluetooth Mode



Email US: boglvrcustomer@outlook.com

1. Use Your LIBRA with the “Tuya Smart” or “Smart Life” APP

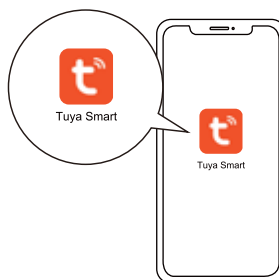
To enjoy all available features, it is recommended to control your Dehumidifier via the “Tuya Smart” or “Smart Life” Robot App.



“Tuya Smart” APP



“Smart Life” APP



Scan the QR code as below to download the latest version of App or download from the App Store (iOS devices) or Google Play (Android devices).

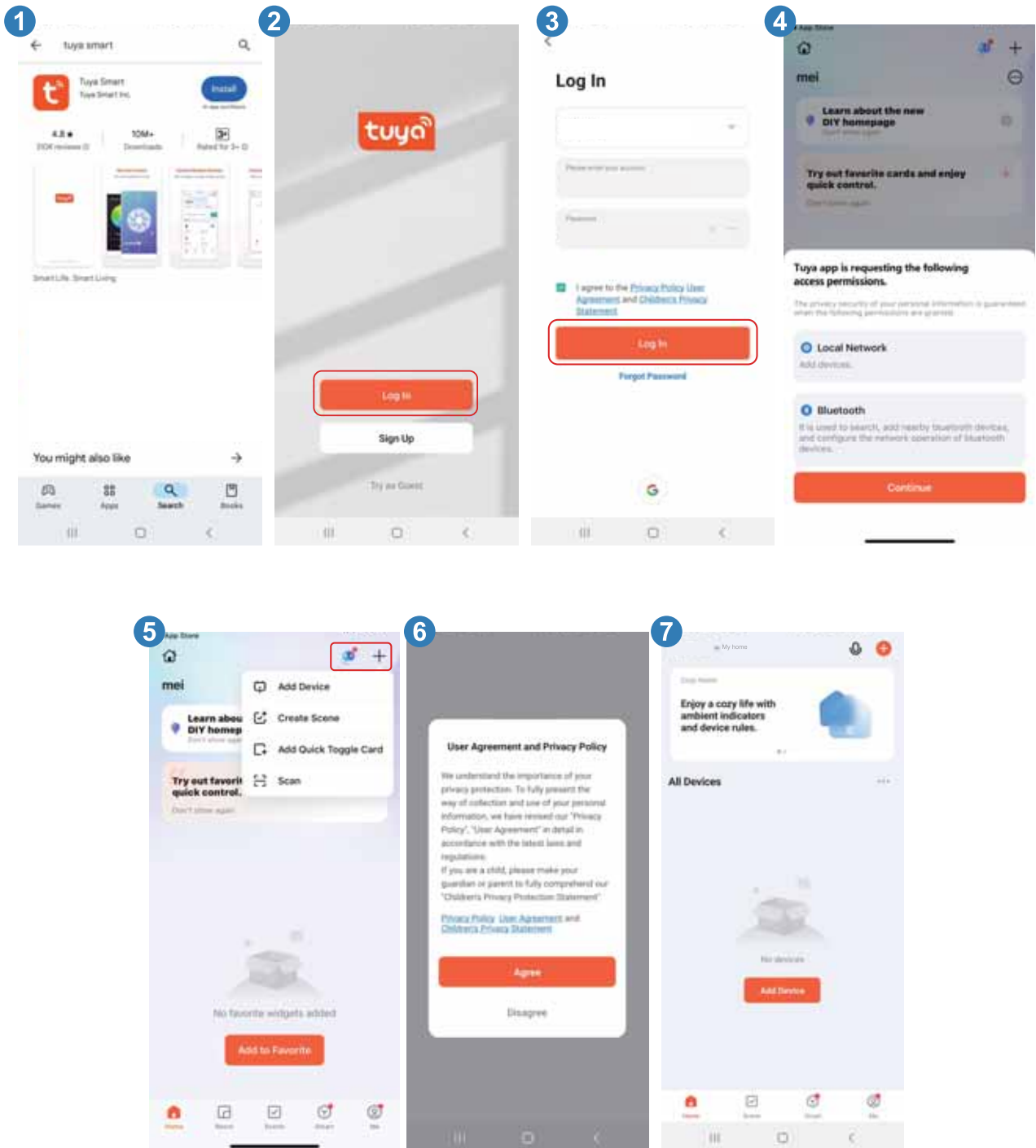
Before you start, make sure that:

1. Your smartphone or tablet is connected to a 2.4GHz Wi-Fi network (Only supports 2.4GHz network).
2. Your smartphone or tablet is running iOS 8.0 (or above) or Android 4.4 (or above).
3. Long-press the Timer ⌚ button for 5 seconds till the 📶 Wifi-Light on the Dehumidifier is rapidly flashing white.

Warm Reminder

Tips: Download and when using the App, it is recommended to turn on the following permissions to avoid not being able to connect to the App.

*As the app is constantly updated, some features may vary. For any inquiries, please reach out to our customer support.



2. Bluetooth Connection (NOTE: First Connection Mode)

Make sure your phone is “Bluetooth Enabled”

*If automatic WiFi connection fails, manually enter the WiFi network name and password (Only supports 2.4GHz networks).

Step-1

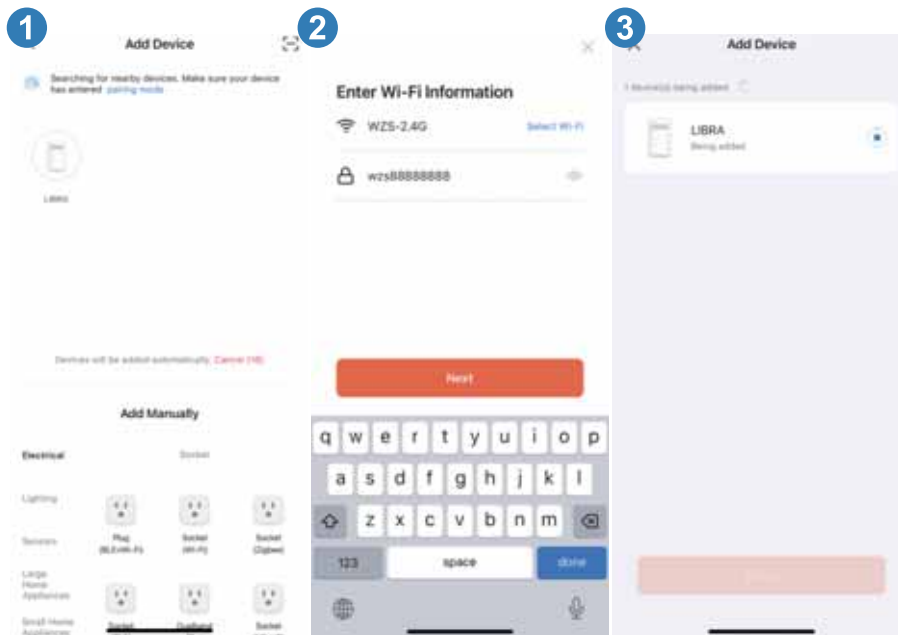
Press and hold the “  ” for 3-5s to turn on the device

- ① Mobile phone Bluetooth.
- ② Power on the dehumidifier, log in to the “Tuya Smart” or “Smart Life” APP, click "add device", switch the device on first.



Step-2

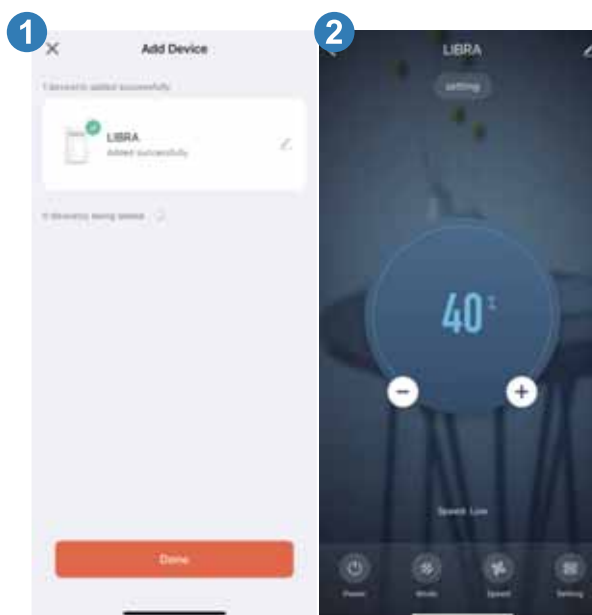
Press and hold the device Timer “ ⌚ ” for 3-5s



③ Search“LIBRA”and connect the device, find the Wi-Fi 2.4 GHz, and enter the Wi-Fi name and password.

Step-3

Confirm that the“ 📶 ” light flashes white, play the corresponding prompt, and enter the network configuration

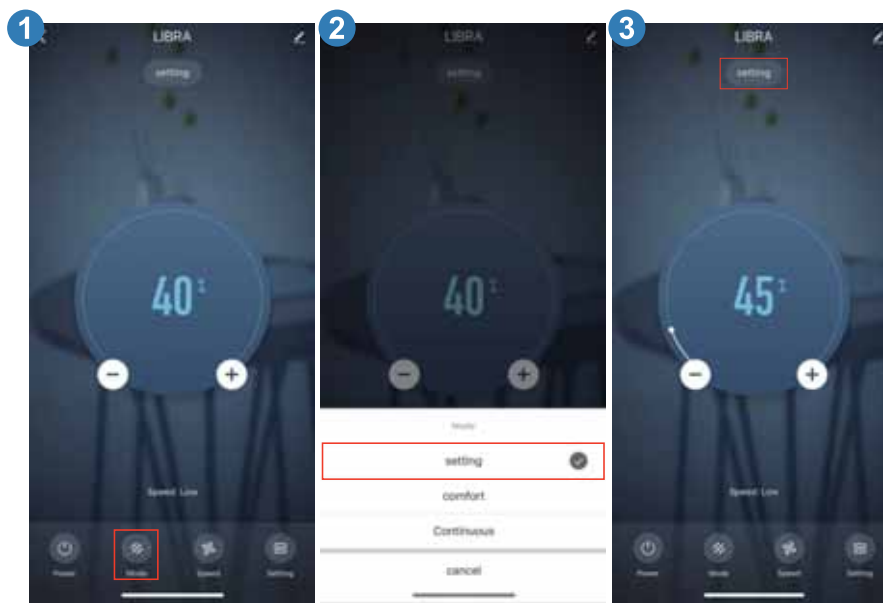


④ Wait for the connection progress to reach full. Click "Done." Bluetooth mode is connected, and enter the operation interface.

3. Three Dehumidification Modes to Suit Your Needs

Step-1

Custom Mode: Set your desired humidity level (between 40% - 80%) based on your personal preferences or specific room requirements.



Step-2

Comfort Mode: Automatically maintains an optimal indoor humidity range between 45%–55% RH, ideal for everyday comfort and well-being.



Step-3

Continuous Mode: The compressor runs continuously for uninterrupted dehumidification, perfect for areas with persistent humidity or when rapid moisture removal is needed.

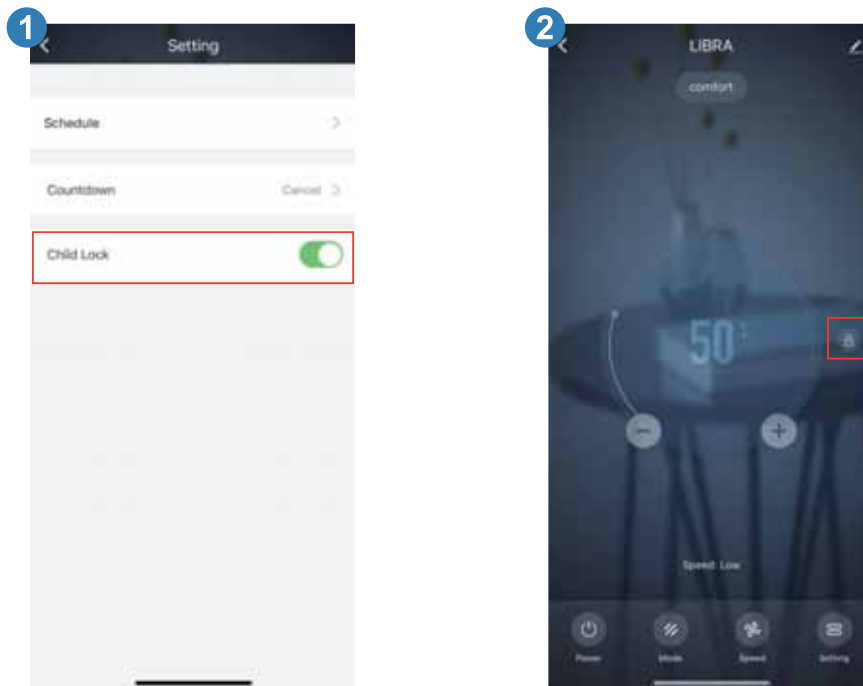


4. Three Fan Speeds Available Modes to Suit Your Needs

1. Three Fan Speeds Available – Choose from Low, Medium, or High to suit different room sizes and noise preferences.
2. Adjustable Wind Speed – Features three airflow levels (Low/Medium/High) for customized comfort and efficient dehumidification.
3. 3-Speed Fan Control – Easily switch between fan speeds to balance noise and drying performance based on your needs.

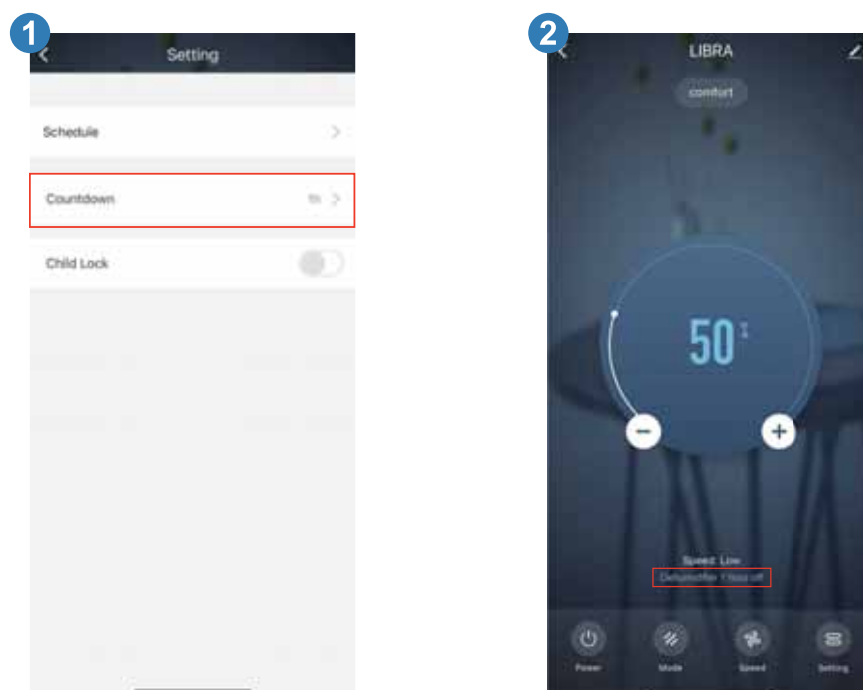


5. Kid-Friendly Design with Safety Lock Feature

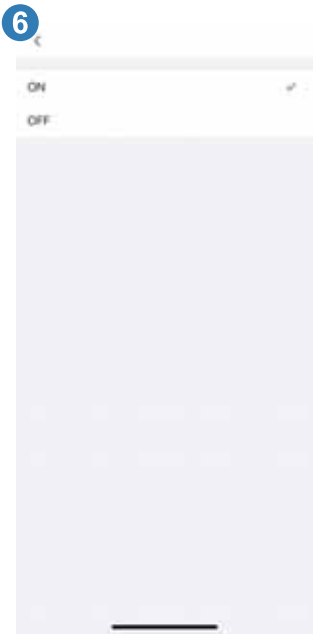
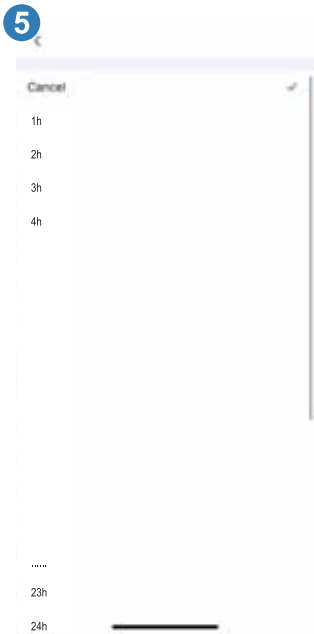
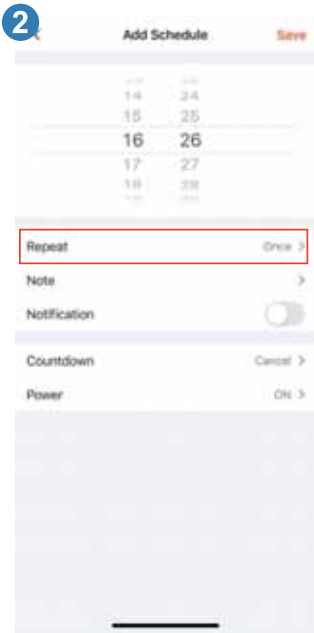
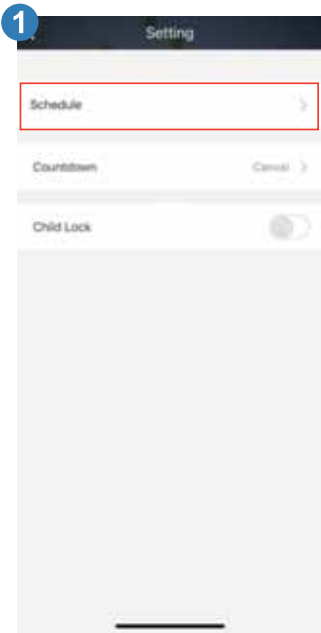


6. Dual Timer Modes for Flexible Control

1. Simple Countdown Timer – Set a countdown from 1 to 24 hours to automatically turn the device OFF, perfect for one-time scenarios like sleeping, going out, or energy-saving use.

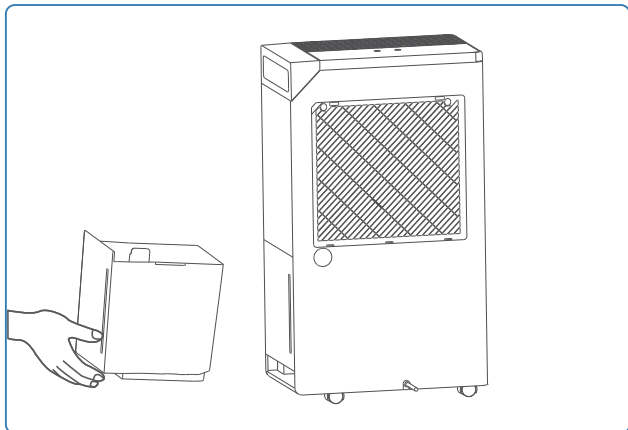


2. Weekly Scheduling Mode – Create a personalized weekly schedule by setting specific ON/OFF times for each day (Monday through Sunday).
You can even add labels or notes to each schedule to better organize your routines — ideal for distinguishing between weekdays and weekends, or day and night usage.

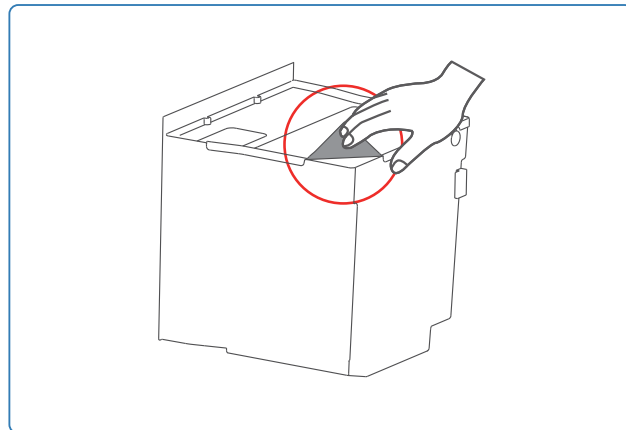


7 REMOVING THE COLLECTED WATER (2 WAYS TO USE)

Use the water tank



When the Water tank is full, remove the tank and empty it.

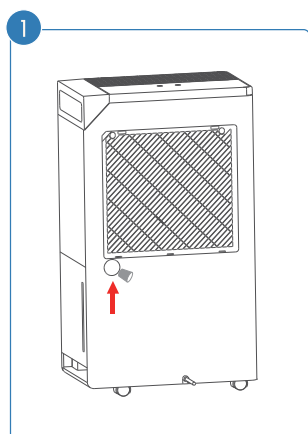


Lift the drainage lid and pour out water.

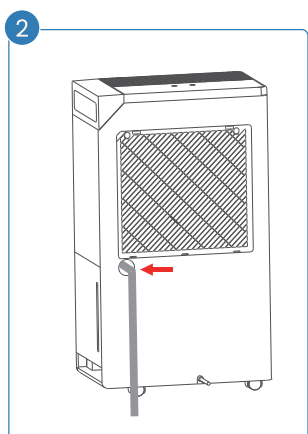
Continuous Draining

Water can be automatically emptied into a floor drain by attaching the dehumidifier to a drain hose. And open the soft water plug at the rear shell and insert one end of it into the continuous drainage hole of the machine, with the other end in the drainage area.

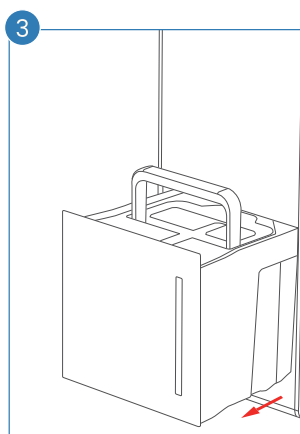
How to use the drain hose?



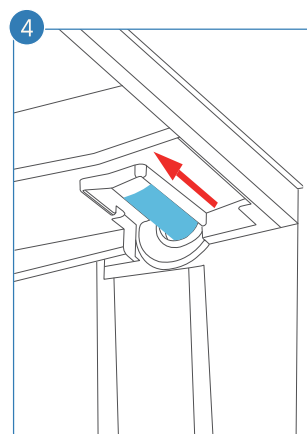
Open the water plug.



Insert the drain hose.



Take out the water tank.



Connect the drain hose, check the connections and put the tank back in place.

NOTE:

Do not use continuous draining when the outdoor temperature is equal to or less than 32°F (0°C); otherwise, the water will freeze, causing the water hose to block up and the dehumidifier may be damaged.

Make sure the connection is tight and there is no leaking.

- Lead the water hose to the floor drain or a suitable drainage facility; the drainage facility should be below the drain outlet of the dehumidifier.
- Be sure to run the water hose sloping downward to let the water flow out smoothly.
- When the continuous drain feature is not being used, remove the drain hose from the outlet and replace the plastic cover of the continuous drain hose outlet tightly.

8 CARE & MAINTENANCE



WARNING:

1. Turn the dehumidifier off and remove the plug from the wall outlet before cleaning. Clean the dehumidifier with water and mild detergent.
2. **Do not** use bleach or abrasives.

Clean the Grille and Case

- **Do not** splash water directly onto the main unit. Doing so may cause an electrical shock, cause the insulation to deteriorate, or cause the unit to rust.
- The air intake and outlet grilles get soiled easily. Use a vacuum attachment or brush to clean.

Clean the Water Tank

- Clean the tank with water and mild detergent every two (2) weeks.

Clean the Air Filter

- Clean the filter with potable water at least once every 30 days.
The filter can be removed for cleaning from the buckle on the left side plate, and it can be easily installed by inserting the buckle into the slot.

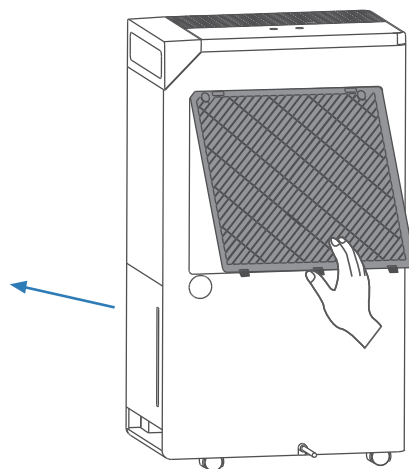
Storing the Dehumidifier

Store the dehumidifier when it will not be used for a long time.

- After turning off the dehumidifier, wait one day until all water in the internal of the dehumidifier flows into the bucket, and then empty the bucket.
- Clean the main dehumidifier, bucket and air filter.
- Wrap the cord and bundle it with the band.
- Cover the dehumidifier with a plastic bag.
- Store the dehumidifier upright in a dry, well-ventilated place.

CAUTION:

Do not operate the dehumidifier without a filter because dirt and lint will clog it and reduce performance.



9 TROUBLESHOOTING

The following list contains the common problems, but none of them are faults caused by imperfect manufacturing process or material defects.

Before cleaning or maintaining the machine in any mode, the machine must be shut down, the power plug must be unplugged, and water cannot be sprinkled on the machine. Clean the casing with a soft wet cloth, and chemical solvents such as benzene, alcohol and gasoline are not allowed to be used; otherwise, the machine casing will be damaged or even deformed.

Conditions for the machine compressor to start and stop

1. When the ambient temperature is $<5^{\circ}\text{C}$ or $>35^{\circ}\text{C}$, or when the temperature sensor fails, the compressor does not work.
2. When NTC detects the temperature of the evaporator coil lower than -2°C , the machine will begin defrosting after dehumidifying for 30 min.
3. During defrosting, the compressor does not work, but the fan still works.

In case of the following conditions, please confirm which fault it is according to the following list before consulting customer service: **boglvrcustomer@outlook.com**

NOTE:

1. If there are other faults, please contact the manufacturer or the point of purchase for inspection and repair. Do not disassemble the machine by yourself.
2. Contact Customer Service if the dehumidifier operates abnormally or does not operate, and the solutions are not useful.

FAULT DESCRIPTION	SOLUTION
Still work, the LED displays "E1" and flashes, and the functions of the buttons are normal.	Re-power on and the fault disappears (Under this fault, the compressor runs for 30 minutes and defrosts for 10 minutes.)
Stop working, the LED displays "E2" and flashes. Pressing any button at this time has no effect.	Please contact us at: boglvrcustomer@outlook.com
Stop working, the LED displays "L3" and flashes. Pressing any Button at this time has no effect.	Re-power on and the fault disappears
Stop working, the LED displays "L4" and flashes. Pressing any Button at this time has no effect.	Re-power on and the fault disappears
Automatic Defrost, the LED displays "H5".	The defrost is over and the fault disappears.
Ambient humidity $\geq 90\%$, the LED displays "HI".	The humidity returns to below 90% and returns to normal.

10 WARRANTY INFORMATION

TERMS & POLICY

We warrant all products to be of the highest quality in material, craftsmanship, and service, effective from the date of purchase to the end of the warranty period. We will replace any product found to be defective due to manufacturer flaws, based on eligibility. Refunds are available within the first 30 days of purchase. Refunds are only available to the original purchaser of the product. This warranty extends only to personal use and does not extend to any product that has been used for commercial, rental, or any other use for which the product is not intended. There are no warranties other than the warranties expressly set forth with each product; the warranty is non-transferable. We are not responsible in any way for any damages, losses, or inconveniences caused by equipment failure or by user negligence, abuse, or use noncompliant with the user manual or any additional safety or use warnings included in the product packaging and manual.

THIS WARRANTY DOES NOT APPLY TO THE FOLLOWING:

- Damage in the return transit.
- Improper or inadequate maintenance.
- Unsupervised use by children under 18 years of age.
- Damage resulted from natural disaster, fire, poison and moisture.
- Damage due to abuse, accident, alteration, misuse, tampering, or vandalism.
- 2nd-hand purchase or purchase from a non-authorized seller/distributor.

We assume no liability for damage caused by the use of the product other than for its intended use or as instructed in the user manual. Some states do not allow this exclusion or limitation of incidental or consequential losses, so the foregoing disclaimer may not apply to you. This warranty gives you specific legal rights and you may also have other rights which may vary from state to state.

EXTEND YOUR WARRANTY BY 1 YEAR

1. Register your product by contacting the email: boglvrcustomer@outlook.com to extend your 1-year warranty.
2. Please fill out all required fields and include your order ID, place of purchase and SN code (on the nameplate located at the side of the product)

A Letter to Our Customer

Dear Customer,

Thank you very much for choosing our dehumidifier!
We truly appreciate your support and trust in our brand.

If you're enjoying the product, we'd be grateful if you could share it with your family and friends. Your recommendation means the world to us.

Should you have any questions or encounter any issues during use, please don't hesitate to contact our after-sales team at boglvrcustomer@outlook.com — we're here to help! We promise to respond within 12 hours and provide a satisfactory solution.

Thank you again for your support!

Warm regards,
The Boglvr Team



Email: boglvrcustomer@outlook.com

