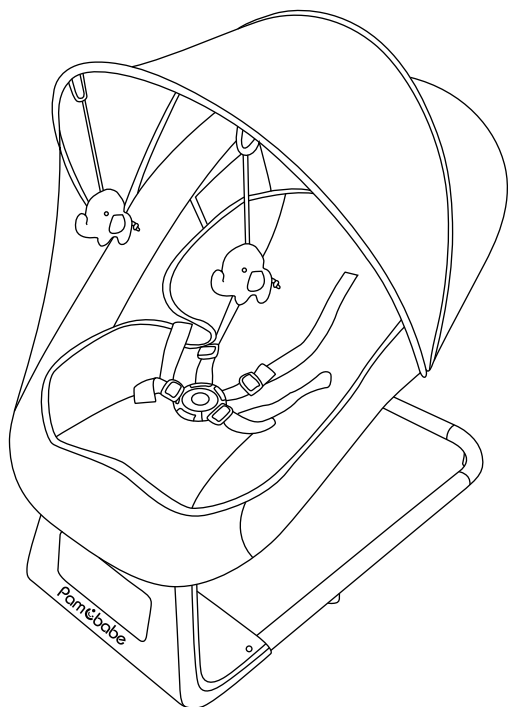


Pam&babe



**Luxury Electric Baby Swing
Model:KDD-RS003DA**

**IMPORTANT! READ CAREFULLY AND KEEP
FOR FUTURE REFERENCE**

Cradle Swing

WARNING:

FALL HAZARD: Infants have suffered head injuries falling from swings.

- **STOP** using product when infant begins to push up on hands and knees (approximately 5 months)
- **ALWAYS** provide the supervision necessary for the continued safety of your child. When used for swinging, never leave child unattended.

SUFFOCATION HAZARD:

Infants have suffocated:

- on pillows, comforters and extra padding
- in gaps between a wrong-size mattress, or extra padding and product sides
- **NEVER** add soft bedding or padding.
- Please take attention that changes or modification not expressly approved by the party responsible for compliance could void the user's authority to operate the equipment.
- Use **ONLY** mattress provided by manufacturer. This device complies with Part 15 of the FCC Rules.

Operation is subject to the following two conditions:

- (1) This device may not cause harmful interference, and
- (2) This device must accept any interference received, including interference that may cause undesired operation.

CAN ICES-3(B)/NMB-3 (B)

Toys Bar

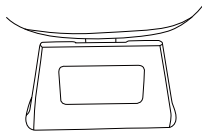
WARNING:

Possible entanglement injury. Keep out of baby's reach.

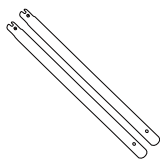
Remove mobile from from crib or playpen when baby begins to push up on hands and knees.

- A crib mobile is intended for visual stimulation and is not intended to be grasped by the child.
- If attached to the crib or playpen, remove when baby begins to push up on hands and knees. If so designed, mount on wall or ceiling clearly out of a standing baby's reach.
- If mounted on a wall or ceiling, install the mobile clearly out of a standing baby's reach.
- Always attach all provided fasteners (strings, straps, clamps, etc.) tightly to a crib or playpen according to the instructions. Check frequently.
- Do not add additional strings or straps to attach to a crib or playpen.

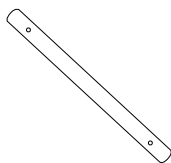
COMPONENTS AND PARTS



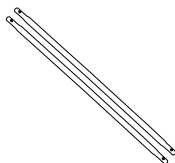
BASE x1



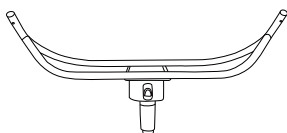
TUBE x2



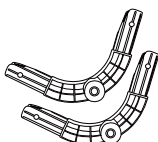
TUBE x1



TUBE x2



BOTTOM TUBE x1



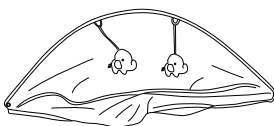
TUBE PLASTIC x2



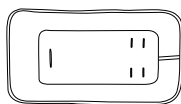
TOP TUBE x1



SEAT FABRIC x1



NET x1



MATTRESS x1



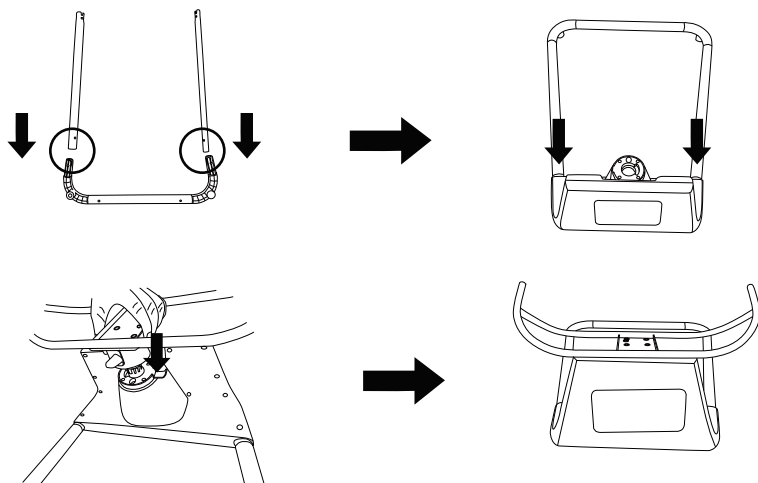
CHARGING CABLE x1



REMOTE CONTROL x1

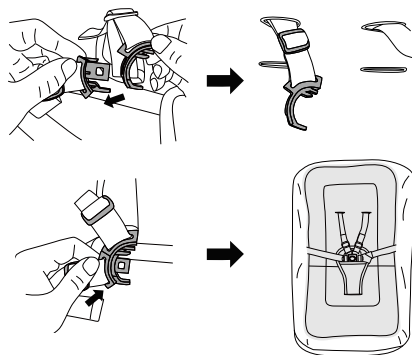
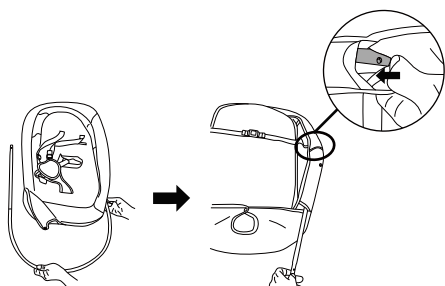
INSTALLATION PROCEDURE

BASE INSTALLATION

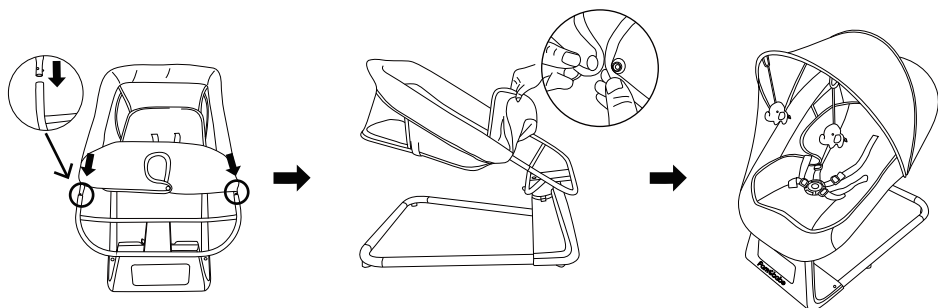


FABRIC INSTALLATION

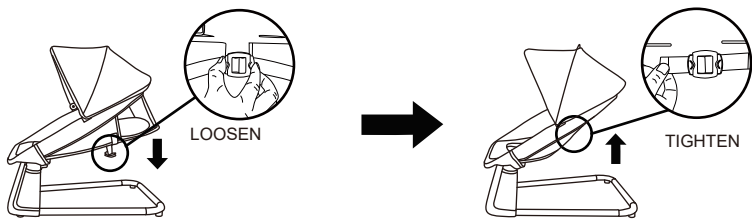
MATTRESS INSTALLATION



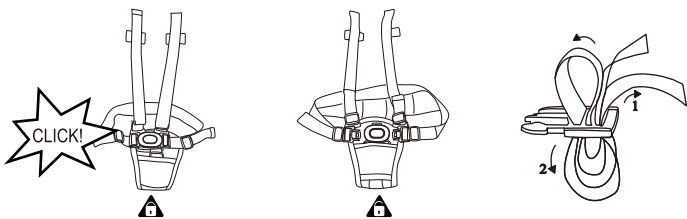
FABRIC AND BASE INSTALLATION



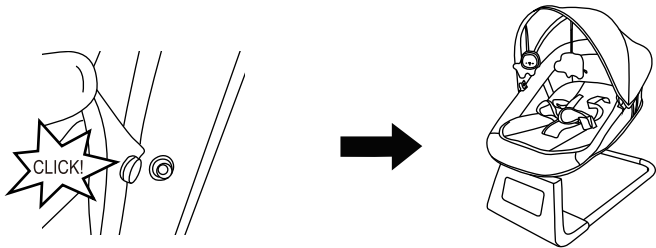
BACKREST ADJUSTMENT



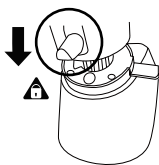
FIVE-POINT HARNESS



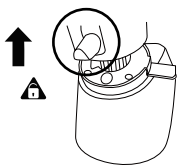
CANOPY INSTALLATION



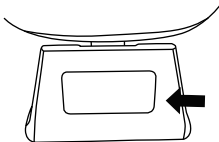
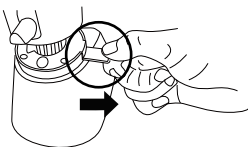
SWING LOCK



SWING UNLOCK



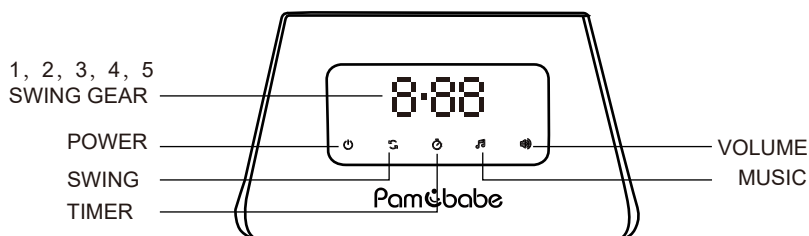
REMOVE BASE



⚠ WARNING:

Remove the protective film on the screen before use to avoid choking hazards.

ELECTRONIC PART DESCRIPTION



POWER BUTTON

1. POWER BUTTON

Power on key LED long bright, short press the power switch, the power gear display and timing display flow after a circle of light will display -(three bars), then shortpress the power switch, you can turn off all functions in the work, the power key light is long on, and the other lights are all off. --(three bars)display.

2.TIMER BUTTON

Touch the "Timer Button" to select a time, the selected timer indicator light up. The 3 timing stalls: 8 minutes, 15 minutes, 30 minutes. Stop timing with 4th touch , all timing indicators turn off. Circulable operation.

3.SWING BUTTON

Touch "Swing Button" to select a swing gear, the selected swing gear indicator light up. There are 5 swing gears. Stop with the 6th touch and all swing gear indicators turn off.

The indicator is -(one bar) At this time, the gear key light is off and then short press to start the swing selection after turning off the swing.

One gear and the corresponding LED light, the digital displayscreen shows the corresponding gear number.

This cycle can be operated.

4.MUSIC BUTTON

Touch the "Music Button" to play music, touch again to pause the music, then touch again to play next music (11 songs built in). If entering the Bluetooth mode, prioritize the Bluetooth music on the phone to play, Bluetooth are connected, there will be a drop thud prompt sound.

5. VOLUME and MUSIC

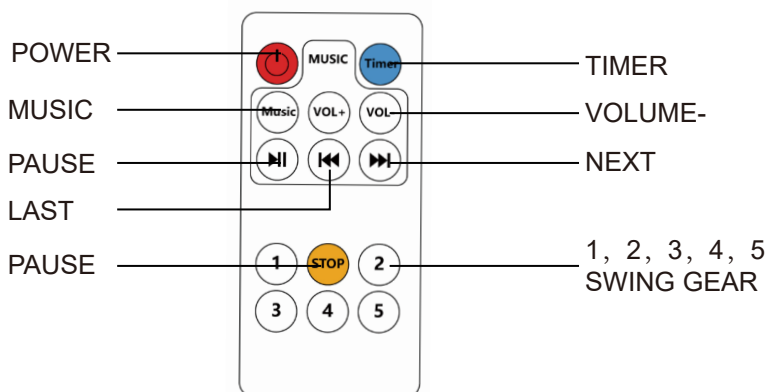
Touch the "Volume Button" to turn the volume up or down. There are five gears for sound increase and decrease). Circulable operation.

Note: Just open the mobile phone Bluetooth function to search COOLBABY RS003 name pairing to use Bluetooth to play music on your phone. Power supply mode: Two models

1.The product is equipped with a USB-DC power cord, which can be connected to a mobile phone charging power source;

2.The product is equipped with a USB-DC power cord, which can be connected to a portable portable power source.

REMOTE CONTROL OPERATION



KEY INSTRUCTION

1.Power Button

Press the power button to turn on/off

2.Timer Button

Press the timer button to select a set time.

Press the timer button to set the display time.

Press this button continuously to switch the timer lamp gear.

① Device timing indicator 1: 8 minutes

② Device timing indicator 2: 15 minutes

③ Device timing indicator 3: 30 minutes

3.Music Key

Press the music key to play music.

4.VOL+ Volume Increase Key

Press the VOL+ key to increase the volume.

5.VOL- Volume Reduction Key

Press the VOL- key to reduce the volume.

6.Music Pause Key

Press the pause key to play and pause music.

7. Previous Key

Press the previous song key to play the previous song.

8. Next Key

Press the next key to play the next music.

9.Swing Key

Press the key once to select Swing 1 (device display 1)

Press the key twice to select Swing 2 (Device display 2)

Press the key 3 times to select Swing 3 (device display 3)

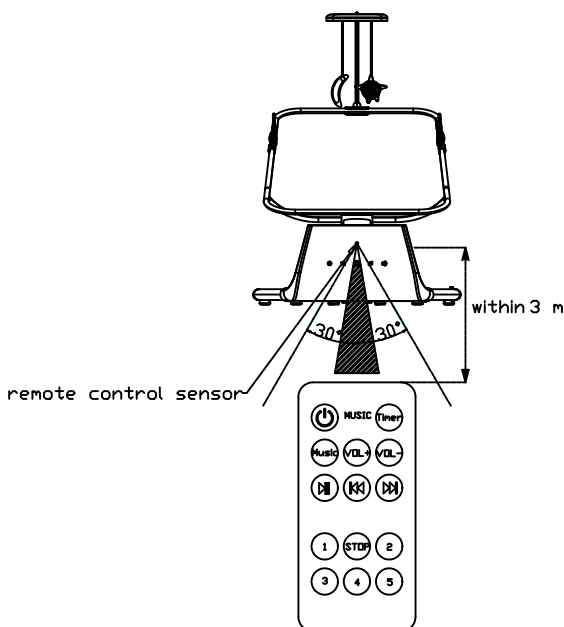
Press the key 4 times to select Swing 4 (device display 4)

Press the key 5 times to select Swing 5 (device display 5)

10. The Stop Key

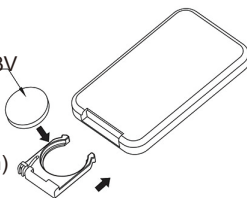
Press the stop key to stop the swing.

11.Remote Control Battery Packing Method



Button Battery CR2025.3V
(INCLUDE)

(You need to remove the
insulating plastic sheet
before you can power on)



MAINTENANCE & CLEANING

Please make a routine check to make sure that electric rocking chair is secure.

Please use the soft and dry cloth or sponge to clean the electric rocking chair. Do not use alkaline or acidic water to wash the bassinet to avoid the water corrode the iron pipes or hardware.

Do not use or keep the bassinet in a wet, cold or high temperature environment for extended periods of time. Please use a brush or other clean tools to clean any splotches on the fabric.