

105mm

70mm

70mm

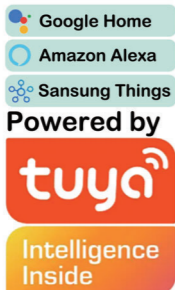
70mm

70mm

70mm

## Music Light

user manual



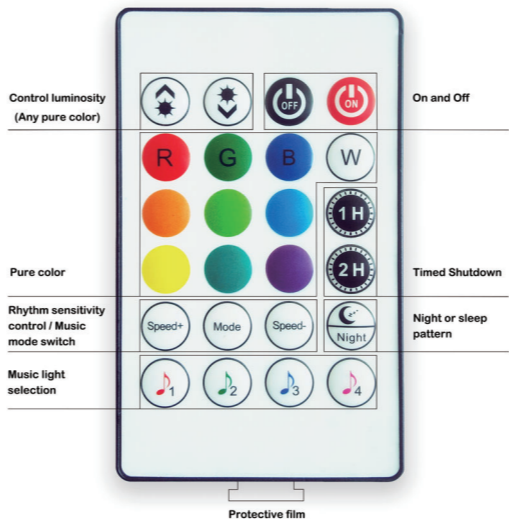
Please read this manual carefully before using the product, and keep it for records properly.



### Technical Parameters

Model	Music Light
Product size	300*30*30MM
Base size	90*90*45MM
Inout voltage	DC 5V
Working voltage	DC 5V 1A
Lamp power	1W
LED type	RGBIC 5050
Shell body material	ABS

### Remote Control Description



Dear friends: You need to unplug the protective film on the rear of the remote to use the remote control function (the remote is pointed at the front of the Music light). When the battery is exhausted, you need to open the battery compartment at the rear of the remote control and replace the battery.

### Key Control

Short press, Switch the "Music Rhythm Ambient light" scene.



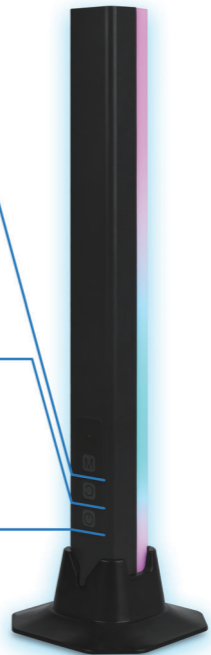
Toggle the "Color Ambient Light" scene.



Short press, "Turn on"/ "Turn off";



Hold down for 8 seconds, the red light blinks, and wait for the APP to connect.



### Smart Life APP Control

1. Download and install the "Smart Life" APP from Google Play or the APP store. You can also scan the QR code to download and install.

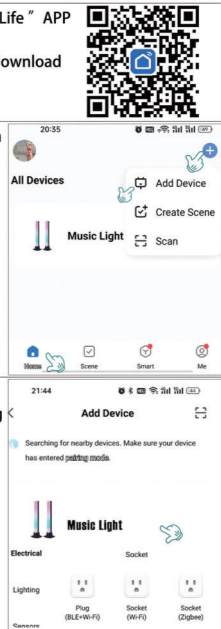


2. Open the "Music Light" connection mode. ( Press and hold for 8 seconds, release the button after the red light blinks, and enter the APP connection mode . )

Open the "Smart Life" APP, register an account and log in.

Select: HOME → Add-set → Add device

3. The APP enters the automatic search and asks you to confirm adding "Music Light". When pairing is complete, the product changes from flashing red light to colored light. You can click "Music Light" through the "Home" interface to carry out rich Settings and controls. I wish you a happy hug forever.



Dear friends: After the product opens the connection mode, please complete the APP pairing within three minutes, otherwise it will automatically enter the color mode and need to reopen the product connection mode.

70mm

70mm

70mm

70mm

70mm

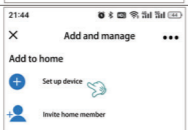
### Google Home Control

1. You need to have the "Tuya Gateway" and complete the configuration to connect the "Music Light" in parallel through the "Smart Life" APP.

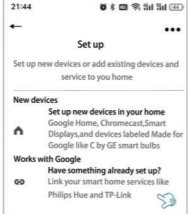
2. Open the "Google Home" APP. Click the + icon in the top left corner



3. Click set up device

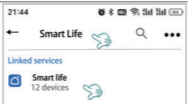


4. Click Works with Google



### Google Home Control

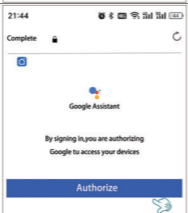
5. Enter search Smart Life, Click "Smart Life"



6. Enter your smart life account and password and click on Link Now.



7. Click Authorize. Authorization completed

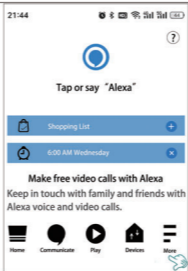


Dear friends: After the authorization is completed, Google Home automatically searches the "Music Light" under the account, you can set and control your "Music Light" in Google Home, I wish you a happy hug every day, thank you!

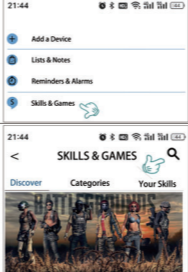
### Amazon Alexa Control

1. You need to have the "Tuya Gateway" and complete the configuration to connect the "Music Light" in parallel through the "Smart Life" APP.

2. Open the "Amazon Alexa" APP. Click Devices. The device list page is displayed



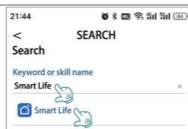
3. Click Skills & Games. Jump to the "Skill" store



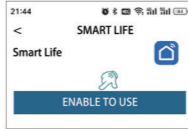
4. Click the search icon in the top right

### Amazon Alexa Control

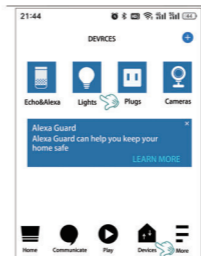
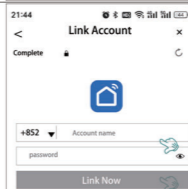
5. Enter the Skill name : Smart Life. Tap : Smart Life



6. Tap : ENABLE TO USE. The account login page is displayed



7. Enter your smart life account and password and click on Link Now.

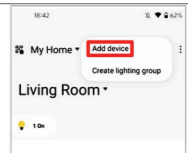


8. After you have tied your account, You can click "Devices" and select "Lights" to enter the control page and control your "Music Light". You can also click "More", select "Routines", go to the control page, and set your custom control plan through "Create Routine". Just go to "Smart Home" in the action option and select your "Music Light". I wish you a happy hug every day, thank you!

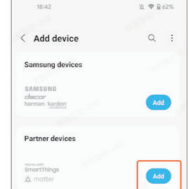
### Samsung Things Control

1. You need "Tuya Gateway" certified with "Matter", and complete the configuration to connect the "Music Light" in parallel through the "Smart Life" APP.

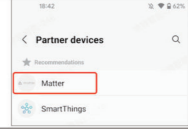
2. Open the SmartThings App homepage, click the +. Tap : Add device



3. Select: Smart things. TAP : Add



4. TAP : Matter, Enter the interface, start scanning QR code, add "Tuya Gateway".



Dear friends: After you have finished adding the configuration, you can customize the "Music Light" according to your preferences. However, support for Samsung smart devices requires Samsung to be open to service in your area. I wish you a happy hug every day, thank you!

105mm

**FCC Warning:**

This equipment has been tested and found to comply with the limits for a Class B digital device, pursuant to part 15 of the FCC Rules. These limits are designed to provide reasonable protection against harmful interference in a residential installation. This equipment generates, uses and can radiate radio frequency energy and, if not installed and used in accordance with the instructions, may cause harmful interference to radio communications. However, there is no guarantee that interference will not occur in a particular installation. If this equipment does cause harmful interference to radio or television reception, which can be determined by turning the equipment off and on, the user is encouraged to try to correct the interference by one or more of the following measures:

- Reorient or relocate the receiving antenna.
- Increase the separation between the equipment and receiver.
- Connect the equipment into an outlet on a circuit different from that to which the receiver is connected.
- Consult the dealer or an experienced radio/TV technician for help.

**Caution:** Any changes or modifications to this device not explicitly approved by manufacturer could void your authority to operate this equipment.

This device complies with part 15 of the FCC Rules. Operation is subject to the following two conditions:

(1) This device may not cause harmful interference, and (2) this device must accept any interference received, including interference that may cause undesired operation.

This equipment complies with FCC radiation exposure limits set forth for an uncontrolled environment. This equipment should be installed and operated with minimum distance 0cm between the radiator and your body.