

02

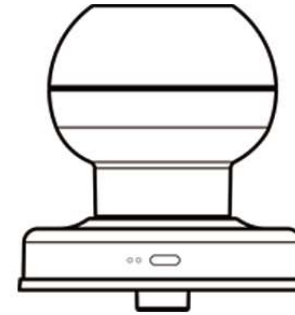
Smart Door Knobs



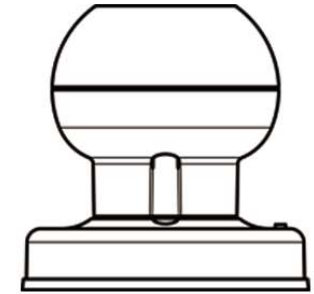
Installation Guide

IMPORTANT: Read the instructions carefully before operating the appliance and keep them for future reference.

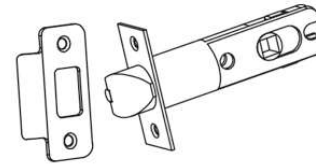
WHAT IS INCLUDED



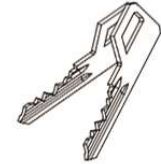
Front Knob*1



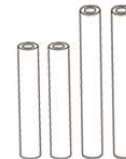
Back Knob*1



Latch and strike*1



KEY*2



Standoffs*4

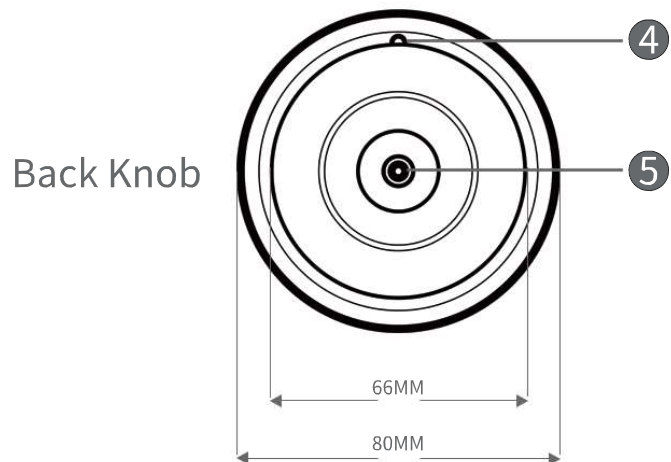
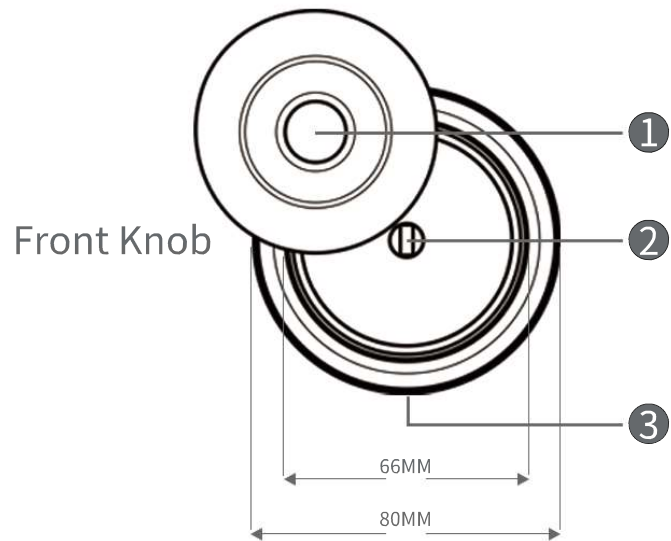


Screw A*4



Screw B*4

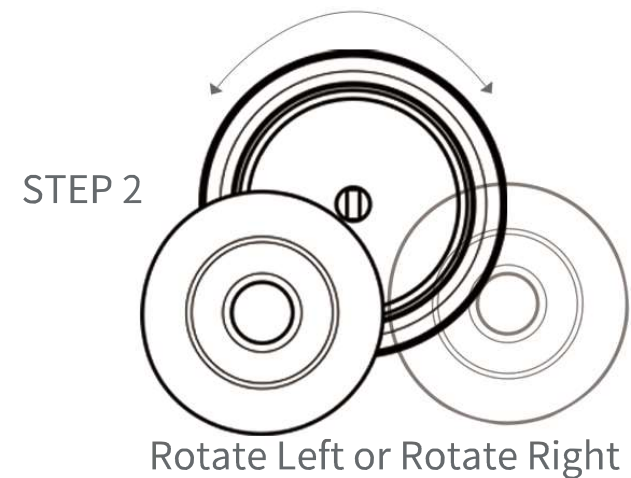
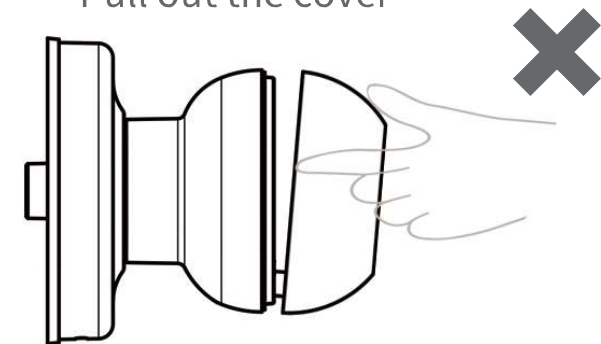
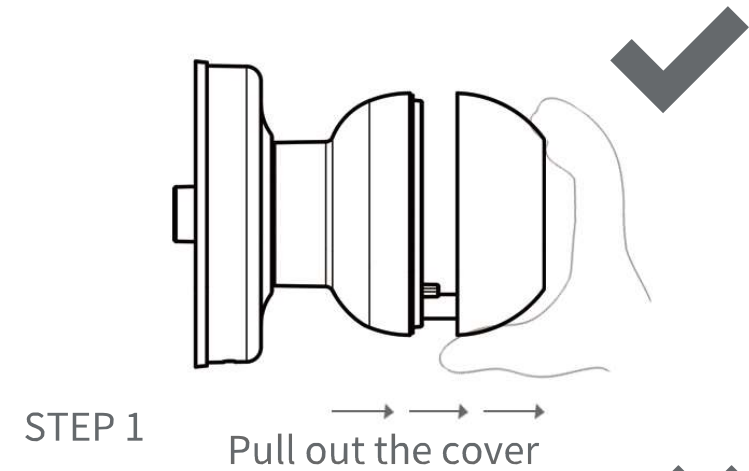
PRODUCT DIMENSIONS



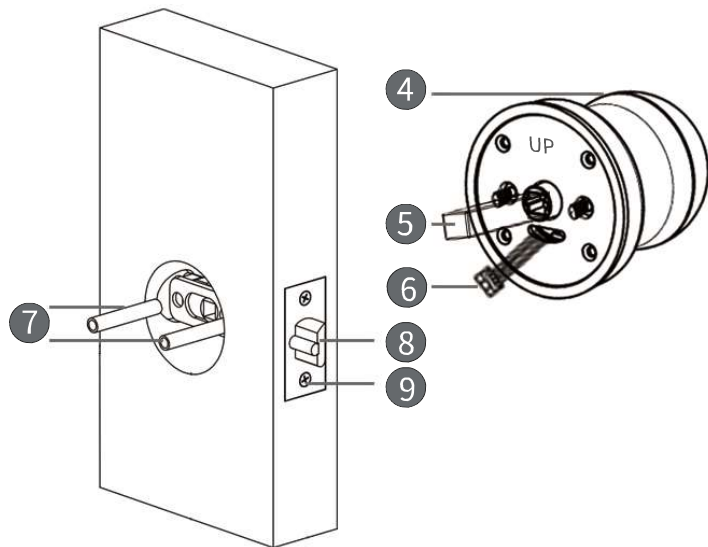
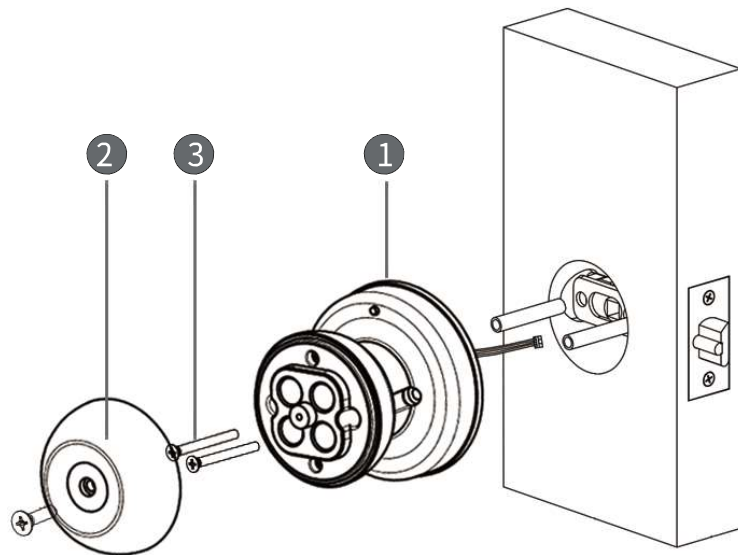
①	Fingerprint reader	②	Keyhole
③	Emergency port	④	Rset button
⑤	Battery cover		

Tips: Green light means Unlock the door ; Blue light means add fingerprint ; red light means failed.

Open the emergency key port

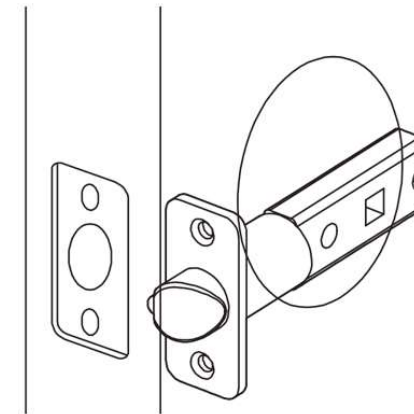


EXPLOSIVE VIEW

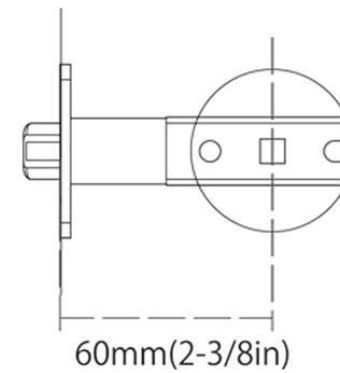


1	Back knob	2	Battery cover	3	Screw A
4	Front knob	5	Spindle	6	Cable
7	Bushings	8	Latch	9	Screw B

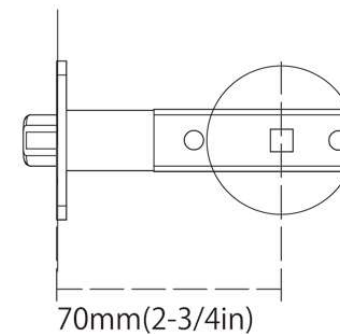
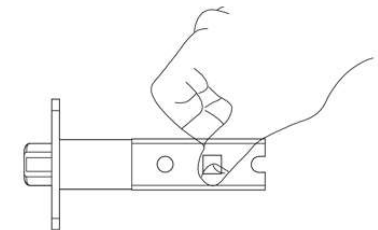
ADJUST LATCH



Hold the latch in front of the door hole with the latch face flush against the door edge.

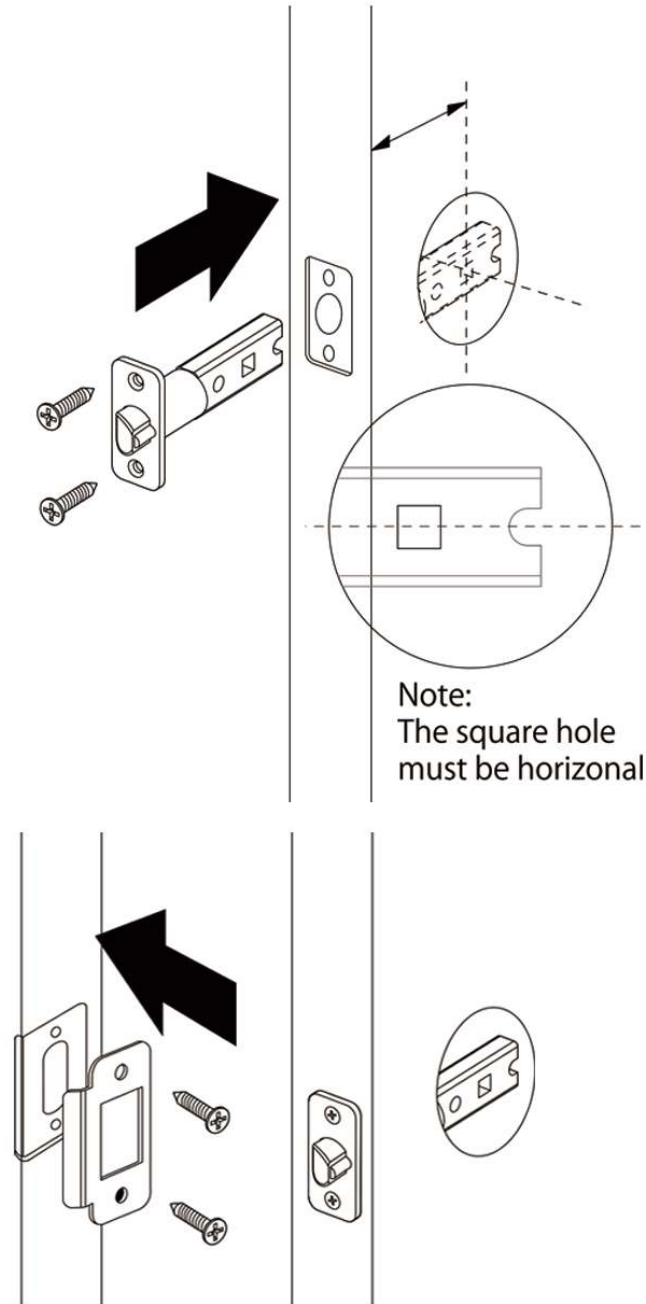


If the latch holes are centered in the door hole, no adjustment is required.

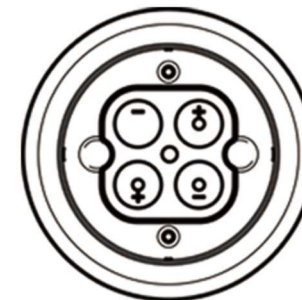
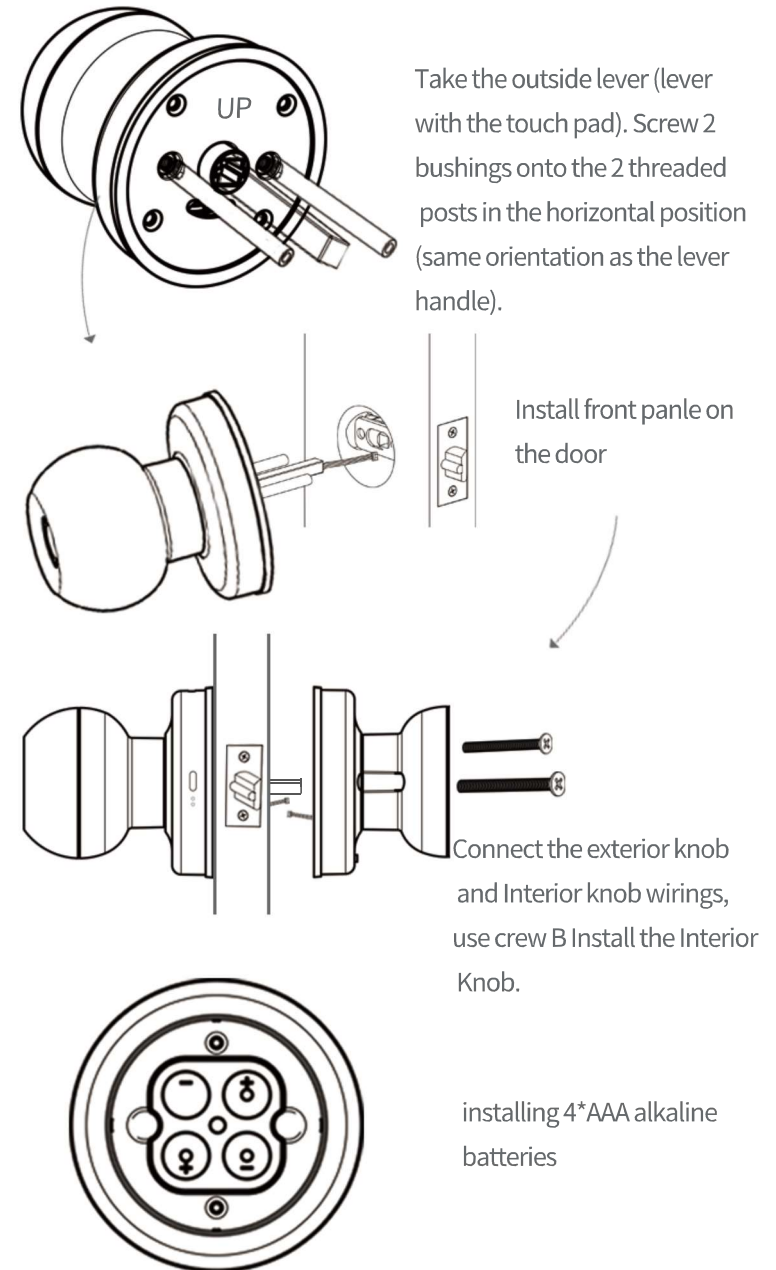


If the latch holes are NOT centered, adjust latch.

INSTALL LATCH



INSTALLING KNOB

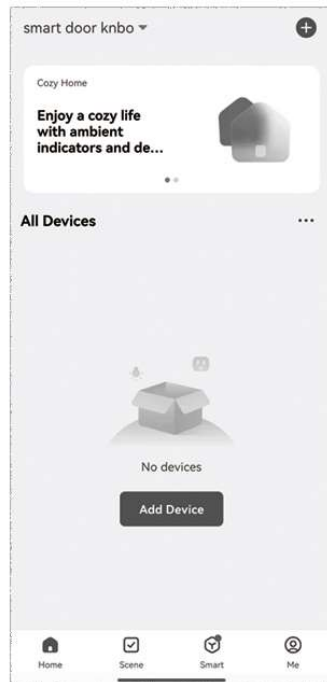


Note: DO NOT USE RECHARGEABLE BATTERIES

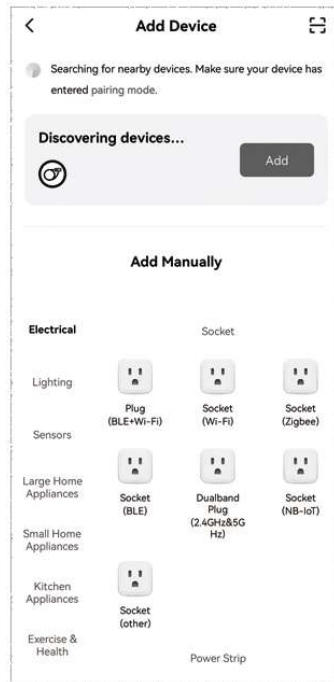
ADDING DEVICE



Scan the QR code to download Tuya app.

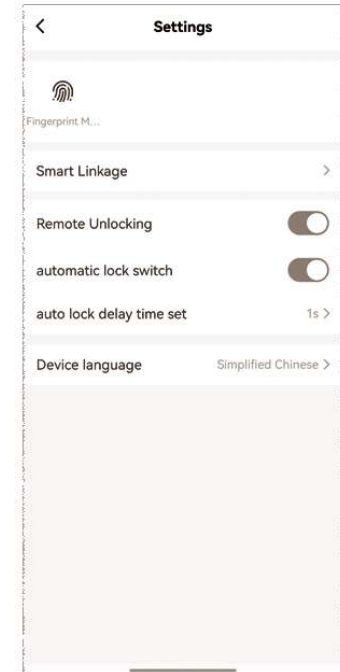
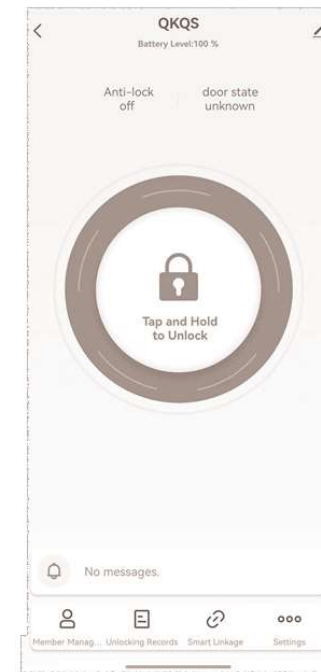


Top add device button

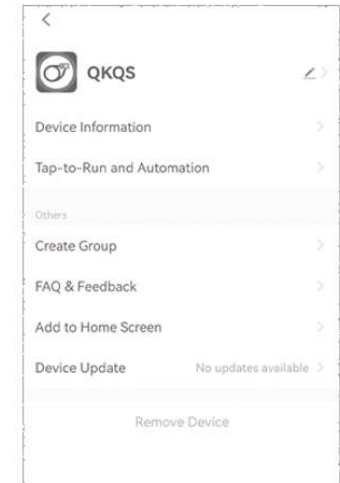


Top "Add" button

FUNCTION SETTINGS



RESTORE FACTORY SETTING



This device complies with part 15 of the FCC Rules. Operation is subject to the following two conditions: (1) This device may not cause harmful interference, and (2) this device must accept any interference received, including interference that may cause undesired operation.

Any Changes or modifications not expressly approved by the party responsible for compliance could void the user's authority to operate the equipment.

Note: This equipment has been tested and found to comply with the limits for a Class B digital device, pursuant to part 15 of the FCC Rules. These limits are designed to provide reasonable protection against harmful interference in a residential installation. This equipment generates uses and can radiate radio frequency energy and, if not installed and used in accordance with the instructions, may cause harmful interference to radio communications. However, there is no guarantee that interference will not occur in a particular installation. If this equipment does cause harmful interference to radio or television reception, which can be determined by turning the equipment off and on, the user is encouraged to try to correct the interference by one or more of the following measures:

- Reorient or relocate the receiving antenna.
- Increase the separation between the equipment and receiver.
- Connect the equipment into an outlet on a circuit different from that to which the receiver is connected.
- Consult the dealer or an experienced radio/TV technician for help.

RF warning for Portable device: The device has been evaluated to meet general RF exposure requirement. The device can be used in portable exposure condition without restriction.