

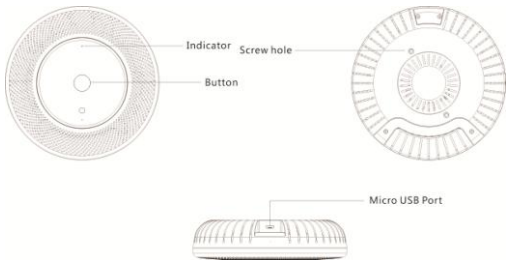
# **PM2.5 Detector**

User Manual

( Ver.1.0 )

## ■ Introduction

This device can detect PM2.5 , temperature and humidity in real time.It can be connected via Wi-Fi and used with the "Tuya Smart" APP on the mobile phone. The test data is displayed on the "Tuya Smart" APP.



## ■ **“Tuya Smart” APP Quick Guide**

### 1. Scan the below

QR code or Search "Tuya Smart" in the APP Store or Google Play.



iOS 9.0 or above / Android 6.0 or above

### 2. Connect to the power supply

Please use the 5V/1A adapter in the packaging box to power the device, the indicator light flashes when power on.

### 3. Connect to Wi-Fi

(1) Open the smart phone **Wi-Fi and Bluetooth**.

(2) Long press the button on the device for 3 seconds. At that time, the indicator light flashes, the device is ready to connect with Wi-Fi.

(3) Open the "Tuya Smart" APP, add a device through the upper right corner ⊕. Then select "Add Manually" [Sensors]→Wi Fi or select "Auto Scan", and then continue the operation according to the prompts.

- To make the connection smoothly, please put the phone as close as possible to the device.

(4) When the network connection is successful and the device is in normal working, the indicator light is always on.

(5) If the network connection fails, please press the button for 3 seconds, try to do the above step (3) again.

#### 4. The APP features

- Home Management and Room Management.
- View real-time test data and historical line chart. (To ensure continuous historical data, please keep the device power on at all times.)
- Set the measurement interval.

### ■ Notes

1. The tested values of this product may differ from those measured and published by other organizations due to the different testing environment and methods.
2. This product has only detection function, and it cannot mitigate or avoid the damage caused or possible caused by air quality to the human body.

3. The measured values of this product are used for consumers reference only and cannot replace the test report of the air quality testing agency or be used as the legal air quality testing results.

## ■ Parameters

Dimension: 140\*140\*36mm

Input: 5V/1A

Temperature detection range: 0°C~60°C

PM2.5 detection range: 0-999 $\mu\text{g}/\text{m}^3$

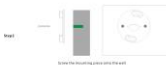
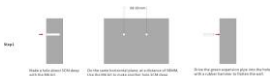
Work environment: 0°C ~ 60°C ; 10% ~ 90%

Storage environment: -20°C ~ 60°C; 10% ~ 90%

Connect type: Wi-Fi, Bluetooth

System support: iOS 9.0 or above/ Android 6.0 or above

# How to Fix



## FCC WARNING

This device complies with part 15 of the FCC Rules. Operation is subject to the following two conditions: (1) this device may not cause harmful interference, and (2) this device must accept any interference received, including interference that may cause undesired operation. Any changes or modifications not expressly approved by the party responsible for compliance could void the user's authority to operate the equipment.

NOTE: This equipment has been tested and found to comply with the limits for a Class B digital device, pursuant to Part 15 of the FCC Rules. These limits are designed to provide reasonable protection against harmful interference in a residential installation. This equipment generates, uses and can radiate radio frequency energy and, if not installed and used in accordance with the instructions, may cause harmful interference to radio communications.

However, there is no guarantee that interference will not occur in a particular installation. If this equipment does cause harmful interference to radio or television reception, which can be determined by turning the equipment off and on, the user is encouraged to try to correct the interference by one or more of the following measures:

- Reorient or relocate the receiving antenna.
- Increase the separation between the equipment and receiver.
- Connect the equipment into an outlet on a circuit different from that to which the receiver is connected.
- Consult the dealer or an experienced radio/TV technician for help.

To maintain compliance with FCC's RF Exposure guidelines, This equipment should be installed and operated with minimum 20cm distance between the radiator and your body: Use only the supplied antenna.