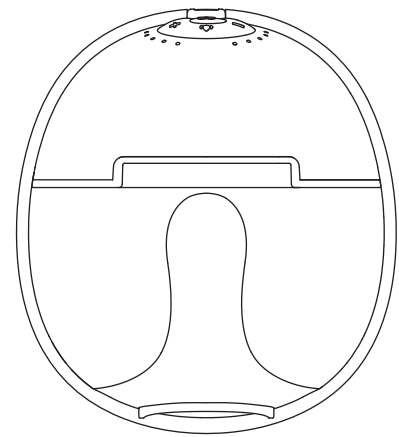


Wearable Breast Pump

W2 USER MANUAL



Read this user manual before using your wearable breast pump, and keep the user manual for further reference.

Product description

The use of wearable breast pump W2 has some medical effects on the breast.

First, the breast pump can simulate the sucking pattern of an infant, assist in sucking the breast, promote pituitary secretion of prolactin, and stimulate the secretion of milk from the breast to increase milk production, which can meet the needs of infants.

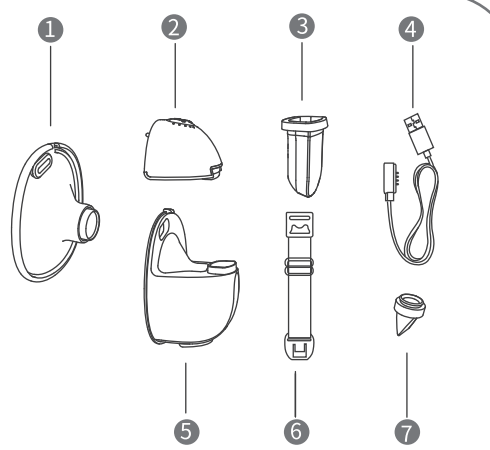
Second, the breast pump can promote the contraction of the breast epithelium to promote the ejection of milk from the breast ducts, ensure the emptying of the breast, and alleviate the milk swelling of the mother. In addition, repeated sucking with the breast pump can promote the suction of excess milk from the breast ducts, which can prevent the occurrence of acute mastitis.

Third, using breast pump can improve the rate of exclusive breastfeeding and increase the confidence of mothers in breastfeeding, which is beneficial to both mothers and infants.

Fourth, this product is suitable for personal use in the family and is not recommended for use as an auxiliary tool by medical institutions.

01

Product structure diagram

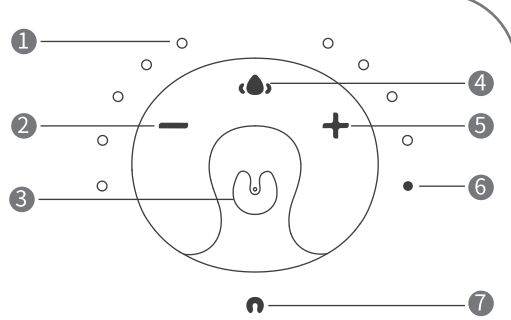


Parts list

- | | |
|----------------------|---------------------------|
| 1 Flange | 2 Pump Motor |
| 3 Silicone Diaphragm | 4 Magnetic Charging Cable |
| 5 Milk Collector | 6 Bra Adjustment Buckle |
| 7 Valve | |

02

Description of led display and button function



- 9 lights show 9 expression levels (from left to right)
- Level down button
- Power button/ Mode switch button
- Hot compress switch button
- Level up button
- Hot compress display
- Power display

03

TUYA smart APP display button function



- | | |
|----------------------------------|--------------------------|
| 1 Power on button | 6 Time display |
| 2 Expression mode | 7 Power display |
| 3 Level button (Expression mode) | 8 Setting operation time |
| 4 Level button (Massage mode) | 9 Power off button |
| 5 Hot compress switch button | 10 Massage button |

04

Assembly

To assemble the pump, follow the steps below.

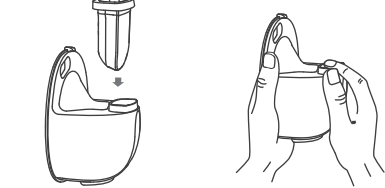
CAUTIONS

- Make sure that you clean the pump as instructed in this user manual.
- Make sure that you assemble the pump correctly as instructed in this user manual.
- To avoid leakage, remove the residue around the rim before assembling.
- Wash your hands thoroughly before you assemble cleaned components.

1. Install the valve to the milk collector, pay attention to the direction of installation.

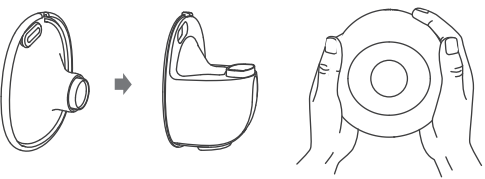


2. Put the silicone diaphragm into the milk collector, and press it with your hands to make the edges fasten tightly to ensure a perfect seal.

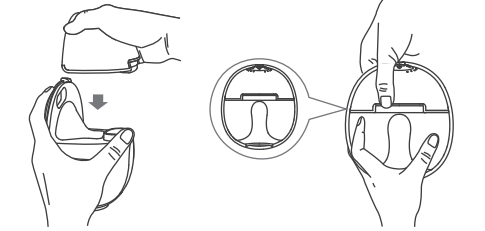


05

3. To install the flange on milk collector, make sure to align the diversion groove on the flange with the backflow groove on the milk collector. Magnetic contact on the flange is aligned with the slot of the magnetic contact on the milk collector, and then press the edges with both hands to ensure the seal is in place.



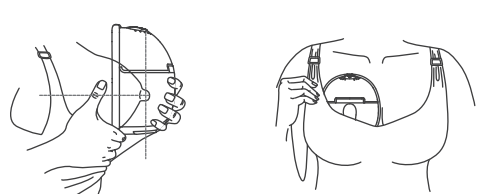
4. Install the main body of the breast pump on the milk collector, align the notch under the main body with the silicone diaphragm, and assemble it downward to fit the milk collector to ensure a complete seal.



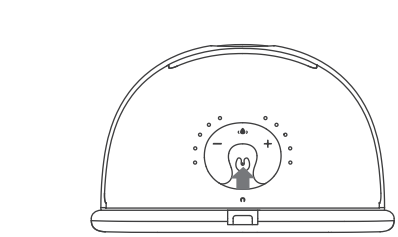
06

To begin pumping

1 Press the flange firmly against the breast, leave no gaps and make sure your nipples are centered. Keep it upright. Be careful not to distort the position of the product and the chest, otherwise the breast pump will not have suction.

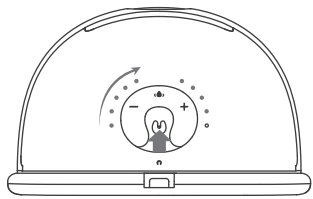


2 Long press the power button to start the breast pump.

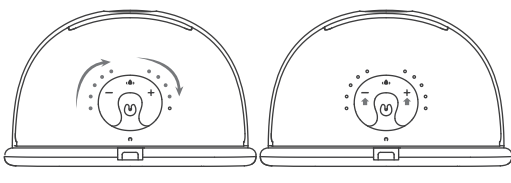


07

3 Short press the " " button after the breast pump starts to switch modes. By pressing this button, there are two modes (expression mode, massage mode) for you to choose. The indicator light flashes when in massage mode, and is always on when in expression mode.

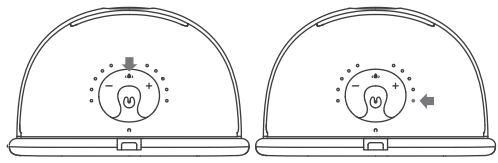


4 There are 9 levels in each mode. Each level will have a corresponding level display, 9 lights show 9 expression levels (Increase from left to right level). You can choose the suction that makes you comfortable by short pressing the "+" level up and "-" level down button.

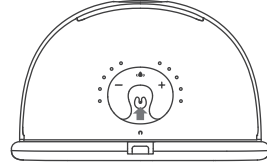


08

5 Short press " " to turn on/off the hot compress function. When the hot compress function is turned on and working, the hot compress indicator light is on (flashing indicates heating, constant light indicates keeping warm). If the hot compress indicator light is not on at this time, please check whether the magnetic contact of flange is in good contact with the pump motor. When the hot compress function is finished, short press " " , the hot compress indicator does not light up, which means the hot compress function is off.



6 Long press the power button " " to turn off the breast pump.

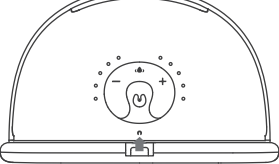


Tips: 1. This model has built-in a memory function, when you turn on the machine again, the machine automatically enters and up shifts to the working mode and suction level you used last time. During operation, short press the mode switch button will change to the memory level of a different mode.
2. The breast pump will automatically stop after 20 minutes of work.

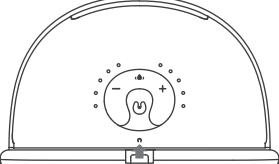
09

LED battery level display

1. When the breast pump is in use, the power indicator green light is always on to indicate that the power is sufficient; when the power is low, the power indicator red light is always on, please charge it in time.



2. The breast pump does not work when charging with a charger. At this time, the display interface is only the power display, the red light flash when charging, the green light flash when it is almost full, and the green light is always on when it is full.



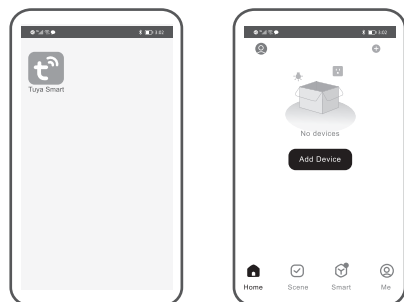
3. After each use, press the power button to check the battery indicator. If low battery, please charge with DC5V 2A charger.



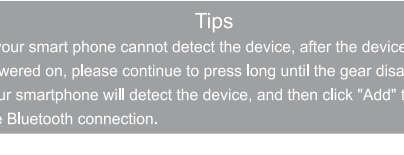
10

How to match the breast pump motor with TUYA APP in mobile phone

1. Download and install TUYA Smart APP on your cell phone, log in to TUYA Smart APP, the breast pump must be put together with your cell phone in order to connect the host with APP.



2. Long press " " icon button to turn on the device, when Figure 2 appears, it means TUYA smart APP has detected the device; when it keeps showing Figure 3, please click "Add Device" to find the device automatically. When the device is searched, Figure 4 will appear click "Add" to enter the Bluetooth connection.



11

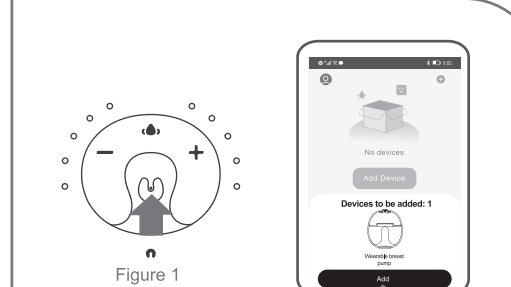


Figure 1

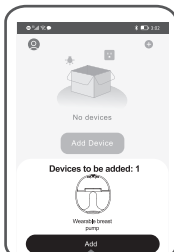


Figure 2



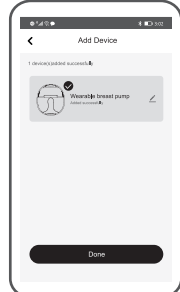
Figure 3



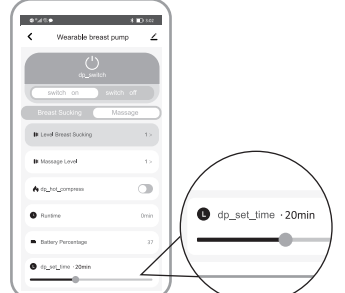
Figure 4

12

3. When the cell phone appears in Figure 1, it means that the device and TUYA smart APP Bluetooth connection is successful, click "Done" will enter Figure 2 interface, at this time, you can operate the cell phone screen interface to control the function of the breast pump.



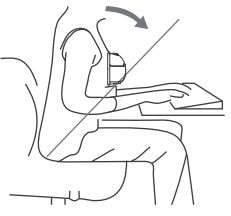
4. You can click on the shutdown time in the picture to control the working time of the breast pump according to your personal needs.



13

Breastfeeding sitting position

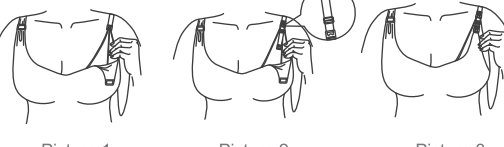
Relax and sit in a comfortable chair, lean slightly forward (use a cushion for back support). Make sure your body is in the same line as the breast pump



Sitting posture

Instructions for bra adjusting buckle

Adjust the length of bra straps, make suction more comfortable. One end of the bra adjustment buckle hung on the inside buckle of nursing bra. The length of the bra buckle on the other end of the bra adjustment buckle.



Picture 1

Picture 2

Picture 3

14

Troubleshoot Guide

Insufficient suction

- Test the suction power:** Separate the main body from the cup, put the main body in the palm of your hand, and check whether there is suction in the palm of your hand. If there is suction, the machine is not the problem. Otherwise, the problem lies with the main unit.
- Check for installation issues:** (1). To ensure proper assembly and a complete seal, follow the instructions provided to reassemble the fitting correctly. (2). Wash and dry the flange, look for damage, and see if disinfection has altered its appearance. (3). Verify whether the installation method is incorrect and whether the duckbill valve is damaged.
- To ensure the flange and breast are properly fitted together during breastfeeding, follow the instructions for correct sitting posture provided.

Suction is too small

- After ensuring that the new breast pump is functioning correctly, select the appropriate mode and gear. The atmosphere, your mood, and your physical condition may affect your milk flow. To increase milk production, consider using a warm compress with a towel. Generally, it doesn't matter if you utilize breast pumps from different brands.
- The primary causes of issues are deformation from cleaning and improperly installed accessories. Consumable components include silicone diaphragms and duckbill valves. It is advisable to change them every three to six months. You might try the following measures to see if the suction force decreases:
 - Examine the accessories for damage or significant deformation.
 - Assemble the accessories and ensure they are fully sealed following the provided instructions.
 - Ensure the silicone diaphragm is fully contracted and adjust to the breast pumping mode's highest gear.

Can't suck milk

- Determine whether the breast is agglomerated:** (1). Gently massage the breast for five minutes with a heated towel or a hot and cold compress. (2). Start using the smallest "breast pumping" setting on the breast pump, gradually increasing the suction as you work to release any milk blockages.
- Determine whether the breast has any milk:** If the mammary glands are inactive and not producing milk, nutrition therapy and training the body may help stimulate milk production. To promote milk production, consider consuming foods such as old hen soup, peanuts, trotters, soybeans, astragalus, angelica, soybean sprouts, tofu, enoki mushrooms, and other lactogenic foods.

15

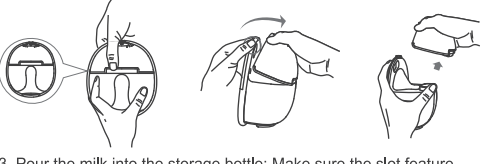
Ending your pumping journey

After you finish pumping please remove the breast pump from the breast. Keep the breast pump upright and remove the motor part and hold the milk collector to pour the breast milk into the bottle. Make sure the milk collector gap of the breast cup is aligned with the mouth of the bottle to prevent breast milk spilled.

1. When you finished expressing, long press the power button to switch off and break the seal between the breast and the pump funnel with your finger, and then carefully remove the pump from your breast.



2. Separate the pump motor from the milk collector by holding motor diagonally and separating the magnetic contact first. Then prepare for feeding/storage. Clean other used parts according to instructions.



3. Pour the milk into the storage bottle; Make sure the slot feature aligned with the bottle.



16

Cleaning

Cleaning & maintenance

	First Time Use	After Each Use
Pump Body	/	Wipe with a clean damp cloth with 70% ethyl alcohol or isopropyl alcohol as needed. Do not immerse Pump in water.
Flange, Silicone Diaphragm, Valve and Milk Collector	Boiling in water for 5 minutes. Do not microwave Flange, Silicone Diaphragm, Valve and Milk Collector	Clean with mild dish washing soap or clean water.

WARNINGS

- Be careful when dismantling and cleaning the valve, if the valve is damaged, the breast pump will not work properly.
- To clean the valve, please rub it gently in the warm water with a few drops of cleaning liquid. Do not insert any objects into the valve, which may cause damage.

Clean by hand

- Place pump parts in a clean wash basin used only for infant feeding item. Do not place pump parts directly in the sink.
- Add soap and hot water to basin.
- Scrub items using a clean brush only for infant feeding items.
- Rinse by holding items under running water, or by submerging in fresh water in a separate basin.
- Air-dry thoroughly. Place pump parts, wash basin, and bottle brush on a clean, unused dish towel or paper towel in an area protected from dirt and dust. Do not use a dish towel to rub or pat items dry.
- Clean wash basin and bottle brush. Rinse them well and allow them to air-dry after each use. Wash them by hand at least every few days.

17

Storing your breast milk

Storing breast milk

- Only store breast milk collected by sterilized breast pumps.
- The extracted milk can be placed in a clean and sterilized milk storage bag or a milk bottle with a sealing cushion, and immediately placed in the refrigerator to refrigerate or freeze.

Cautious

- Do not freeze breast milk repeatedly.
- Do not mix fresh breast milk with frozen breast milk.
- Be sure to discard the breast milk left after feeding.
- The extracted milk can be refrigerated in the refrigerator for 48 hours (inside the refrigerator) or frozen in the freezer for three months, and the milk bottle or milk storage bag can be affixed with a label clearly marking the milking date and time.

Unfreeze breast milk

Place the frozen breast milk in the refrigerator compartment for one night to thaw. In an emergency, you can use a bowl of hot water to thaw breast milk. After thawing breast milk, it must be consumed within 24 hours.

Breast milk heating

- Erect the baby bottle in a bowl of hot water or heat the breast milk safely and quickly with a baby bottle and food heater.
- Keep in mind! Before feeding your baby, be sure to check the temperature of breast milk.
- Do not use a microwave oven to heat breast milk, because this may destroy important nutrients and antibodies.
- In addition, uneven heating may cause partial overheating of the liquid, which may cause burns.
- Do not immerse the milk storage bottle in boiling water to heat it to prevent it from rupturing or cracking.

18

Warranty

Warranty Card

Product Warranty Card No. _____

Product Model. _____

Serial Number. _____

User Name. _____

Phone Number. _____

Purchase Time. _____ Y _____ M _____ D

Invoice No. _____

Dealer's seal

FCC Caution.

This device complies with part 15 of the FCC Rules. Operation is subject to the following two conditions:

- (1) This device may not cause harmful interference, and
- (2) this device must accept any interference received, including interference that may cause undesired operation.

Any Changes or modifications not expressly approved by the party responsible for compliance could void the user's authority to operate the equipment.

Note: This equipment has been tested and found to comply with the limits for a Class B digital device, pursuant to part 15 of the FCC Rules. These limits are designed to provide reasonable protection against harmful interference in a residential installation. This equipment generates uses and can radiate radio frequency energy and, if not installed and used in accordance with the instructions, may cause harmful interference to radio communications. However, there is no guarantee that interference will not occur in a particular installation. If this equipment does cause harmful interference to radio or television reception, which can be determined by turning the equipment off and on, the user is encouraged to try to correct the interference by one or more of the following measures:

- Reorient or relocate the receiving antenna.
- Increase the separation between the equipment and receiver.
- Connect the equipment into an outlet on a circuit different from that to which the receiver is connected.
- Consult the dealer or an experienced radio/TV technician for help.

FCC Radiation Exposure Statement:

The device has been evaluated to meet general RF exposure requirement. The device can be used in portable exposure condition without restriction.

IC Warning

This device complies with Innovation, Science and Economic Development Canada licence-exempt RSS standard(s). Operation is subject to the following two conditions:

- (1) This device may not cause interference, and
- (2) This device must accept any interference, including interference that may cause undesired operation of the device.

Le présent appareil est conforme aux CNR Innovation, Sciences et Développement économique Canada applicables aux appareils radio exempts de licence. L'exploitation est autorisée aux deux conditions suivantes:

- (1) l'appareil ne doit pas produire de brouillage, et
- (2) l'utilisateur de l'appareil doit accepter tout brouillage radioélectrique subi, même si le brouillage est susceptible d'en compromettre le fonctionnement

RF warning for Portable device:

The device has been evaluated to meet general RF exposure requirement. The device can be used in portable exposure condition without restriction.

L'appareil a été évalué pour répondre aux exigences générales en matière d'exposition aux RF.

L'appareil peut être utilisé en condition d'exposition portable sans restriction.