

RVLockBT product manual

1. Products



1,TYPE-C charging port

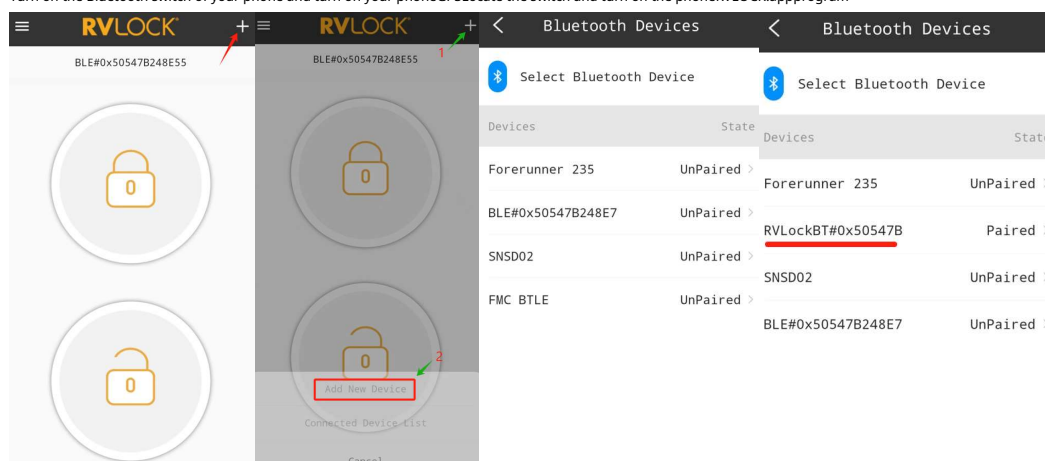
2,BTBluetooth pairing button

3,ledWork indicator light

two,BTBluetooth pairing

Long press button 1, White LED light starts to flash and enters the broadcast waiting for Bluetooth pairing. After the pairing is successful, it turns white. LED light will go out and pairing is unsuccessful. 30s back white LED light will also go out and automatically exit the pairing mode. You can press and hold the button again. 1s Enter pairing mode;

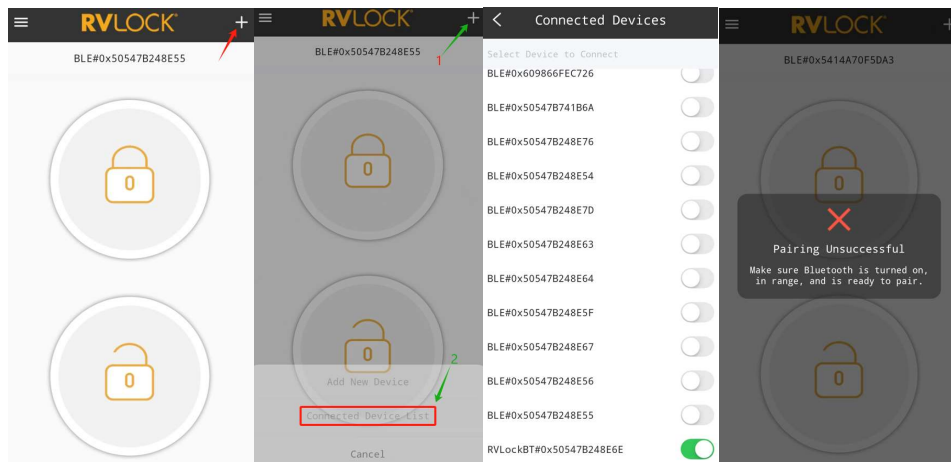
Turn on the Bluetooth switch of your phone and turn on your phone GPS. Locate the switch and turn on the phone RVLOCK app program



1, click the + sign in the upper right corner

2, select Add new device Add New Device

3, Selecting a Bluetooth device Select Bluetooth Device Found the belt RVLockBT#0x*****device, click Click > on the right to start pairing. After success, it will be Unpaired become Paired;



4. If you have paired multiple devices of the same model before, you need to select the device you currently need to control again when you use it again.

+ → Connected Device List → bringRVLockBT#***The Bluetooth name of the device that currently needs to be controlled. If the wrong selection is made, a pop-up will appear as shown above ×Pairing UnsuccessfulCall the police and re-select until correct.

three,RF 433Code matching

WillIRVLockBTPlace the box next to the device that needs to be controlled and find theLearnlong press1Sand then release it, press the unlock button or lock button, and the device willappThe corresponding response of unlocking or closing the lock indicates that the code is successfully matched.

4. GiveRVLockBTbox charging

WillUSB-Type-CWire,Type-CEnd insertionRVLockBTInto the charging port, and insert the other end into the charging head. RVLockBTThe box will automatically start charging, and the blue indicator light will flash. When charging is complete, it will stop charging. The blue indicator light will stay on. When the charging is removed, the blue indicator light will go out.

FCC Warning

Changes or modifications not expressly approved by the party responsible for compliance could void the user's authority to operate the equipment.

This equipment has been tested and found to comply with the limits for a Class B digital device, pursuant to Part 15 of the FCC Rules. These limits are designed to provide reasonable protection against harmful interference in a residential installation. This equipment generates uses and can radiate radio frequency energy and, if not installed and used in accordance with the instructions, may cause harmful interference to radio communications. However, there is no guarantee that interference will not occur in a particular installation. If this equipment does cause harmful interference to radio or television reception, which can be determined by turning the equipment off and on, the user is encouraged to try to correct the interference by one or more of the following measures:

- - Reorient or relocate the receiving antenna.
- - Increase the separation between the equipment and receiver.
- - Connect the equipment into an outlet on a circuit different from that to which the receiver is connected.
- - Consult the dealer or an experienced radio/TV technician for help

This device complies with part 15 of the FCC rules. Operation is subject to the following two conditions

(1)this device may not cause harmful interference, and (2) this device must accept any interference received, including interference that may cause undesired operation.