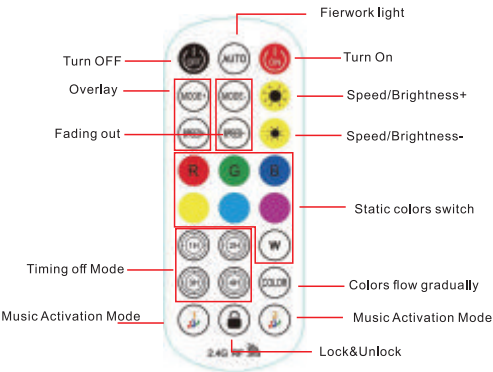


Outdoor eaves light



Usage:
Connection method:
installation:

Key Instruction



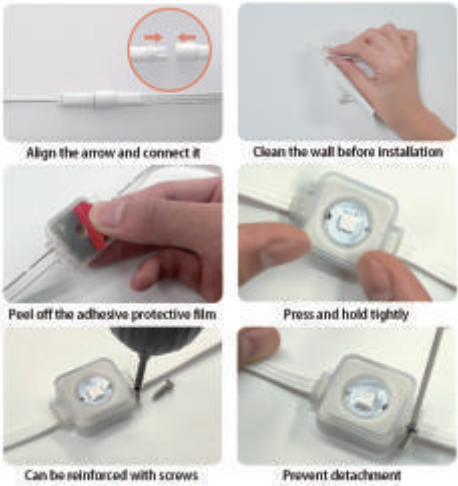
application:

Eaves Room Indoor
2.4G can be operated within
10 meters after installing the battery
DIY decoration, do anything you want to do

Installation steps

model	Wy021
Product size	30.15x30.15mm
Input voltage	DC 24V
Lamp power	1W
LED type	RGB 5054 LED
LEDs number	1
Color temperature	RGB addressable
Waterproof grade	Ip67
Shell body material	ABS+PC
Beam angle	≥140°
Lifespan	≥50000h

Installation method of lighting fixtures



Scan the QR code to download the app
Connect the LED eaves light to the controller, turn on the power to the controller

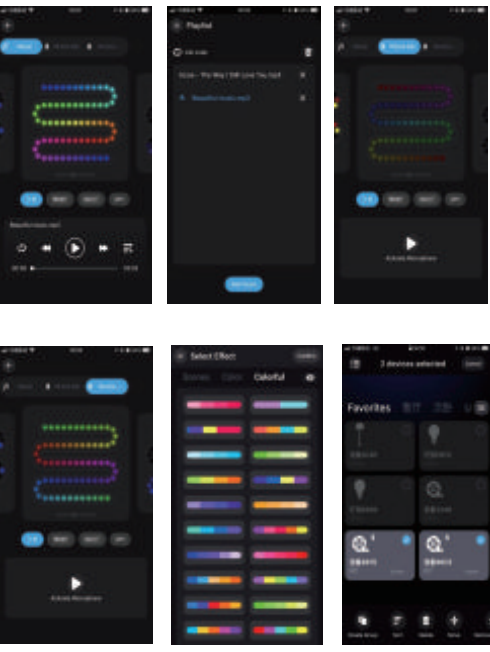
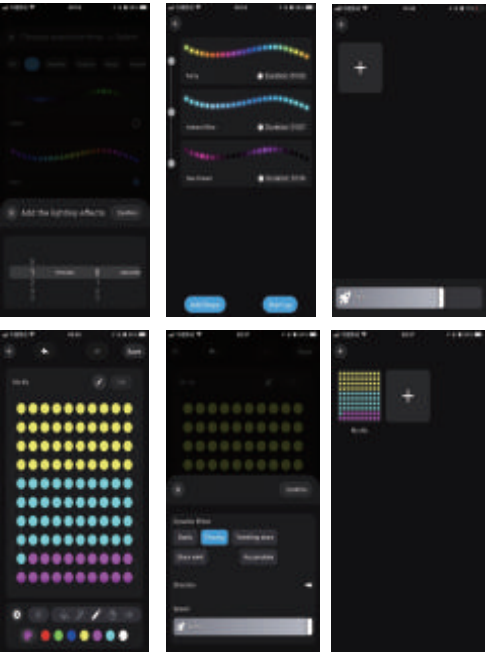


Start the app, search and connect to the controller

APP Program Usage



Enjoy Bluetooth wireless control experience



Notes:
Detailed operation instructions, enter the menu "Guide"

- security information
1. The lighting fixtures are available for indoor and outdoor use
 2. Risk of electric shock
 3. The power adapter and controller should not be exposed to liquids, steam, or rainwater.
 4. Stay away from open flames
 5. Avoid rough installation surfaces and ensure that the surface is clean and dry before installation

FCC WARNING

This device complies with part 15 of the FCC Rules. Operation is subject to the following two conditions:
(1) this device may not cause harmful interference, and
(2) this device must accept any interference received, including interference that may cause undesired operation.
Any changes or modifications not expressly approved by the party responsible for compliance could void the user's authority to operate the equipment.
NOTE: This equipment has been tested and found to comply with the limits for a Class B digital device, pursuant to Part 15 of the FCC Rules. These limits are designed to provide reasonable protection against harmful interference in a residential installation. This equipment generates, uses and can radiate radio frequency energy and, if not installed and used in accordance with the instructions, may cause harmful interference to radio communications.

However, there is no guarantee that interference will not occur in a particular installation. If this equipment does cause harmful interference to radio or television reception, which can be determined by turning the equipment off and on, the user is encouraged to try to correct the interference by one or more of the following measures:
-- Reorient or relocate the receiving antenna.
-- Increase the separation between the equipment and receiver.
-- Connect the equipment into an outlet on a circuit different from that to which the receiver is connected.
-- Consult the dealer or an experienced radio/TV technician for help.
To maintain compliance with FCC's RF Exposure guidelines, This equipment should be installed and operated with minimum 20cm distance between the radiator and your body: Use only the supplied antenna.