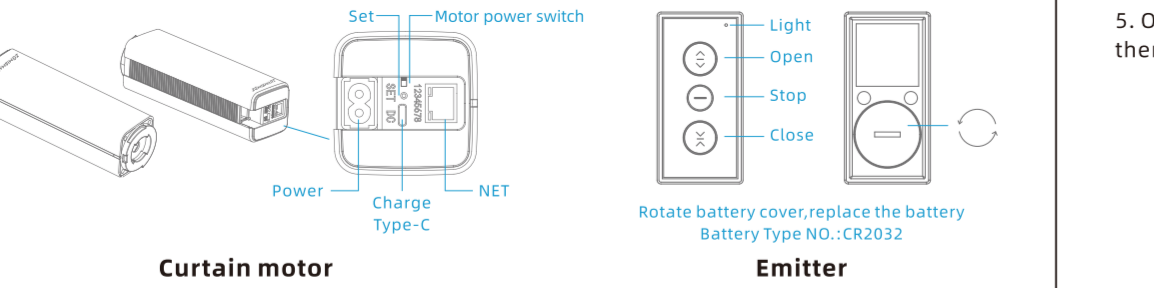
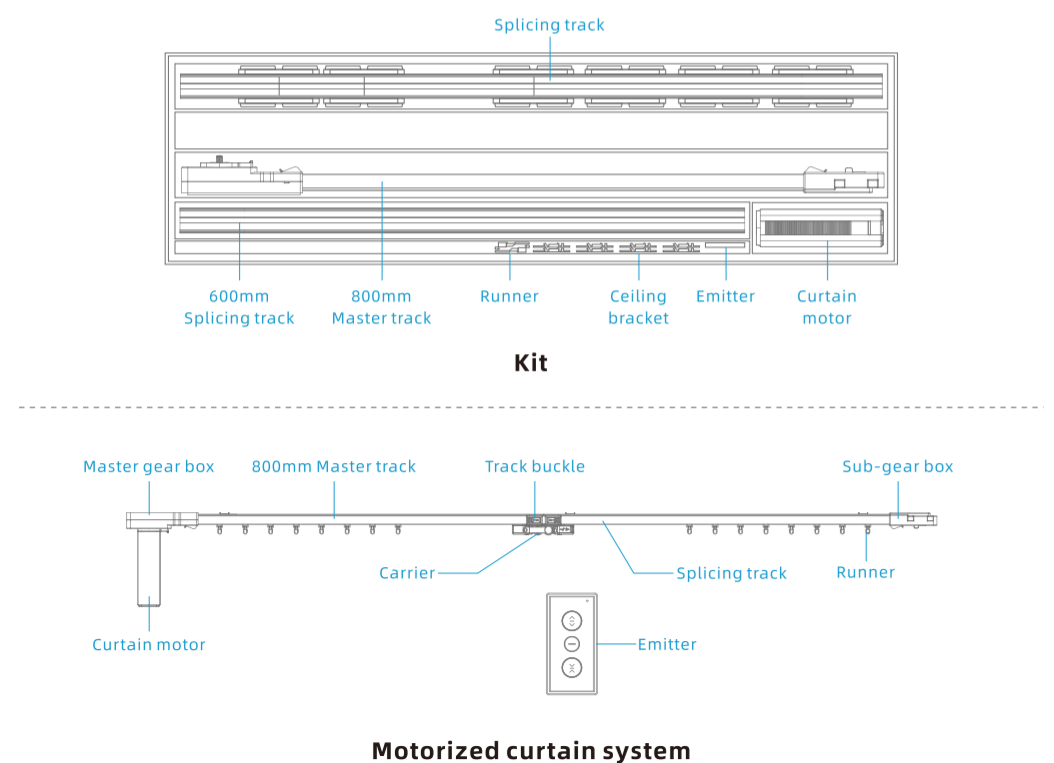


Smart Slide Curtain Instruction

Specification

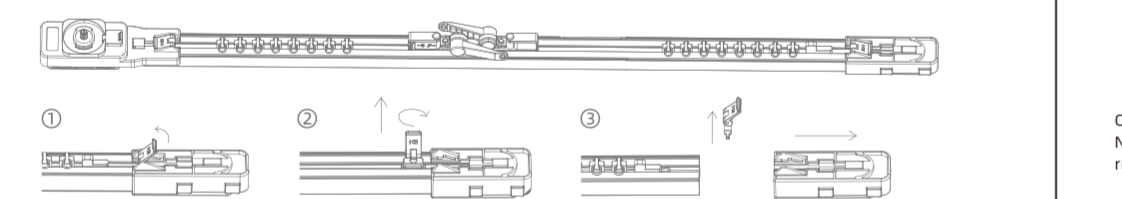
Product model	Input voltage	Torque	Running speed	Protect grade	Max load
ZMS1	110-220V AC (50/60Hz)	0.15Nm	Adjustable in 3 gears	IP20	50KG

Product Instruction

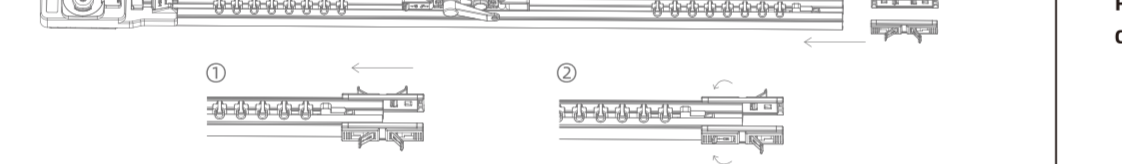


Track splicing

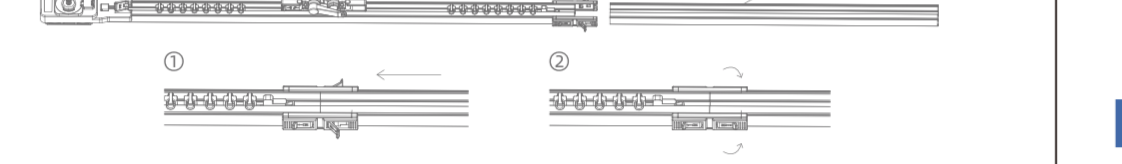
1. Open the lock of sub gear box, and take off the box.



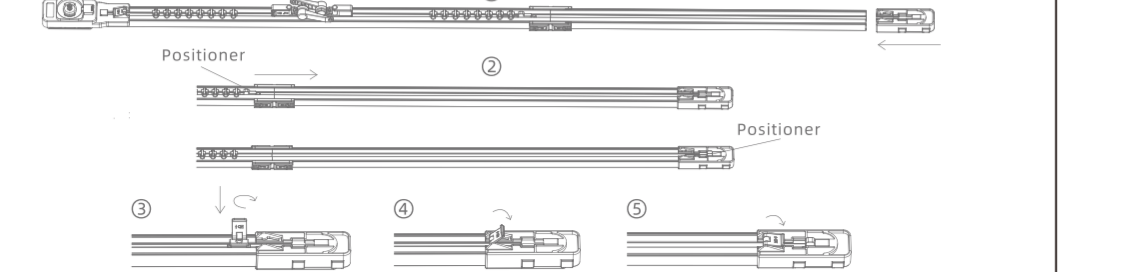
2. Insert the track buckle into the track, fix one side.



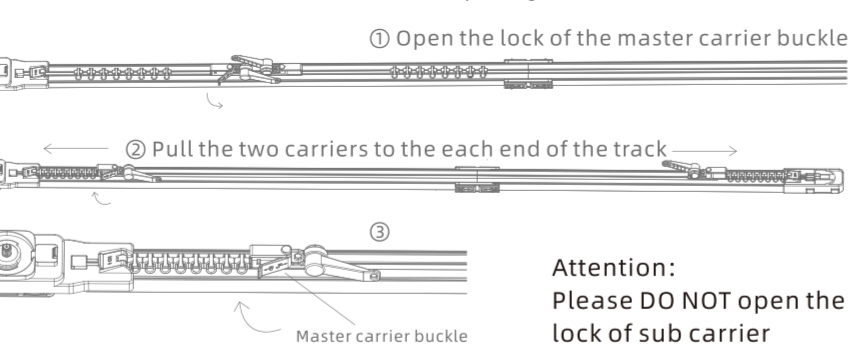
3. Insert 0.6m track into the other side of track buckle, then splice two tracks tightly, lock the buckle.



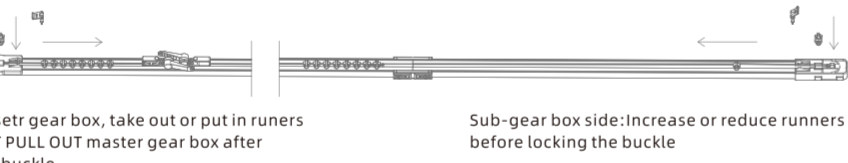
4. Install the sub gear box again, and pull the positioner to the end of the track at sub-gear boxside, lock the buckle of sub gear box when hear a sound of click.



5. Open the lock of the master carrier, then pull the two carriers to the each end of the track, then lock of the master carrier. Now the whole track splicing is finished.

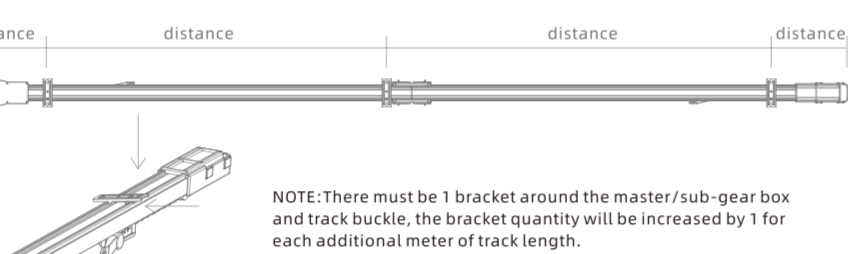


6. Enough runners have been put into track in factory, customer can increase or reduce the number of runners as require. (8pcs/m)



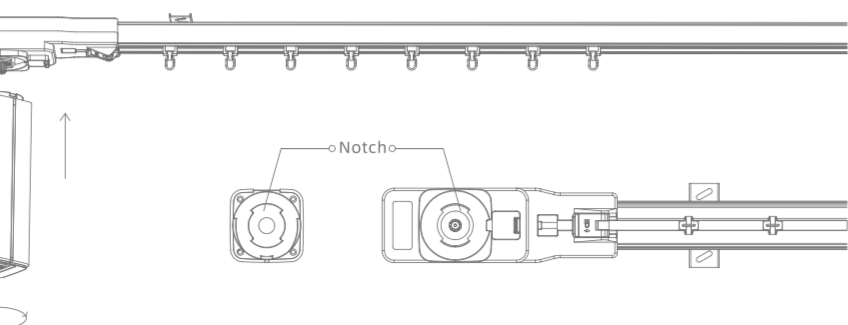
Track installation

Please install the ceiling bracket before installing the track, and measure the distance to fix the ceiling bracket, then clip the track into the bracket.



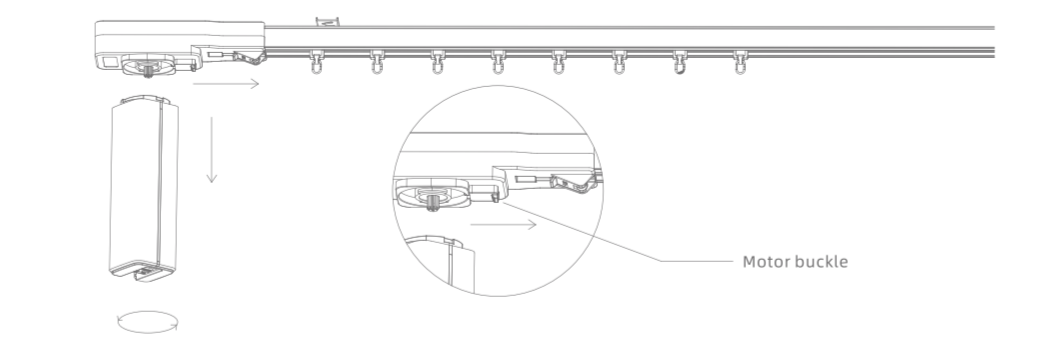
Curtain motor installation

Insert the motor head into the groove of the master gear box, turn it 90° counterclockwise.



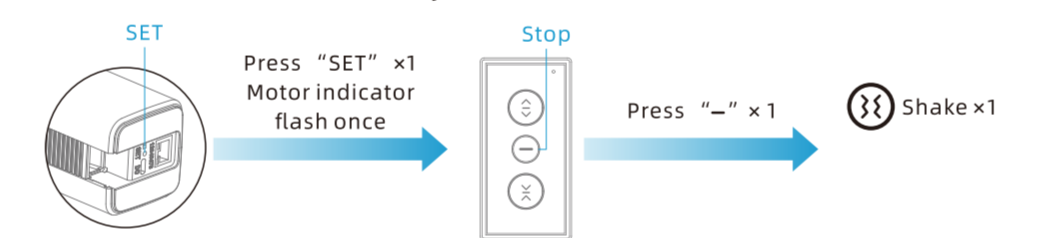
Disassemble of curtain motor

Pull the motor buckle, turn it 90° clockwise, remove the motor.



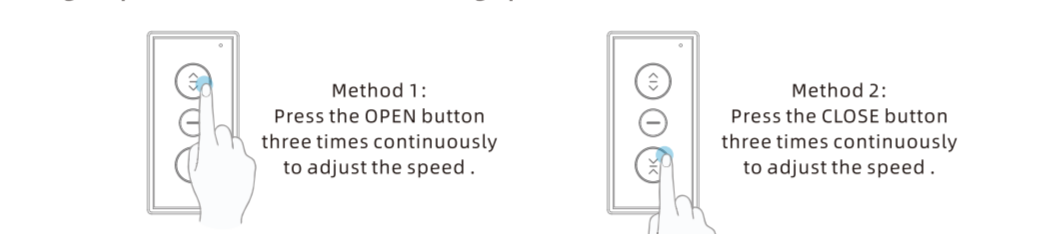
Motor pair to remote control

Note: There is single channel emitter included in kit, it has been coed with motor, can work with the motor directly.



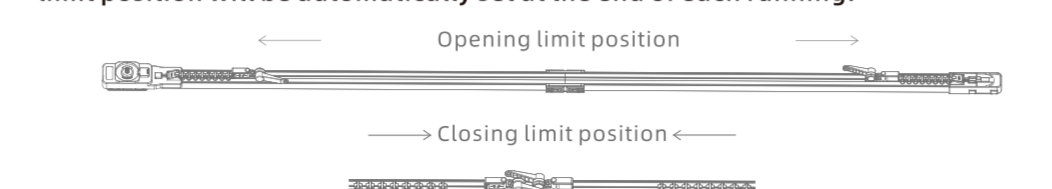
Speed adjustment

There are 3 levels of motor running speed : Silent level, low-speed level and high-speed level, the initial running speed is silent level.

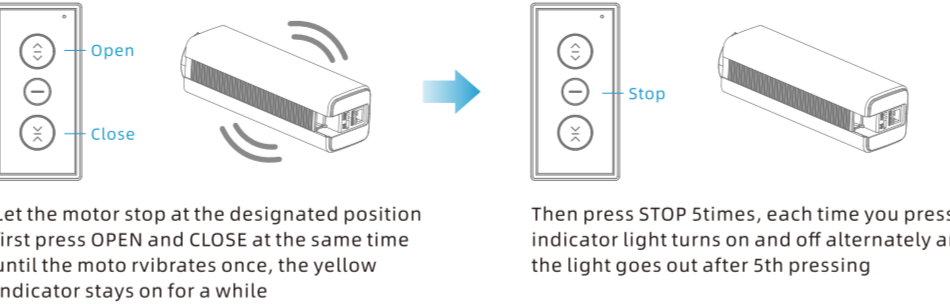


Set the limit

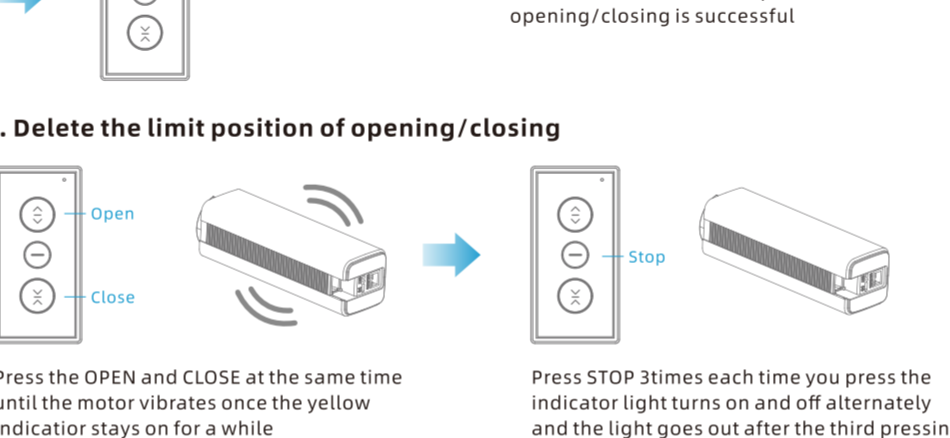
When motor is powered on, let it run a complete opening and closing once, the limit position will be automatically set at the end of each running.



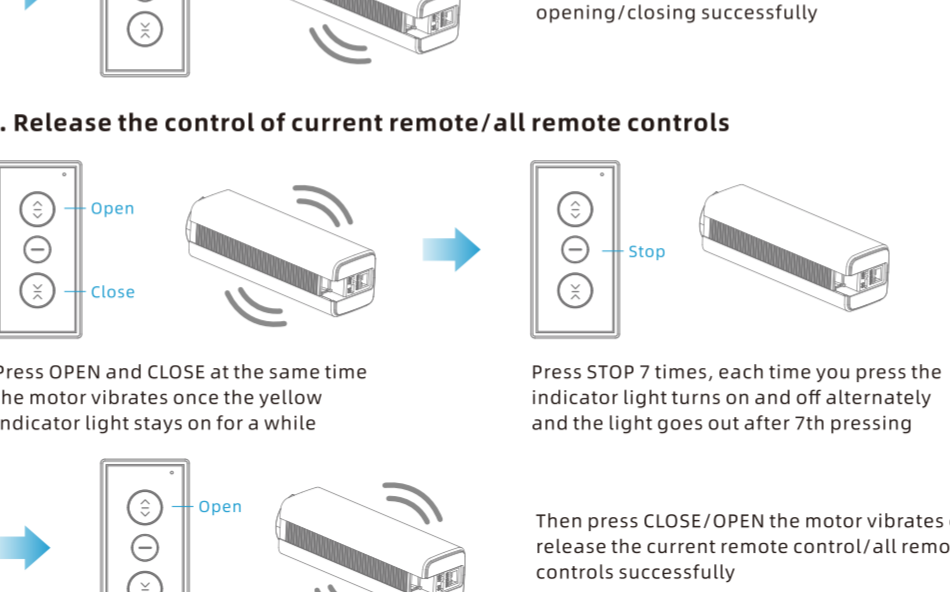
1. Set the limit position of opening/closing



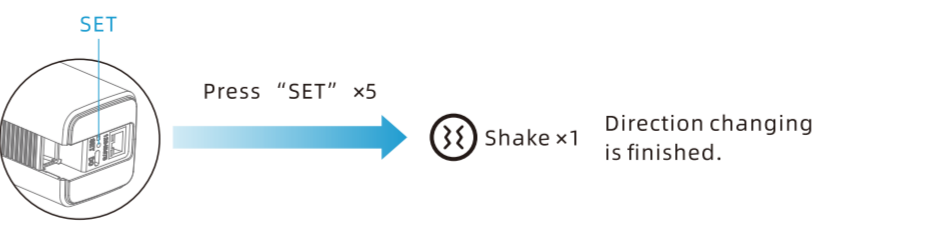
2. Delete the limit position of opening/closing



3. Release the control of current remote/all remote controls



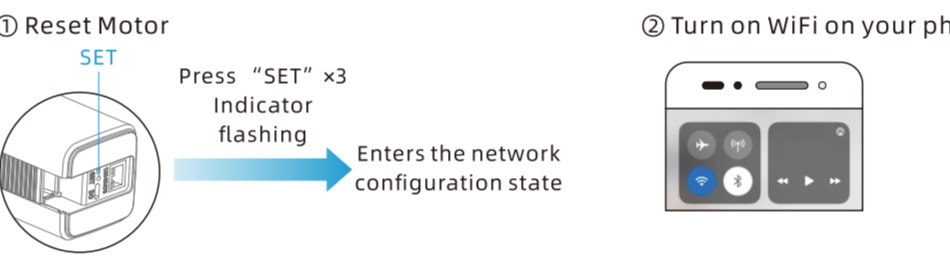
Change direction



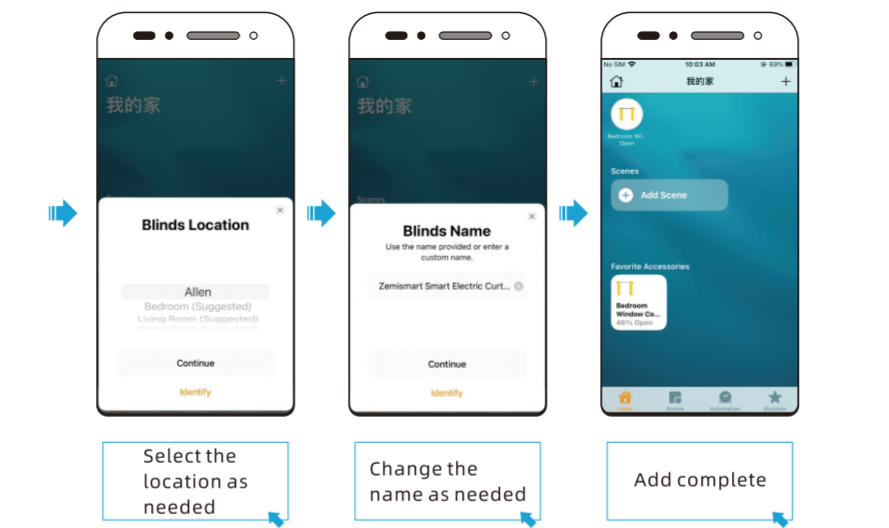
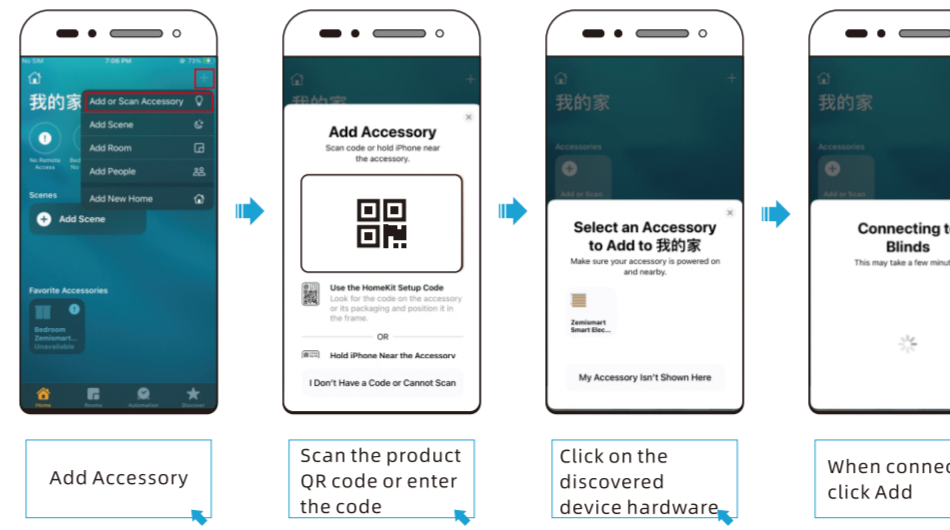
Motor pair to APP

1. Matter over thread version

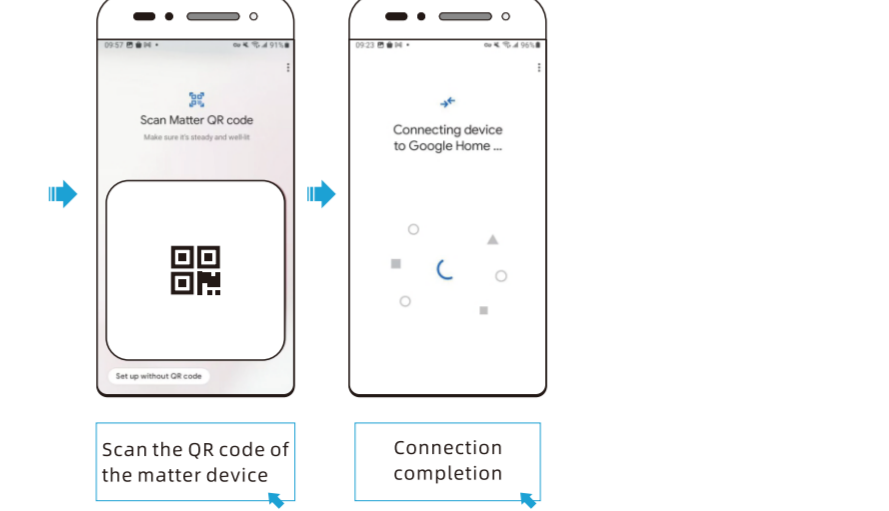
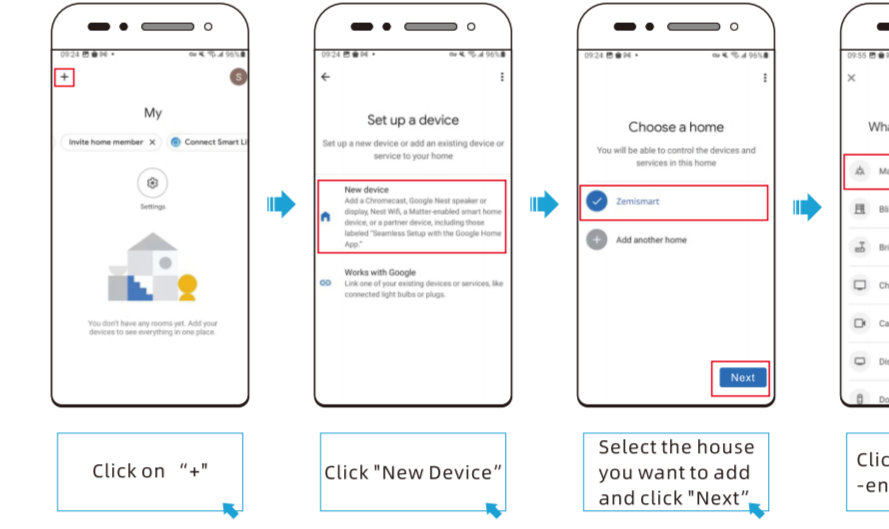
- Note:
1. A Matter-certified ecosystem smart home app is required.
 2. A Home hub is required to set up matter-certified devices.
 3. Setup processes may vary between ecosystems. In this user manual just make Apple Home APP and Google Homekit APP for exmple.
 4. Limit setting is necessary before use APP to control.



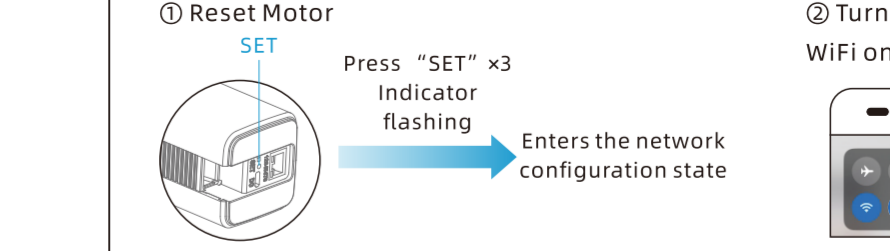
A: Follow the below instructions to set up on Apple Home APP.



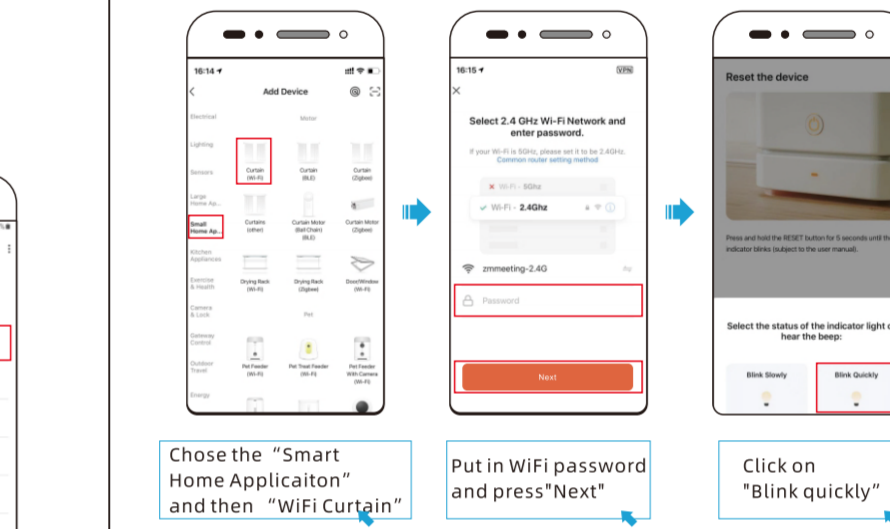
B: Follow the below instructions to set up on Google Home APP.



2. Tuya version

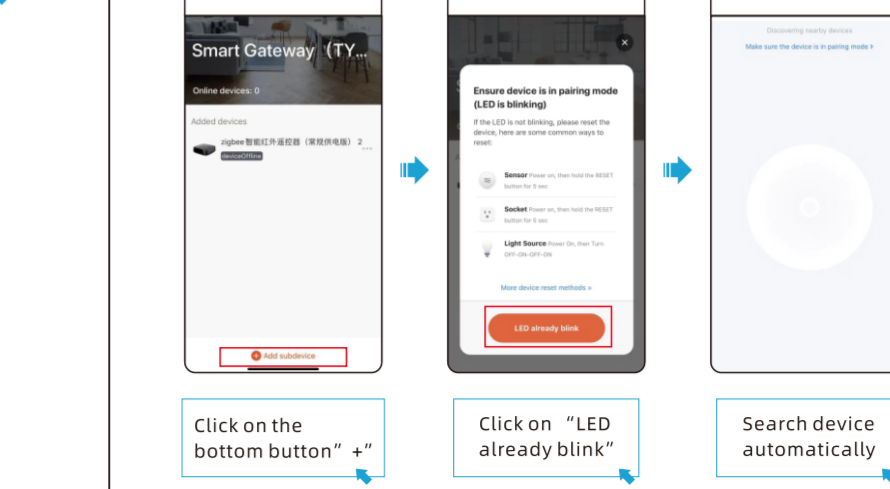


A: Tuya WiFi Version
Go into Tuya APP main page, click on the up-right button " + ", then follow these steps to complete the pairing.



B: Zigbee version

Go into Tuya Zigbee hub page, then follow these steps to complete the pairing.



FCC STATEMENT

This device complies with Part 15 of the FCC Rules. Operation is subject to the following two conditions:

- (1) This device may not cause harmful interference, and
- (2) This device must accept any interference received, including interference that may cause undesired operation.

Warning: Changes or modifications not expressly approved by the party responsible for compliance could void the user's authority to operate the equipment.

NOTE: This equipment has been tested and found to comply with the limits for a Class B digital device, pursuant to Part 15 of the FCC Rules. These limits are designed to provide reasonable protection against harmful interference in a residential installation. This equipment generates uses and can radiate radio frequency energy and, if not installed and used in accordance with the instructions, may cause harmful interference to radio communications. However, there is no guarantee that interference will not occur in a particular installation. If this equipment does cause harmful interference to radio or television reception, which can be determined by turning the equipment off and on, the user is encouraged to try to correct the interference by one or more of the following measures:

- ① Reorient or relocate the receiving antenna.
- ② Increase the separation between the equipment and receiver.
- ③ Connect the equipment into an outlet on a circuit different from that to which the receiver is connected.
- ④ Consult the dealer or an experienced radio/TV technician for help.

FCC Radiation Exposure Statement

The device has been evaluated to meet general RF exposure requirement. The device can be used in portable exposure condition without restriction.