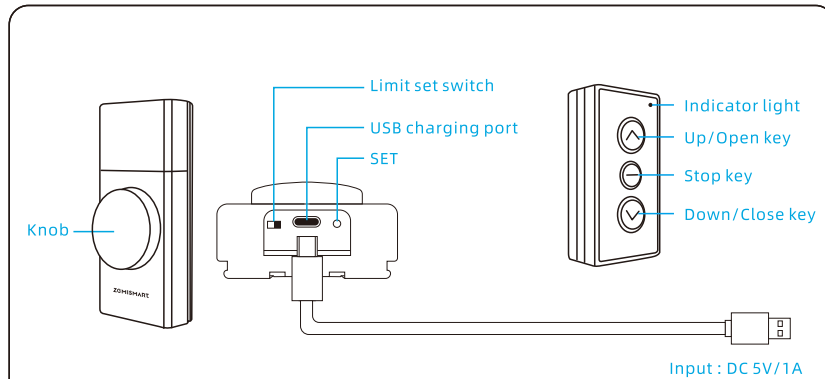


Smart Matter Thread Roller Shade Driver
Instruction

Specification

Product Model	Input Voltage	Rated Current	Battery Capacity	Load Bearing
MTP1	DC 5V/1A	500mA	6400mAh	5.5KGS

Product instruction



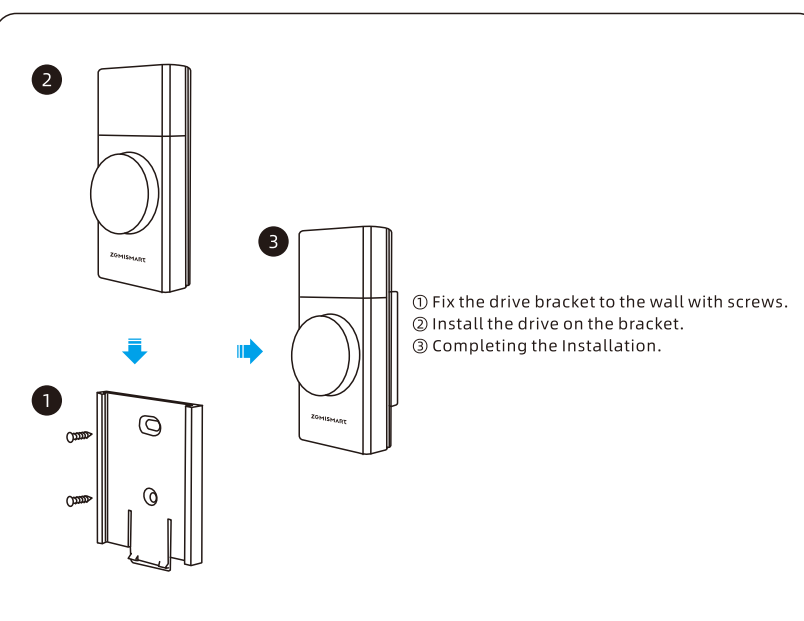
Limit set switch: to enter or exit the manual limit setting state, delete all limits;
① Turn the limit set switch to the left, the device will delete all limits if it has, and enter the manual limit setting state;
② Turn the switch to the right, exit the manual limit setting state.

Rotary knob: to start or stop the device running, set the opening&closing limit, switch the device running mode...

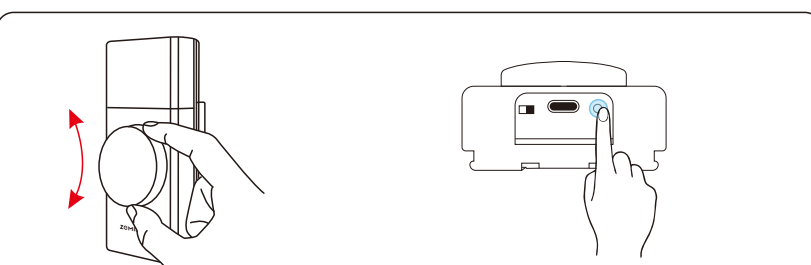
Fitting accessories

Bead wheels	Compatible cords & chains
	Beaded 3.0 mm
	4.5*6 mm
	4.5*12 mm
	3.2 mm
	6mm

Installation



Switch the storage mode

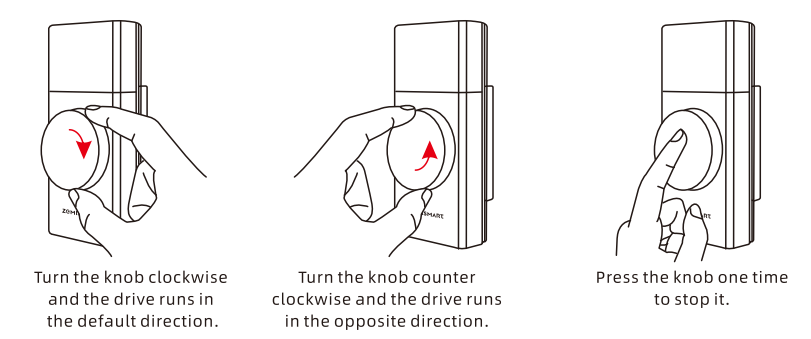


Distinguish: Rotate the knob to both directions, the device is unresponsive, or press the SET button on the bottom, indicator light doesn't respond, which means the device is in storage mode. The factory default state is storage mode.

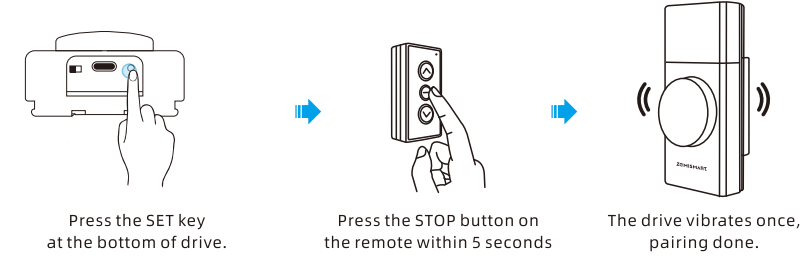
Exit: Long press the SET button on the bottom over 5s, release it until the driver vibrates once. Enter: If the device won't work for a long time, we recommend switching the device to storage mode. Long press the SET button 10s, release it until the device vibrates twice.

Device running operation-Rotary knob

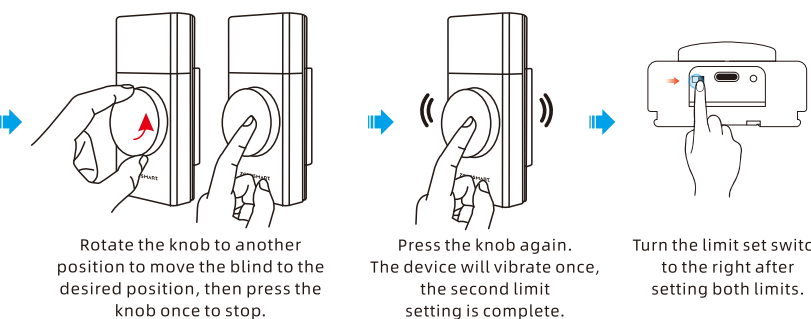
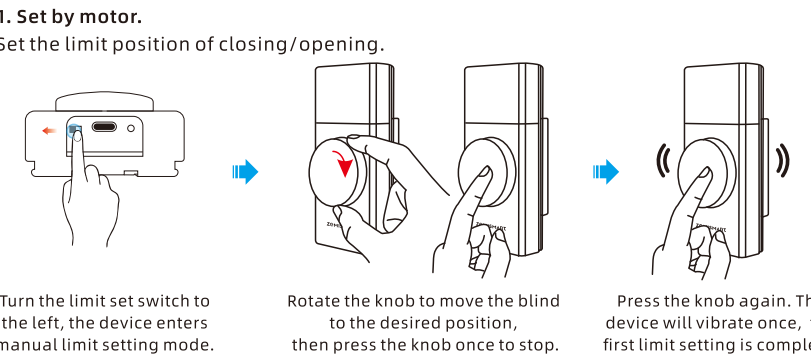
Start or stop the device.



Motor pair to remote control

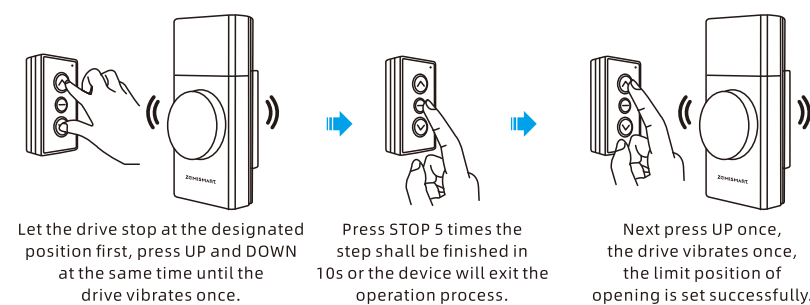


Set the limit

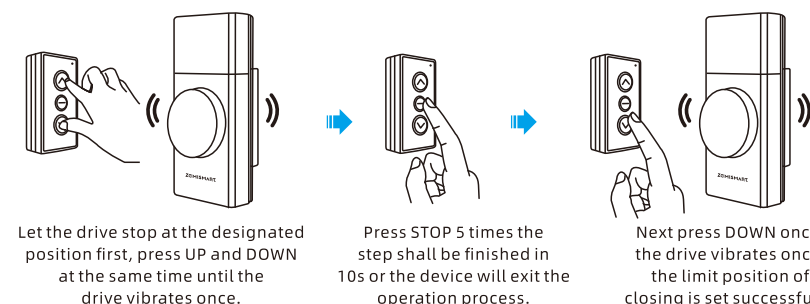


2. Set by remote.

2.1 Set the limit position of opening.



2.2 Set the limit position of closing.

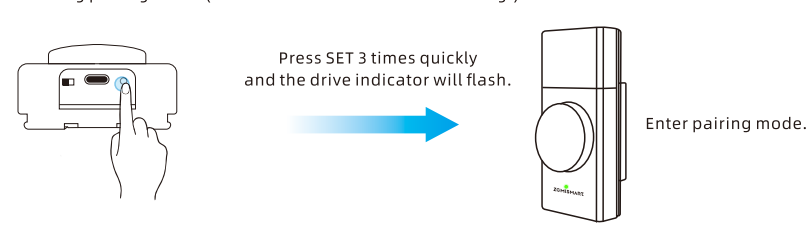


Tips Before Set Up the Motor

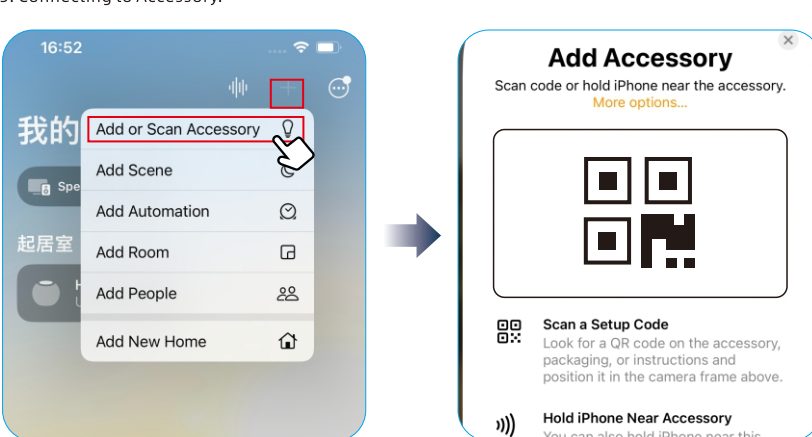
1. A Matter-certified smart home app is required and A Home hub is needed to set up Matter-certified devices.
2. Setup processes may vary by ecosystem.
3. For devices already added to the Matter ecosystem, simply obtain the sharing code and add it to the second platform—no need to reset the motor.
4. Ensure your phone's WIFI is on, then open your chosen smart home app and follow the instructions.

Pair to Home APP

*You need a home hub to control Matter devices while you're away from home.
1. Entering pairing mode. (Note: Make sure the drive is flashing.)

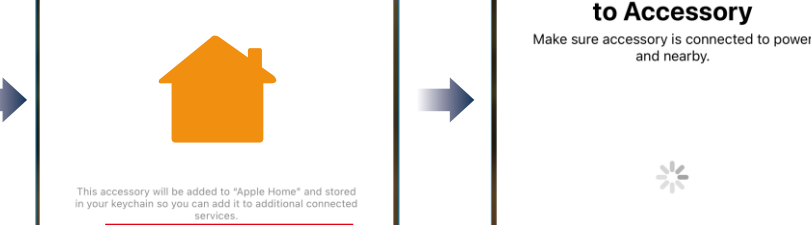


2. Click "+" and then click on "Add or Scan Accessory".
3. Scan the QR code on the device.
4. Select "Add to Home".
5. Connecting to Accessory.

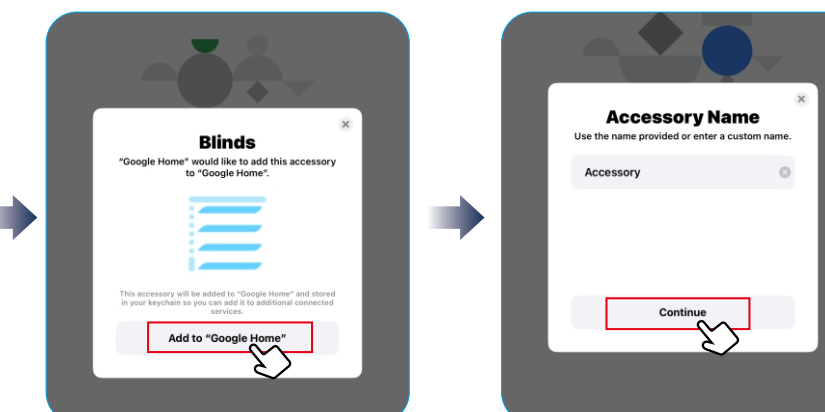
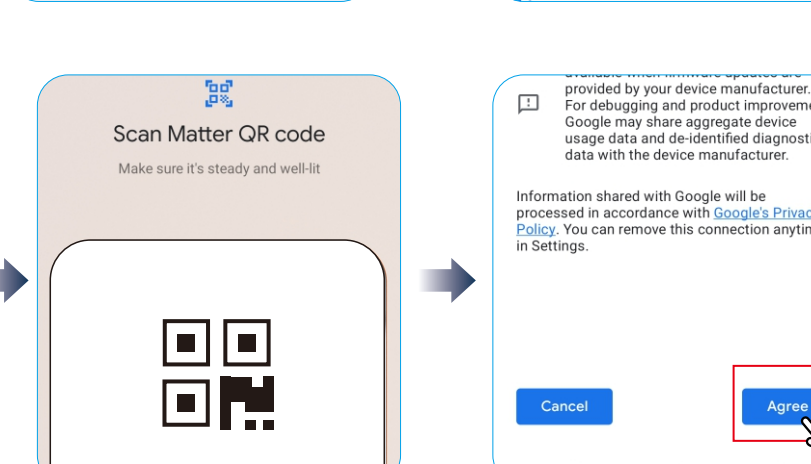
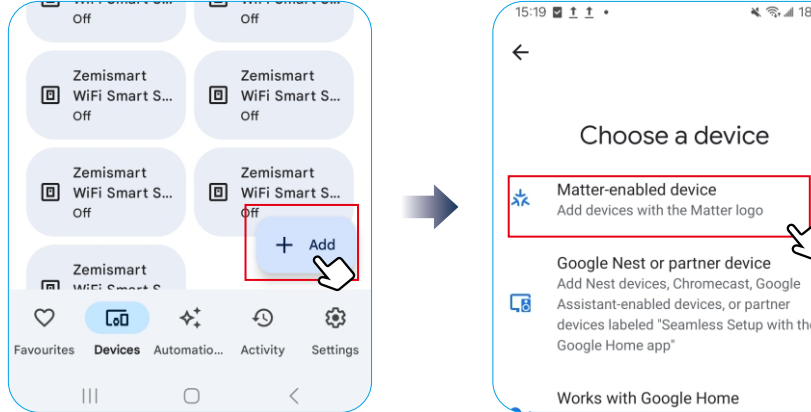
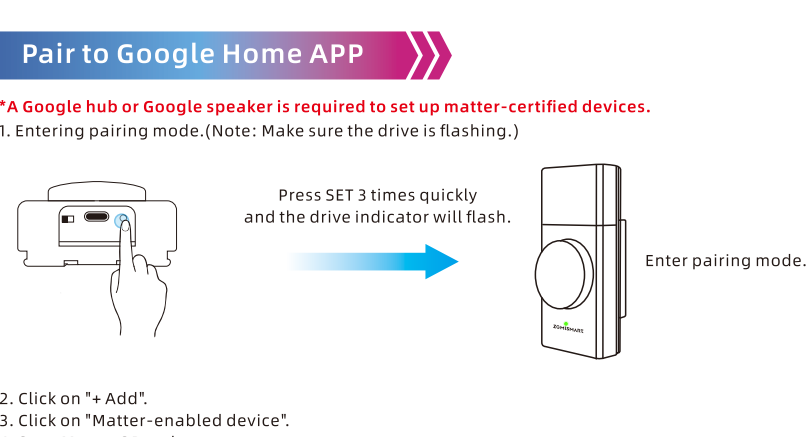


Pair to Google Home APP

*A Google hub or Google speaker is required to set up matter-certified devices.
1. Entering pairing mode. (Note: Make sure the drive is flashing.)

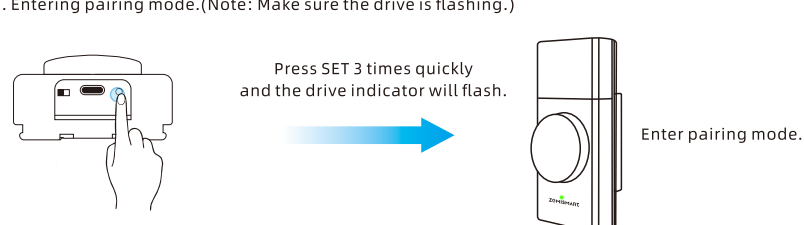


2. Click "+" and then click on "Add or Scan Accessory".
3. Scan the QR code on the device.
4. Select "Add to Home".
5. Connecting to Accessory.

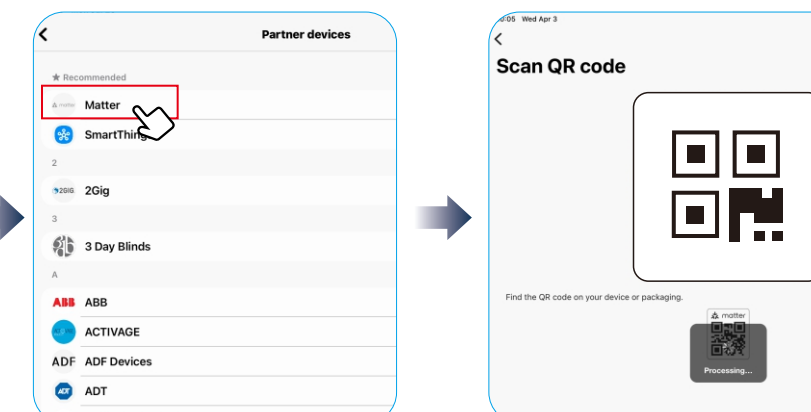
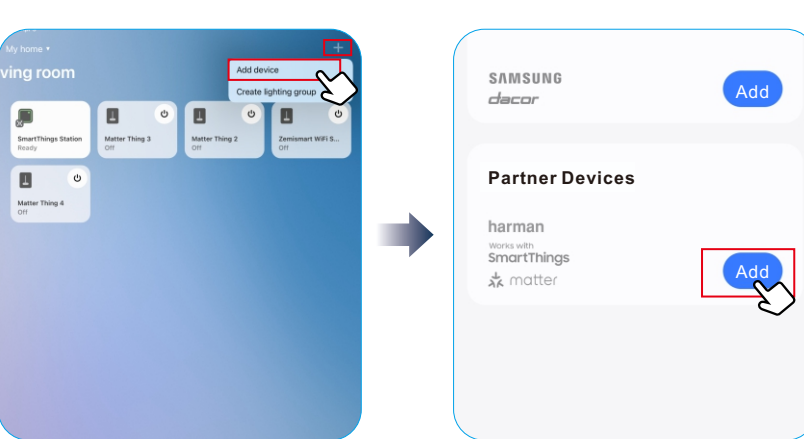


Pair to SmartTings APP

*A SmartTings hub or SmartTings speaker is required to set up matter-certified devices.
1. Entering pairing mode. (Note: Make sure the drive is flashing.)

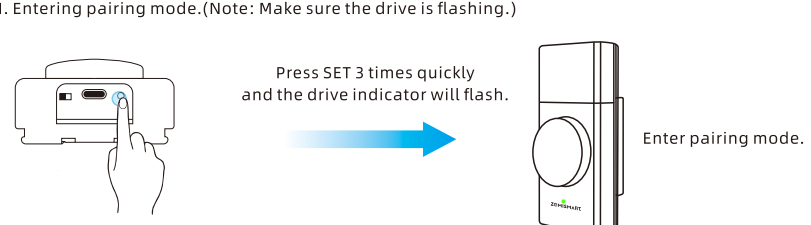


2. Click "+" and then click on "Add device".
3. Select Matter in Partner devices and click "Add".
4. Select "Matter".
5. Scan Matter QR code.
6. Follow the prompts to complete the pairings.

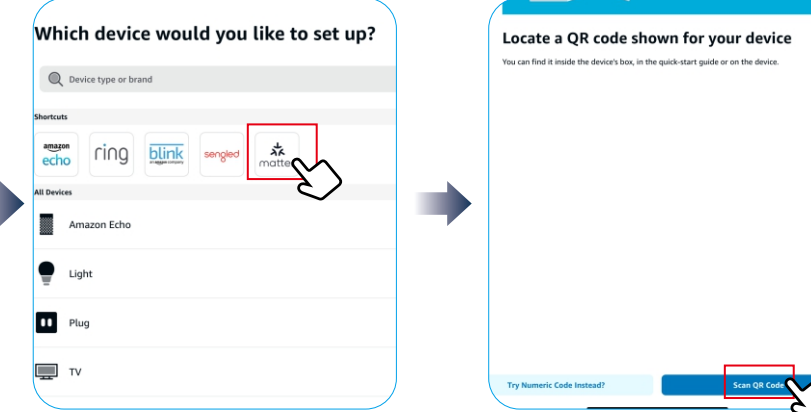
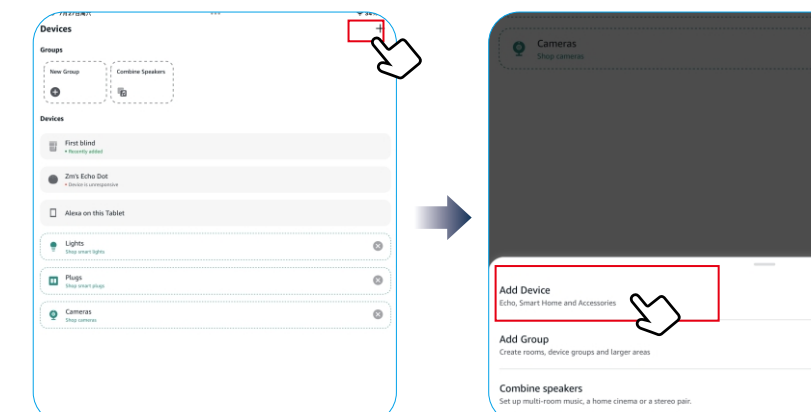


Pair to Alexa App

*If pairing fails please repeat the following steps.
1. Entering pairing mode. (Note: Make sure the drive is flashing.)

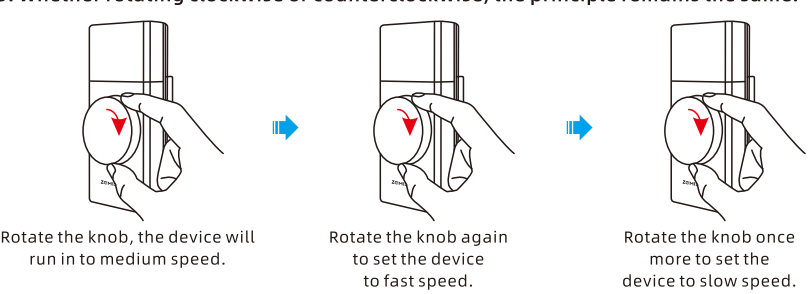


2. Click on "+".
3. Click on "Add Device".
4. Choose "Matter" logo.
5. Click on "Scan QR Code".
6. Follow the prompts to complete the pairings.



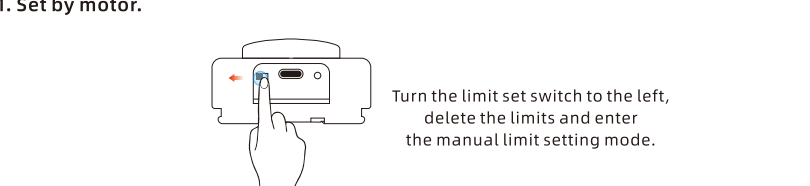
Adjust speed

1. The device will set to a medium speed by default after it exits the storage mode.
2. The device will continue at the same speed as when it was last stopped.
3. Whether rotating clockwise or counterclockwise, the principle remains the same.



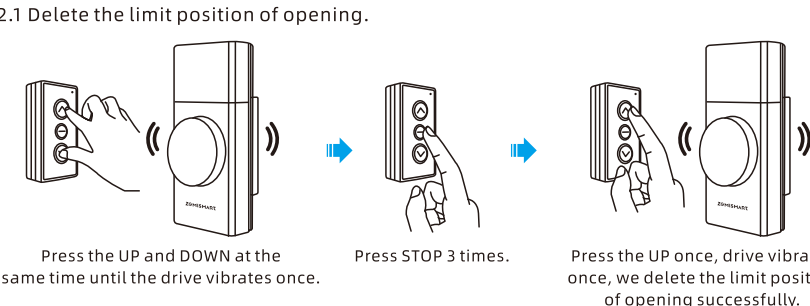
Delete the limit

1. Set by motor.

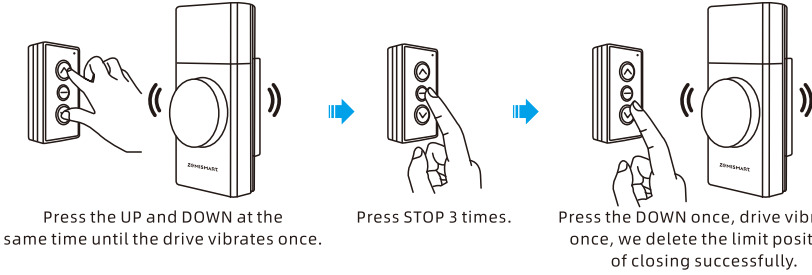


2. Set by remote.

2.1 Delete the limit position of opening.

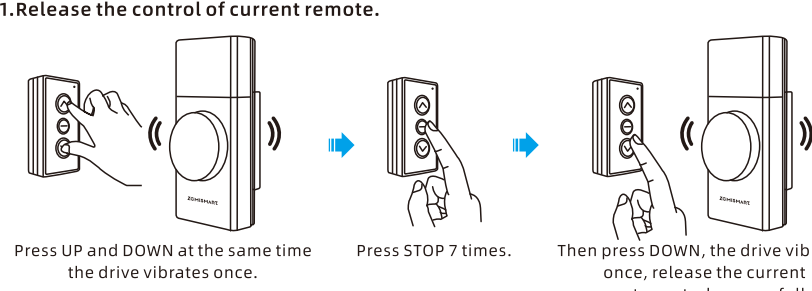


2.2 Delete the limit position of closing.

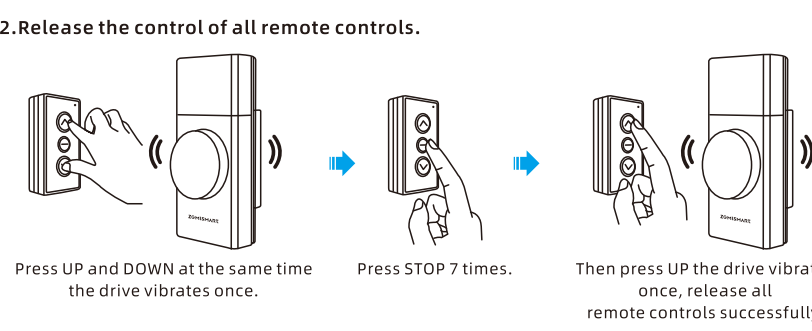


Release remote

1. Release the control of current remote.

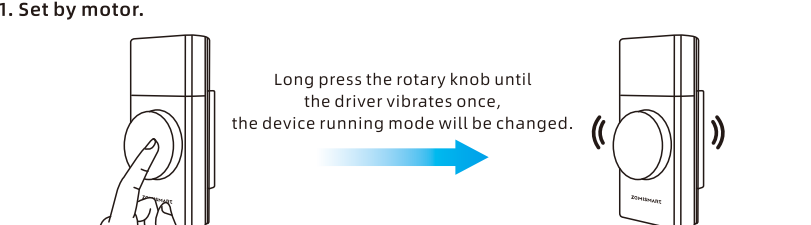


2. Release the control of all remote controls.

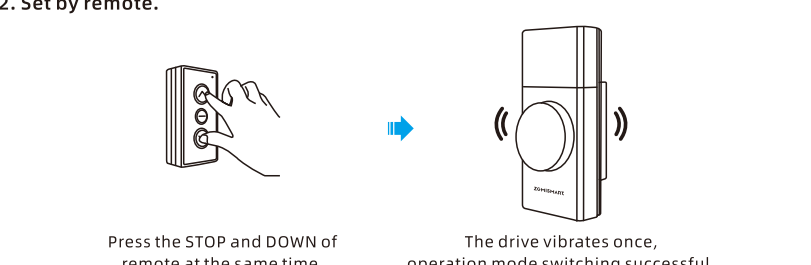


Inch running or continuous running operation

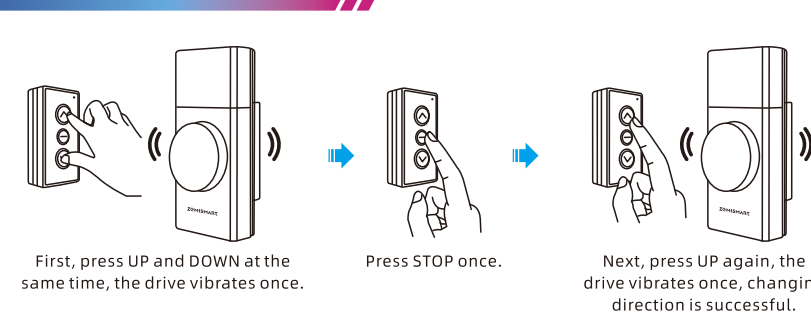
Note: The factory default mode is continuous running mode.
1. Set by motor.



2. Set by remote.



Direction change

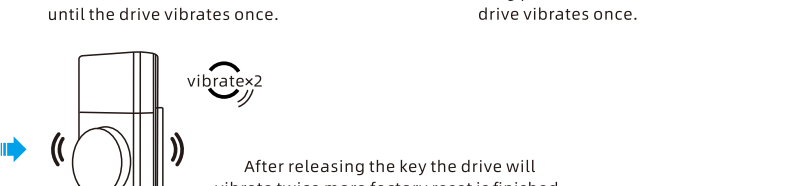
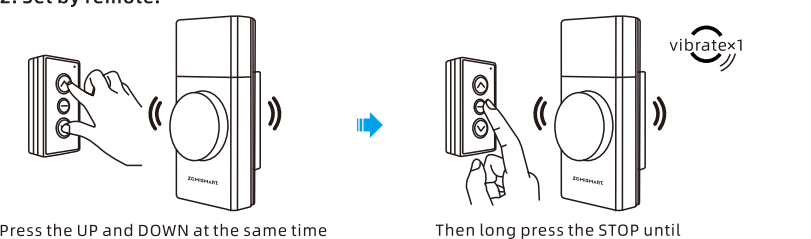


Factory reset

1. Set by motor.



2. Set by remote.



Quick guide



FCC Warning

This device complies with part 15 of the FCC Rules. Operation is subject to the following two conditions:
(1) This device may not cause harmful interference, and (2) this device must accept any interference received, including interference that may cause undesired operation.

Any Changes or modifications not expressly approved by the party responsible for compliance could void the user's authority to operate the equipment.

Note: This equipment has been tested and found to comply with the limits for a Class B digital device, pursuant to part 15 of the FCC Rules. These limits are designed to provide reasonable protection against harmful interference in a residential installation. This equipment generates uses and can radiate radio frequency energy and, if not installed and used in accordance with the instructions, may cause harmful interference to radio communications. However, there is no guarantee that interference will not occur in a particular installation. If this equipment does cause harmful interference to radio or television reception, which can be determined by turning the equipment off and on, the user is encouraged to try to correct the interference by one or more of the following measures:

- Reorient or relocate the receiving antenna.

- Increase the separation between the equipment and receiver.

- Connect the equipment into an outlet on a circuit different from that to which the receiver is connected.

- Consult the dealer or an experienced radio/TV technician for help.

The device has been evaluated to meet general RF exposure requirement. The device can be used in portable exposure condition without restriction.