



DUAL 10" 2-WAY P.A. SPEAKER
model: 4001958
USER MANUAL



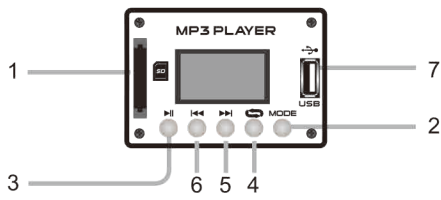
1. PACKING CONTENTS

- 1x speaker
- 1x remote control
- 1x user's guide
- 1x power cable

2. SPECIFICATIONS

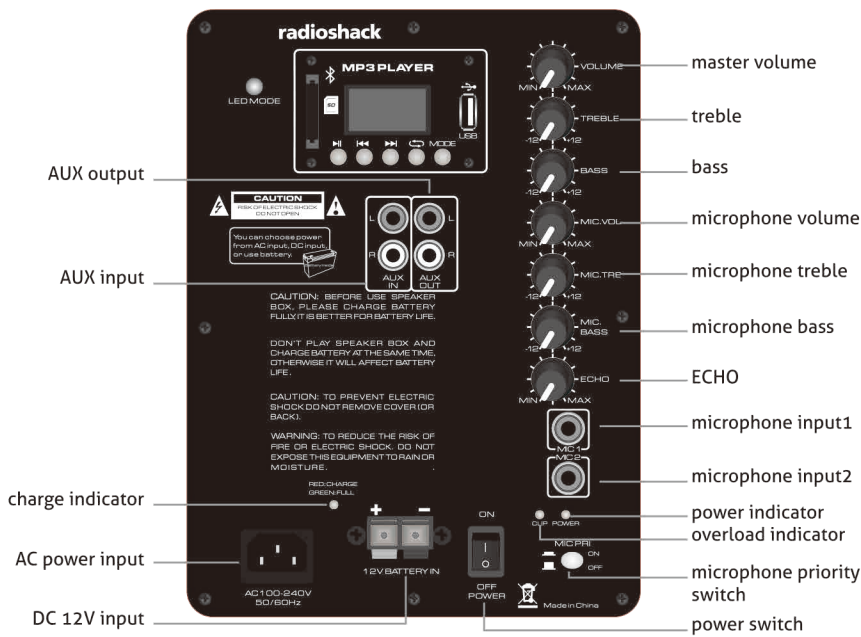
- Dual 10" active speaker box with rechargeable battery
- Input: AC100-240V, 50/60Hz or rechargeable battery
- Woofer: 10" woofer, 300z (120mm), (38mm) voice coil
- Tweeter: 25mm
- Sensitivity: 93dB (+/-3dB)
- Rechargeable battery capacity: 12V, 7AH
- With MP3, USB, FM, SD card socket
- Remote control included

3. PLAYER CONTROLS



1. SD card slot: use it to insert a SD card with MP3 files
2. Mode: select an operating modality, the options are SD, USB, Bluetooth & FM
3. Play/pause: press to play a song or pause while playing a song. When you choose FM mode, when pressing this button it will automatically search the FM stations
4. Press once to select a player mode, the options are:
One: select this to play current song indefinitely
All: with this option you can repeat all music
Random: The song will be play in random order
5. Next/volume+: press once to jump next song/press and hold to raise the volume level. In FM mode press it go to next station
6. Previous/volume-: press once to jump previous song/press and hold to diminish the volume level. In FM mode press it jump to the previous station.
7. USB input with MP3 file

4. AMPLIFIER



CONNECTION BLUETOOTH

1. To pair the speaker with a Bluetooth phone or audio device, press "mode" repeatedly on the MP3 player until select this mode
2. Put your cell phone or device to be used in Bluetooth device discovery mode
3. When your cell phone or device shows the "RS4001958" device, confirm the link

5. REMOTE CONTROL

1. Press to play a song or pause while playing a song. Program radio FM stations
2. In play mode press to set one equalizer mode
3. Vol+/Vol-
4. Previous: press once to jump previous song
5. Next: Press once to jump next song
6. Keys: Use this key to select the number of a desired track
7. Pick song: allows you to select the song you want to listen to; for example: If you want to hear the song No.11 first press the number 11 then press this button
8. Enter: choose repeat mode
9. Model: select an operating modality, the options are SD, USB, FM radio, AUX & Bluetooth
10. Battery compartment (CR2025)
11. Select a FM frequency

6. CAUTION

- Avoid exposing the speaker box to moisture, If they are set up outdoors, be sure they are under cover
- Do not use or store the equipment near wet or damp places, it may cause a malfunction or shock hazard
- If the power cord is broken, it must be replaced by the manufacturer or service agent or qualified personnel to avoid risks
- To reduce the risk of fire or electric shock do not expose this equipment to rain or moisture
- Clean only with a soft, dry cloth

CAUTION:

This device complies with Part 15 of the FCC Rules. Operation is subject to the following two conditions:
(1) this device may not cause harmful interference, and
(2) this device must accept any interference received, including interference that may cause undesired operation

This device has been tested and found to comply with the limits for a Class B digital device, pursuant to Part 15 of the FCC Rules. These limits are designed to provide reasonable protection against harmful interference in a residential installation. This device generates, uses and can radiate radio frequency energy and, if not installed and used in accordance with the instructions, may cause harmful interference to radio communications.
However, there is no guarantee that interference will not occur in a particular installation. If this device does cause harmful interference to radio or television reception, which can be determined by turning the device off and on, the user is encouraged to try to correct the interference by one or more of the following measures:

- Reorient or relocate the receiving antenna.
- Increase the separation between the device and receiver.
- Connect the device into an outlet on a circuit different from that to which the receiver is connected.
- Consult the dealer or an experienced radio/TV technician for help

Changes or modifications not expressly approved by the party responsible for compliance could void the user's authority to operate the equipment

582SSA