



DUAL 10" & 15" 2-WAY P.A. SPEAKER
models: 4001942 / 4001944
USER MANUAL

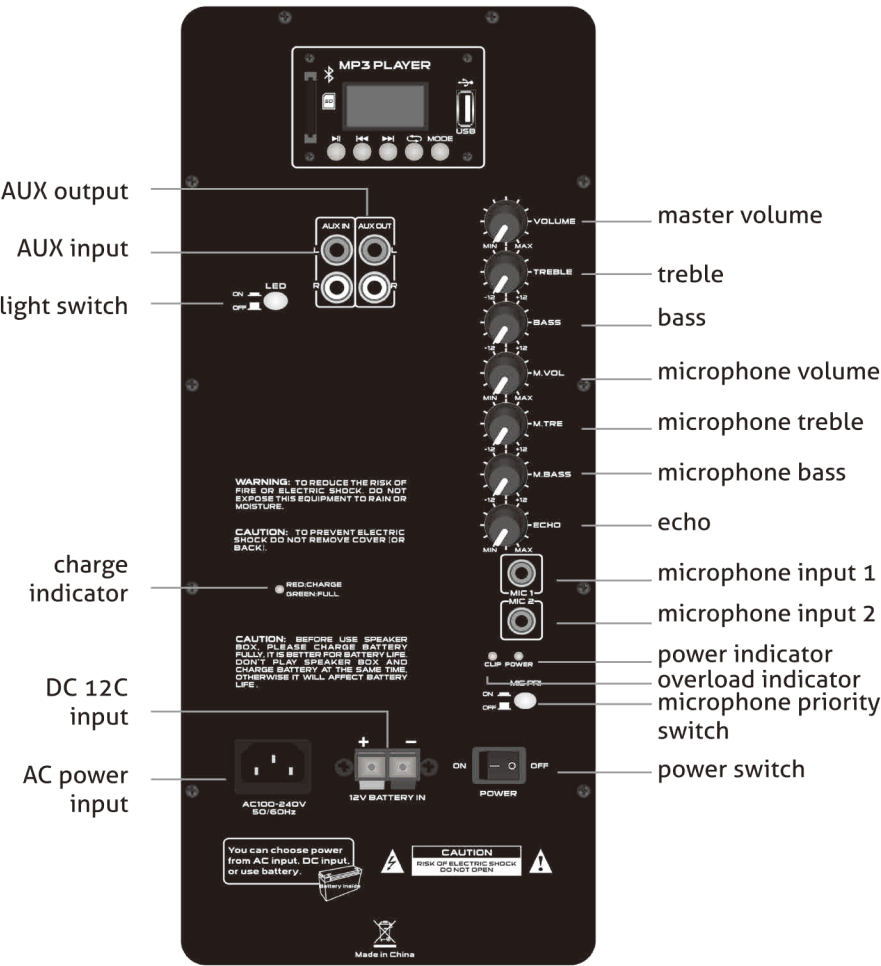


- PACKING CONTENTS
- 1x speaker
 - 1x remote control
 - 1x user's guide
 - 1x power cable

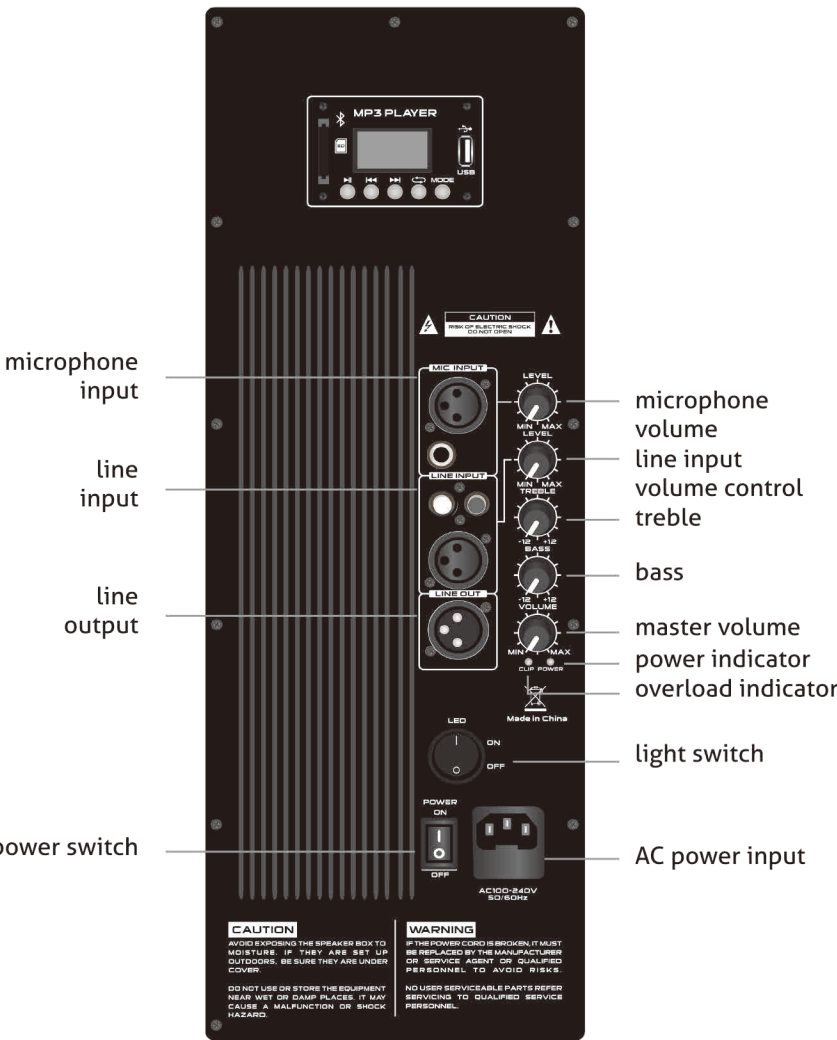
SPECIFICATIONS

MODEL	4001942	4001944
TYPE	active speaker	active speaker
AC INPUT	AC100-240V,50/60Hz DC12V, or battery	AC100-240V,50/60Hz
WOOFER	2x10"	2x15"
VOICE COIL	1.5" (38mm)	2" (50mm)
MAGNET	30Oz	40Oz
SENSITIVITY	95dB (+/-3dB)	99dB (+/-3dB)
FREQUENCY RESPONSE	50Hz-20KHz	50Hz-20KHz
TWEETER	25mm	25mm
POWER	150W	450W
FUNCTION	USB, SD, FM, Bluetooth	USB, SD, FM, Bluetooth
REMOTE CONTROL	Yes	Yes
BATTERY CAPACITY	12V, 5AH	N/A

AMPLIFIER 4001942 CONTROL PANEL

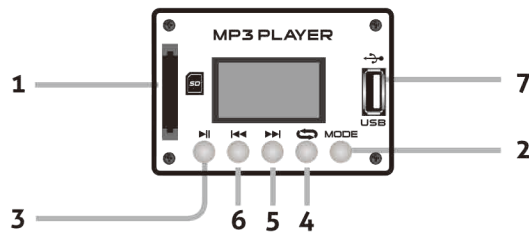


AMPLIFIER 4001944 CONTROL PANEL



513SSA

PLAYER CONTROLS



4001942

- 1. SD card slot: use it to insert a SD card with MP3 files
- 2. Model: select an operating modality, the options are SD, USB, FM
- 3. Play/pause: press to play a song or pause while playing a song
 - When you choose FM mode, when pressing this button it will automatically search the FM stations
- 4. Press once to select a player mode, the options are:
 - One: select this to play current song indefinitely
 - All: with this option you can repeat all music
 - Random: the songs will play in random order
- 5. Next/volume+: press once to jump next song/press and hold to raise the volume level
- In FM mode , press it go to next station
- 6. Previous/volume-: press once to jump previous song/ press and hold to diminish the volumen level
- In FM mode, press it jump to the previous stations
- 7. USB input with MP3 file

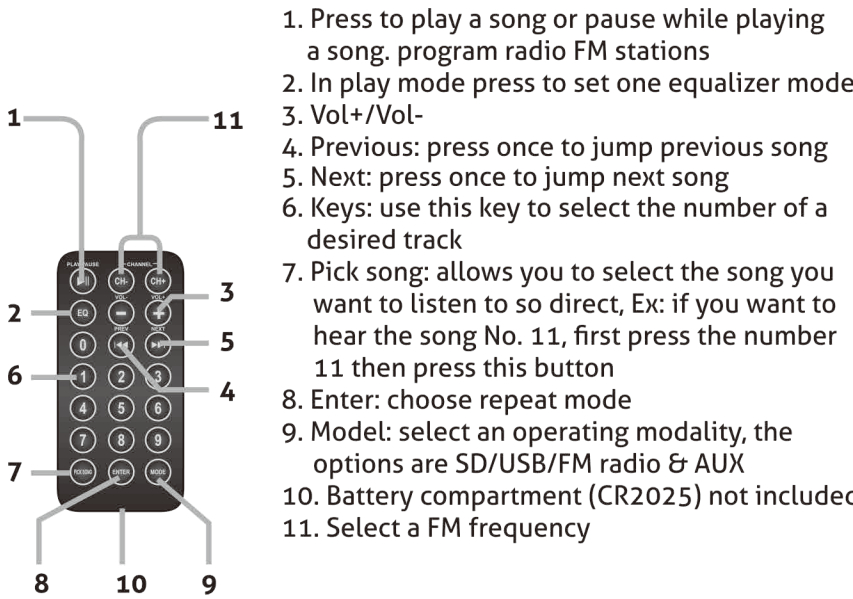
4001944

- 1. SD card slot: use it to insert a SD card with MP3 files
- 2. Model: select an operating modality, the options are SD or USB, FM
- 3. Play/pause: press to play a song or pause while playing a song
 - When you choose FM mode, when pressing this button it will automatically search the FM stations
- 4. Press once to select a player mode, the options are:
 - One: select this to play current song indefinitely
 - All: with this option you can repeat all music
 - Random: the songs will play in random order
- Repeat folder: select this to repeat all music file in this folder
- Press and hold: press and hold to enter into play mode, EQ mode, folder, delete files and return choice.
- Use the button 5 and 6 to backward and forward, button 3 choose it
- 5. Next/volume+: press once to jump next song/press and hold to raise the volume level
- In FM mode , press it go to next station
- 6. Previous/volume-: press once to jump previous song/press and hold to diminish the volume level
- In FM mode, press it jump to the previous stations
- 7. USB input with MP3 file

CONNECTION BLUETOOTH

- 1. To pair the speaker with a Bluetooth phone or audio device, press "MODE" repeatedly on the MP3 player until select this mode.
- 2. Put your phone or device to be used in Bluetooth device discovery mode.
- 3. When your phone or device shows the RS 4001942/ RS 4001944 name, confirm the link.

REMOTE CONTOL



CAUTION

- Avoid exposing the speaker box to moisture. If they are set up outdoor, be sure they are under cover
- Do not use or store the equipment near wet or damp places
- It may cause a malfunction or shock hazard.
- If the power cord is broken, it must be replaced by the manufacturer or service agent or qualified personnel to avoid risks
- To reduce the risk of fire or electric shock, do not expose this equipment to rain or moisture
- Clean only with a soft, dry cloth

CAUTION:

This device complies with Part 15 of the FCC Rules. Operation is subject to the following two conditions:
(1) this device may not cause harmful interference, and
(2) this device must accept any interference received, including interference that may cause undesired operation

This device has been tested and found to comply with the limits for a Class B digital device, pursuant to Part 15 of the FCC Rules. These limits are designed to provide reasonable protection against harmful interference in a residential installation. This device generates, uses and can radiate radio frequency energy and, if not installed and used in accordance with the instructions, may cause harmful interference to radio communications.
However, there is no guarantee that interference will not occur in a particular installation. If this device does cause harmful interference to radio or television reception, which can be determined by turning the device off and on, the user is encouraged to try to correct the interference by one or more of the following measures:
--Reorient or relocate the receiving antenna.
--Increase the separation between the device and receiver.
--Connect the device into an outlet on a circuit different from that to which the receiver is connected.
--Consult the dealer or an experienced radio/TV technician for help

Changes or modifications not expressly approved by the party responsible for compliance could void the user's authority to operate the equipment