



tecdesk

Model 6



User Manual

ENGLISH





ENGLISH

In order to make the best use of your Tecdesk **Model 6** SIM desk phone, please read this manual carefully. This phone is designed for use with a valid SIM card from your mobile network operator.

PLEASE READ CAREFULLY

Please do not use the device in oil and chemical factories, around inflammable and explosive objects and in places where the use of wireless transmission is NOT permitted.

Please turn OFF the phone when cleaning the device. Use a slightly damp or anti-static dish cloth to clean the device. Do NOT use a chemical cleaner to clean the surface of the device.

Do not expose the device into direct sun light and heat.

Use ONLY the original power adapter and batteries supplied with the device. Using other/non-genuine power adaptors, batteries and accessories may cause harm and damage and will void your warranty.

This device requires a SIM Card to function properly.

Please note that data may be restricted by your SIM Card Network Operator. If you have any problems with this, please check with your SIM Card Network Operator.

1.0 PRODUCT DESIGN





1.1 UNBOXING AND INSTALLATION

The box includes the following: -

- 1 x Model 6 SIM Desk Phone
- 1 x Receiver / Handset Cord
- 1 x Model 6 Stand
- 1 x USB Power Adaptor
- 1 x Battery
- 1 x User Manual (this document, also available online)

To set up your device, follow the steps below: -

1. Connect the Receiver to the device.
2. Carefully insert the SIM card into the SIM card tray located under the device screen.
3. Insert the battery correctly into the device.
4. Attach the stand to the device.
5. Connect the USB-C power adaptor to the device and plug into a power source.
6. Switch on the device.

1.2 SIM CARD

For this device to function properly, please ensure your SIM card is activated and data is enabled. Contact your SIM Card Network Provider for your SIM plan details.

When removing the SIM card from your device, please follow the below steps: -

1. Power OFF the device.
2. Remove the battery.
3. Remove the SIM card.

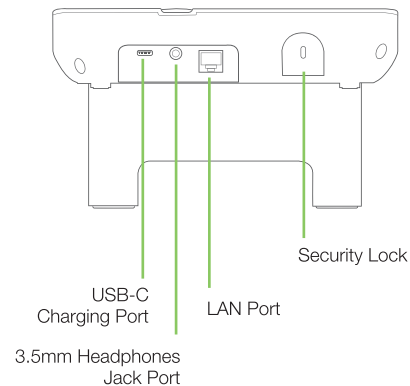
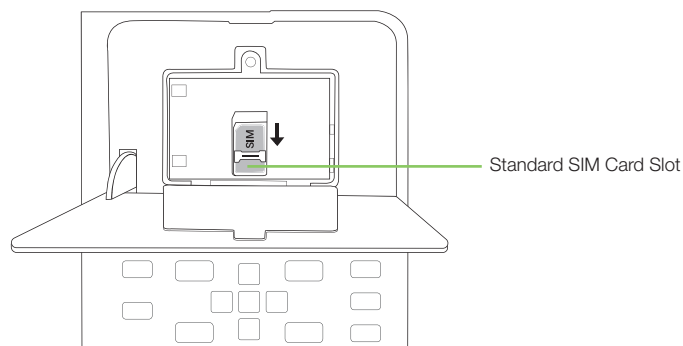
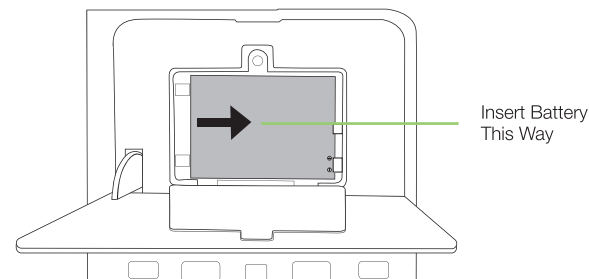
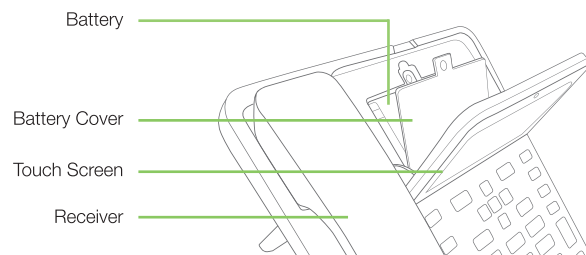
1.3 BATTERY

On first use, please charge your device (with battery inserted) for 15 hours before removing the power adaptor. Once complete, you may repeat this step 3 times to get the best efficiency from your battery. Please note that charging from a flat battery to full takes between 3 to 4 hours.



2. FUNCTIONALITY EXPLAINED







2.1 HARD KEYS AND THEIR FUNCTIONALITY

1. Touch Screen

You can use the touch screen to access the full functionality of the device including making calls, adding contacts, sending and receiving text messages, making notes, setting alarms and changing the settings of the device.

2. Go Back

Press this key once to go back 1 step. Press it again to go back another step. Repeat the process until you reach the home screen on the device.

3. Conference Call

During a call, press this key to create a conference call. Please note that these features are dependent on your SIM Card Network Provider.

4. Transfer Call

During a call, press this key to transfer the call to an internal or external number / telephone. Please note that these features are dependent on your SIM Card Network Provider.

5. Hold Call

During a call, press this key to place the caller on hold. From here, you can; add another caller to the original call or make a second call simultaneously while the original caller is on hold. Please note that these features are dependent on your SIM Card Network Provider.

6. Mute Call

Press this key to mute an active call. Press this key again to unmute the call.

7. Volume

Press this key to increase and decrease the volume.

8. Loudspeaker

Press this key to open the dialler in loudspeaker mode or convert a call from the handset receiver to loudspeaker.

9. Screen Navigation Keys

Use these keys to navigate through apps on the screen. Press the OK button to accept your selection.

10. Go to Home Screen

Press this key to take you back to the home screen.

11. End Call & Power ON / OFF

Press this key to end a call. Long press this key to power on the device. Long press this key to give you options to power off, reboot and select aeroplane mode. Aeroplane mode disables all connections including your voice and data.





12. Answer Call & Open Dialler

Press once to accept an incoming call or open the dialler to access speed dial, recent calls, contacts, and dial pad.

13. Quick Call

Press this key to dial out quickly according to the set number.

14. Camera

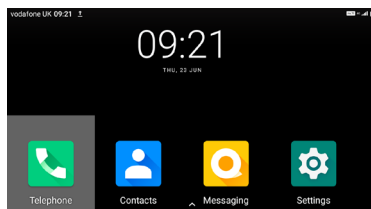
Front camera can be used for video calls.

2.2 ANDROID SCREENS AND THEIR FUNCTIONALITY

2.2.1 HOME SCREEN

Access: *Home Screen*

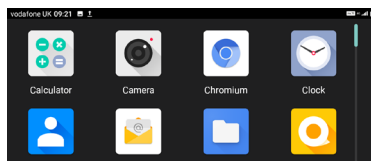
Access the following apps: Call, Contacts, All Apps, SMS, and Settings. Also view notifications at the top of the screen.



2.2.2 PRELOAD APPLICATIONS / APPS SCREEN

Access: *Home Screen > Swipe up from the Home Screen*

This will show all preloaded apps on screen.

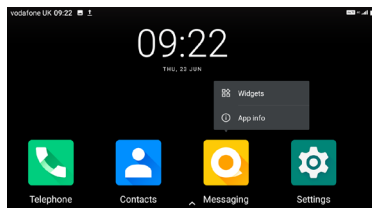




2.2.3 WIDGETS AND SHORTCUT SCREEN

Access: *Long press on the Applications*

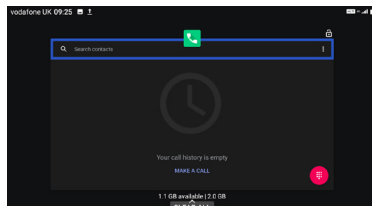
Long press the app that you would like a widget of.



2.2.4 TASK MANAGER SCREEN

Access: *Long press the Home Key on the Device*

Long press the home key to open the task manager. From here you can close all apps open in the background.

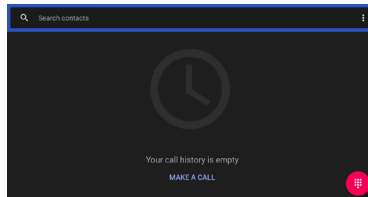
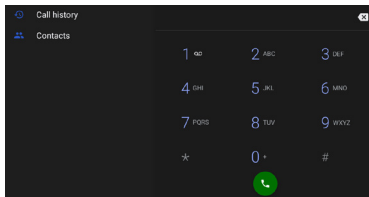


2.2.5 CALL OPTION SCREENS

Access: *Press the Call Key on the Device / Home Screen or choose the number from the Contacts and press the call icon*

Via Home Screen, start dialing on the dialer or on the screen dialer and press the green phone icon to start the call. Via Contacts type the name of your contacts or select the contact, or press the red dialler icon to type a number.

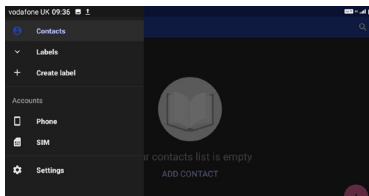




2.2.6 CONTACT SETTINGS

Access: *Contacts App > Three Lines*

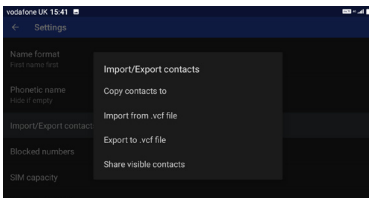
When in 'All Contacts', press the three lines icon at the top left of the screen to access the call settings. Please note that some of the settings and parameters are dependent on your Mobile Network Provider.



2.2.7 IMPORT / EXPORT

Access: *Contacts > Press the three lines at the top left corner > Settings > Import/Export Contacts*

This feature allows you to import from SIM card, import from storage, export to SIM card, export to storage, and share visible contacts.

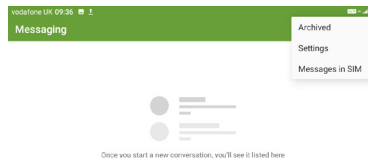
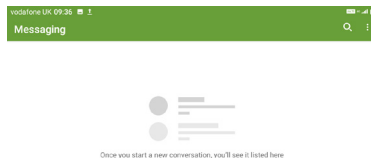




2.2.8 TEXT MESSAGES

Access: *Home Screen > Messages*

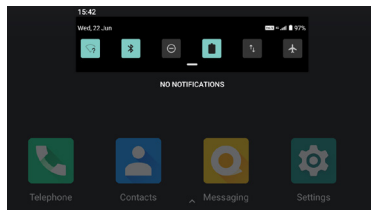
In the Messages app, it only supports receiving short messages and cannot create new ones.



2.2.9 NOTIFICATIONS

Access: *Home Screen > Swipe down from top of Screen*

You will receive notifications on your screen. To access these notifications simply swipe down from the top of the screen.

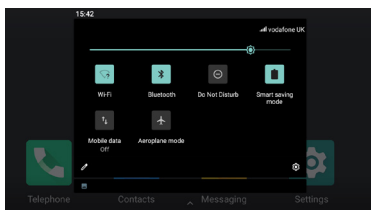




2.2.10 NOTIFICATIONS SETTINGS

Access: *Home Screen > Swipe Down from top of Screen > Swipe down even further*

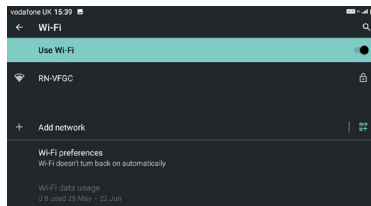
Swiping the screen further down will give you access to connection settings, including Wi-Fi/WLAN, Bluetooth, data, do not disturb, power saving mode, and airplane mode.



2.2.11 WIFI

Access: *Home Screen > Settings > Network & Internet > Wi-Fi*

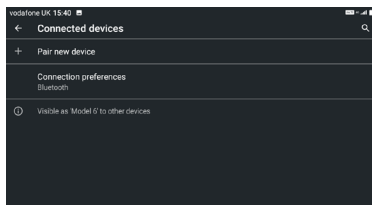
Search for available wireless networks and connect your device to the internet.



2.2.12 BLUETOOTH

Access: *Home Screen > Settings > Connected Devices*

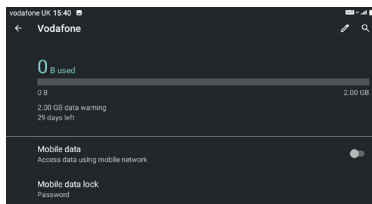
Connect headsets, earphones, and/or other Bluetooth devices to your phone.



2.2.13 DATA USAGE

Access: *Home Screen > Settings > Network & Internet > Mobile Network*

From here, you can turn your mobile data ON and OFF, monitor your mobile data usage and set mobile data limits.



2.2.14 DISPLAY SETTING

Access: *Home Screen > Settings*

From here, you can access all the general settings of the device, including brightness, wallpaper, font size, screen saver, etc.

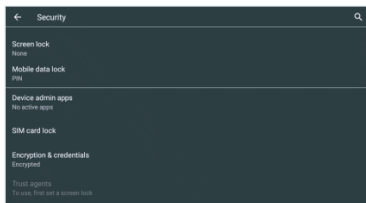




2.2.15 SCREEN LOCK

Access: *Home Screen > Settings > Security*

Set a screen lock password so that only you can access your device via a password, pin, or pattern.



3.0 CONNECTIVITY

3.1 WIFI HOTSPOT

Access: *Home Screen > Settings > Network & Internet > Hotspot & Tethering > Wi-fi Hotspot*

This feature allows you to use your device as a data hotspot to allow other devices to connect to the internet. Please note that mobile data must be turned ON to allow for the Wi-Fi hotspot to work.

4.0 WORKING FREQUENCIES

GSM: 900/1800MHz
WCDMA: B1/B8
LTE-FDD: B1/B3/B7/B20
LTE-TDD: B38/B40

5.0 SUPPORT

If you are a business and require support with this device, please email b2bsupport@tecdesk.com



SAFETY INSTRUCTIONS

Before using the phone, please read the safety instructions carefully.

Safety Warnings

1. The working temperature is from -10 to 55 degree Celsius.
2. In each country there may be different rules in force regarding the use of mobile phones (for example, while driving, hospitals, service stations or aircraft).
3. Observe the laws regarding the use of existing mobile phones at home and turn off the device when its use is prohibited or when it may cause interference or dangerous situations.
4. Use the device only in accordance with its intended use and only in places where a phone call is not dangerous.
5. Use the power adapter and battery as supplied or recommended by manufacturer. The risk of explosion may increase if an unsuitable or unauthentic adapter is used. The battery should never be opened or exposed to flames. Dispose the used batteries according to the current guidelines and regulations.
6. The correct operation of medical appliances may be altered by the use of mobile phones. Pacemaker manufacturers recommend that a minimum distance of 20cm between devices when the mobile phone is on. Do not carry your phone in your pocket or near your chest.

Attention

1. Do not expose the phone to moisture or extreme heat (strong sunlight or direct radiation), or cold (persistent frost).
2. Do not drop the unit and avoid subjecting it to shock, impact or pressure.
3. The phone may cause interference to nearby televisions, radios and other electrical appliances.4. Do not ever spray with spray cleaners as it can penetrate through the holes and damage the appliance.



Hearing Protection



Adjust the volume to a moderate level. Continuous exposure to high volume may impair your hearing.

Environmental Recycling

1. Never dispose of the phone with household waste.
2. Ask your governing authority about suitable methods of disposal which minimize the risk to the environment. The cardboard box, the plastic contained in the packaging and the pieces in the mobile phone can be recycled in accordance with the rules in force on recycling.
3. Always follow the existing rules on the subject.
4. Violators are subject to sanctions and measures established by law.



The bin symbol and cross, located on the device means that when the equipment has reached the end of its useful life, it must be brought to collection centers, and that treatment must be separated from urban waste. To protect the environment, when you replace the batteries, remember to use public recycling bins specified for batteries.

For more information, please visit www.tecdesk.com.

FCC Warning

This device complies with part 15 of the FCC Rules. Operation is subject to the following two conditions: (1) This device may not cause harmful interference, and (2) this device must accept any interference received, including interference that may cause undesired operation.

Any Changes or modifications not expressly approved by the party responsible for compliance could void the user's authority to operate the equipment.

Note: This equipment has been tested and found to comply with the limits for a Class B digital device, pursuant to part 15 of the FCC Rules. These limits are designed to provide reasonable protection against harmful interference in a residential installation. This equipment generates uses and can radiate radio frequency energy and, if not installed and used in accordance with the instructions, may cause harmful interference to radio communications. However, there is no guarantee that interference will not occur in a particular installation. If this equipment does cause harmful interference to radio or television reception, which can be determined by turning the equipment off and on, the user is encouraged to try to correct the interference by one or more of the following measures:

- Reorient or relocate the receiving antenna.
- Increase the separation between the equipment and receiver.
- Connect the equipment into an outlet on a circuit different from that to which the receiver is connected.
- Consult the dealer or an experienced radio/TV technician for help.

Specific Absorption Rate (SAR) information:

This Tecdesk Model 6 meets the government's requirements for exposure to radio waves. The guidelines are based on standards that were developed by independent scientific organizations through periodic and thorough evaluation of scientific studies. The standards include a substantial safety margin designed to assure the safety of all persons regardless of age or health.

FCC RF Exposure Information and Statement

The SAR limit of USA (FCC) is 1.6 W/kg averaged over one gram of tissue. Device types: Tecdesk Model 6 (FCC ID: 2BDUK-MODEL6) has also been tested against this SAR limit. The highest SAR value reported under this standard during product certification for worn on the body is 1.279W/kg.

Body-worn Operation

This device was tested for typical body-worn operations. Use only the supplied or an approved antenna.

CE Maintenance

1. Risk of explosion if battery is replaced by an incorrect type. Dispose of used batteries according to the instructions.
2. The product shall only be connected to a USB interface of USB2.0.
3. Adapter shall be installed near the equipment and shall be easily accessible.
4. EUT Operating temperature range: -10° C to 55°C .
5. Adapter: The plug considered as disconnect device of adapter
Power supply and ADP(rating):
Input: DC 5V 1.0A
6. The device complies with RF specifications when the device used at 5mm you're your body.
7. To prevent possible hearing damage. Do not listen at high volume levels for long periods.

Declaration of Conformity

Tecdesk (UK) Ltd. hereby declares that this Tecdesk Model 6 is in compliance with the essential requirements and other relevant provisions of Directive 2014/53/EU. In accordance with Article 10(2) and Article 10(10), This product is allowed to be used in all EU member states.





tecdesk.com



June 2022