

Call forward

1. Press Phone Settings icon > Line > Select the line > Forward Settings
2. Enter the destination number and the type of forward and press OK icon .

Call list

1. Press Call Logs icon .
2. Scroll the list using navigation key or slide the screen
3. To dial an entry, press Dial icon or click the phone icon at left then click dial icon or pickup handset or press or .

Phonebook

Access phonebook:

1. Press Contact icon .
2. Select All Contacts or other group.
3. To dial an entry, press Dial icon .

Add new entry:

1. Press Contact icon , Press All Contacts or other group > Press Add icon.
2. Enter name and number and press OK icon .

Programmable keys

DSS virtual keys :

1. You can use the phone web interface to configure the keys of the screen.
2. Press unfold > you can press any keys which is still blank or long press the key that have configured, select a type and value, press .

Other keys :

1. You can also configure shortcuts for the navigation keys and softkeys on web ui.
2. You can press Phone setting icon > Key, select the SoftkeyScreen you need, then select among the configurable items, and select your desired type and value, press Save.

Redial

1. Press , redial a call number.

Do not disturb

1. Press DND icon when standby or click Phone Settings icon > DND.
2. Select the Mode.

Voice message

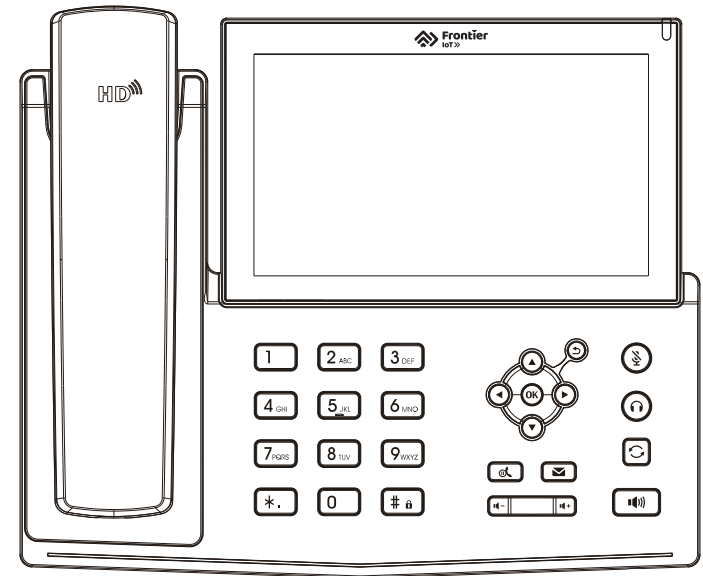
1. To access your voice mailbox, press Voice message key or Voice message icon , number of message be indicated if provided by your server or PBX.
2. Select the line and press phone icon to call.

Bluetooth

1. Press Bluetooth icon in the status bar to open Bluetooth.
2. Press Settings icon > Connected devices > Pair new device. After opening, it displays the scanned Bluetooth list, select any device, and click on the device pairing.

Wi-Fi

1. Enter the Settings icon > Network & internet > Wi-Fi, enable Wi-Fi, and you can browse the list of available Wi-Fi;
2. Select the available network, click on the network to enter the password to connect and click connect button.



DT-200D

Quick Installation Guide

Regulatory Compliance Federal Communication Commission (FCC) — USA

Federal Communication Commission (FCC) — USA. This device complies with Part 15 of FCC Rules. Operation is subject to the following two conditions: (1) this device may not cause harmful interference, and (2) this device must accept any interference received, including interference that may cause undesired operation. This equipment has been tested and found to comply with the limits for a Class B digital device, pursuant to Part 15 of the FCC Rules. These limits are designed to provide reasonable protection against harmful interference in residential installation. This equipment generates, uses, and can radiate radio frequency energy, and if it is not installed and used in accordance with the instruction manual, it may cause harmful interference to radio communications. However, there is no guarantee that interference will not occur in a particular installation. If this equipment does cause harmful interference to radio or television reception, which can be determined by turning the equipment off and on, the user is encouraged to try to correct the interference by one or more of the following measures:

- Reorient or relocate the receiving antenna.
- Increase the separation between the equipment and receiver.
- Connect the equipment into an outlet on a circuit different from that to which the receiver is connected.
- Consult the dealer or an experienced radio/TV technician for help.

Warning: Any changes or modifications to this unit not expressly approved by the party responsible for compliance could void the user's authority to operate the equipment. FCC Radiation Exposure Statement: The equipment complies with FCC Radiation exposure limits set forth for uncontrolled environment. This equipment should be installed and operated with minimum distance 20cm between the radiator and your body.

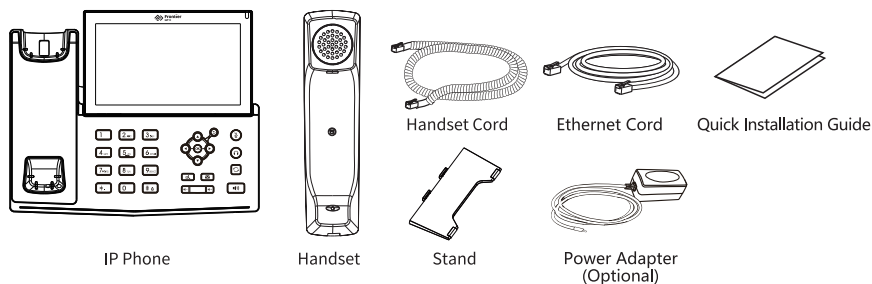
This equipment complies with Part 68 of the FCC rules and the requirements adopted by the ACTA. On the bottom of this equipment is a label that contains, among other information, a product identifier in the format US: FROIPNANDT200. If requested, this number must be provided to the telephone company.

Frontier IoT Inc.

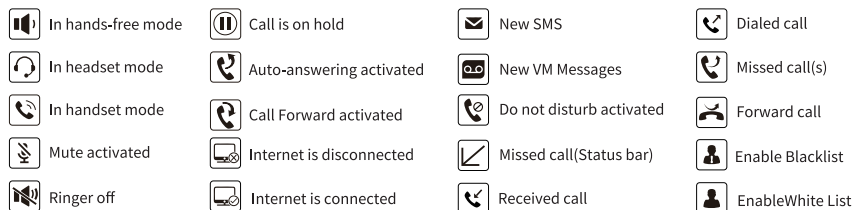
Email: sales@frontieriot.com support@frontieriot.com
Add: 19800 MacArthur Blvd Suite 300, Irvine, CA 92612

Frontier IoT Inc.

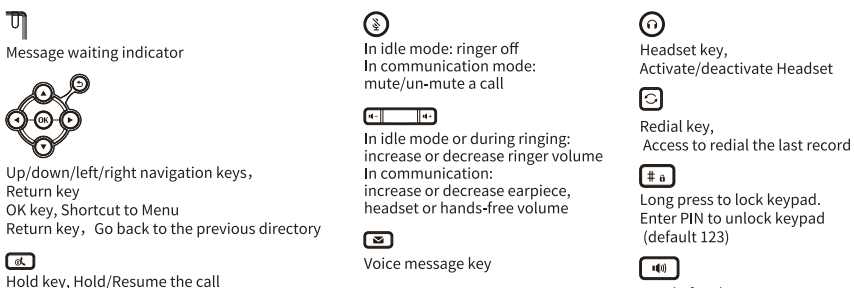
Packaging list



Screen icon



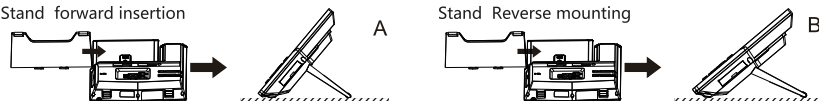
Keys features



Installation the device

Bracket desktop installation

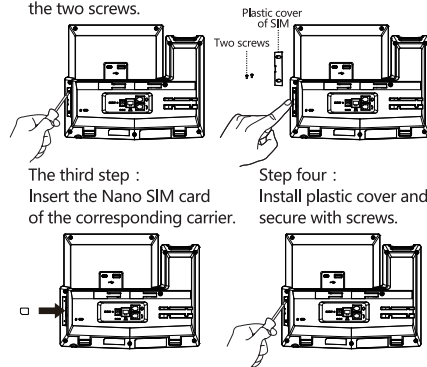
Stand forward insertion



SIM card installation

First: Using a Phillips screwdriver, remove the two screws.

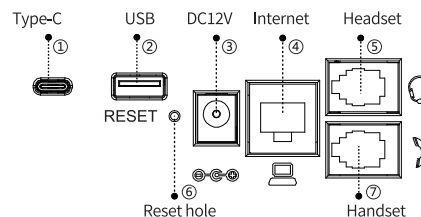
The second step:
Lift the plastic cover of SIM.



Connecting to the Device

Connect the power adapter, network, phone handle, and headset to the appropriate port as described in the following figure.

- ① Type-C interface : USB extended use
- ② USB interface: Connect USB device (U disk)
- ③ Power port : Connect the power adapter
- ④ Network interface : connects to the LAN and the Internet
- ⑤ Headphone jack : Connects headphones
- ⑥ Reset hole: used for hardware reset
- ⑦ Handle port: Connects to the phone handle



Configuration

Configuration via Phone

1. Press Phone Settings icon
2. Select Ethernet Settings: To configure the Network Settings (DHCP/Static)
3. Select Line: To configure enable the account, fill the SIP server address, port, user name, password etc.

Configuration via Web

1. Get the IP address from the phone: Press Phone Settings icon > Common.
2. Login: Input the IP address in the web browser. The PC and phone should be in the same IP address segment (The default username and password are both 'admin' .)
3. Configure: Select network/Account, etc. And fill the relevant content.

Language setting

1. Press Settings icon > System > Language & Input > Languages.
2. Select the desired language.

Making a call

1. **Pre-dialing:** enter the phone number and pick up the handset.
2. **Direct dialing:** lift the handset and enter the phone number.
3. **Handsfree:** enter phone number and press or vice versa.
4. **Headset:** enter phone number and press or vice versa.
5. **Dial icon:** Click dial icon and then enter the phone number.
6. **Designated line:** press line key, enter phone number and press dial key.

Accepting a call

1. **With the handset:** pick up the handset.
2. **With a headset:** press .
3. **With the handsfree:** press .

Putting a call on hold

1. Press key or Hold icon, caller is put on hold.
 2. To retrieve the call press key or Resume icon.
- Note:** with more than one active call, select desired call by sliding screen and use the corresponding icon to hold or resume.

3-party conference

1. Once in line with 1st caller, press , 1st caller is put on hold.
2. Then call the 2nd number.
3. After, 2nd call is established, press Conference icon to set up the conference.

Call transfer

Attended transfer:

1. Press Xfer icon during the active conversation, the call is put on hold.
2. Dial the second telephone number.
3. When the call is answered, then press Xfer icon to complete the operation.

Blind transfer:

1. Press Xfer icon during the active conversation, the call will be on hold.
2. Then enter the 2nd telephone number and press Xfer icon.

Call Mute

1. Press to Mute the microphone during the call.
2. Press again to un-mute the conversation.