



# SMART DISPLAY

Smart Mobile Smart Screen  
Users' Manual

Product Modle:H01



●This device complies with Part 15 of the FCC Rules. Operation is subject to the following two conditions:

- (1) This device may not cause harmful interference, and
- (2) this device must accept any interference received, including interference that may cause undesired operation

●Changes or modifications not expressly approved by the party responsible for compliance could void the user's authority to operate the equipment

●This equipment has been tested and found to comply with the limits for a Class B digital device, pursuant to Part 15 of the FCC Rules. These limits are designed to provide reasonable protection against harmful interference in a residential installation

## Preface

Welcome to use the smart portable screen

Before turning on the machine, please read this manual carefully to understand the usage and precautions of this product.

## Notice

1. When cleaning the smart portable screen, please unplug the power cord and turn off the power switch. Do not use liquid cleaning fluid or spray cleaner. Wipe the screen with a soft damp cloth. If it is still not clean, use LCD screen cleaner.
2. Do not use accessories not recommended by the manufacturer, otherwise it may cause danger.
3. When unplugging the power cord connected to the chassis power adapter, please hold the power plug with your hand and unplug the power cord. Do not directly pull the power cord to unplug it with your hand.
4. If the following situations occur, please unplug the power plug of the power adapter and contact a qualified maintenance personnel for repair:
  - a. The power cord or power plug is damaged or worn.
  - b. The smart portable screen falls or the casing is damaged.
  - c. When the display is obviously abnormal, it indicates that it needs to be repaired.
5. Please place the display in a well-ventilated environment and avoid strong light, high temperature or humidity.
6. Please store the display at room temperature 0℃~40℃ and below 5000 meters above sea level. If it exceeds this range, it may affect normal use.

## Important Tips

- The gaps and openings on the machine are used for ventilation and heat dissipation. Do not block or cover these gaps and openings.
- When the machine fails, do not disassemble and repair it by yourself. You need to contact the original manufacturer or dealer to solve it.
- Avoid stepping on the power supply or power adapter to avoid dangers such as leakage caused by the wire. If the wire of the power adapter is damaged, do not continue to use it, otherwise it may be dangerous.
- Unplug the power cord during thunderstorms or when the machine is not used for a long time.
- Do not squeeze the display screen hard during transportation, and do not use sharp tools or hard objects to damage the display screen to avoid damage to the display screen.
- Be sure to let children know the dangers of climbing this product. This product falling or tipping over will cause serious personal injury. Do not place the product in an unstable or tilted position.
- Be sure to organize the cables connected to the product in time to avoid tripping, pulling or grabbing

Note: If consumers use a power adapter to charge, they should purchase a power adapter that is CCC certified and meets standard requirements

## Product specification

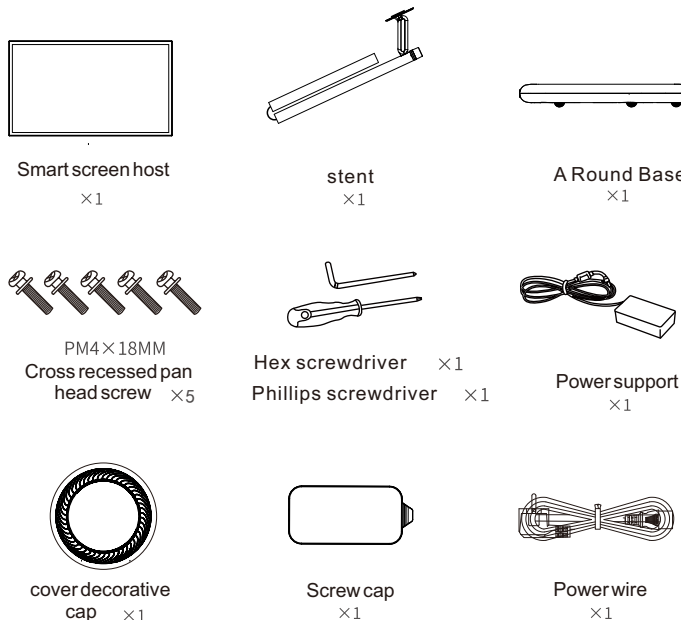
Product Name:Smart display

Product Modle:H01

Input voltage:DC 15V≈2.4A(36W MAX)

Product color:grey/white(The product body color is optional)

## Accessories list



If any of the above is missing, please contact the product distributor.

Note: Please refer to the actual configuration for specific accessories. Please keep all packaging materials for future use.

## Product Specification

Operating System	Android 13
CPU	octa-core 4*ARM Cortex A73@2.0GHz
	4*ARM Cortex A53@2.0GHz
RAM	6GB
Hard Disk	128GB
Screen Size	27inch
Resolution	1920x1080 IPS
Proportion	16:9
Brightness	300-350cd/m²
Color gamut	100%SRGB
Refresh rate	60HZ
Point of touch	Capacitive touch screen
Multiple touch points	10
Wireless connection	Support 2.4G/5G/Bluetooth 4.2
Microphone input	Support external microphone input
Speaker	4Ω 5W Bass stereo horn*2
Screen projection	Wireless projection screen, on-line projection screen
Button	Power/Volume+/Volume-
Camera	Optional 8MP Front Camera/ NO
Type-c	Support t OTG
USB interface	USB 2.0 Multimedia
HDMI interface	Supports up to 1080P ···Support laptop
Power supply	11.1V 9000 mAh
Power adapter	AC IN 100~240V DC OUT 15V 2.4A
Stand	Removable base, +/-90° swivel with 200mm up/down adjustment
Working temperature	0~40℃

## Product Installation

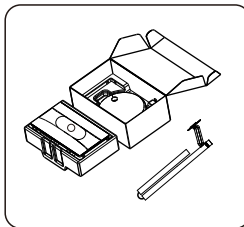
During assembly, please be sure to tighten the screws at all locations. If the product falls, it may cause damage to the product or personal injury.

The product has a certain weight. Please ensure that at least two people work together to assemble it during unpacking and installation.

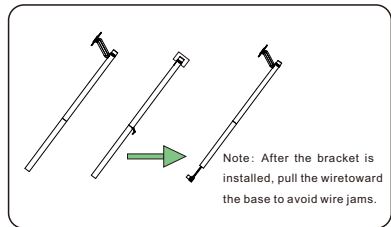
Do not use foreign objects (oil, lubricant) on the screws when assembling the product.

After the product is installed, do not remove the base screws.

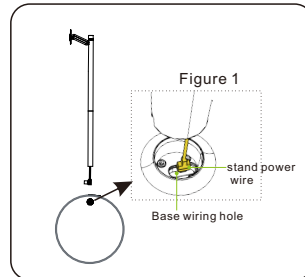
During daily use, please ensure that the product is moved in an upright position. If the product is tilted too much, there is a risk of tipping over, which may cause product failure or personal injury.



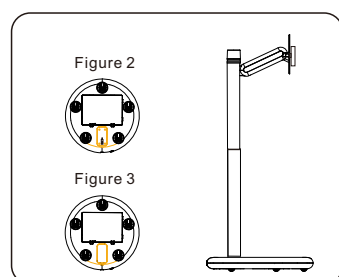
01 Take out the bracket and smart display from the packaging box, Place the screen on the foam cushion



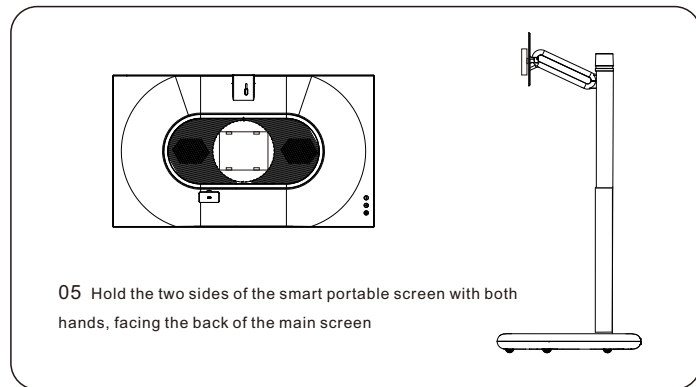
02 align the two bracket sections, and then tighten the cylindrical hexagon socket bolts with a hexagon socket screwdriver.



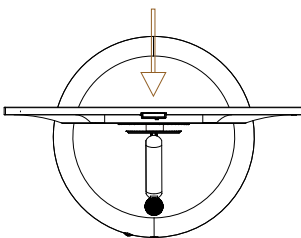
03 Assemble the assembled stand with the circular chassis, pass the stand power cord through the base wire hole and connect them together - as shown in Figure 1



04 lock the 4 fixing screws in Figure 2 cover the bottom screw cover - as shown in Figure 3

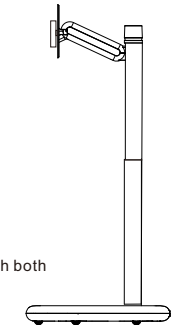
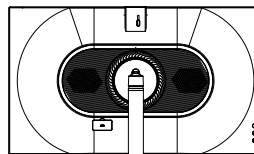


05 Hold the two sides of the smart portable screen with both hands, facing the back of the main screen



06 with the main screen at the top and the camera facing upwards, insert the main unit card into the bracket, and then push it horizontally into the buckle to fix the main screen on the mobile bracket

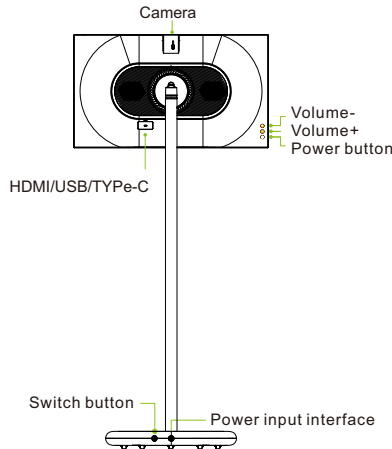
07 Screw on the decorative cover of the rear shell to complete the assembly of the whole machine. Connect the power cord to start the machine.



Product introduction

1. Press and hold the power button for 3 seconds, wait for the device to boot up, and then enter the system before use
- Note: 1. If the device cannot be turned on due to low battery, please charge the device with a power adapter
2. Short press to shut down: prompts to select three modes: restart/shutdown/screen off

Keys and Interfaces



Power button:Press to enter shutdown confirmation : off screen/shutdown/restart

volume+:Press to enter system volume increase

volume-:Press to enter system volume decrease

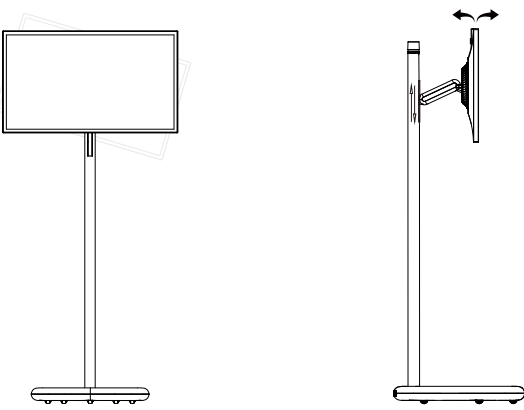
camera:Press the camera cover, the camera rises slowly; press again to reset the camera

peripheral Open the back cover port protector, you can connect HDMI/USB/TYPE-C devices

Switch Button Power main switch, turn to ON to connect power, turn to OFF to disconnect power

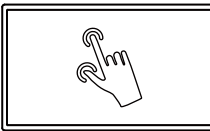
Power input interface Connect the power adapter to charge the entire machine.

Angle adjustment



- 1.For better viewing effect,Adjustable tilt: rotate 90 degrees left and right,
- 2.Move up and down 200MM

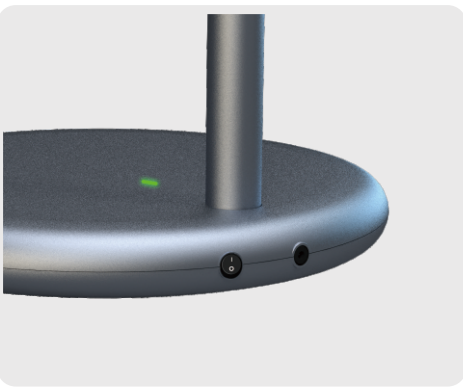
Touch Function



- 1.Adopt capacitive touch screen (G+G full paste) ,
- 2.support 10-point touch
- 3.Supports writing with fingers, stylus, and conductive objects

Battery

This product contains a built-in battery in the **round base**, which can be used for a period of time without connecting to other power sources. The battery indicator lights up in different colors depending on the amount of battery power remaining. Battery LED blinks green during charging and lights up green when fully charged.



- Green light on, full power
- Red light on, low battery

Red light blinking or light does not come on no battery power

Green light blinks when charging, green light always on when fully charged

1. It takes about 4 hours from the battery is depleted to fully charged, and about 10 hours to charge while using
2. As the product usage time increases, the battery life and endurance time decrease
3. In order to extend the battery life, it is recommended to charge the battery after using it for a period of time, and unplug the charger after it is fully charged
4. Do not keep the battery fully charged all the time, and the battery cannot be charged in a risky environment

The standard usage time in the manual is based on laboratory test data, and the actual time will vary depending on the conditions and environment of use

Notice

It is strictly forbidden for users to replace or disassemble the battery pack without permission to avoid the risk of damage to the entire device or safety accidents caused by improper installation or use of unsuitable batteries. If necessary, please contact the manufacturer for processing.

Declaration of Toxic and Hazardous Substances in Electronic InformationProducts

Part No	Toxic and Hazardous Substances or Elements					
	Lead (Pb)	Mercury (Hg)	Cadmium (Cd)	Hexavalent chromium (Cr <sup>6+</sup> )	PBBs (PBB)	Polybrominated Diphenyl ethers (PBDE)
Accessory	×	○	○	○	○	○
Plastic Case	○	○	○	○	○	○
Metal Parts	○	○	○	○	○	○
PCB Board	○	○	○	○	○	○
LCD Screen Display	○	○	○	○	○	○
Lithium Polymer Battery	○	○	○	○	○	○
Touch Screen	○	○	○	○	○	○
Speaker	○	○	○	○	○	○
Package	○	○	○	○	○	○

This table is prepared in accordance with the provisions of SJ/T 11364

○: Indicates that the content of the hazardous substance in all homogeneous materials of the component is within the limit specified in GB/T 26572

×:Indicates that the content of the hazardous substance in at least one homogeneous material of the component exceeds the limit specified in GB/T 26572

The "Environmental Protection Trial Period" will be printed on electronic and electrical products sold in the People's Republic of China. The number in the circle represents the normal environmental protection use period of the product.

Some parts contain harmful substances that cannot be replaced at the current level of technology. We are working tirelessly to replace them.

Warranty Specification

WARRANTY

1. We provide for one year-free warranty from the date of purchase or as agreed in the contract.

2. The free war anty service will not be included as follows:

- Fault or damage caused by man-made or natural disasters.
- Break down caused by failure to follow the instructions and precautions.
- Failure caused by the user disassembling the machine by himself.

3.The responsibility of the warranty is limited to maintenance of the products only.

4. Please feel free to call us if there is any unclear about the maintenance and guarantee after the warranty period.

Warranty Card

Warranty for product

Customer		Tel	
Address			
Model No			
Part No			
Purchase date			

\* Please keep this card properly as a maintenance proof

For the replacement of a battery, the elements of the instructional safeguardshall be as follows:

- Do not replace battery with an incorrect type.
- Do not disposal battery into fire or a hot oven, or mechanically crushingor cutting of abattery,that can result in an explosion.
- Do not leaving battery in an extremely high temperature surrounding environment that canresult in an explosion or the leakage of flammable liquid or gas.
- Do not leaving battery subjected to extremely low air pressure that mayresult in an explosionor theleakage of flammable liquid or gas.
- Do not used in low air pressure at high altitude condition!
- Do not used in high or low extreme temperatures.

SMART DISPLAY



NOTE: This equipment has been tested and found to comply with the limits for a Class B digital device, pursuant to Part 15 of the FCC Rules. These limits are designed to provide reasonable protection against harmful interference in a residential installation. This equipment generates, uses and can radiate radio frequency energy and, if not installed and used in accordance with the instructions, may cause harmful interference to radio communications. However, there is no guarantee that interference will not occur in a particular installation. If this equipment does cause harmful interference to radio or television reception, which can be determined by turning the equipment off and on, the user is encouraged to try to correct the interference by one or more of the following measures:

- Reorient or relocate the receiving antenna.
  - Increase the separation between the equipment and receiver.
  - Connect the equipment into an outlet on a circuit different from that to which the receiver is connected.
  - Consult the dealer or an experienced radio/TV technician for help.
- To maintain compliance with FCC's RF Exposure guidelines, This equipment should be installed and operated with minimum distance between 20cm the radiator your body: Use only the supplied antenna.

FCC ID: 2BDTM-H01