

# Video Intercom Indoor Station

Operation Manual

## Disclaimer

TO THE MAXIMUM EXTENT PERMITTED BY APPLICABLE LAW, THIS MANUAL AND THE PRODUCT DESCRIBED, WITH ITS HARDWARE, SOFTWARE AND FIRMWARE, ARE PROVIDED "AS IS" AND "WITH ALL FAULTS AND ERRORS". OUR COMPANY MAKES NO WARRANTIES, EXPRESS OR IMPLIED, INCLUDING WITHOUT LIMITATION, MERCHANTABILITY, SATISFACTORY QUALITY, OR FITNESS FOR A PARTICULAR PURPOSE. THE USE OF THE PRODUCT YOU AGREE TO USE THIS PRODUCT IN COMPLIANCE WITH ALL APPLICABLE LAWS, AND YOU ARE SOLELY RESPONSIBLE FOR ENSURING THAT YOUR USE CONFORMS TO THE APPLICABLE LAW. ESPECIALLY, YOU ARE RESPONSIBLE, FOR USING THIS PRODUCT IN A MANNER THAT DOES NOT INFRINGE ON THE RIGHTS OF THIRD PARTIES, INCLUDING WITHOUT LIMITATION, RIGHTS OF PUBLICITY, INTELLECTUAL PROPERTY RIGHTS, OR DATA PROTECTION AND OTHER PRIVACY RIGHTS. YOU SHALL NOT USE THIS PRODUCT FOR ANY PROHIBITED END-USES, INCLUDING THE DEVELOPMENT OR PRODUCTION OF WEAPONS OF MASS DESTRUCTION, THE DEVELOPMENT OR PRODUCTION OF CHEMICAL OR BIOLOGICAL WEAPONS, ANY ACTIVITIES IN THE CONTEXT RELATED TO ANY NUCLEAR EXPLOSIVE OR UNSAFE NUCLEAR FUEL-CYCLE, OR IN SUPPORT OF HUMAN RIGHTS ABUSES. IN THE EVENT OF ANY CONFLICTS BETWEEN THIS MANUAL AND THE APPLICABLE LAW, THE LATTER PREVAILS.

## Content

Disclaimer .....	1
1 Foreword .....	3
1.1 About this Manual .....	3
1.2 Safety Instruction .....	3
2 Product introduction .....	4
2.1 General function .....	4
2.2 Specification .....	4
2.3 Appearance .....	4
3 Main Menu .....	7
3.1 General setting .....	7
3.2 Network setting .....	8
3.3 HDD Management .....	9
3.4 Add IP Camera .....	10
3.5 P2P .....	11
3.6 Play back .....	11
3.7 Record setting .....	13
3.8 Record backup .....	14
3.9 System upgrade .....	15
4 Answer and unlock .....	16
4.1 Answer and unlock .....	16
Appendix .....	17

# 1 Foreword

## 1.1 About this Manual

This manual is applicable to the use and operation instructions of the video intercom indoor station..

## 1.2 Safety Instruction

### Notice

- When installing this product, all electrical safety regulations of the country and region must be strictly observed.
- Please do not drop the device or vibrate it vigorously, and keep the device away from places where there is magnetic interference. Avoid mounting the device where surfaces are subject to vibration or shock (ignoring this may damage the device).
- Please use the power adapter provided by the regular manufacturer.
- Do not connect multiple devices to one power adapter to avoid serious hazards such as overheating or fire caused by overloading the adapter.
- Please disconnect the power supply during wiring, disassembly and other operations, and do not operate with electricity.
- When installing the device to the wall, make sure that the device is securely fastened.
- If the device emits abnormal noise, smoke or smells, please turn off the power immediately, disconnect the power, and contact the service center.
- If the device is not working properly, please contact the store where you purchased the device or the nearest service center and do not disassemble or modify the device in any way. (The company is not responsible for problems caused by unauthorized modifications or repairs.)
- Equipment used indoors should not be installed exposed to rain or very humid places.

## 2 Product introduction

### 2.1 General function

1. Product application:

- Video intercom: support video calling, video monitoring, unlocking, video recording and call record query
- Security alarm: support 2 alarm inputs and 1 alarm output
- Support Tuya Smart APP

2. Operating system: Linux system

### 2.2 Specification

- Working voltage: DC12V
- Rated power: <10W
- Display: 10.1 inch display
- Touch screen: capacitive touch screen
- Resolution: 1280\*800
- Working temperature:  $-10^{\circ}\text{C} \sim 55^{\circ}\text{C}$
- Working humidity: 10%~90%

### 2.3 Appearance

#### Front panel



Figure 2-1 Front panel

Table 2-1 Front panel description

Serial number	Description
1	10.1 inch touch screen
2	Microphone

## Back panel

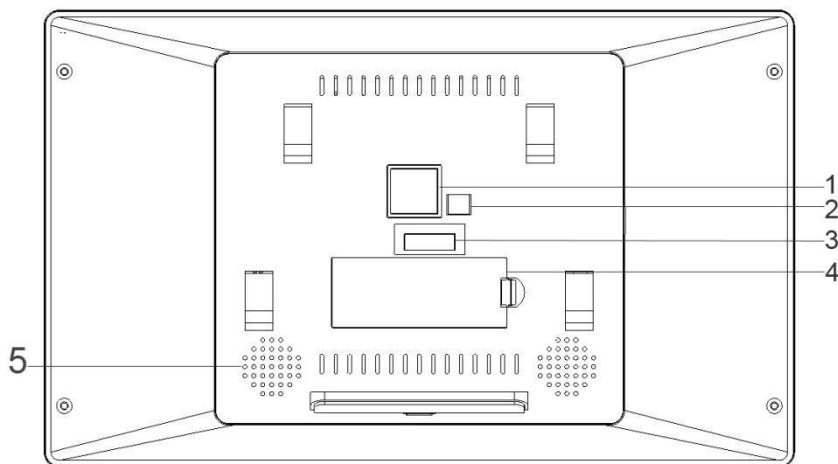


Figure 2-2 Back panel

Table 2-2 Back panel description

Serial number	Description
1	RJ45
2	DC 12 V
3	Terminals
4	SSD
5	Speaker

## Side panel

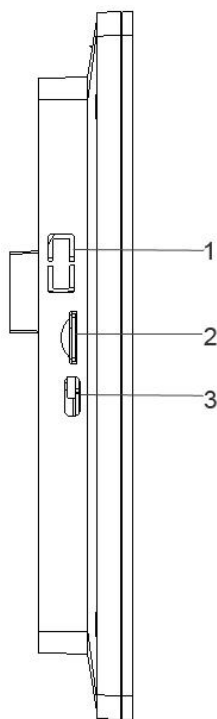


Figure 2-3 Side panel

Table 2-3 Side panel description

Serial number	Description
1	USB interface
2	TF Card interface
3	Type-C interface

## 3 Main Menu

### 3.1 General setting

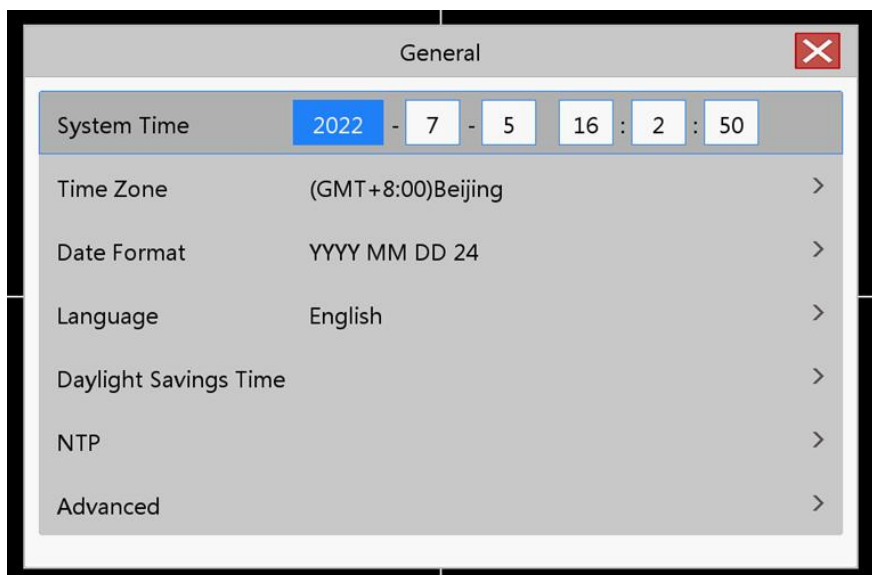


Figure 3-1 General setting

- 【System time】 Set the current system date and time of the station;
- 【Time Zone】 Select your time zone;
- 【Date Format】 Select the format of the date display, including: YYYY, MMDD, DDMM;
- 【Language selection】 Support multiple languages, with Chinese and English as the standard;
- 【Daylight Saving Time】 Set the daylight saving time system;
- 【NTP Service】 Set NTP service;
- 【Advanced】 Enable or disable boot wizard, screen saver, configure main extension mode.



## 3.2 Network setting

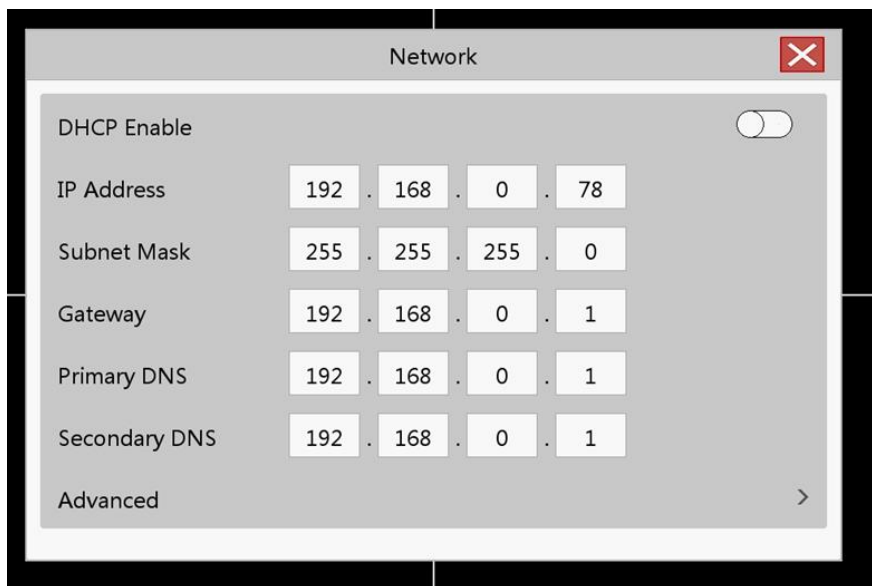


Figure 3-2 Network settings

【Obtain IP address automatically】 Automatically obtain IP function (open by default);

【IP Address】 Set the IP address of the device;

【Subnet mask】 Set the subnet mask of the device;

【Gateway】 Set the gateway of the device;

[DNS] Domain name resolution server, which is used to resolve the domain name into an IP address, which is provided by your network operator. After setting the address, it needs to be restarted to take effect;

【Advanced】 Email Service Settings

### 3.2.1 Mailbox settings

[SMTP server] The mail server address, which can be an IP address and a domain name (if it is a domain name, you need to confirm that the DNS is set correctly, and the domain name can be resolved correctly);

【Port】 mail server port number;

【Sender】 Set the email address of the sender of the email;

[Password] corresponds to the sender's email password;

【Recipient 1/2/3】 When an alarm is generated, it will be sent to the set recipient by email, and 3 recipients can be set;

【Email Test】 Test whether the mailbox settings are correct.

### 3.3 HDD Management

Configure and manage the SSD/TF card/USB in the indoor unit. The current hard disk information is displayed in the menu, including the name of the connected device, total capacity, device status, working status, etc. The access storage device can be formatted.

Note: When installing or replacing the hard disk, please power off the device first

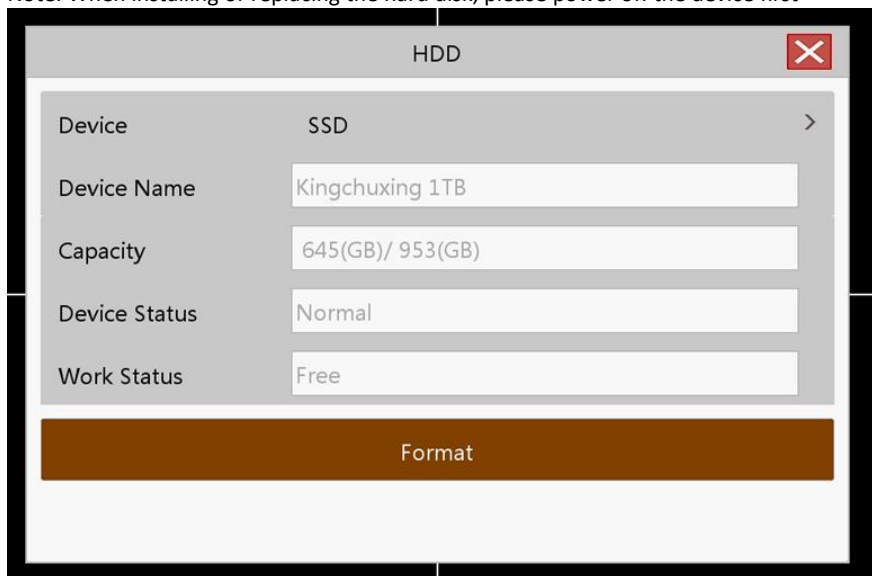


Figure 3-3 HDD

### 3.4 Add IP Camera

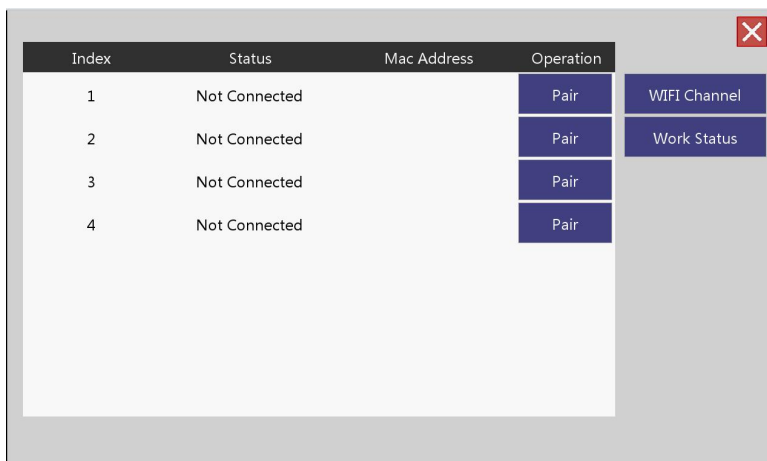


Figure 3-4 Add IP camera

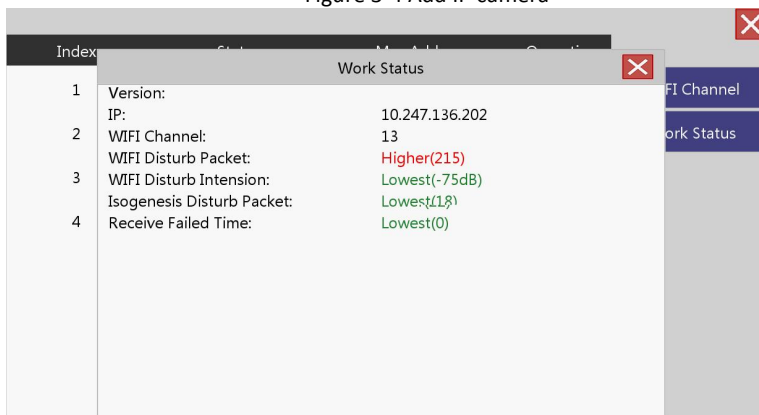


Figure 3-5 work status

- 【No.】 IPC serial number;  
 [Status] IPC connection status;  
 【MAC address】 IPCMAC address;  
 【Operation】 Pairing operation;  
 【Pairing】 Long press the IPC pairing button to perform pairing operation;  
 【Wireless Channel】 Wireless channel selection;  
 【Working status】 IPC working status.

### 3.5 P2P

Click Enable  Click Enable to enable the Tuya Smart APP remote access function.



Figure 3-6 P2P

### 3.6 Play back

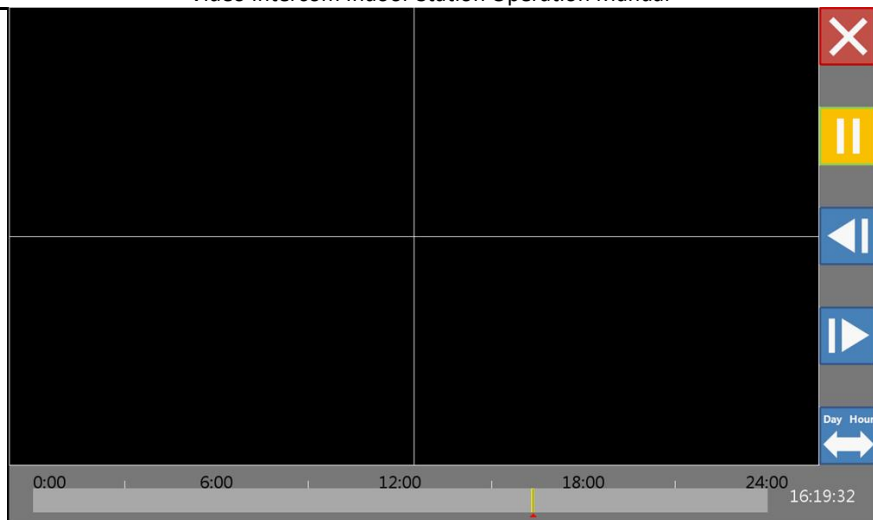


Figure 3-7 Play back menu

Table 3-1 Play back icon description

Icon	Description
	Export
	Calendar
	Play
	Last minute
	Next minute
	Timeline

### 3.7 Record setting

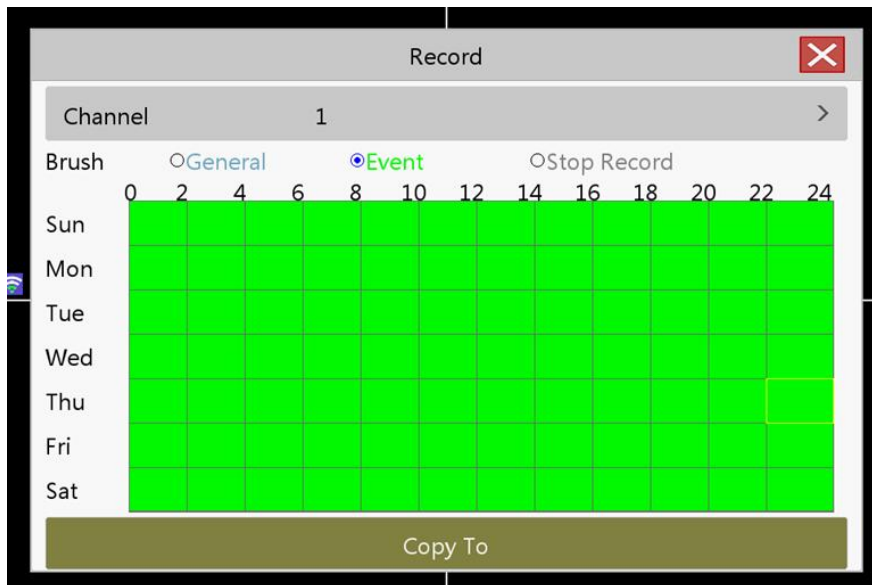


Figure 3-8 Record setting

Set the recording parameters of the channel. On initial startup, the system is set to record continuously for 24 hours. Corresponding settings can be made in [Recording Settings].

【Channel】 Select the corresponding channel number to set the channel;

【Brush】 Select the brush to draw the video plan;

【Normal】 In the set time period (blue area), normal recording is performed;

【Event】 During the set time period (green area), record the detection alarm;

【No recording】 During the set time period (white area), the corresponding channel stops recording;

【Copy to】 Copy the settings of the current channel to other channels.

### 3.8 Record backup

Backup

Channel

1

>

Start Time

2022

-

7

-

5

:

0

:

0

End Time

2022

-

7

-

5

:

16

:

30

:

56

Index	Channel	File Name	Length
<input type="radio"/> 1			
<input type="radio"/> 2			
<input type="radio"/> 3			
<input type="radio"/> 4			
<input type="radio"/> 5			
<input type="radio"/> 6			

Search

Backup

Figure 3-9 Record backup

Backup the video files in the device to an external storage device. Before backing up the files, you need to install a storage device that can accommodate the stored files.

[Query] After setting the corresponding channel and the corresponding event, click query to display the video files that meet the search conditions;

[Record backup] After selecting the file, click Video backup to start the backup.

### 3.9 System upgrade

Connect the external storage device with the upgrade file to the external interface of the indoor unit to upgrade.

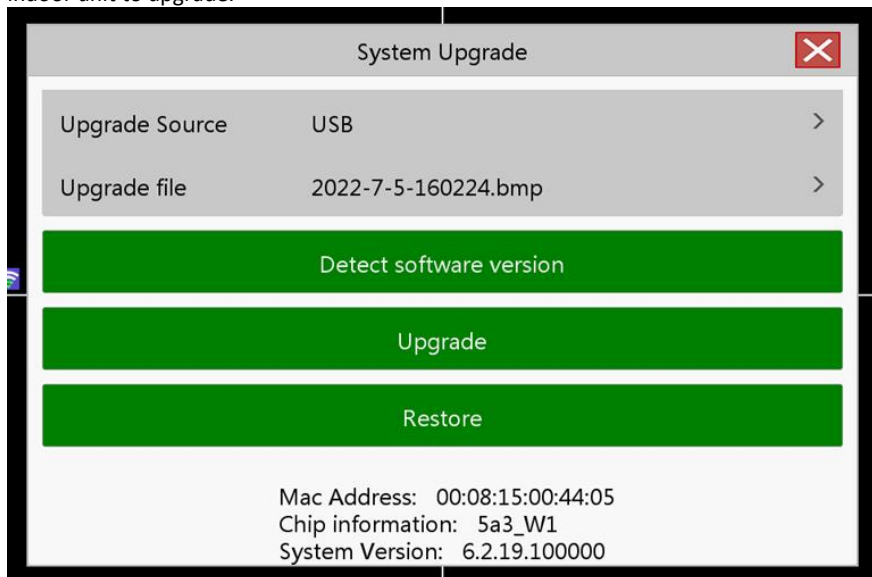


Figure 3-10 system upgrade

- 【Where to upgrade】 Select the external storage device with the upgrade file installed;
- 【Upgrade file】 Select the corresponding upgrade file;
- 【Detect software version】 Detect the current software version;
- 【Upgrade】 Start the upgrade operation;
- 【Restore Default】 Start the restore default operation.



## 4 Answer and unlock

### 4.1 Answer and unlock

Use the call button on the doorbell to start calling the indoor station, and the following dialog box will pop up:

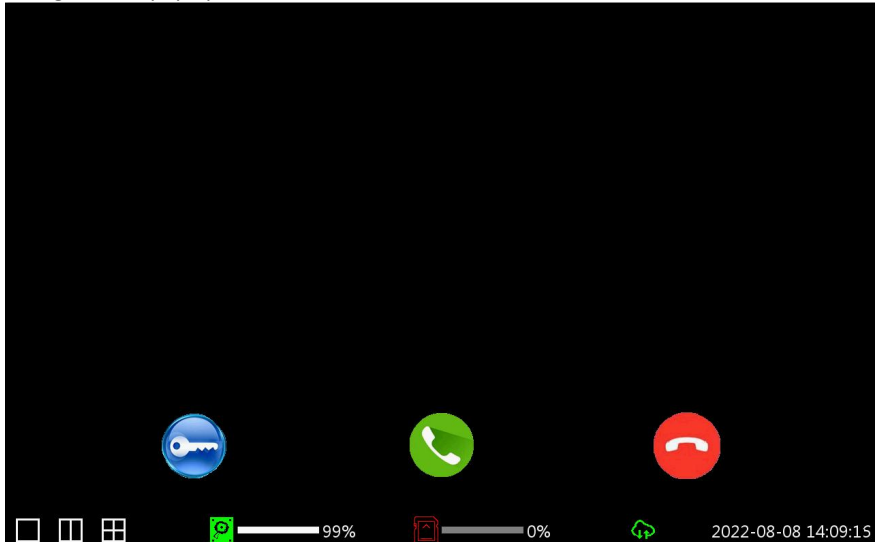


Figure 4-1 Answer and unlock

1. Click to answer the call. or click to reject the call
2. After answering the call, you will enter the in-call window, click to Reject the call.
3. Click to unlock.

## Appendix

---

### **Installation instructions:**

To avoid howling caused by the echo, please ensure that the distance between any two devices is greater than 10 meters when installing the device.

Note: The equipment here is not limited to indoor station, VTO, indoor extension, etc.

## FCC Statement

This equipment has been tested and found to comply with the limits for a Class B digital device, pursuant to part 15 of the FCC Rules. These limits are designed to provide reasonable protection against harmful interference in a residential installation. This equipment generates, uses and can radiate radio frequency energy and, if not installed and used in accordance with the instructions, may cause harmful interference to radio communications. However, there is no guarantee that interference will not occur in a particular installation. If this equipment does cause harmful interference to radio or television reception, which can be determined by turning the equipment off and on, the user is encouraged to try to correct the interference by one or more of the following measures:

- Reorient or relocate the receiving antenna.
- Increase the separation between the equipment and receiver.
- Connect the equipment into an outlet on a circuit different from that to which the receiver is connected.
- Consult the dealer or an experienced radio/TV technician for help.

Caution: Any changes or modifications to this device not explicitly approved by manufacturer could void your authority to operate this equipment.

This device complies with part 15 of the FCC Rules. Operation is subject to the following two conditions: (1) This device may not cause harmful interference, and (2) this device must accept any interference received, including interference that may cause undesired operation.

## RF Exposure Information

This equipment complies with FCC radiation exposure limits set forth for an uncontrolled environment. This equipment should be installed and operated with minimum distance 20cm between the radiator and your body.