

Shenzhen Fine Intelli Technology Co., LTD
201, Building D, No. 472-5, Jinbi Road, Biling Community, Pingshan District, Shenzhen, China

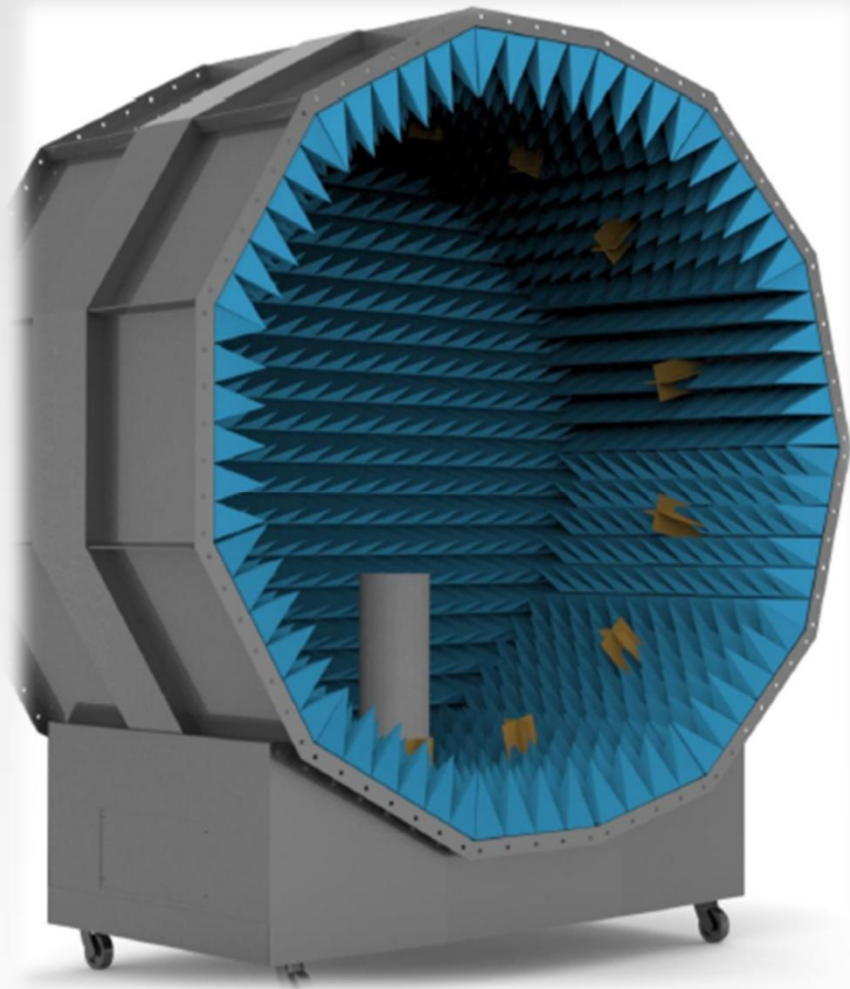
Far01 Antenna Evaluating Report

Prepared By: chengwei

Date of Report: 2024-12-02

Date	Rev	Description
2024-12-02	01	TEST Ant Efficiency and Gain





- Chamber : GTS Rayzone1800
- Network Analyzer : Agilent E5071C
- 2G/3G Comprehensive tester : Agilent 8960
- LTE Comprehensive tester : Anritsu MT8820
- TD Comprehensive tester : StarPoint SP6010
- WIFI Comprehensive tester : Anritsu MT8860
- GPS Signal Source : Agilent E4438C



Antenna frequency band

	Band		Band
GSM	-	WIFI / BT	2.4G
WCDMA	-		-
TD-SCDMA	-	FM	-
CDMA	-	Others	-
FDD LTE			
TDD LTE			

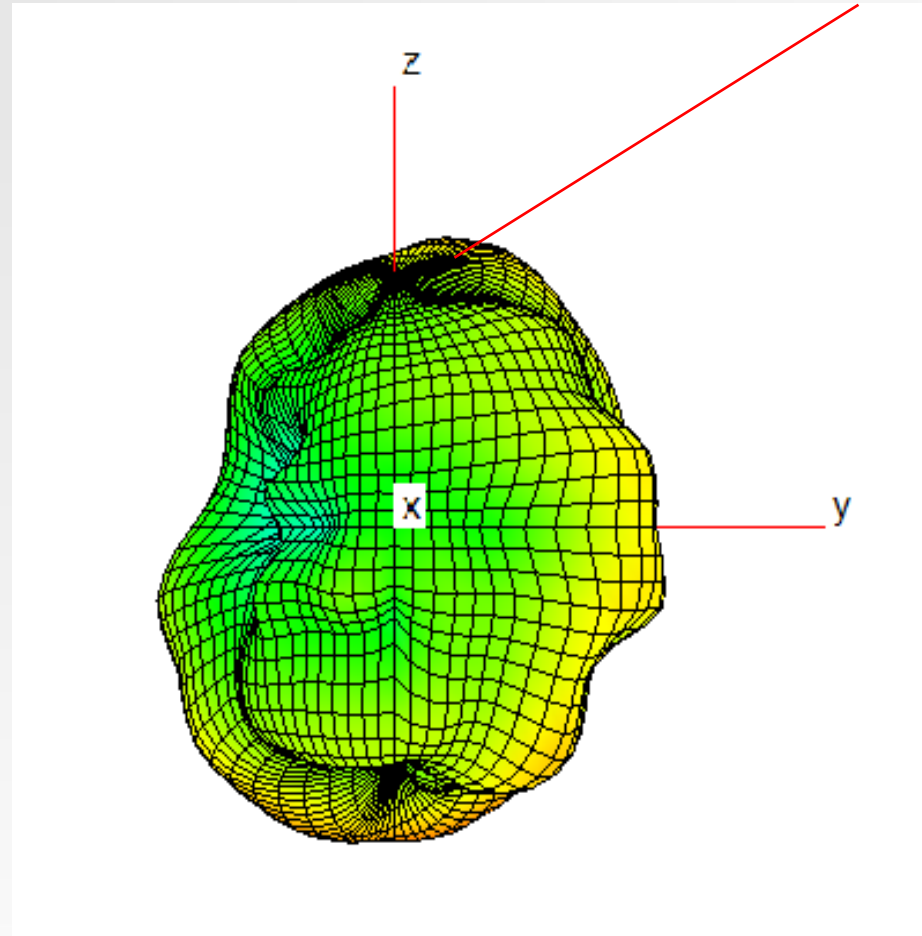
Frequency(MHz)	Eff.	Gain
2400	40.86	1.07
2410	43.54	1.22
2420	42.75	1.11
2430	44.54	1.32
2440	45.49	1.46
2450	46.18	1.51
2460	49.7	1.81
2470	50.52	1.71
2480	46.98	1.35
2490	47.75	1.58
2500	47.49	1.61



3D Radiation

2460MHz

1.81dBi



Dimensions

