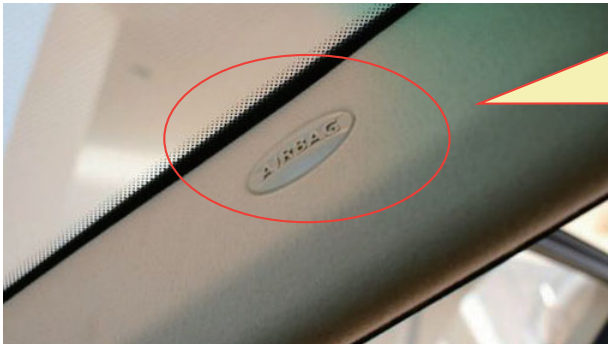




i. Install the cable to the panel



IMPORTANT NOTES



If your vehicle has side curtain airbags please be very careful when running any cables along your vehicle windows. Ensure you are not running Cable past any of the airbags as this can prevent the airbags from deploying



Please kindly note to align the two arrows to connect.

11.Important Functions

G-sensor

G-Sensor is a 3-axis impact gravitational sensor which is designed to detect physical and gravitational forces on the camera.

When detect significant/sudden shock& crash is detected The current loop cycle length of video file will be locked which will NOT be deleted by loop cycle function.

Tips for G-Sensor:

- a.** when G-sensor is on, please check and format the SD card every 7days. In case of the SD card full or important files missed.
- b.** The sensivity “LOW” is enough for daliy usage.
- c.** When setting “Middle/ High”, Many useless Locked files will make the SD card full easliy

Loop Recording

Loop Recording allows camera to continuously record loop by loop so it can delete the oldest video files automatically when the memory card becomes full so you don't have to manually delete them. This feature will split each video files to appropriate length based on your selection.

Time-lapse Video

Time Lapse video mode allows you to capture specific images per second at a much lower rate.

Time-lapse video is an auto function, If it's on: When car engine is started, the dash cam will record normal videos. When car engine is off, the camera will STOP the continuous video recording and it will go into the timelapse 1fps recording mode automatically.



IMPORTANT NOTES



a. Time-Lapse recording is triggered by the GMAIPOP Hardwire Kit only. If car charger is used, the time-lapse video will NOT be triggered

b. if Time-lapse video is necessary for you, please order the GMAIPO Hardwire kit by ASIN: **BOBRSNWKTV**

HDR

HDR improves the exposure by taking the combinations of over exposed and under exposed image into one robust wide range of lighting with higher depth image.

Take Photos

In Recording status, short press on

13.FAQ

FAQ of SD Card

Why the memory card can't be read and shows "SD card error"?

- Solution 1: Format the SD card manually;
 - Solution 2: Reset the dash cam by push the reset button;
- If the solutions are not workable, please contact the After-Sales team to get new SD card.

Why the SD card full?

There are many locked files which can not be overwritten by the loop recording. Please format the SD card to delete the locked files

FAQ of Suction Bracket

Why the Suction bracket keep dropping?

1. Please kindly clean the windshield, and remove the suction film. Then please make sure the suction is rotated to lock position tightly. ***(details in page 28 &29)***
2. The suction bracket is made by soft silicon, it will be getting age during usage. When the suction getting hard and drop, please contact us for free replacement.

FAQ of Dash Cam

How to switch the display window between front cam & Rear Cam?

Press  stop recording, Short press on  button.

Why the dash cam keep turn on and off?


- Please check the car charger connection, sometimes there are something in the cigaretter lighter which will disturb the power.
- Please turn off the Parking Monitor, when detecting shake, the dash cam will auto start
- Please format the SD card. When there are many locked videos in the SD card, the loop recording function can not overwrite it. Then the dash cam will keep turning on/off

If the problem is not solved, please contact us for refund/ replacement

01

01

How to Playback the video recorded by the rear camera

In Playback Mode, Long-press  button.
(details in page 21-23)

FAQ of Rear Camera

What's red cable for?

The red cable should be connected with the positive of the reversing lamp. Then dash cam can detect the car's reversing, when you reversing the car, the rear camera's view can be projected to dash cam screen automatically.

If this function is not necessary for you, please ignore it. It will not affect dash cam work.

FAQ of Time-Lapse Video

Why the Time-lapse video need to work with Hardware Kit

The time-lapse video needs a constant power supply from car battery, so it needs a hardwire kit to connect with car battery directly.

FCC Warning

This device complies with part 15 of the FCC Rules. Operation is subject to the following two conditions: (1) this device may not cause harmful interference, and (2) this device must accept any interference received, including interference that may cause undesired operation.

Any changes or modifications not expressly approved by the party responsible for compliance could void the user's authority to operate the equipment.

NOTE: This equipment has been tested and found to comply with the limits for a Class B digital device, pursuant to Part 15 of the FCC Rules. These limits are designed to provide reasonable protection against harmful interference in a residential installation. This equipment generates, uses and can radiate radio frequency energy and, if not installed and used in accordance with the instructions, may cause harmful interference to radio communications.

However, there is no guarantee that interference will not occur in a particular installation. If this equipment does cause harmful interference to radio or television reception, which can be determined by turning the equipment off and on, the user is encouraged to try to correct the interference by one or more of the following measures:

- Reorient or relocate the receiving antenna.
- Increase the separation between the equipment and receiver.
- Connect the equipment into an outlet on a circuit different from that to which the receiver is connected.
- Consult the dealer or an experienced radio/TV technician for help.

To maintain compliance with FCC's RF Exposure guidelines, This equipment should be installed and operated with minimum 20cm distance between the radiator and your body: Use only the supplied antenna.

14.Warranty & After-Sales

Thanks for purchasing GMAIPOP Dash Cam G100.

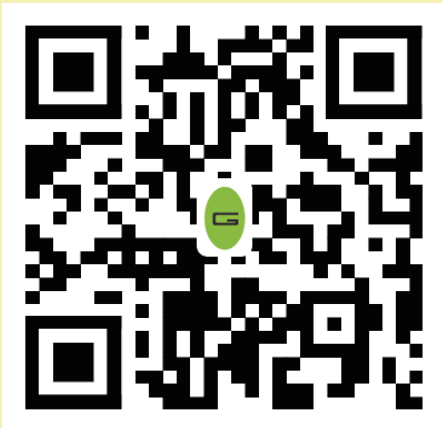
Deafult Warranty is 1year.

*If need to get extended warranty,
please register by scaning the code

*



Our after sales team are available



Scan to email US:
Dashcamhelp@outlook.com

*Scan the
QR code to
contact US*



Scan to text/ call US
in WhatsApp

15.THANK YOU FOR PURCHASING



Thank you for purchasing GMAIPOP G100.

We hope you find your new dash cam useful and fun to use. If you are having difficulties setting it up, please email us at dashcamhelp@outlook.com. 99% of all setup problems can easily be resolved and should be able to get you up and running in no time.

In the unlikely event that we can't help, we're always happy to provide full, hassle-free refund. We just want our customer to be happy and proud to use Dash Cam!

There is no perfect product, however we will always do our best to provide perfect customer service to you.

A Great care was taken while creating this user manual. It is possible that there are minor typos are there. If you find any mistakes or suggestions, please do let us know so we can correct it.

Please visit our website www.gmaipop.com for latest and updated user manual if available.

We also frequently update other great contents that is very useful to our customers.



Made in China