



深圳市凯普深通讯科技有限公司

Shenzhen cape deep communication technology co., LTD

天线测试报告

ANT Test report

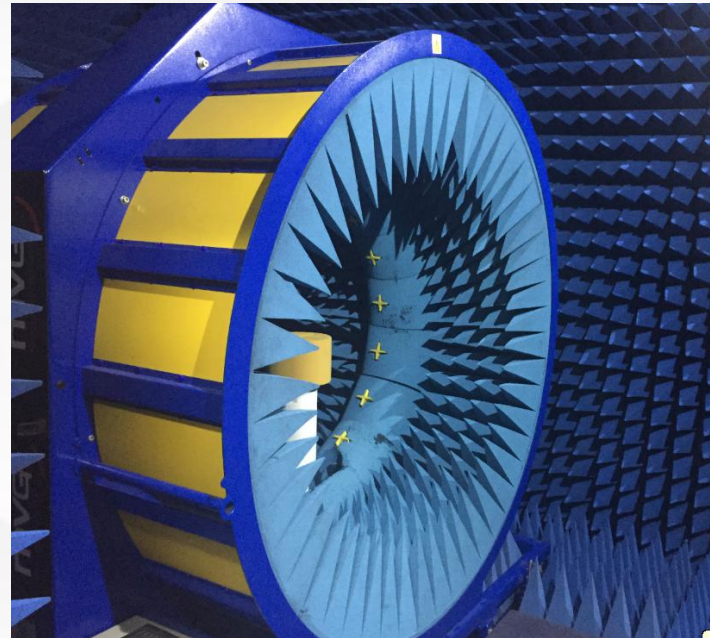
Model : R-K5

Versionn : V1.0



凯普深

Laboratory test environment and equipment



test item	test equipment
S11、S12、VSWR、LOSS	网络分析仪E5071B、E5062A
Efficiency、Gain 3D Radiation Pattern	Satimo SG16暗室、GP7*4*3暗室、E5071B
TRP、TIS	Satimo SG16暗室、GP7*4*3暗室、8960、 CMW500、MT8820C、E4438C、



凯普深

Introduction to project debugging

Machine type				
		Frequency band information	Antenna type	Match change
Antenna type and frequency band information	Antenna	2400-2480M		No
Antenna material	Coaxial line conductor			



凯普深

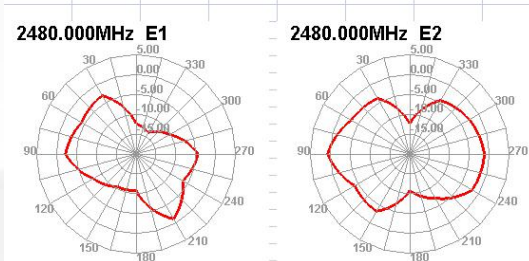
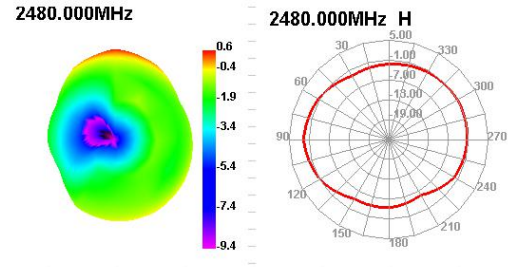
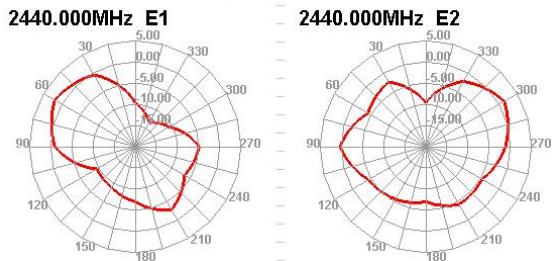
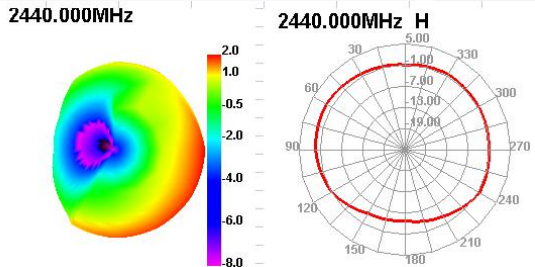
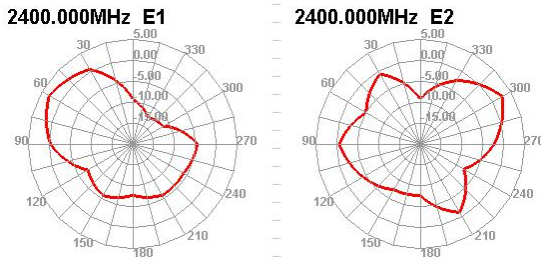
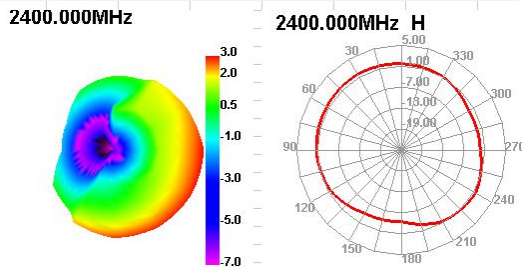
Antenna passive test data

Freq (MHz)	Effi (%)	Effi (dB)	Gain (dBi)
2400	37.12	-4.3	-1.39
2410	40.95	-3.88	-0.63
2420	40.59	-3.92	-0.55
2430	41.65	-3.8	-0.3
2440	43.92	-3.57	0.96
2450	45.65	-3.41	1.16
2460	42.18	-3.75	-0.07
2470	42.88	-3.68	0.25
2480	41.27	-3.84	0.63
2490	40.31	-3.95	0.14
2500	38.3	-4.17	-0.04



凯普深

Antenna direction test diagram





Complete environment treatment

Complete environment treatment