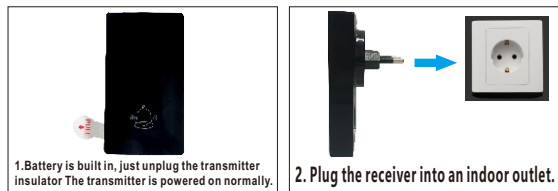
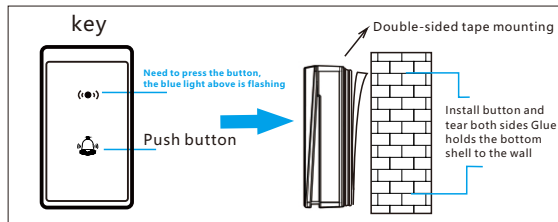


# 106X85CM

## Product installation diagram



## Methods: Double-sided adhesive method



04

## Matters needing Attention

- 1.Open the package, first test the specific installation position, and consider using double-sided tape to fix the launch.
- 2.Metal objects such as iron doors and iron frames will affect the effective transmission distance and avoid such locations as transmitters.
- 3.Receiver as far as possible away from induction cooker, TV, horn and other magnetic field or signal interference sources.
- 4.Non-professionals should not open the repair without authorization, so as not to destroy the precision electronic components.
- 5.Avoid prolonged sun exposure and installation in metal positions.
- 6.The correct use of this product can effectively extend the service life.

## Product Warranty

A.This product can be repaired within two years from the date of sale.

B.Damage caused by improper use, accidental damage or self-opening for maintenance Not covered by warranty.

## Product warranty card

User name	
Purchase date	
User address	
User telephone	

## Product certificate

It is qualified and allowed to leave the factory.	
Model name	
examination clerk	
Inspection date	

05

FCC COMPLIANCE STATEMENT:  
This device complies with part 15 of the FCC Rules.  
Operation is subject to the following two conditions:

- (1) This device may not cause harmful interference, and
- (2) this device must accept any interference received, including interference that may cause undesired operation.

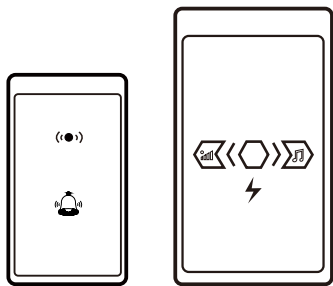
Note: This equipment has been tested and found to comply with the limits for a Class B digital device, pursuant to Part 15 of the FCC Rules. These limits are designed to provide reasonable protection against harmful interference in a residential installation. This equipment generates, uses and can radiate radio frequency energy and, if not installed and used in accordance with the instructions, may cause harmful interference to radio communications.

However, there is no guarantee that interference will not occur in a particular installation. If this equipment does cause harmful interference to radio or television reception, which can be determined by turning the equipment off and on, the user is encouraged to try to correct the interference by one or more of the following measures: Reorient or relocate the receiving antenna. Increase the separation between the equipment and receiver. Connect the equipment into an outlet on a circuit different from that to which the receiver is connected.Consult the dealer or an experienced radio/TV technician for help.

Warning: Changes or modifications to this unit not expressly approved by the part responsible for compliance could void the user' s authority to operate the equipment.

FCC Radiation Exposure Statement  
The device has been evaluated to meet general RF exposure requirement. The device can be used in portable exposure condition without restriction.

## Wireless Doorbell Operation Manual



## Thank you for choosing our products

In order to use this product better, please read the product manual carefully before installation, and install and use it correctly according to the manual.

## Product Overview

Thank you for choosing our wireless doorbell. It is easy to install, no wiring required,Simply plug the receiver into a power outlet and install the doorbell transmitter where needed,Can easily implement the doorbell function. The frequency of the company's wireless doorbell is in line with the national regulations, and will not produce harmful electromagnetic interference.

## Product Characteristics

- ★European and American modern simple, elegant and exquisite, comfortable and practical style.
- ★Transmitter use advantage "alkaline battery" to avoid the use of short battery life;
- ★200 m remote control/receiving distance;
- ★38 chords ringtone choice, 4 level volume adjustment (with mute function);

## Mode of Use

—When the company's supporting products are shipped, the production workshop has been matched directly Power on, no need to re-pair.

Augmented emitter method:

After the product transmitter and receiver are powered on, press the receiver volume button "🔊" Do not let go, and press launch twice at the same time, will quickly produce a bell ring, then the pairing is successful.

01

## Product Specification

technical parameter	Receiver	key
Voltage range	90V~260V	12V
Ambient Temperature	-20~60°C	-20~60°C
transmission distance	Open 200m, obstacle 10-80m	
Operating Frequency	433. 92MHz	
Volume	0-100dB	
Power dissipation	0.25W	Standby 0 Ma operation<20mA
Waterproof grade		IP44
Product size(L*W*H)	104*58*25mm	82*46*22mm
Product weight	70g	40g

## Product Function

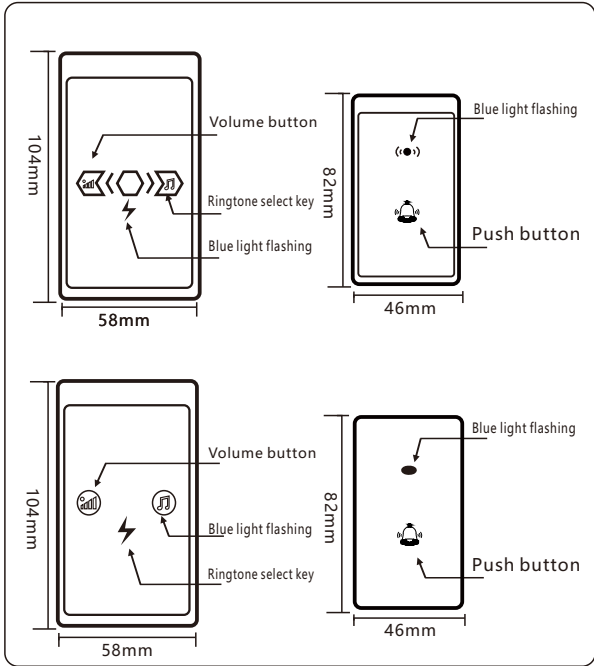
- ★ Home doorbell caller;
- ★ As a contact, paging, patient care and other special purposes;
- ★ Ordinary business office access control call function;

## Applicable Occasion

- ★ Home residence, office building, hotel service, hospital, factory site,Shops and environments suitable for effective distance.

02

## Product size Drawing



03