

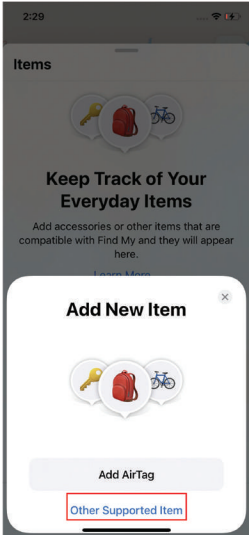
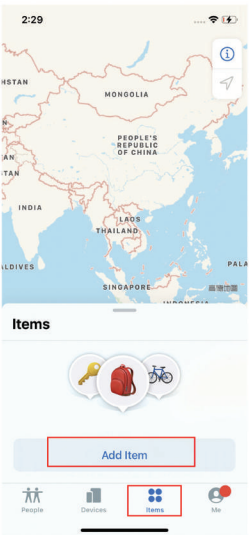
Find My User Manuel

Add Your iTag:

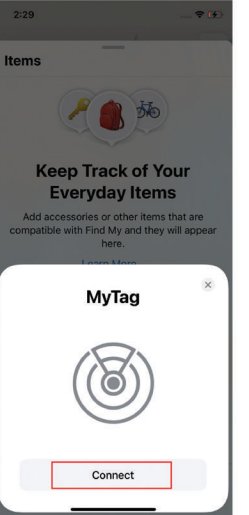
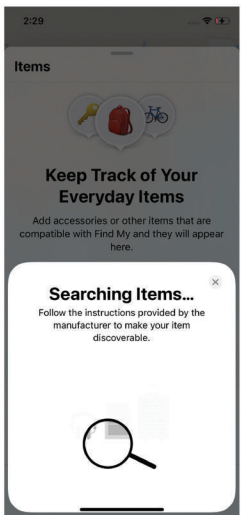
Stat the APP: Open Find My™ on your supported iPhone or iPad and allow notifications from the APP .

Connect iTag:

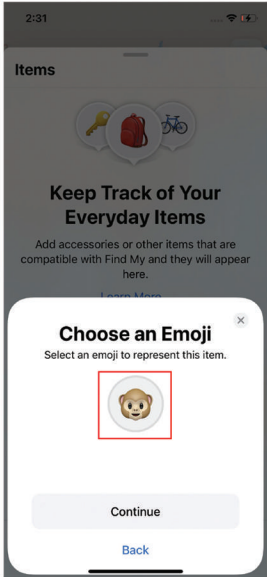
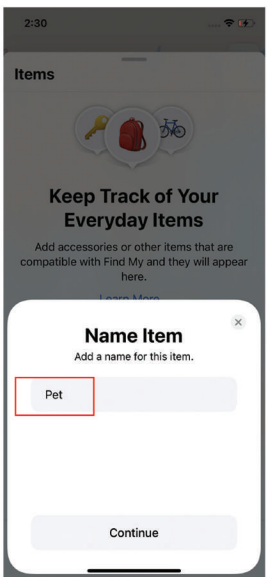
1. Press the button to power on iTag ,
2. Select “ Items ” tab , then tap “ Add Item ” , and next tap “ Other supported items ” ,



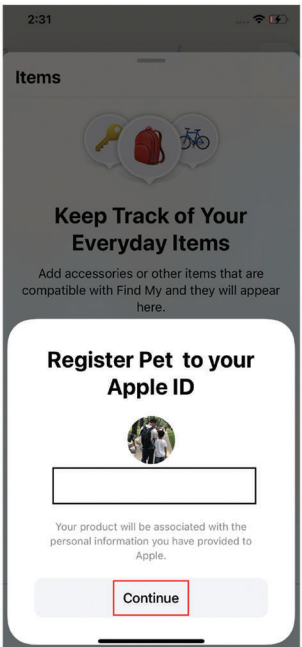
3. Once iTag is located , tap “ Connect ” ,



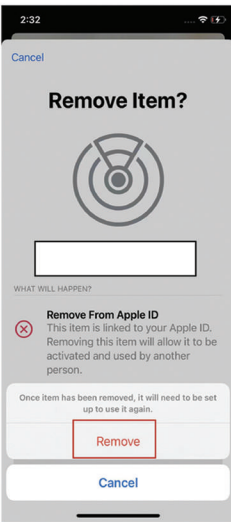
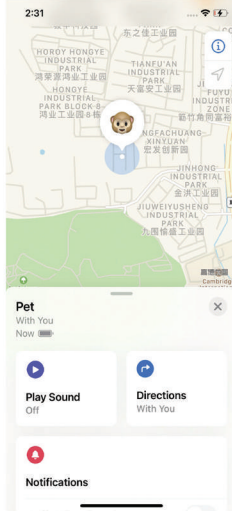
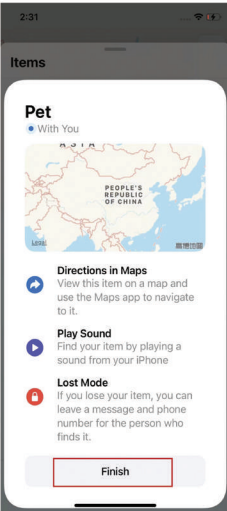
4. Choose a recognizable name and emoji for your iTag and tap “ Continue ” ,



5. Find My™ will ask for confirmation to add iTag to your Apple ID , and tap “ Continue ” ,



6. Tap “ Finish ” and your iTag will be set up and ready to be connected to whatever iTag you wish to locate , e.g. your keys .



1. Open Find My™ app and select the “ Items ” tab ,
2. Tap on your iTag from the list ,
3. Under “ Lost Mode ” tap “ Enable ” ,
4. A screen detailing Lost Mode will pop up , tap “ Continue ” ,
5. Enter your phone number or email address and tap “ Next ” ,
6. You may enter a message that will be shared with the person that finds your item ,
7. Tap “ Activate ” to enable “ Lost Mode ” ,
8. Note: When “ Lost Mode ” is enabled , “ Notify When Found ” is automatically enabled .
9. Note: When “ Lost Mode ” is enabled , your iTag is locked and cannot be pared to a new iPhone or iPad .

Extras

—Replace The Battery

1. Slide the opening slider on the back of your iTag to carefully open the shells ,
2. Replace the battery with a new CR2032 battery replacing it positive side up (text facing up) .

—Unwanted Tracking

If any Find My network accessory separated from its owner is seen moving with you over time , you'll be notified in on of two ways :

1. If you have an iPhone , iPad or iPod touch , Find My will send a notification to your Apple device . This feature is available on iOS or iPadOs 14.5 or later .
2. If you don't have an iOS device or a smartphone , Find My network accessory that isn't with it's owner for a period of time will emit a sound when it's moved .

These features were created specifically to discourage people from trying to track you without your knowledge .

The Fine Print

This device complies with part 15 of the FCC Rules.Operation is subject to the following two conditions:(1)This device may not cause harmful interference,and (2) this device must accept any interference received,including interference that may cause undesired operation.NOTE:The manufacturer is not responsible for any radio or TV interference caused by unauthorized modifications or changes to this equipment.Such modifications or changes not expressly approved by the party responsible for compliance could void the user s authority to operate this device.The device has been evaluated to meet general RF exposure requirement,The device can be used in portable exposure condition without restriction.Federal Communication Commission(FCC)Radiation Exposure Statement Power is so low that no RF exposure calculation is needed.

This equipment has been tested and found to comply with the limits for a Class B digital device,pursuant to part 15 of the FCC Rules.These limits are designed to provide reasonable protection against harmful interference in a residential installation.This equipment generates us es and can radiate radio frequency energy and,if not installed and used in-acordance with the instructions,may cause harmful interference to radio communications.However,there is no guarantee that interference will not occur in a particular installation.If this equipment does cause harmful interference to radio or television reception,which can be determined by turning the equipment of f and on,the user is encouraged to try to correct the interference by one or more of the following measures:Reorient or relocate the receiving antenna.Increase the separation between the equipment and receiver.Connect the equipment into a n outlet on a circuit different from that to which the receiver is connected.

Use of the Works with Apple badge means that a product has been designed to work specifically with the technology identified in the badge and has been certified by the product manufacturer to meet Apple F and My network product specifications and requirements.Apple is not responsible for the operation of this device or use of this product or its compliance with safety and regulatory standards.Use of the Works with Apple badge means that a product has been designed to work specifically with the technology identified in the badge and has been certified by the product manufacturer to meet Apple Find My network product specifications and requirements.Apple is not responsible for the operation of this device or use of this product or its compliance with safety and regulatory standards.Apple Find My,Apple Watch,Find My,iPhone,iPad,iPad OS,iPod touch,Mac,mac OS and Watch OS are trademarks of Apple Inc.IOS is a trademark of Cisco and is used under license .

Factory Reset Your iTag:

1. After successfully removing the iTag from Find My™ app , press the iTag's function button 4 times rapidly and then hold it a fifth time until you hear a ringing chime .
2. The iTag is now reset and ready to be paired to a new iPhone or iPad .

Locate Your iTag:

—Find iTag when It's Nearby:

1. Open Find My™ app and select the “ Items ” tab ,
2. Tap on your iTag from the list ,
3. Tap “ Play Sound ” to make your iTag Beep ,
4. Tap “ Stop Sound ” to stop the beeps once you find it .

—Find iTag's last Known Location:

1. Open Find My™ app and select the “ Items ” tab ,
2. Tap on your iTag from the list ,
3. Your iTag's last known location will appear on the map ,
4. To navigate to that last known location , tap “ Direction ” to open the Apple Maps app .

Find iTag Out of Range

—Enabling “ Notify When Left Behind ”:

1. Open Find My™ app and select the “ Items ” tab ,
2. Tap on your iTag from the list ,
3. Under “ Notifications ” enable the “ Notify When Left Behind ” toggle ,
4. You will receive a notification when you leave your iTag behind and it's no longer in range of your device .

—Enabling “ Notify When Found ”:

1. Under “ Notifications ” enable the “ Notify When Found ” toggle ,
2. When your iTag is seen by another Find My™ enabled device , you will receive a notification of its updated location .
3. Note: “ Notify When Found ” can only be activated when your iTag is out of range .

When Your iTag Is Lost

—Enabling “ Lost Mode ”

