



## STPMID TCU

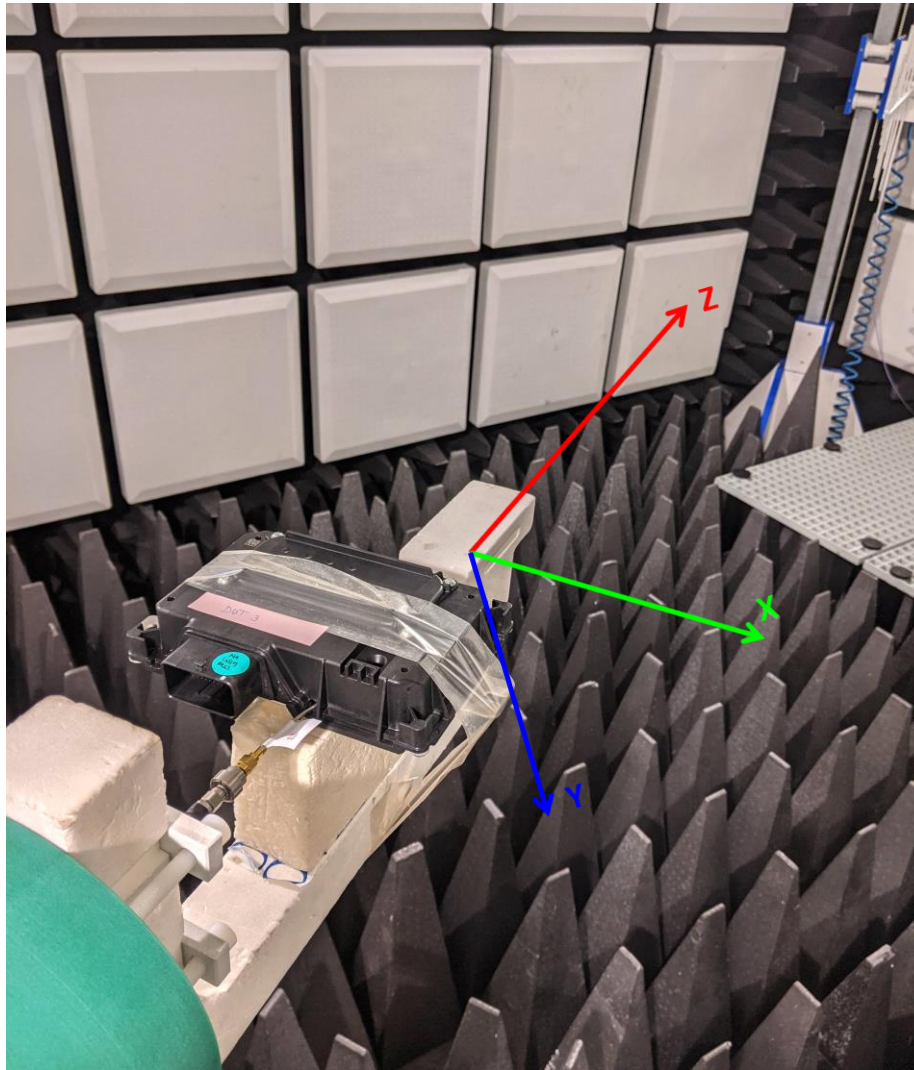
### Antenna data for certification

Jan 2024

[www.continental-corporation.com](http://www.continental-corporation.com)

Interior Division

# Anechoic chamber setup



# Primary LTE Antenna – Peak Gain values in uplink NA bands

Band	Frequency	Max Gain
LTE Band 2	1850.0 MHz	+4.1 dBi
	1880.0 MHz	+4.2 dBi
	1910.0 MHz	+4.3 dBi
LTE Band 4	1710.0 MHz	+3.8 dBi
	1732.5 MHz	+4.1 dBi
	1755.0 MHz	+4.2 dBi
LTE Band 5	824.0 MHz	+0.2 dBi
	836.5 MHz	+0.1 dBi
	849.0 MHz	0 dBi
LTE Band 7	2500.0 MHz	+3.0 dBi
	2535.0 MHz	+3.1 dBi
	2570.0 MHz	+3.3 dBi
LTE Band 12	699.0 MHz	-0.7 dBi
	707.5 MHz	-0.5 dBi
	716.0 MHz	-0.4 dBi
LTE Band 13	777.0 MHz	-0.5 dBi
	782.0 MHz	-0.4 dBi
	787.0 MHz	-0.1 dBi
LTE Band 17	704.0 MHz	-0.7 dBi
	710.0 MHz	-0.4 dBi
	716.0 MHz	-0.2 dBi

# Bluetooth antenna – Peak Gain values

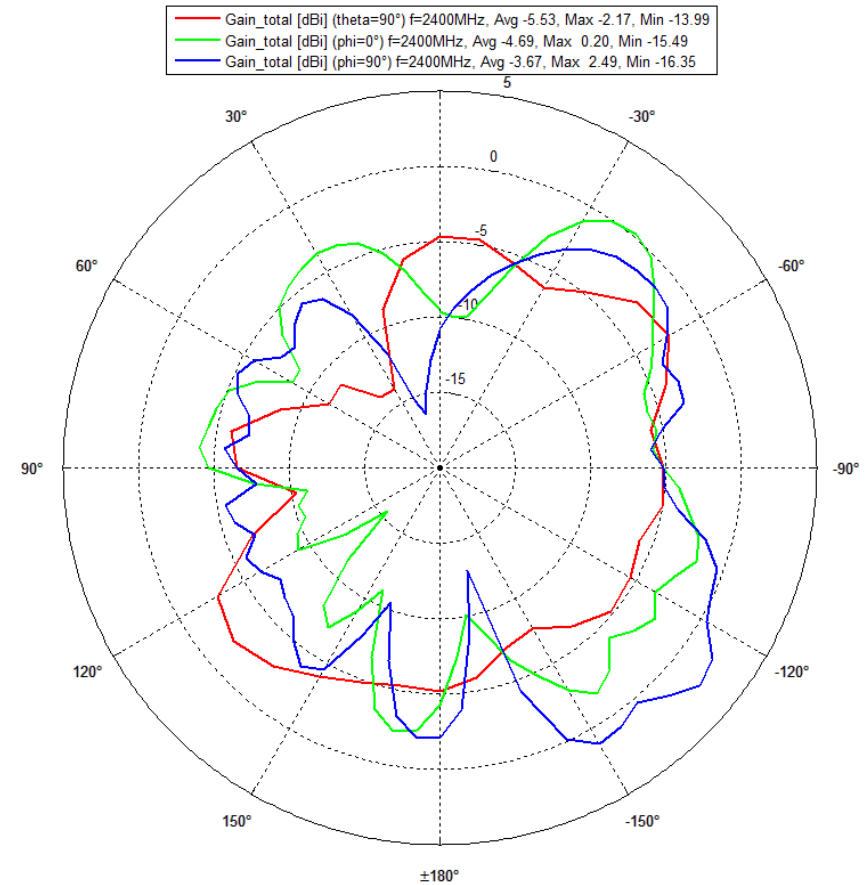
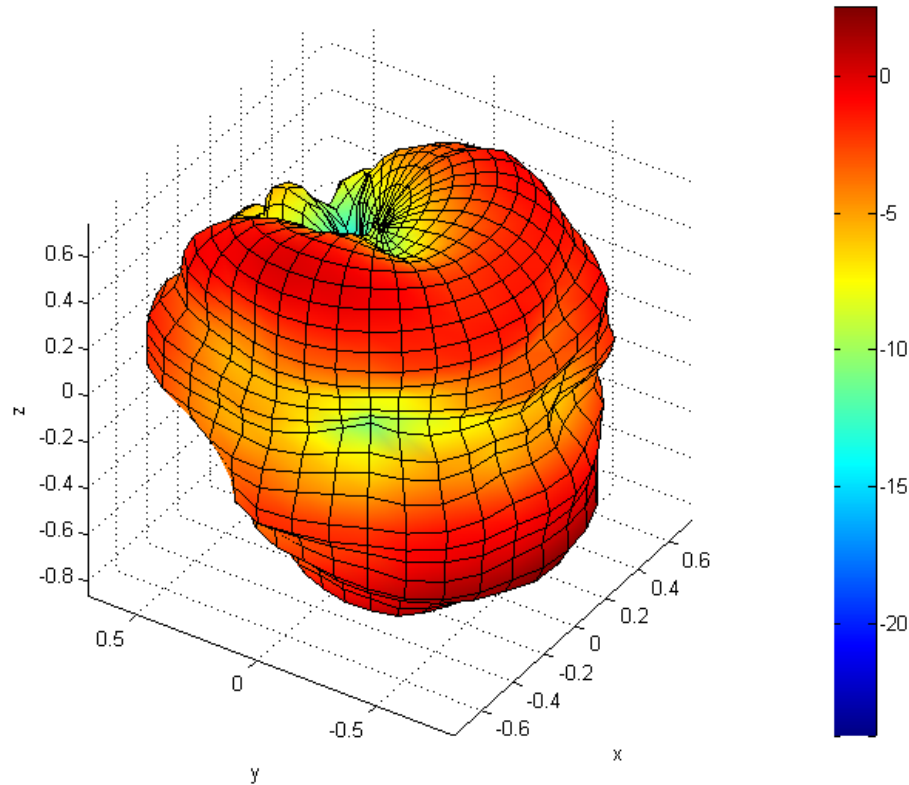
Band	Frequency	Peak Gain
2.4 – 2.48 GHz	2400 MHz	+2.5 dBi
	2410 MHz	+2.7 dBi
	2420 MHz	+2.8 dBi
	2430 MHz	+2.7 dBi
	2440 MHz	+2.7 dBi
	2450 MHz	+2.7 dBi
	2460 MHz	+2.5 dBi
	2470 MHz	+2.2 dBi
	2480 MHz	+2.3 dBi

# GNSS antenna – Peak Gain values

Band	Frequency	Peak Gain
GPS/ GALILEO	1560 MHz	+1.4 dBi
	1570 MHz	+1.9 dBi
	1575 MHz	+2.0 dBi
	1580 MHz	+1.8 dBi
	1585 MHz	+1.6 dBi
	1590 MHz	+1.2 dBi
GLONASS	1595 MHz	+0.8 dBi
	1600 MHz	+0.5 dBi
	1605 MHz	+0.5 dBi
	1610 MHz	+0.3 dBi

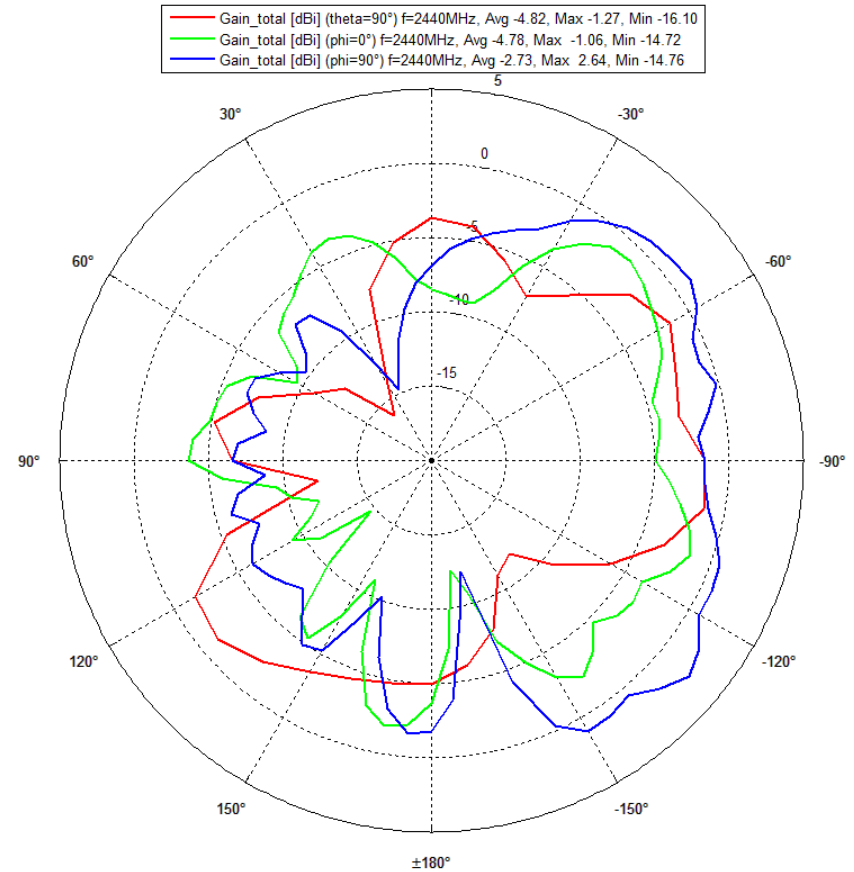
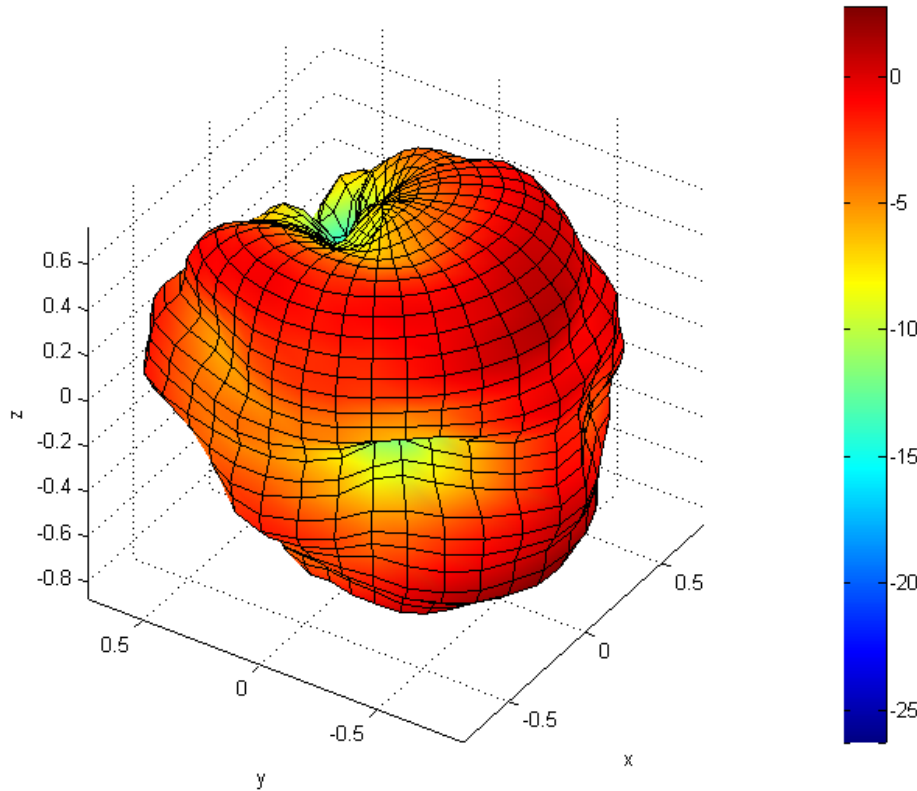
# WiFi/Bluetooth 3D/2D Total Gain @2.40GHz

C1\_S#5\_H1\_WiFi\_2021\_05\_21\_13\_41\_48\_a3Ds21data  
f=2400MHz Gain\_total [dBi] Max: 2.51dBi Min: -24.11dBi Efficiency: 39.07% (-4.1dB) corr: 0.00dB



# WiFi/Bluetooth 3D/2D Total Gain @2.44GHz

C1\_S#5\_H1\_WiFi\_2021\_05\_21\_13\_41\_48\_a3Ds21data  
f=2440MHz Gain\_total [dBi] Max: 2.70dBi Min: -26.29dBi Efficiency: 42.07% (-3.8dB) corr: 0.00dB





# WiFi/Bluetooth 3D/2D Total Gain @2.48GHz

C1\_S#5\_H1\_WiFi\_2021\_05\_21\_13\_41\_48\_a3Ds21data  
f=2480MHz Gain\_total [dBi] Max: 2.34dBi Min: -20.17dBi Efficiency: 37.13% (-4.3dB) corr: 0.00dB

