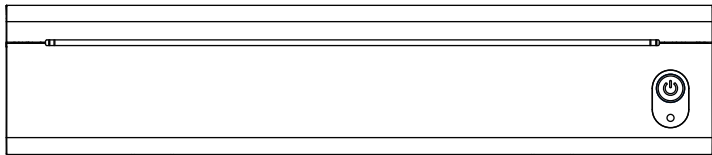


Instruction Manual

A4 Portable Printer A10 Series



Version:1.0

Product Sketch

① Open Side

- Push to open the cover

④ Paper Input Tray

② Type-C Interface

- Charged with power bank or mobile phone charger

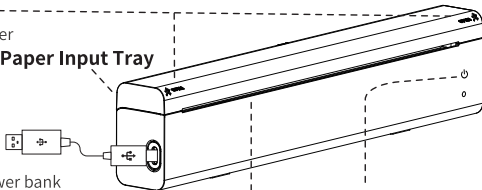
⑤ Paper Exit Slot

③ Power Button

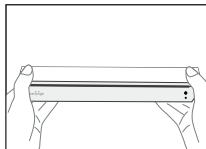
- Press and hold for 2 seconds to power on/off
- Double click power button to print QR code of the printer
- Click to cancel printing (when printing)
- Click to eject paper (after loading paper)

Power Indicator Status

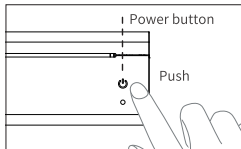
- White light is always on: Normal startup
- Blue light is always on: The app is connected to the printer
- Green light is always on: Full charge
- Red light is always on: Overheating/Charging
- Red light flashing slowly: Low battery. Please charge in time



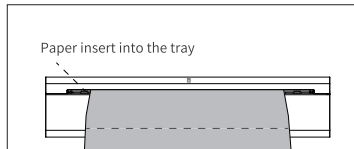
Paper Installation Instructions



- ❶ Ensure the lid is closed tightly

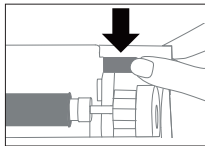


- ❷ Press and hold the power button for 2 seconds to turn on

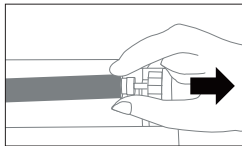


- ❸ Align with the paper feed slot and insert until it is drawn in and cannot be pulled out
(If paper jam occurs, please follow the roller disassembly instructions to remove the paper.)

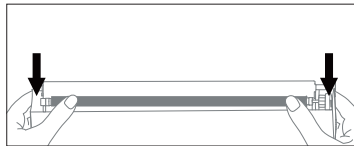
Roller Disassembly Instructions



- ❶ Open the lid and press the metal button on the top right of the roller



- ❷ The right side of the roller will pop up, then pull the roller out to the right



- ❸ Place both ends of the roller on the metal brackets, and press down to install successfully

App Printing

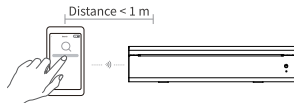
Step 1: App Download

Step 2: App connects to printer

- 1 Press and hold the power button for 2 seconds to turn on the printer.
- 2 Open the App, enter the interface of connecting the device, and click to connect to the discovered printer. Or press the power button twice to print the QR code, then connect the printer by scanning the code.

(Tips: Don't connect printer in the mobile phone bluetooth settings.)

- 3 After the printer is connected, open the function provided by the App to operate printing.



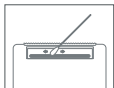
PC Printing

- ❶ Press and hold the power button for 2 seconds to turn on the printer. Connect the printer and computer with the original Type-C data cable.
- ❷ Please visit the official website, <https://www.ileadtek.com/en/download.html>, to download and install the printer driver for editing and printing.
- ❸ After the driver is installed, select this printer when print documents on the computer.

Charging Instructions

- 5V=2A input, recommend to use mobile phone charger for charging.
- Recommend to charge the battery fully before using.
- If printer has not been used for a long time, please charge it every 3 months, to avoid long-term natural wear and tear of lithium batteries can not be charged.

Clean the Printer Head



- ❶ Please turn off the printer, open the printer cover, remove the roller, and take out the printing paper.
- ❷ Dip a cotton cloth or cotton swab with medical alcohol, and wipe gently along the center to the periphery of the printer head.
- ❸ After cleaning the printer head, do not use the printer immediately. Please wait for 1 to 2 minutes, use the printer after the alcohol has completely evaporated.

FCC Warning

This device complies with Part 15 of the FCC Rules. Operation is subject to the following two conditions:

(1) This device may not cause harmful interference, and (2) this device must accept any interference received, including interference that may cause undesired operation.

NOTE 1: This equipment has been tested and found to comply with the limits for a Class B digital device, pursuant to part 15 of the FCC Rules. These limits are designed to provide reasonable protection against harmful interference in a residential installation. This equipment generates, uses and can radiate radio frequency energy and, if not installed and used in accordance with the instructions, may cause harmful interference to radio communications. However, there is no guarantee that interference will not occur in a particular installation. If this equipment does cause harmful interference to radio or television reception, which can be determined by turning the equipment off and on, the user is encouraged to try to correct the interference by one or more of the following measures:

- Reorient or relocate the receiving antenna.
- Increase the separation between the equipment and receiver.
- Connect the equipment into an outlet on a circuit different from that to which the receiver is connected.
- Consult the dealer or an experienced radio/TV technician for help.

NOTE 2: Any changes or modifications to this unit not expressly approved by the party responsible for compliance could void the user's authority to operate the equipment.

The device has been evaluated to meet general RF exposure requirement. The device can be used in portable exposure condition without restriction.



Find out more product knowledge
and after-sales service

Xiamen AiYin Technology Co., Ltd.

Index: www.aiyin.com

Driver: help.aiyin.com

E-mail: support@aiyin.com