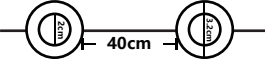
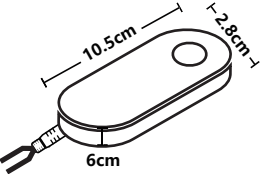
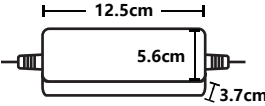

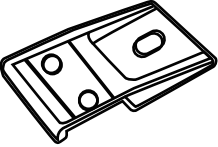



# Product Name : Permanent Outdoor Eaves Light



## I: Product Parameter:

Product Name	Permanent Outdoor Eaves Light
Light Color	RGBIC-Magic Color
Product Body Color	White / Black
Control Method	APP & Voice Control
Voice Control	Alexa, Google Home, Tmall Genie
Lens Angle	120 °
Power	1.8W/LED, 12.6W/Strip (12 leds/strip), 129.6W/ Set (72 leds/set)
Connectivity Protocol	2.4GHz WiFi + Bluetooth
Input Voltage	100 - 240V
Output Voltage	DC 36V
Specification	One light strip is 5 meters, with 12 leds/ strip, total 6 strips, every led bead can be controlled independently
Operating Temperature	-4°F~140°F (-20℃~ 60℃)

Accessories	Name	Specification	Quantity	Remark
	String lights	36V-5M-12LEDs/Strip Total length: 30M	6	Wire length between two LEDs: 400mm Length of input & output wire: 200mm
	Controller	105*60*28mm	1	Length of power cable: 295cm
	Power adapter	Working voltage: 36V	1	Plug wire length: 70cm Cable length connected to the controller: 195cm
	Mounting clamp	Length: 33mm width: 21mm	10Pcs	
	Clip	20.32*27.94inch	24Pcs	
	Gum	Diameter: 30mm	12Pcs	

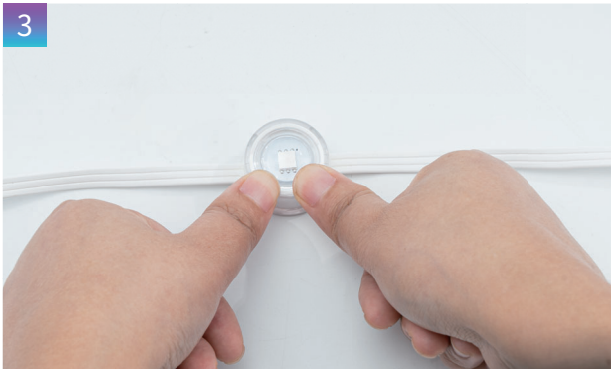
# Easy to install



Clean the surface with a cloth or tissue before installing the string lights.



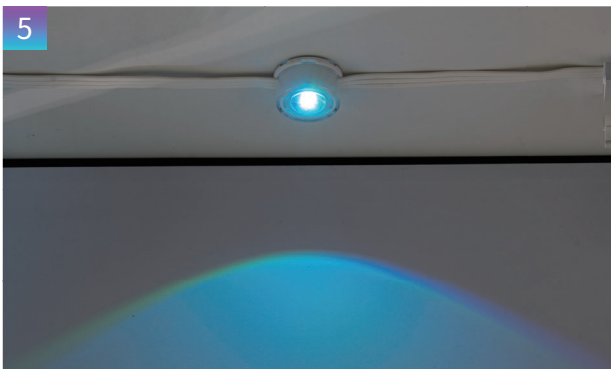
Tear off the VHB gum on the back of the light.



Press the light firmly against the surface for more than 5 seconds.



Connect 2 string lights via the waterproof connectors and screw in the cap.



Please install the string lights 1.91-3.94 inch away from the wall surface.

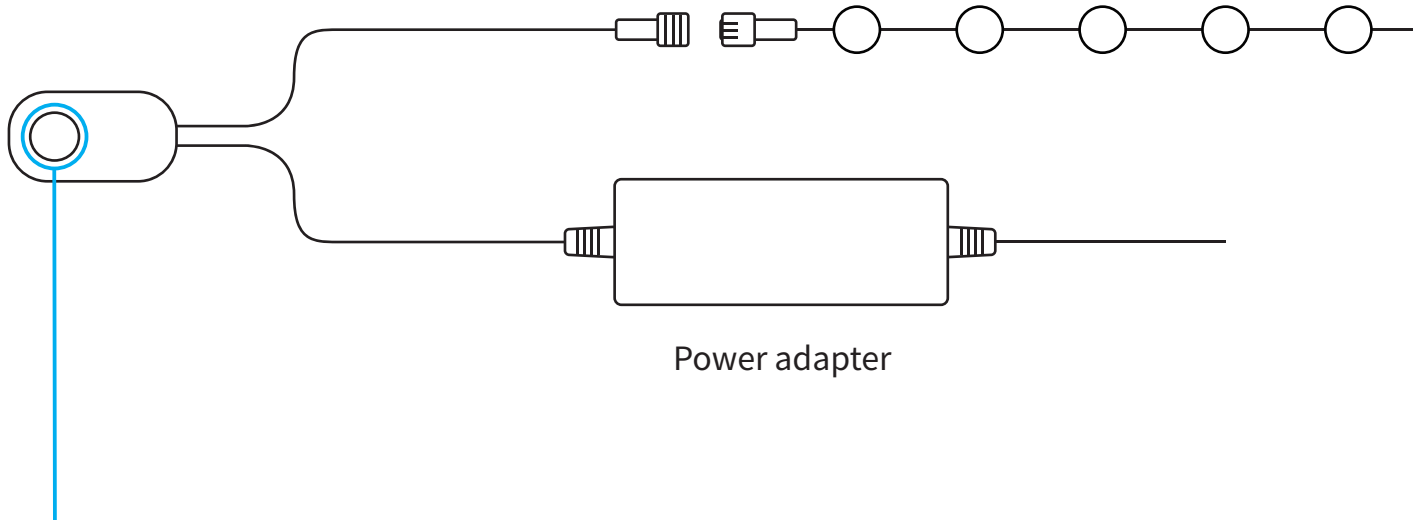


Attach 4 screw clips to each string light to keep them secure.

## II: Wire Connection

LED Strips or other constant voltage lights

UFO LED Controller



Short press: Turn on or transfer the Built-in modes

Long press: Hold on 3 seconds-turn off Hold on 8 seconds-restore factory Settings



The connection between the controller and the power supply



Controller and device connection

### III. Download Surplife APP

Download “Surplife” APP from Apple Store and Google Play Store, or scan the QR code.

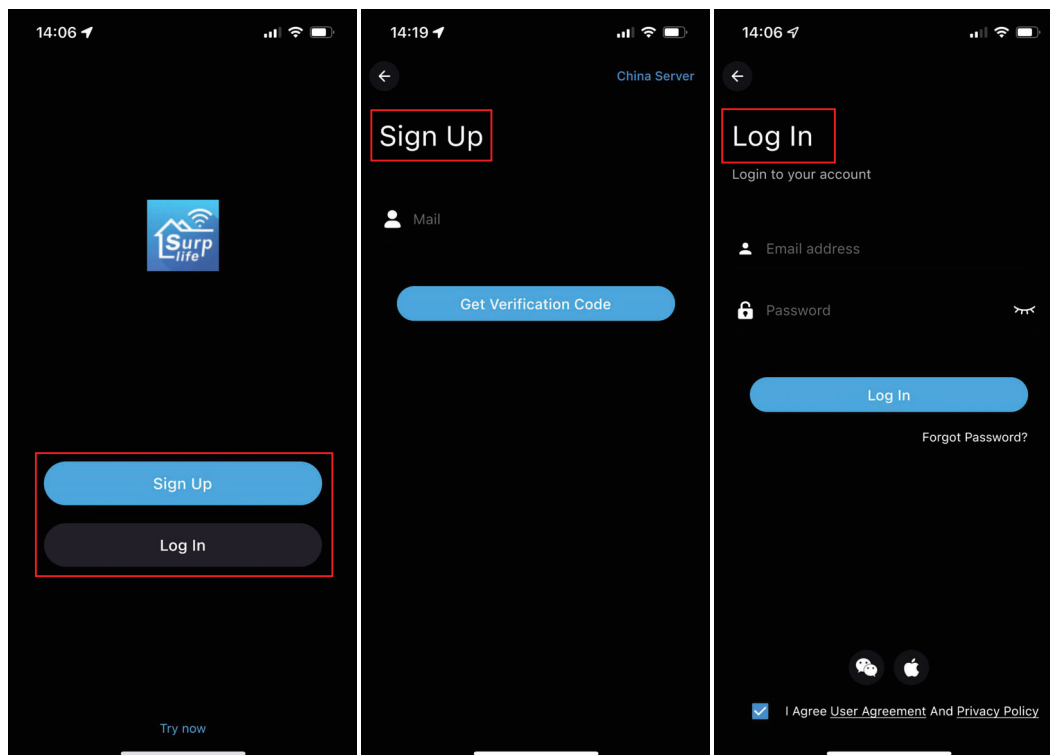


Surplife APP



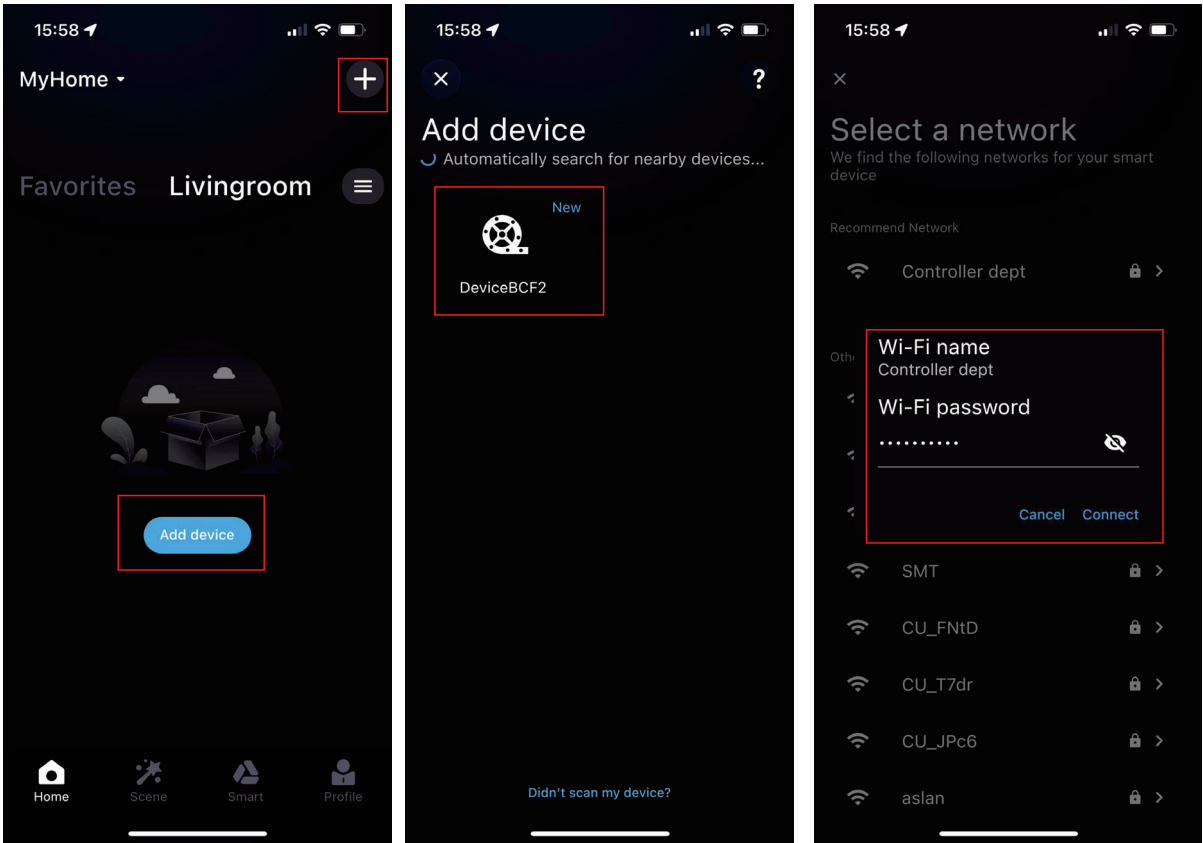
### IV. How to connect the controller to Wi-Fi network?

1) Register/Login your Surplife account.

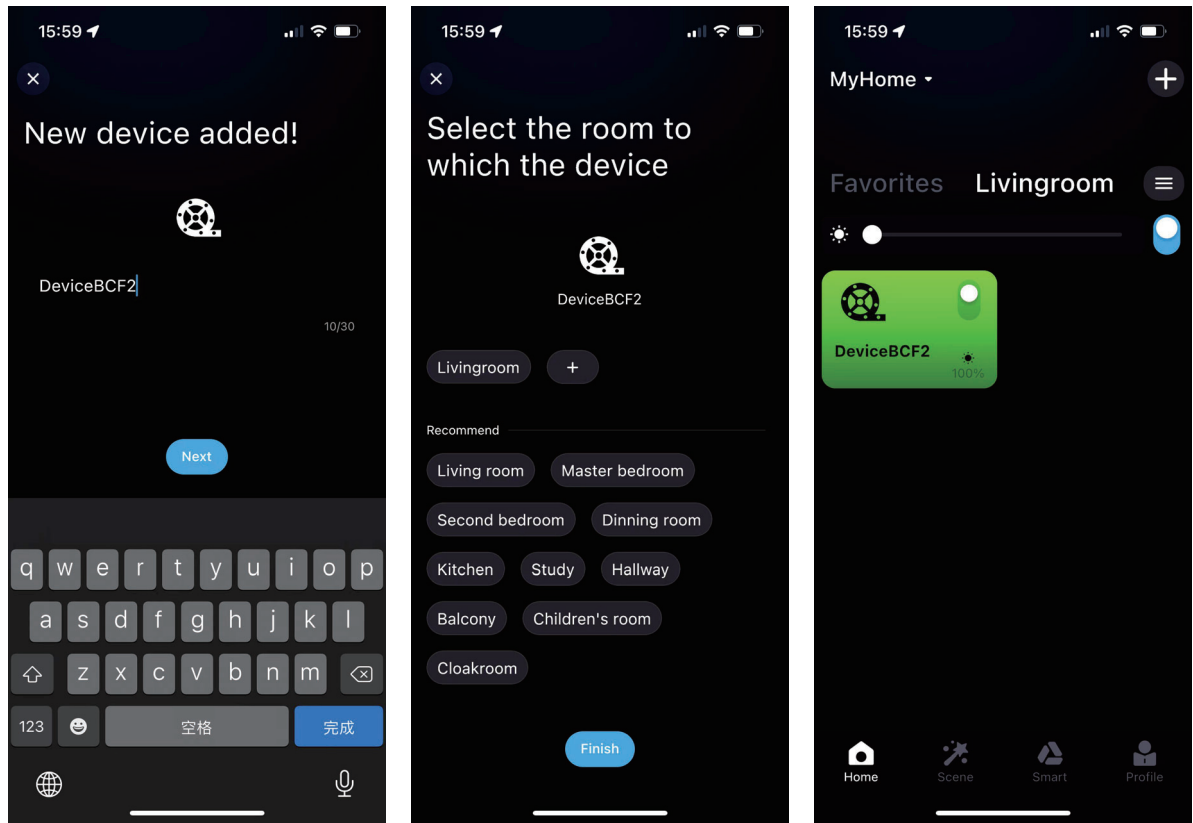


2) Open your phone Bluetooth, turn on the device.

3) Enter “Surplife” app, tap “Add Device” or click “+” to add the device. Then select your Wi-Fi network(Only works with 2.4Ghz network), enter the password



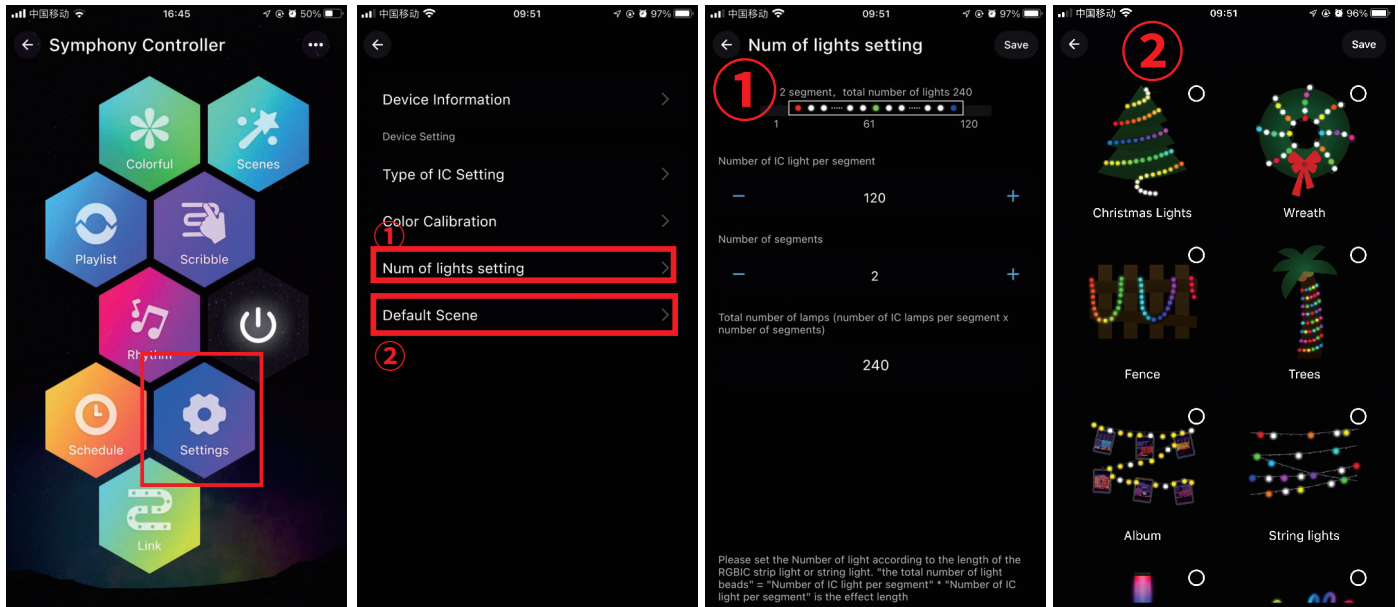
4) The device name can be modified and select the room after successfully connecting to Wi-Fi network.





## V.About Settings:

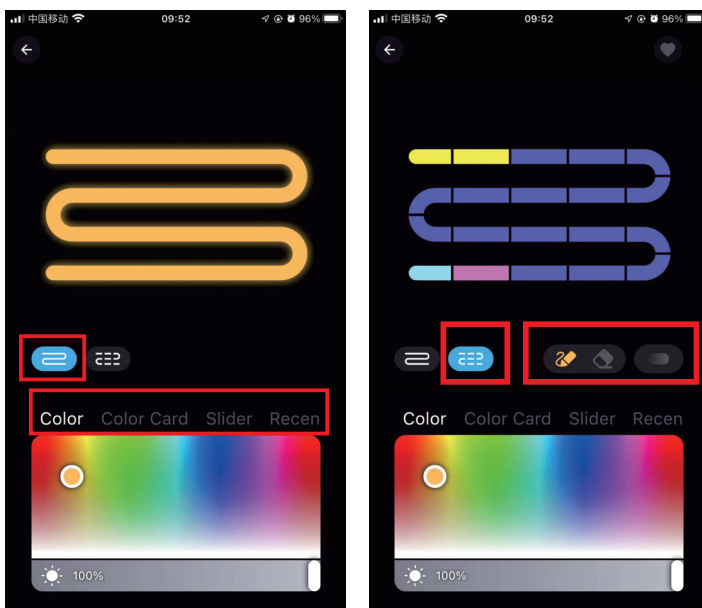
- 1) In the setting interface, you can set the IC model, color correction, number of points (Total number of points can not exceed 300 in each segment and total LED chips quantity can not exceed 2048)
- 2) The setting of IC number is applied to the smearing function



## VI.Detailed introduction of APP functions:

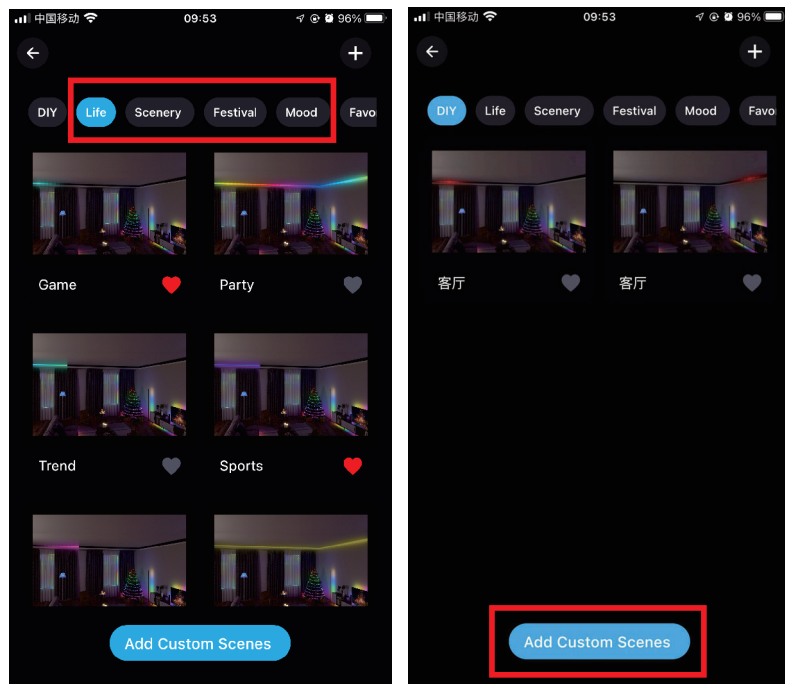
### 1) Multi color function

The color of the light can be adjusted by the whole and each segment. App provides different columns for color selection or editing, and the brightness can also be adjusted. In the segmentation interface, users can freely smear or erase the color of each segment, and also set the gradient effect.



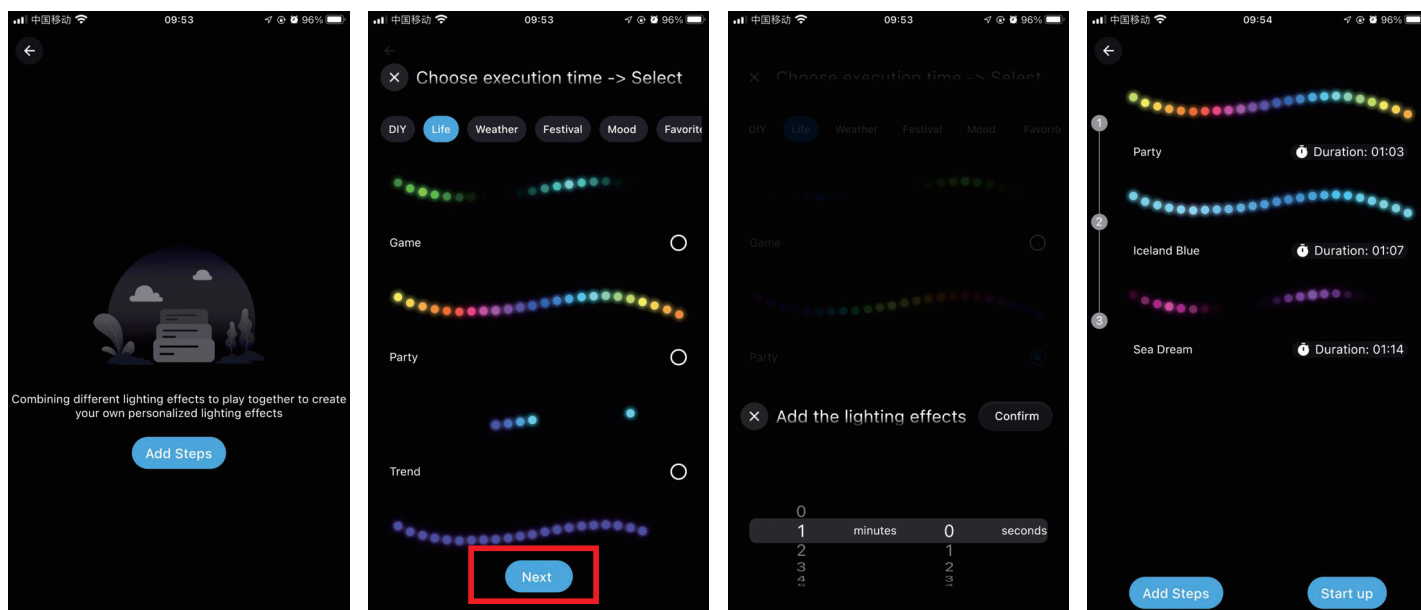
## 2) Scene settings

There are Four Build-in scenes: "Life", "Scenery", "Festivals", "Mood", and click "DIY" or "Collection" to create your favorite light effect.



## 3) Playlist mode

Multiple light dynamic modes built in, can set the time of lighting effects and enter cycle mode. Select different scene modes, then set the duration of each scene respectively, and play it by combining the sequence of different lighting effects.



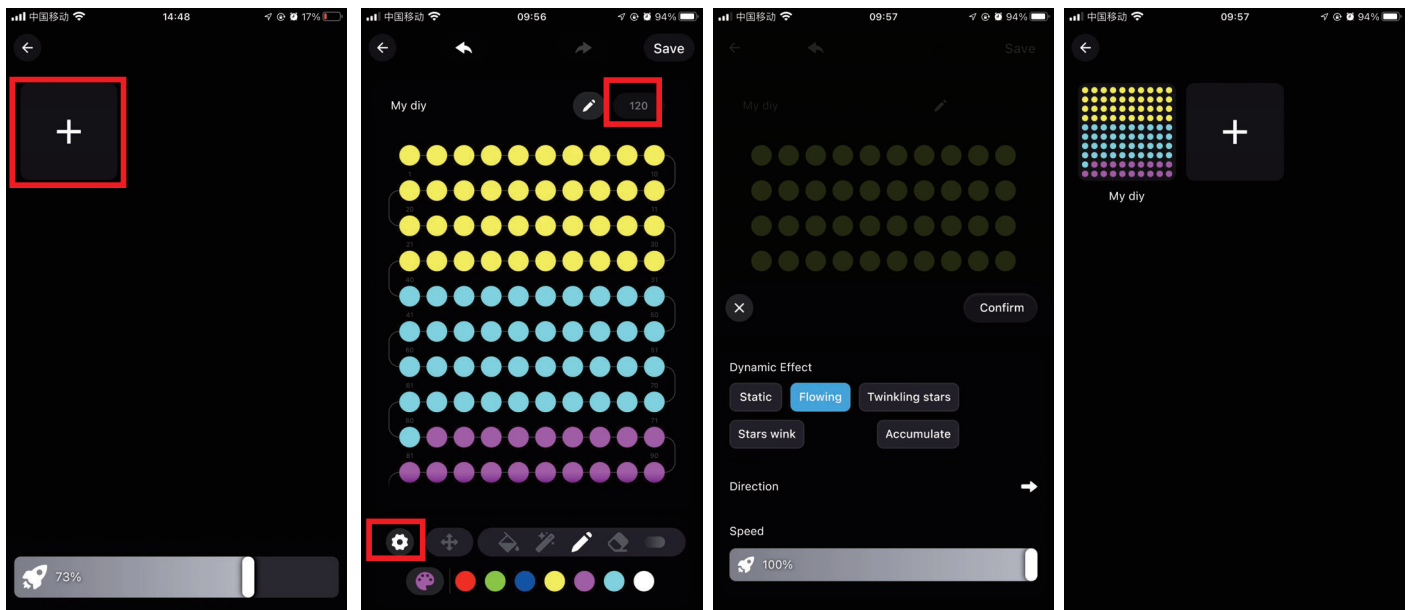


## 4) Smear function

Click “+” to DIY the lighting color and dynamic effects then save it.

Before DIY, please set the number of IC in "Settings" to ensure that the number of lights is consistent with the device, Otherwise, the lighting effect is incorrect.

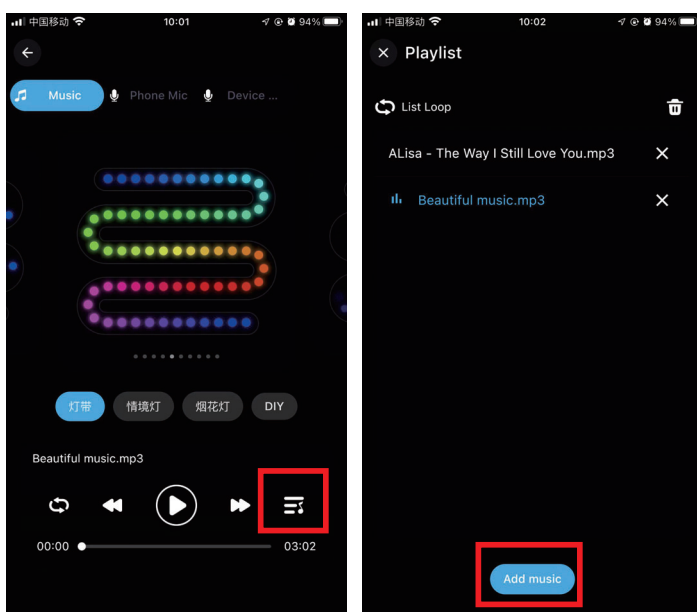
Before customize, please ensure that the IC number in app setting is the same as the light device, otherwise, the lighting effect will be incorrect.



## 5).Music Mode

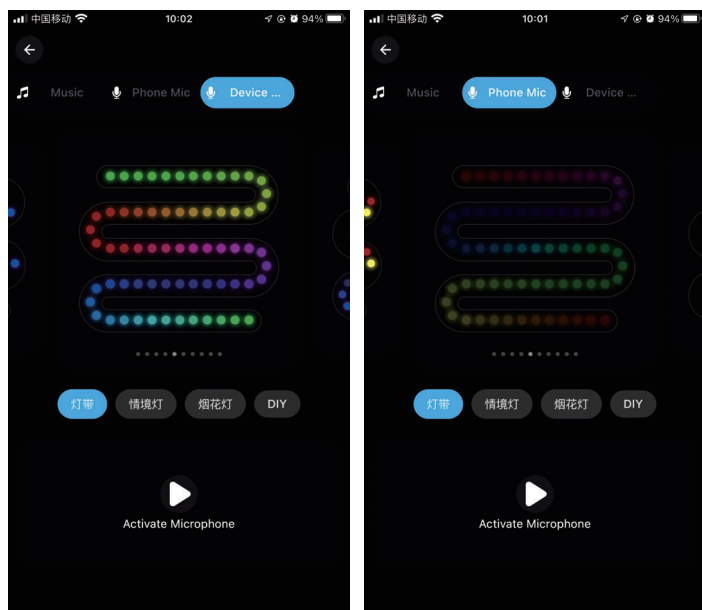
### 1.Synchronization function of lighting and music rhythm.

Click "Add Music" > Import a music file or import it from the built-in music library.



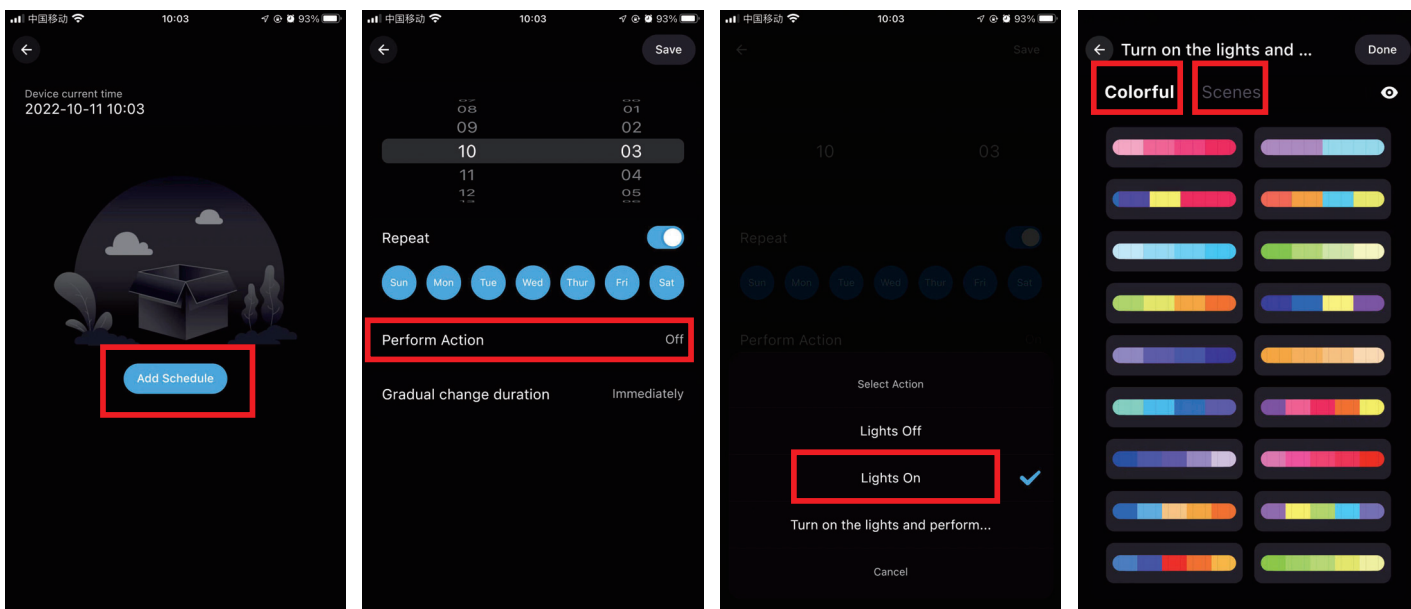
## 2.MIC

The lights color will change with the sound rhythm when your phone microphone catches the sound. The microphone sensitivity can be adjusted by the slider. There are two ways to input the audio signal on the controller, built in APP microphone and external microphone (For sound control version).



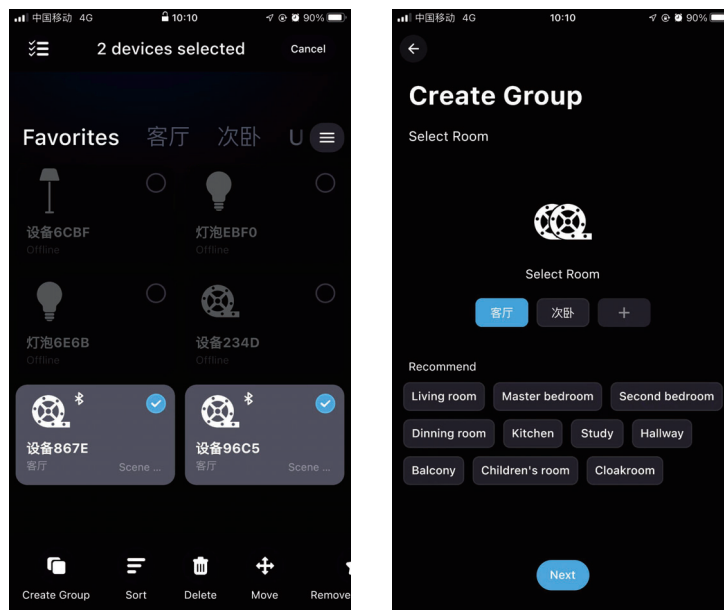
## 6) Light timer

Smart lights automatically come on and off at given times through the timer function, choose your favorite effect and color then save it.



## 7) Group Control

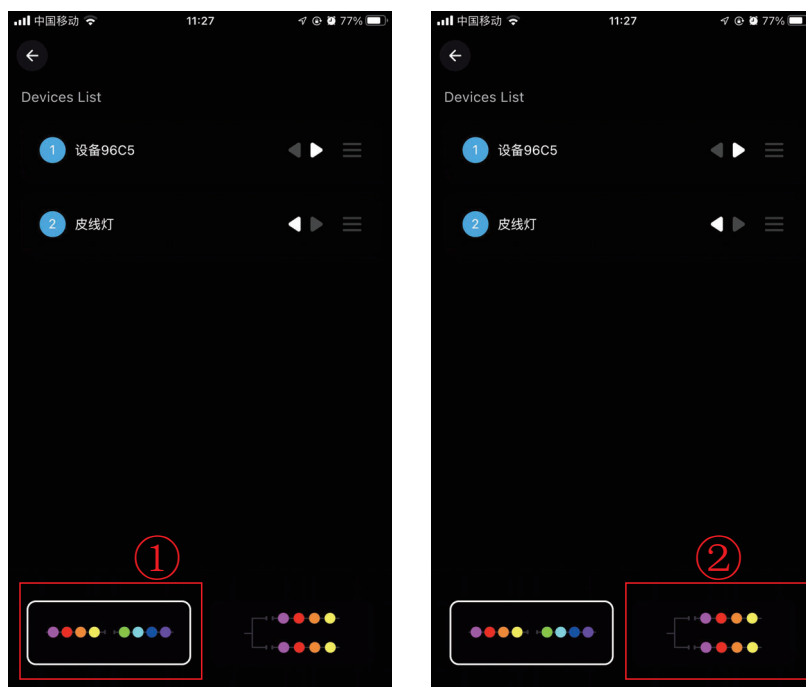
This mode allows you to create different groups to control more than one controllers at the same time.



## 8).Link

Setting a group for the strip lights, enjoy the linkage lighting effect. Hold and drag the device on the list to change the order and the direction.

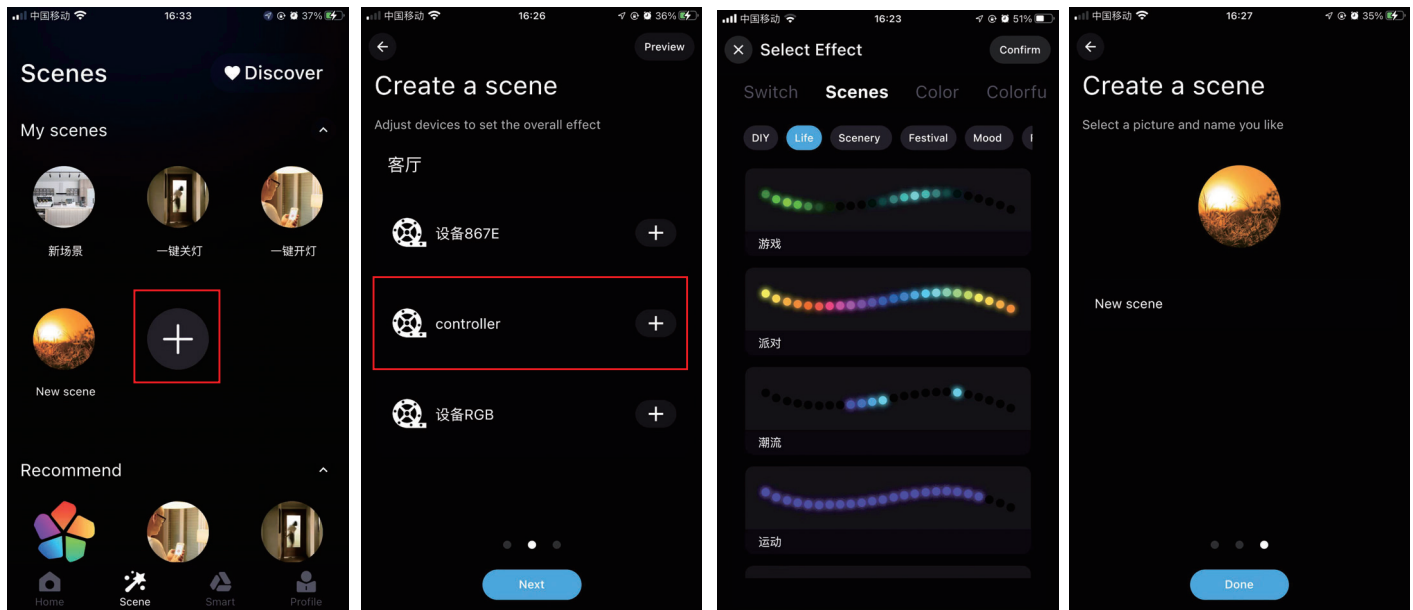
- ①The grouped light strips synchronized Linkage
- ②The grouped light strips change sequentially



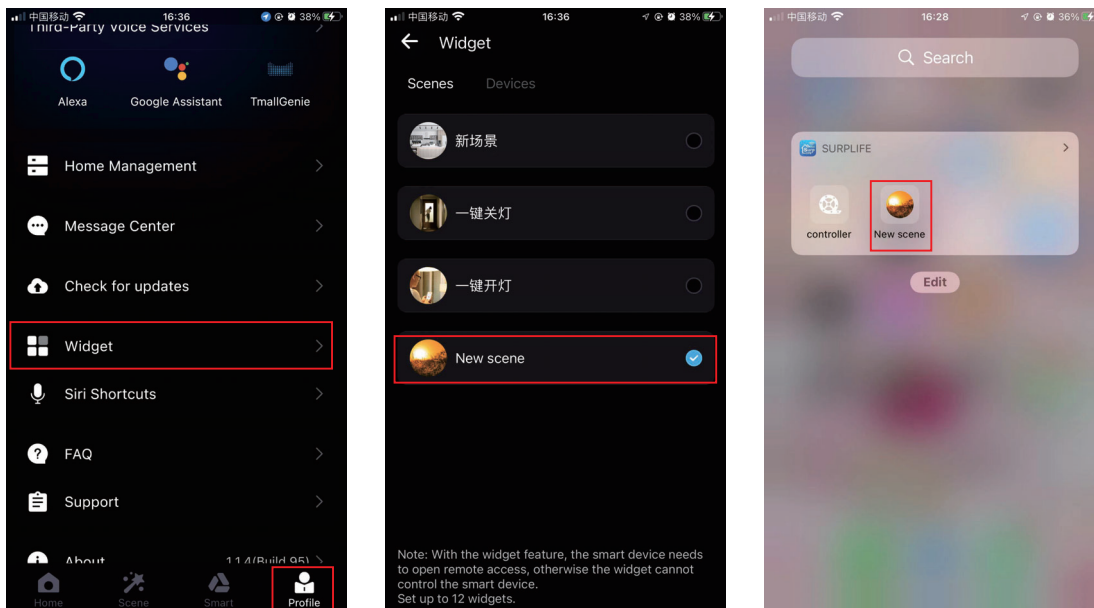
## 9). Apple IOS system widget added (also supports Android phones)

Steps:

1. Create a scene for your light, and add a command for him when you use the widget.



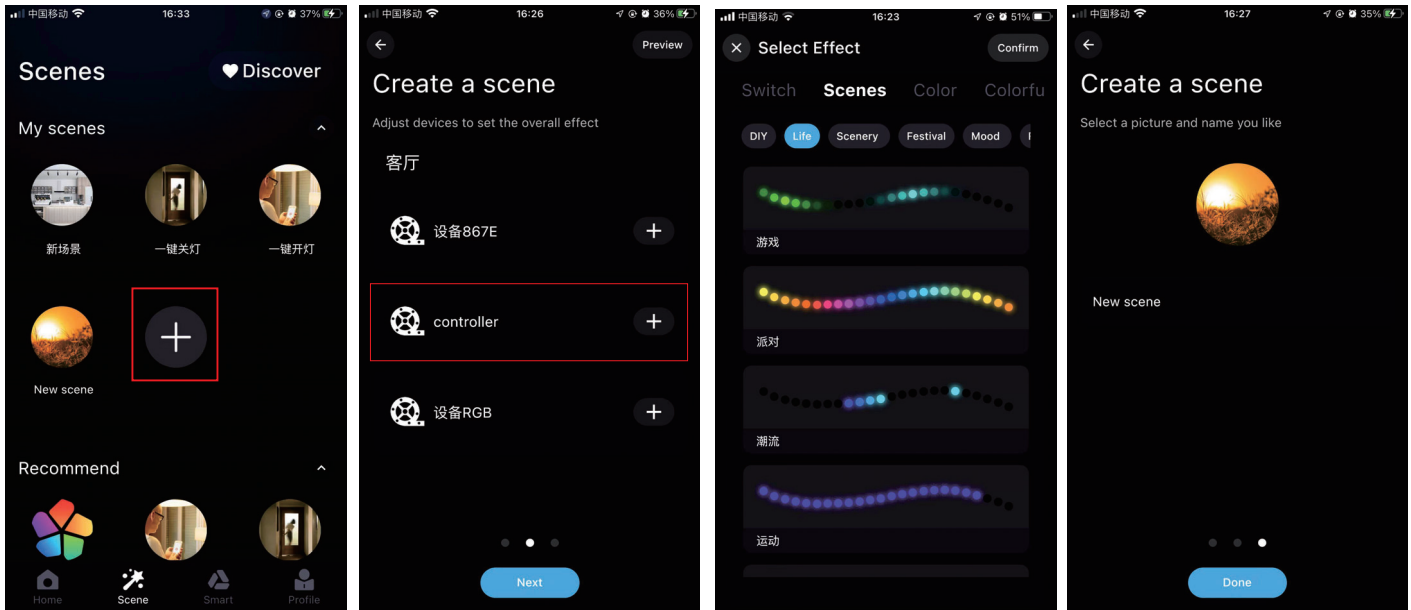
2. Enter the page "Profile" > Tap "Widget" > Add the scene to Widget. Then Add "Surplife" app to Widget



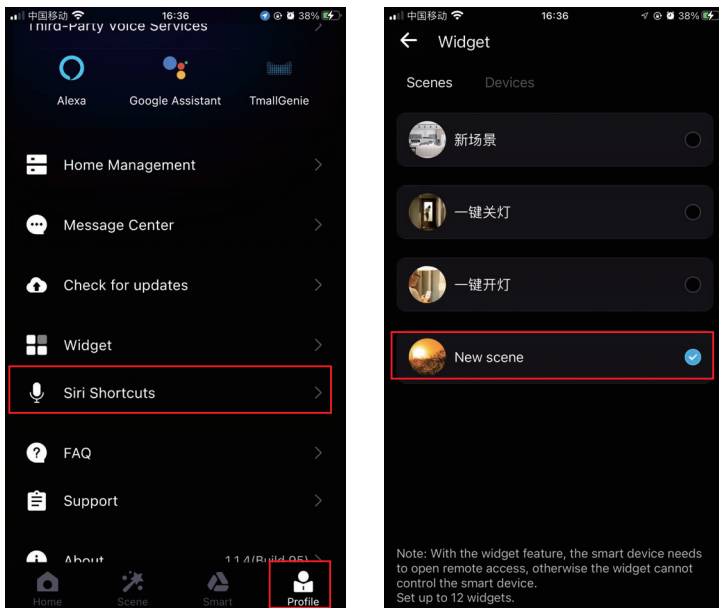
## 10)Siri Shortcuts-IOS

Note:

- 1.Siri only can control the scene.
- 2.IOS 12.0 and above systems have their own shortcut function.
- 3.Pls make sure your device is "Cloud Online".



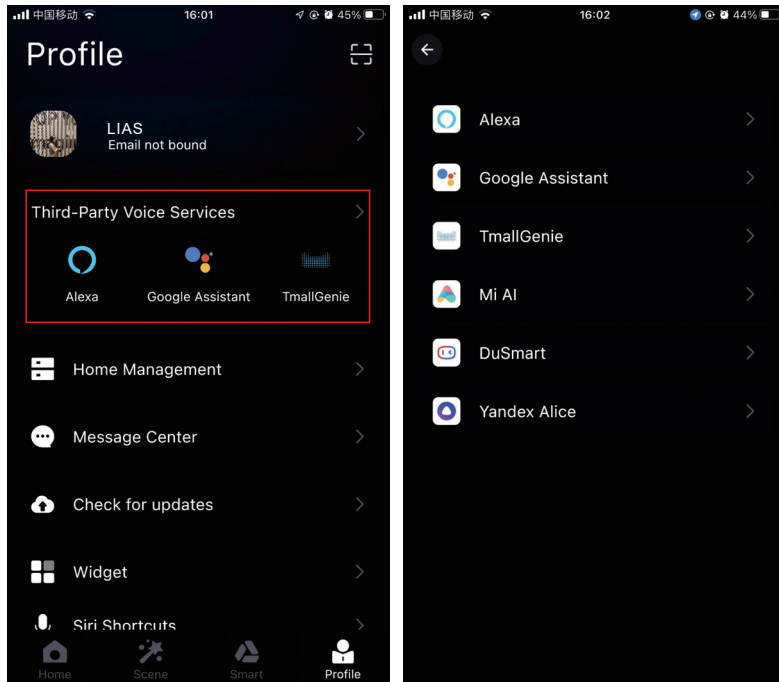
3. Enter the page "Profile" > Tap "Siri Shortcuts" > Add the scene to here.



4.Ask Siri: Turn on the {Scene Name}

## 11) Third-party platform

You can choose the third-party voice service platform (Alexa, Google Home, Tmall Genie, etc.) and bind the platform according to the guidance. After the connection is successful, you can start the voice control, which is convenient and fast.



## Attentions

a) Please use the product in a dry environment. b) For input voltage, please use the DC voltage within the specified range as instructed in the manual, must not connect into 220V AC directly. c) The product is requested common anode connection. The wrong connection will cause a malfunction.



**FCC Warning:**

This equipment has been tested and found to comply with the limits for a Class B digital device, pursuant to part 15 of the FCC Rules. These limits are designed to provide reasonable protection against harmful interference in a residential installation. This equipment generates, uses and can radiate radio frequency energy and, if not installed and used in accordance with the instructions, may cause harmful interference to radio communications. However, there is no guarantee that interference will not occur in a particular installation. If this equipment does cause harmful interference to radio or television reception, which can be determined by turning the equipment off and on, the user is encouraged to try to correct the interference by one or more of the following measures:

- Reorient or relocate the receiving antenna.
- Increase the separation between the equipment and receiver.
- Connect the equipment into an outlet on a circuit different from that to which the receiver is connected.
- Consult the dealer or an experienced radio/TV technician for help.

**Caution:** Any changes or modifications to this device not explicitly approved by manufacturer could void your authority to operate this equipment.

This device complies with part 15 of the FCC Rules. Operation is subject to the following two conditions:

(1) This device may not cause harmful interference, and (2) this device must accept any interference received, including interference that may cause undesired operation.

This equipment complies with FCC radiation exposure limits set forth for an uncontrolled environment. This equipment should be installed and operated with minimum distance 20cm between the radiator and your body.