

尺寸：105x148.5mm 材质：超感米100g 折页方式：风琴折

正面

ProtoArc

EKM01 PI us-M

User Manual

Dual Mode Ergonomic
Keyboard and Mouse Combo

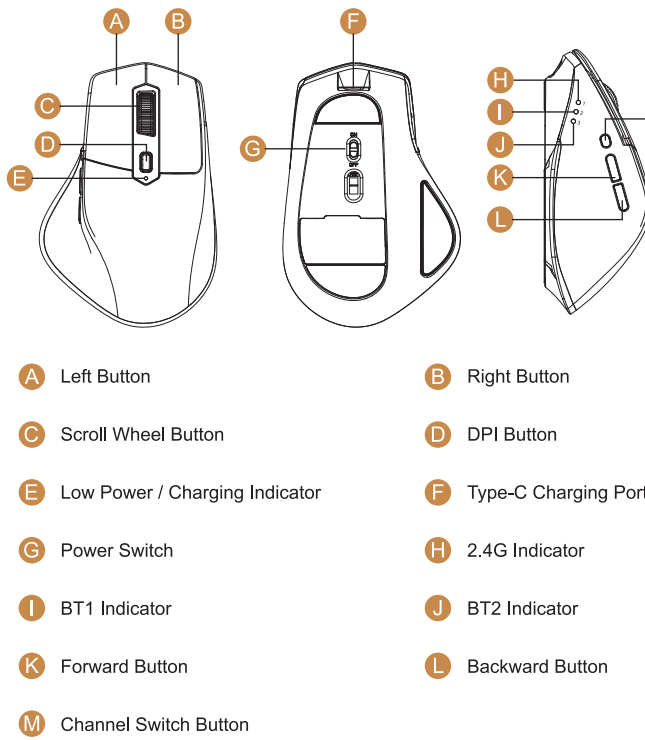
support@protoarc.com
www.protoarc.com

CONTENTS

Product Features	2
2.4G USB Connection	4
Mouse Bluetooth Connection	5
Keyboard Bluetooth Connection	6
How to Switch Mouse Device Channels	7
How to Switch Keyboard Device Channels	7
Charging Guide	8
Multimedia Function Button	9
Product Specification	10
Sleep Mode	11
Tips	11
Packing List	11

- 1 -

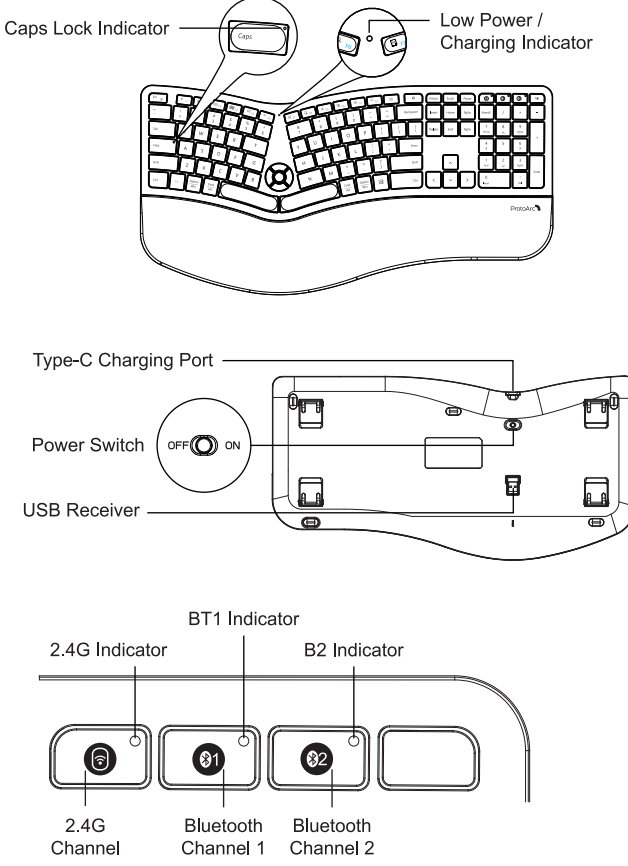
Product Features



DPI Button

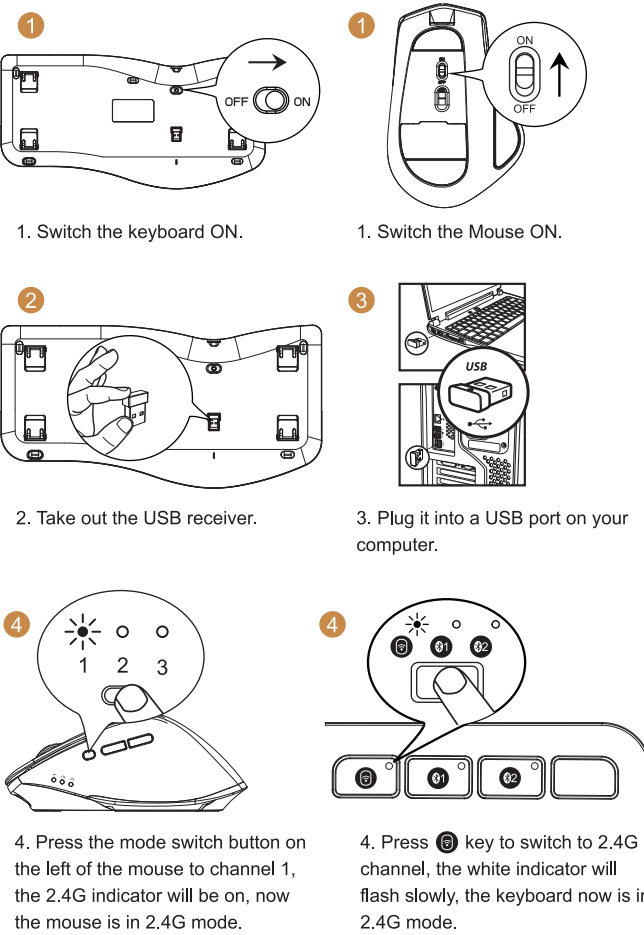
Press the DPI button to adjust the cursor sensitivity. A single flash of indicator light corresponds to DPI level 800, two to 1300, and three to 2000.

- 2 -



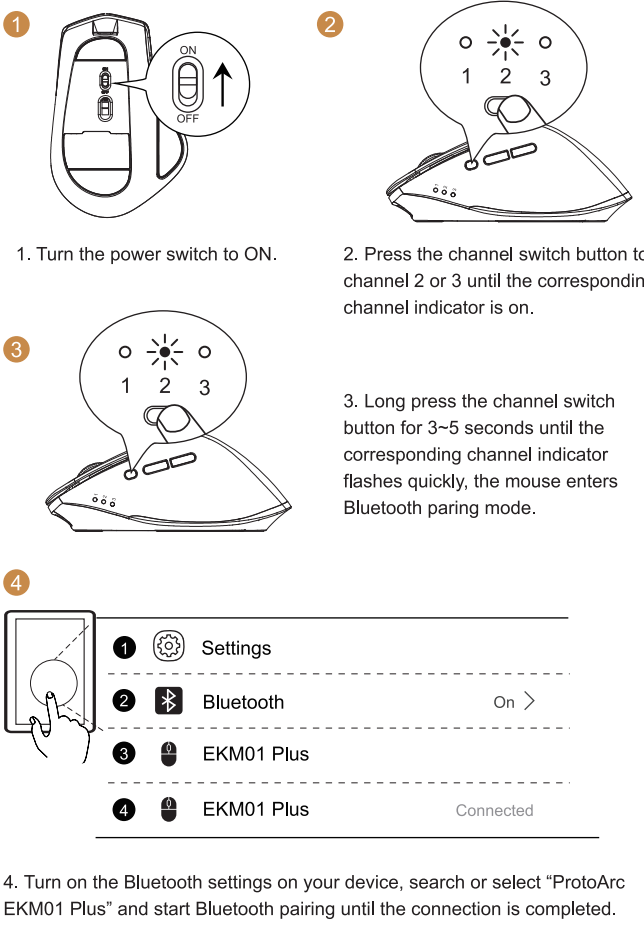
- 3 -

2.4G USB Connection



- 4 -

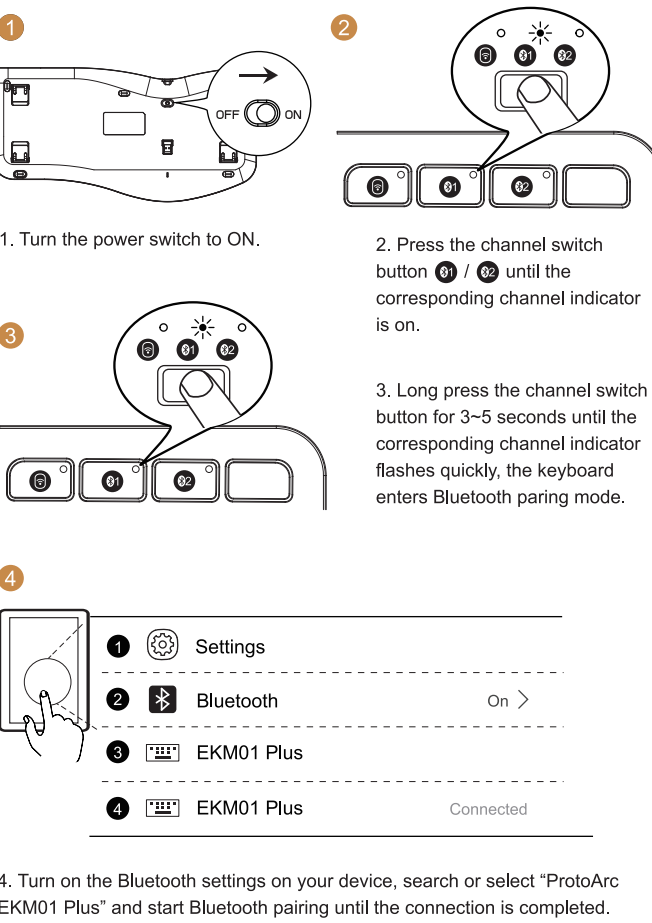
Mouse Bluetooth Connection



- 5 -

反面

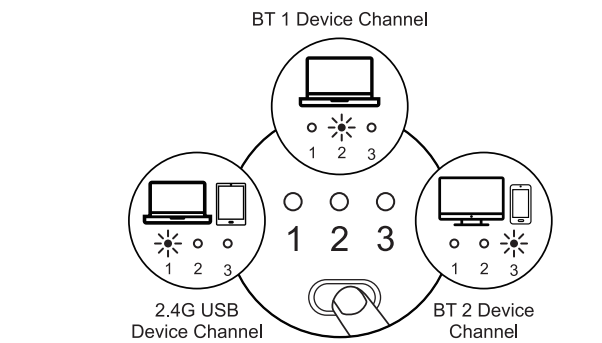
Keyboard Bluetooth Connection



- 6 -

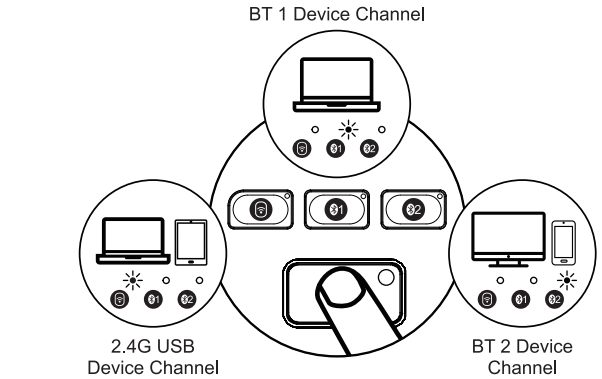
How to Switch Mouse Device Channels

After BT1, BT2 and 2.4G USB mode is connected, press the mode switch button on the left side of the mouse to switch between multiple devices.



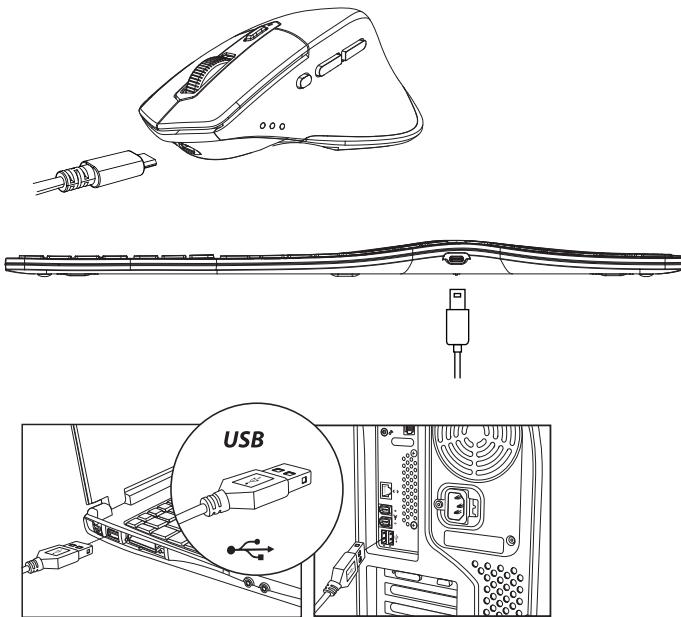
How to Switch Keyboard Device Channels

After BT1, BT2 and 2.4G USB mode is connected, press the corresponding channel key to switch between devices.



- 7 -

Charging Guide



- When the battery is low, the indicator light will turn red and start flashing until the keyboard/mouse is turned off.
- Insert the Type-C port into the Keyboard/Mouse and the USB-A port into the computer to charge, the red light stays on while charging.
- It takes 2-3 hours for one cycles full charged, and the indicator turns green when fully charged.

- 8 -

Multimedia Function Button

Buttons	Windows	Android	iOS	MAC OS
* (Decrease brightness)	Decrease brightness	Decrease brightness	Decrease brightness	Decrease brightness
* (Increase brightness)	Increase brightness	Increase brightness	Increase brightness	Increase brightness
Window switching	Window switching	/	Multi-window preview	Multi-window preview
Multi-window preview	/	App switching	App switching	App switching
Show desktop	/	/	Show desktop	Show desktop
Search	Search	Search	Search	Search
Select all	Select all	Select all	Select all	Select all
Copy	Copy	Copy	Copy	Copy
Cut	Cut	Cut	Cut	Cut
Paste	Paste	Paste	Paste	Paste
Mute	Mute	Mute	Mute	Mute
Home	Home	Home	Home	/
Screenshot	Screenshot	Screenshot	Screenshot	Screenshot
Open Setting	/	/	/	/
Lock	/	Lock	Lock	Lock
Volume up	Volume up	Volume up	Volume up	Volume up
Volume down	Volume down	Volume down	Volume down	Volume down
Previous	Previous	Previous	Previous	Previous
Play&Stop	Play&Stop	Play&Stop	Play&Stop	Play&Stop
Next	Next	Next	Next	Next
Press FN+ESC to turn ON / OFF the FN function				

NOTE: The FN function is for alternate commands (F1-F12 and multimedia functions are dual-use keys).

- 9 -

Product Specification

Keyboard	
Compatible Operating Systems	2.4G: Windows System Bluetooth: Windows 8, Windows 10 or above, Mac OS X 10.12 or above, Android 4.3 or above.
Battery Capacity	500mAh
Sleep Time	Enter into the sleep mode after no operation of 60 minutes
Battery Life	1000 times charge and discharge
Key Life	3 Millions Strokes
Standby Time	≥ 365 Days
Wake Up Way	Press any key
Operating Distance	8 m / 26 ft
Working Current	≤3mA
Keyboard Dimension	480.1 x 244.4 x 25.6 mm / 18.9 x 9.6 x 1.0 in
Mouse	
Compatible Operating Systems	2.4G: Windows System Bluetooth: Windows 8, Windows 10 or above, Mac OS X 10.12 or above, Android 4.3 or above.
Working Voltage	3.7V
Working Current	≤3.5mA
DPI	800-1300-2000
Sleep Time	60 mins
Working Time	140 hours
Charging Time	2-3 hours
Battery Capacity	500mAh
Wake Up Way	Press any button
Operating Distance	8 m / 26 ft
Standby Time	100 Days
Mouse Dimension	124.6 x 83.6 x 50.4 mm / 4.9 x 3.3 x 2.0 in

- 10 -

Sleep Mode

- When the keyboard is idle for more than 60 minutes, it will automatically enter sleep mode and the indicator light will turn off.
- To wake up the keyboard, simply press any key on the keyboard, and it will be ready within 3 seconds. The indicator light will light up again.

Tips

- If the Bluetooth connection is not working properly, turn off and turn on the keyboard or to restart the device's Bluetooth and attempt to reconnect. Or delete the extra Bluetooth option name in the Bluetooth connection list of the device and reconnect.
- To switch to a successfully connected channel, press the channel button and wait for 3 seconds before continuing to use.
- The keyboard has a memory function. When it connected on a specific channel, turn off the keyboard and turn on again, they will automatically connect to the default channel and this channel indicator is on.

Packing List

- 1 x Wireless Bluetooth Keyboard
- 1 x Wireless Bluetooth Mouse
- 1 x USB Receiver
- 1 x Type-C Charging Cable
- 1 x User Manual

- 11 -

FCC STATEMENT :

This device complies with Part 15 of the FCC Rules. Operation is subject to the following two conditions:

This device may not cause harmful interference, and

This device must accept any interference received, including interference that may cause undesired operation.

Warning: Changes or modifications not expressly approved by the party responsible for compliance could void the user's authority to operate the equipment.

NOTE: This equipment has been tested and found to comply with the limits for a Class B digital device, pursuant to Part 15 of the FCC Rules. These limits are designed to provide reasonable protection against harmful interference in a residential installation. This equipment generates uses and can radiate radio frequency energy and, if not installed and used in accordance with the instructions, may cause harmful interference to radio communications. However, there is no guarantee that interference will not occur in a particular installation. If this equipment does cause harmful interference to radio or television reception, which can be determined by turning the equipment off and on, the user is encouraged to try to correct the interference by one or more of the following measures:

Reorient or relocate the receiving antenna.

Increase the separation between the equipment and receiver.

Connect the equipment into an outlet on a circuit different from that to which the receiver is connected.

Consult the dealer or an experienced radio/TV technician for help.

RF warning statement:

The device has been evaluated to meet general RF exposure requirement. The device can be used in portable exposure condition without restriction.

- English: "

This device complies with Industry Canada licence-exempt RSS standard(s). Operation is subject to the following two conditions:

(1) this device may not cause interference, and

(2) this device must accept any interference, including interference that may cause undesired operation of the device."

- French:"

Le présent appareil est conforme aux CNR d'Industrie Canada applicables aux appareils radio exempts de licence. L'exploitation est autorisée aux deux conditions suivantes :

(1) l'appareil nedit pas produire de brouillage, et

(2) l'utilisateur de l'appareil doit accepter tout brouillage radioélectrique subi, même si le brouillage est susceptible d'en compromettre le fonctionnement."