

# Wi-Fi camera manual

## I. Introduction to appearance:

Our mini WiFi camcorder does not have a built-in battery, you need to connect the power supply (3.7V-5V/1A-2A charging bank, charger, etc.). There is no switch button set on the camera. The camera will turn on automatically after the power is turned on.

## II. APP Download Method

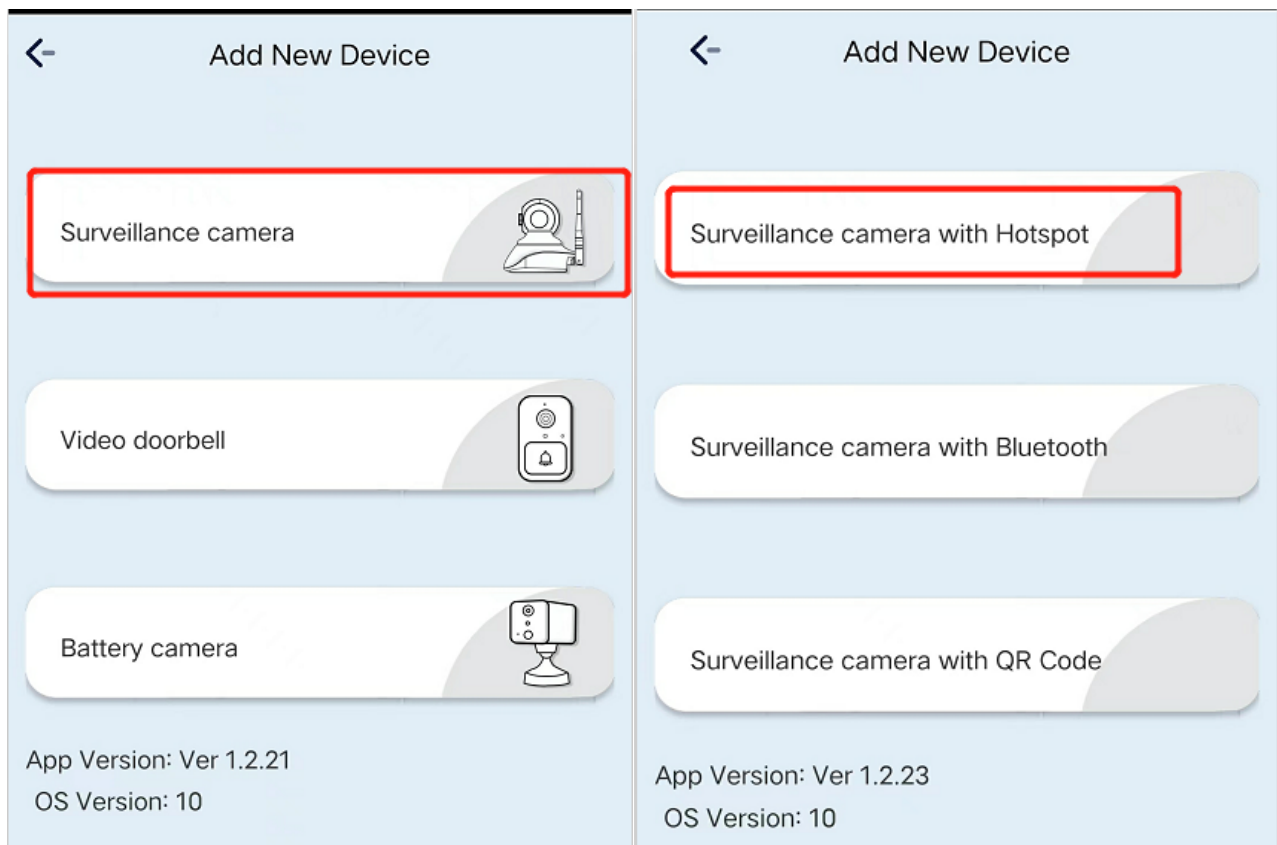
1. Android mobile phones can open the browser to scan the QR code below or search for [ULooka] to download; IOS phones come with cameras, etc., scan the QR code below or search for downloads in the APP Store.
2. Open the app, read the "Privacy Policy", and click "Agree".  
APP pop-up prompt: Message push notification permission, APP positioning permission, please go to Settings and Confirm.



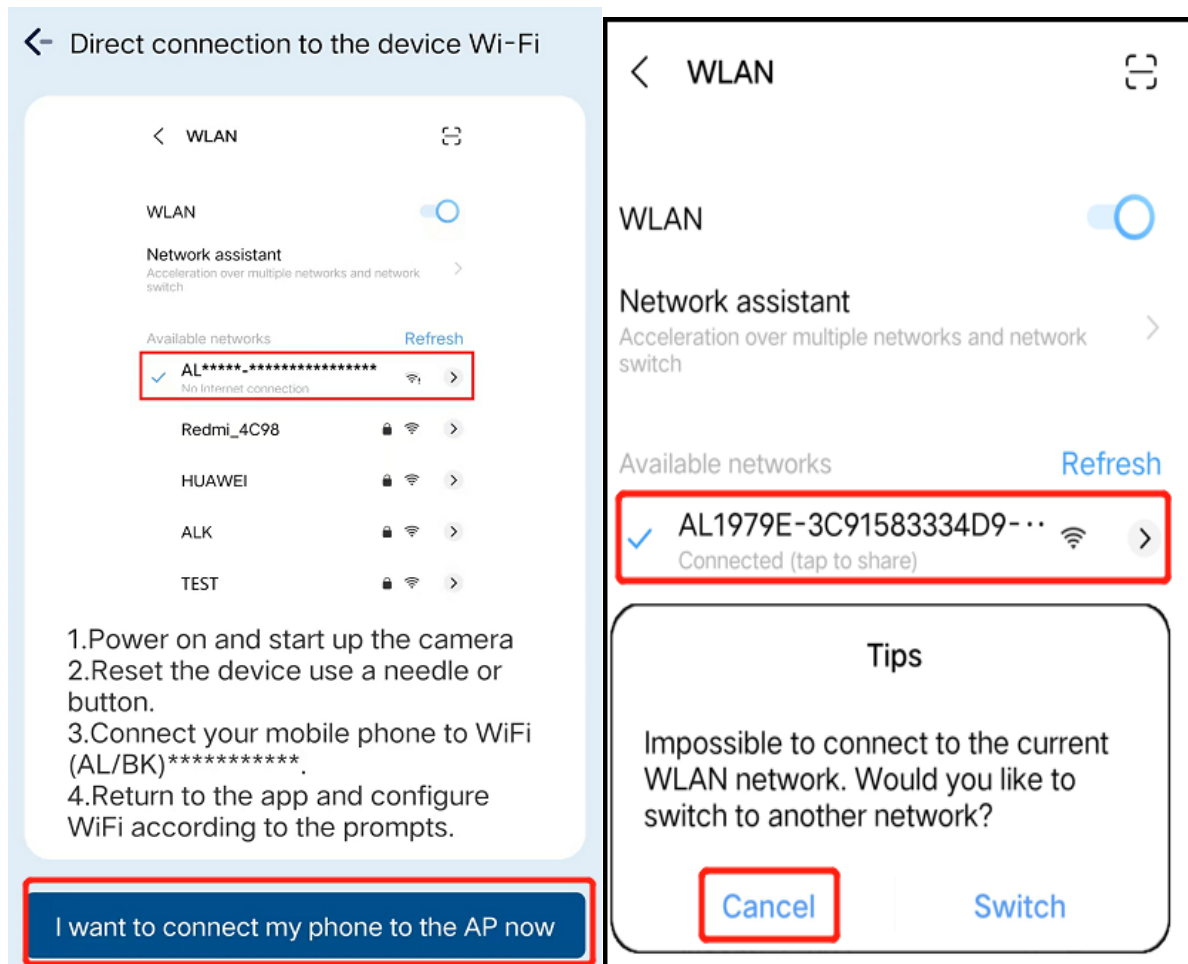
**ULooka**

## III. Network configuration

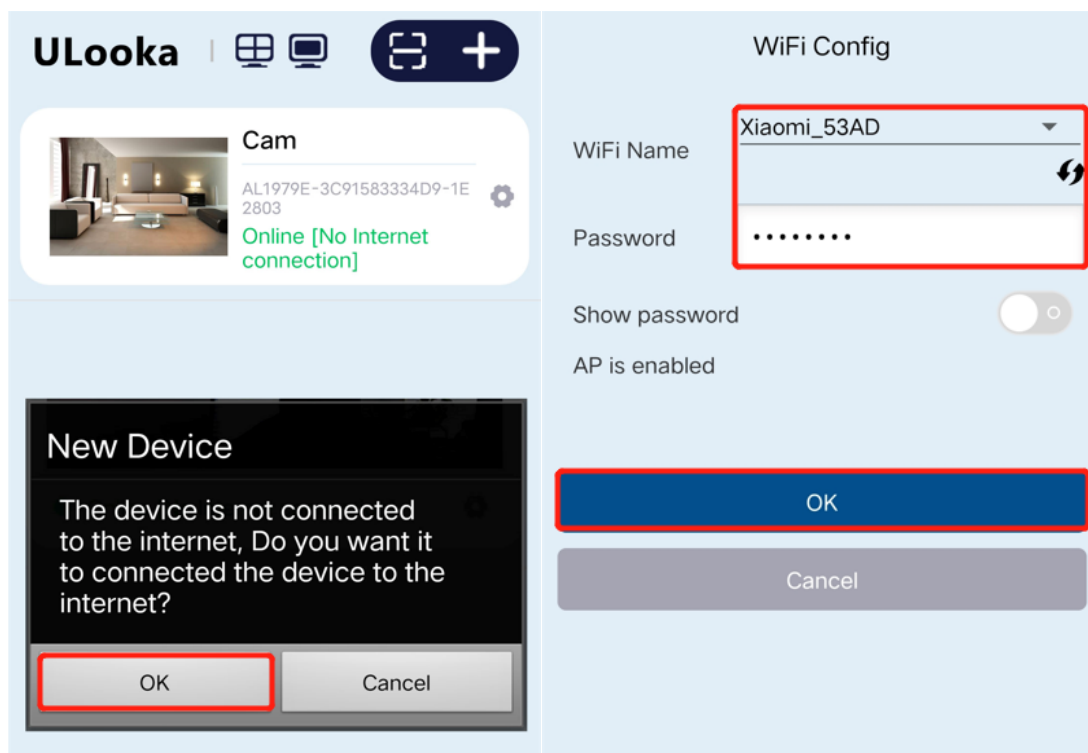
1. Connect the device to the power supply, press and hold the reset button to reset, and the indicator light "flashes slowly" for about 3 seconds.
2. Open the APP, click Add Device, and select "Surveillance Camera with Hotspot " (as shown in the figure).



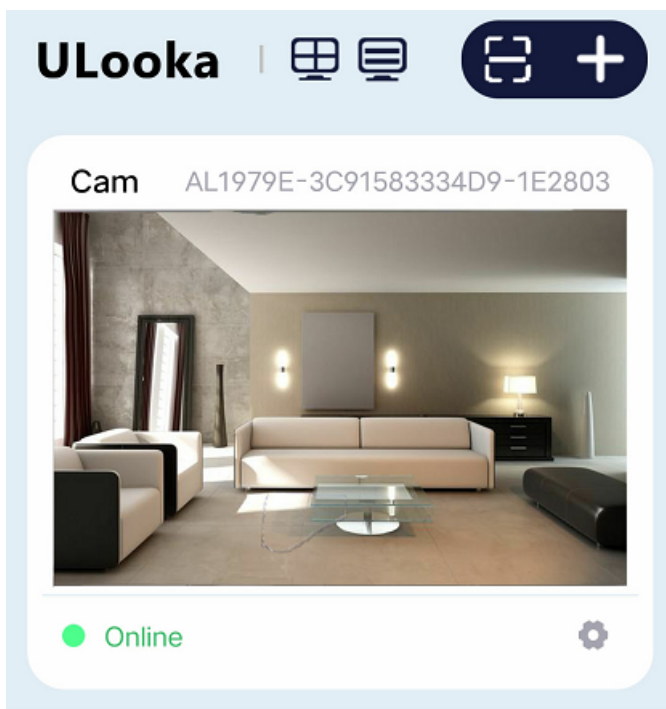
- Click "I want to connect my phone to the AP now", when jumping to the WLAN interface, select the device hotspot connection starting with **"ALxxx"**; For IOS phones, you need to manually open the WLAN interface and select the device hotspot connection.  
Note: When prompted with something like "The current network cannot access the Internet, please switch to another network", please keep the device hotspot connected (as shown below).



4. After the connection is successful, the Android phone will automatically jump to the APP home page, please configure WIFI according to the prompts (as shown below).



5. After the network configuration is successful, the device displays "online", that is, the network configuration is successful, and the APP can be used to remotely control and access.



#### IV. Notes

1. The applicable working temperature of this product is  $-10^{\circ}\text{C} \sim 50^{\circ}\text{C}$ , do not use this product in the environment where the temperature is too high or too low.
2. This product is a precision electronic product, do not use this product in an environment that is excessive humidity or may cause water ingress of this product, so as not to affect normal use.
3. In order to better use this product, avoid the front and side of the lens close to glass, white walls and other reflective objects, so as not to cause the picture near bright, far dark or white phenomenon.
4. Please ensure that this product is installed within the range of Wi-Fi signal coverage and placed in a better location with Wi-Fi signal as much as possible; Try to install away from microwave ovens, etc., where it may affect the signal.
5. The device only supports 2.4G WiFi, and does not support 5G or WIFI with special symbols for the time being.
6. The device supports TF card video recording storage, and TF card only supports FAT format.

#### FCC Warning Statement

Changes or modifications not expressly approved by the party responsible for compliance could void the user's authority to operate the equipment. This equipment has been tested and found to comply with the limits for a Class B digital device, pursuant to Part 15 of the FCC Rules. These limits are designed to provide reasonable protection against harmful interference in a residential installation. This equipment generates uses and can radiate radio frequency energy and, if not installed and used in accordance with the instructions, may cause harmful interference to radio communications. However, there is no guarantee that interference will not occur in a particular installation. If this equipment does cause harmful interference to radio or television reception, which can be determined by turning the equipment off and on, the user is encouraged to try to correct the interference by one or more of the following measures:

- - Reorient or relocate the receiving antenna.
- - Increase the separation between the equipment and receiver.
- - Connect the equipment into an outlet on a circuit different from that to which the receiver is connected.
- - Consult the dealer or an experienced radio/TV technician for help.

This device complies with part 15 of the FCC Rules. Operation is subject to the following two conditions: (1) This device may not cause harmful interference, and (2) this device must accept any interference received, including interference that may cause undesired operation.

#### RF Exposure Statement

To maintain compliance with FCC's RF Exposure guidelines, This equipment should be installed and operated with minimum distance of 20cm the radiator your body. This device and its antenna(s) must not be co-located or operation in conjunction with any other antenna or transmitter.