

# AMTIFO

## Solar Magnetic Backup Camera & Monitor Kit

### Product Manual / Installation Instructions



**Please read this manual thoroughly before operating the device, and  
keep it for future reference.**

**(Note: AMTIFO offers two years warranty and technical support for our products, just contact us if you meet any problem)**

## **Customer Service and Technical Support Team Email:**

**[amtifo-us@rearcamera.store](mailto:amtifo-us@rearcamera.store)**

## **Technical Support Telephone:**

**978-209-4866**

**Tel Opening hours: :Mon-Fri 9am-6pm (EST)**

### **1. Product Certificate**

**The system was Certificated by: UL & CE & FCC & RoHs & Recyclable.**



### **2. Package Includes:**

- **1\*5.0 inch Monitor**
- **1\*Suction Cup Mount**
- **1\*Magnetic Solar Camera**
- **1\*Charging plug**
- **1\*USB to Type-C Cable for Camera**
- **1\*USB to DC Cable for Monitor**

- 1\*Cigarette Lighter Adapter
- 2\*Antennas
- 1\* Instruction



### 3. Applications

This system is suitable for use in cars, pickup trucks, small RVs, campers, vans, trucks, and trailers, among other small vehicles.



If you encounter any signal issues, such as unstable image, please contact us directly for technical support, or we can provide an upgraded kit with a stronger signal to resolve this issue.

#### 4. Monitor the Working Voltage Range

**Attention:** There are certain limitations to the power supply of the monitor

**Operating Voltage Range:** 11V-24V, we recommend 12V/400mA



#### **Safety Warning:**

**1. Do not use a power supply exceeding 24V for the monitor, we recommend using a DC 12V power supply.**



## 5. Rechargeable Camera

**Camera Battery Capacity: 9600mAH**

**(1) Please fully charge the camera after receiving the product.**

You can use the charger included in the packaging or a regular mobile phone charger (5V-2A) to power the camera. Please refer to the following images for charging the camera. **When the power is plugged in, the flashing Blue light indicates that the camera is currently charging.**



**Safety Warning:**

**Micro USB Charging Input: 5V-2A ( Do not use a power source that exceeds 5V to charge the camera, as this can damage the camera)**





(2) After receiving the product, please use the button to activate the camera.

When the camera battery is completely drained, it still needs to be activated after being fully charged.

When you are not using the device, please manually turn off the power of the camera to prevent it from consuming more battery power. Attention: Every time you use the device, please manually turn on the power of the camera for the system to work properly.



**(3) When fully charged, if rear view system is continuously used while driving, it can only sustain up to 12 hours. After the battery is depleted, it needs to be charged again.**

**(4) Optimize Battery Life: Avoid charging when the camera is fully depleted. Instead, charge when battery level reaches 20%-30% to extend the camera's service life. (The camera is ready to charge when only one power light is on.)**

**(5) After receiving the product, turn on the camera and display together for a simple test before installation.**

**During the testing process, it is important to ensure that an image appears on the screen. This indicates that the system is functioning properly and can be installed in the vehicle. If no image is visible during the testing, it is recommended to check the wiring. If the issue persists and no image can be seen, please contact us immediately for assistance.**

## **6. Installation Video**

Please check the YouTube video link for installation help to ensure a safer and easier installation method.

<https://youtu.be/8KhyPFcNkic>

[Attention]: If you are unable to open the link please check if the letters were entered correctly. If you are unable to find the video, we recommend one of the 3 solutions listed below:

- 1) On [www.youtube.com](http://www.youtube.com), Search Video ID: [\*\*8KhyPFcNkic\*\*](https://youtu.be/8KhyPFcNkic);
- 2) Contact us via email at: [amtifo-us@rearcamera.store](mailto:amtifo-us@rearcamera.store) to receive the link
- 3) Use apps on your phone such as Google to scan the QR code below



## **7: Wiring Installation**

### **(1) Monitor installation**

The monitor can be powered through the cigarette lighter adapter.





**Or Plug in USB interface**



**Tips :If the display can't work by using the original USB interface on the car, then connect the 1.5A USB interface on the car charger to supply power to the display, because many USB interfaces on the car don't reach the working current of 1.5A.**

**The monitor can be mounted on the windshield or dashboard.**

**On dashboard**



**On windshield**



**Attention:** The monitor comes with a layer of screen protector. You make peel it off or save it.

## **(2) Camera Installation**

- ① The camera is magnetic, making it easy to attach and install on any location of your choice.
- ② This camera is a low-power solar camera. Please try to install the camera in the car where it shines on the sun, so that the camera can work continuously.



**Warm Tips :**

1) If your car is parked outdoors for a long time, we suggest that you can always remove the camera and put it in the car to avoid being stolen.

<Also, If the camera is stolen, you can contact us to get a half-price discount to buy a separate camera.>

2)The magnet part of our camera is a strong magnet, so when you take the camera off the car, please take it off with a little force from both hands. We are worried that you will scratch your car by taking the camera with one hand.

## **8 :The Touch Key of the Monitor**



**1) Right Key :**Press to reduce or adjust

**2) Menu Key :** Enter the menu mode , Return to the upper-level menu

**3) Left Key:** Press to increase or adjust

**4) Guide Line Key :** Turn on /off guide lines quickly

**5)OK Key:** Video Channel Switching, Split-Screen, and Confirmation

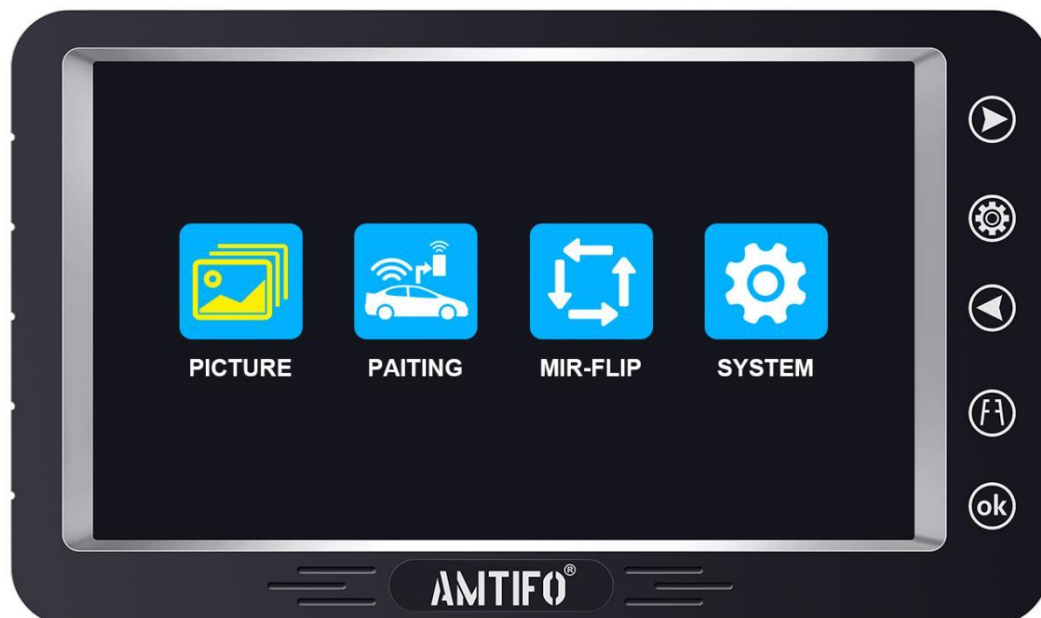
## Key

**Single/Split Screen Selection:** The default setting for the monitor is CAM1. After the image appears, Pressing the (OK) key once switches to CAM2, and pressing it twice switches to split-screen mode.



## 9: Product function introduction:

When you press the **Menu** key, you will enter menu mode and see four icons that provide different functions:



### 1) The First Icon: PICTURE

Select the first icon is PICTURE, Press the **ok** key and you can

continue to adjust **Brightness/Contrast/Saturation**

After entering, press the 'left' and 'right' keys to adjust.



2) Select the second icon Pairing,

1>>And the first after entering is pairing.



YouTube Pairing Video Link: [https://youtu.be/hDKOV6fa\\_OU](https://youtu.be/hDKOV6fa_OU)



---

**Step1 :** Make sure the monitor is powered on and the camera has power.

**Step 2:** Press the **Menu** key, select the pairing icon, and when the pairing countdown appears, immediately turn off and then turn on the camera battery, and wait for 20 seconds. If the image appears, the pairing is successful.

**Attention :** Before starting the system pairing process, please make sure that the distance between the camera and the monitor is within 5 feet.

## **2>>The Second is Turn-on voice**

When it is selected, there will be a Whether to relearn ? **Please record in a quiet environment.** Select Yes to start recording. A sound drop means that the recording is successful. **You need to repeat the wake-up word recording twice.**



After saving, you can control the opening of the display through this wake-up voice.



### 3>> The Third is Turn-off voice

When it is selected, there will be a Whether to relearn ?Select Yes to start recording. A sound drop means that the recording is successful.

You need to repeat the wake-up word recording twice.

After saving, you can control the closing of the display through this wake-up voice.



#### 4>>The Fourth is Reset language

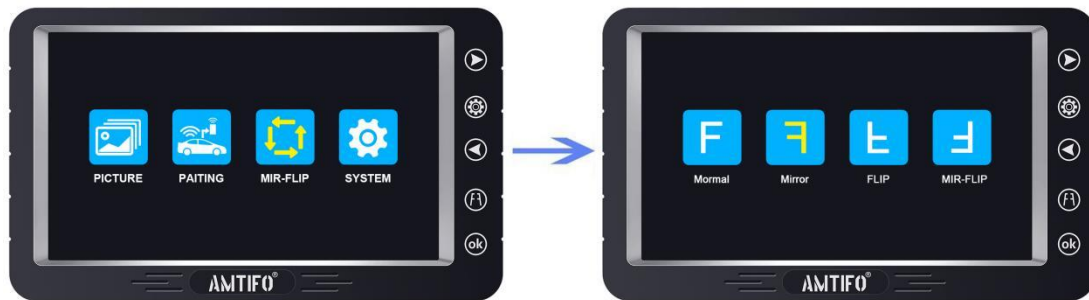
Select this then touch the ok ,you can reset the language wake-up,  
and then you can reset the wake-up



#### 3) Select the Third icon Flip,

When you select the third icon, Press the "ok" key to access this  
feature. You can then use the ' left' and' right' key to toggle between  
the rearview mirror view, the normal front view, or the vertically

flipped image as needed. (4 Options)



#### 4) The Fourth Icon: SYSTEM

When you select the Fourth icon, Press the "ok" key,you can switch Language, auto sleep, on/off guide line , default

Tip:

Under normal circumstances, please do not default settings. Because default settings requires pairing the monitor and camera again.

thank you



**Auto Sleep Function:** Select the second icon,Press the "ok" key,you can switch 30/60/90S.When the corresponding time arrives, the display will automatically rest. Press any key to trigger the display after the screen, or say the trigger sound you set before to open the display.



## 5) DIY Parking Lines

Touch the 'f1' key on the display to quickly turn on and off the lines. When the guide lines appears ,And Press and hold the 'f1' for about 3 seconds,the' V',' H' and' M' will appear in the upper left corner of the monitor. ' V',' H' and' M' are switched by touching the key. You can Adjust the height and width of guide line, and move the guide line left and right .

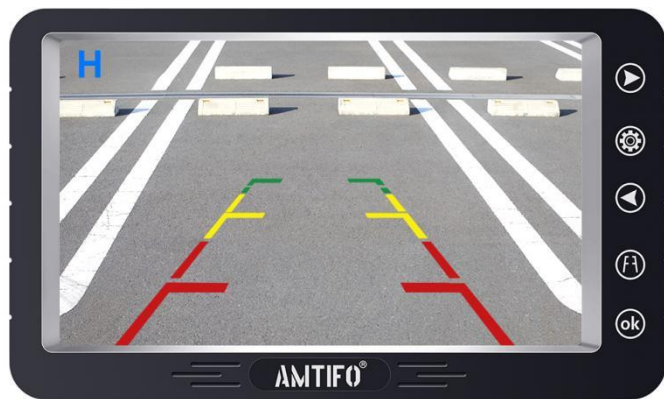
## BACKUP LINES OPTION



Backup lines on



Backup lines off



**10: The protective film on the Camera and Monitor :**

**After you install the system, you can tear off the protective film if you would like to make the image clearer.**



Protective film



Lens protective film

## **11: IP69K Waterproof**





## **12: Customer Service & About Us**

**In an automobile-interconnection era,**

**A safe and enjoyable experience is at your fingertips,**

**product and service are the foundation of AMTIFO**

**Based on the personal needs of users,we use technology to drive**

**product innovation.In the future, we will continue to explore the**

**boundaries of tech to open up a broader vision for driving.**

**Two Years Warranty and lifetime tech support is included with this product.**

**Please contact us if you have ANY issues!**



**No matter what questions you have, please feel free to contact us and  
we will do our best to provide assistance.**

**Technical Support Email: [amtifo-us@rearcamera.store](mailto:amtifo-us@rearcamera.store)**

**Thank You !**

### **13: Troubleshooting**

1) When using the system, if there is no image on the monitor, please follow these steps to troubleshoot:

A. If the monitor displays 'no signal' after showing the startup screen, please check if the camera is powered on. The blue light on the camera indicates that it is working. If it is not lit, please charge the camera first. If the camera is working properly,

please move it closer to the monitor and refer to the pairing video or instructions to pair it again.

B. If the monitor screen remains black, please first check if the voltage range supplied to the monitor is within DC 11V-24V. Then check if the car charger is working. In general, if the red indicator light on the car charger is always on, it means that the monitor is receiving power normally. If there is still no display, it is possible that the monitor has a malfunction.

2) If the camera fails to charge, please contact us immediately for a replacement. We provide 2 years warranty replacement service.

3) If the suction cup bracket falls off or is damaged, please contact us promptly to replace it.

#### FCC WARNING

This device complies with part 15 of the FCC Rules. Operation is subject to the following two conditions: (1) this device may not cause harmful interference, and (2) this device must accept any interference received, including interference that may cause undesired operation.

Any changes or modifications not expressly approved by the party responsible for compliance could void the user's authority to operate the equipment.

NOTE: This equipment has been tested and found to comply with the limits for a Class B digital device, pursuant to Part 15 of the FCC Rules. These limits are designed to provide reasonable protection against harmful interference in a residential installation. This equipment generates, uses and can radiate radio frequency energy and, if not installed and used in accordance with the instructions, may cause harmful interference to radio communications.

However, there is no guarantee that interference will not occur in a particular installation. If this equipment does cause harmful interference to radio or television reception,

which can be determined by turning the equipment off and on, the user is encouraged to try to correct the interference by one or more of the following measures:

- Reorient or relocate the receiving antenna.
- Increase the separation between the equipment and receiver.
- Connect the equipment into an outlet on a circuit different from that to which the receiver is connected.
- Consult the dealer or an experienced radio/TV technician for help.

To maintain compliance with FCC's RF Exposure guidelines, This equipment should be installed and operated with minimum 20cm distance between the radiator and your body: Use only the supplied antenna.