

142 mm

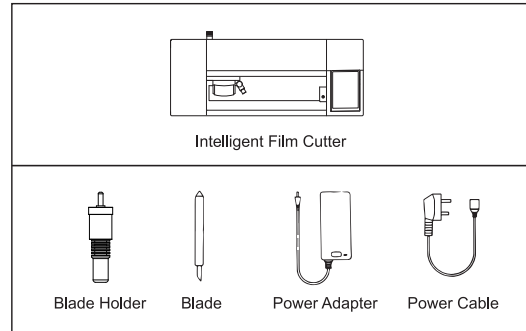
Intelligent Film Cutter

Manual

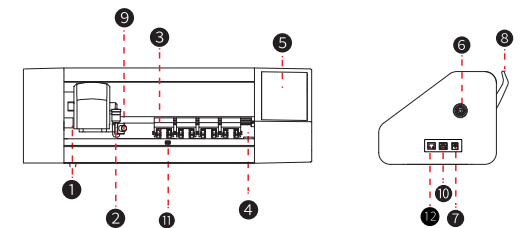
! When turning on the film cutter, first put the pinch roller down and remove the protective film under the pinch roller

76 mm

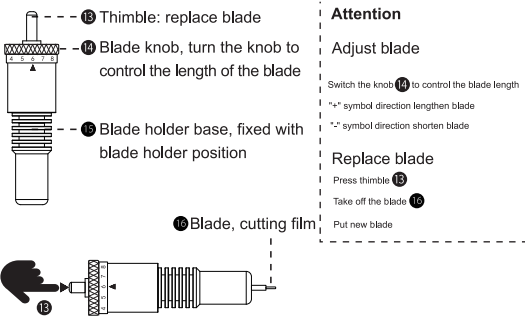
Product List



Appearance and function



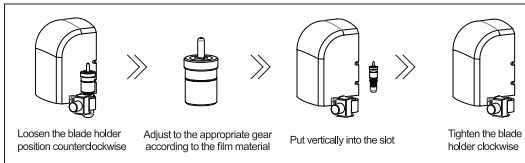
- 1 Carriage
Control the lateral move of the carriage
- 2 Blade holder
Cutting Film
See 11、12、13、14.
- 3 Pinch Roller Wheel
Fix film Vertical move
- 4 Side panel
Help to fix film position and move direction
- 5 Operation display
Touch to control device operation
- 6 Power Switch
Start the device
- 7 Power Interface
Connect power
- 8 Integrated handle
Press to control the lifting of the pinch roller
- 9 Blade Holder Position
Lock the blade holder
- 10 USB Interface
- 11 Automatic paper feed sensor
- 12 LAN port interface



Blade Level/ Cutting Pressure setting					
Blade Holder (Level)	Level 2-4	Level 4-5	Level 6-7	Level 7-8	Level 9-10
Cutting Pressure	200-250	200-300	300-400	400-500	500+
Speed	100-200	100-200	100	50-100	50
Material (Thickness)	Two Layers Back Film (0.1mm)	Two Layers Back Film (0.18mm)	Four Layers Soft Film (0.35mm)	Four Layers Soft Film Anti-explosion Film (0.45mm)	Four Layers Soft Film Anti-explosion Film (0.65mm)

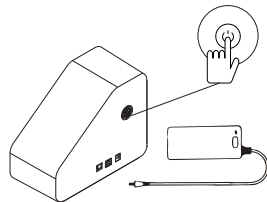
Instructions

I Install the blade holder



Tips: The blade will gradually become dull when use a lot, which affects the cutting quality, it is recommended to replace it in time

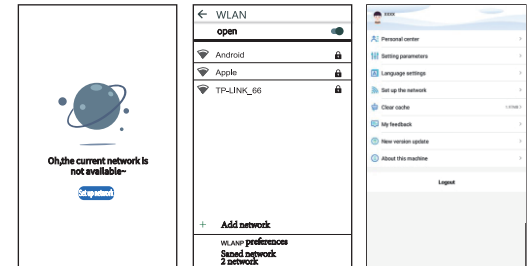
II Power connection, Starting up



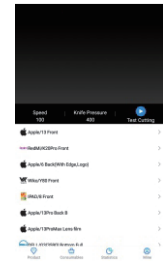
Please use AC 100-240V : connect the adapter and power cord, and connect the other end of the power cord to AC 100-240V; the adapter's DC output line plug is connected to the input port of the film cutter; install the blade holder to make sure it is fixed at the right position of the carriage head. After the connection and installation are completed, press the power button to start the device.

III Screen film cutter machine operation

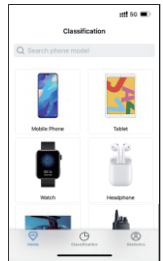
When using it for the first time, click "Set Network" to complete the wifi connection, click "Mine" in the lower function bar, and find "Select Language" to complete the language setting.



After the system starts normally, enter the homepage

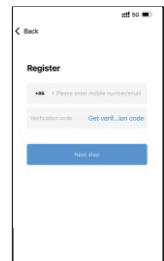


Enter keywords in the search box, search for the product model you need to cut, and select the corresponding model.

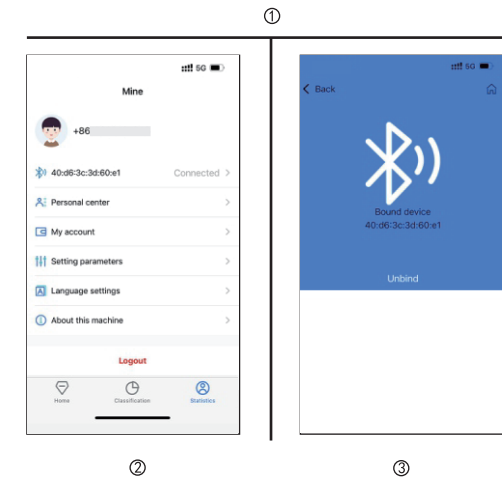
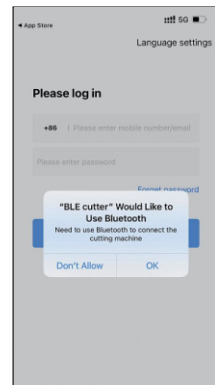


IV Bluetooth connection

- Download the app with the QR code, and register an account after entering the app
- Enter the phone number, get the verification code, and click Next
 - The dealer is the company code, fill in your registration password, and log in!

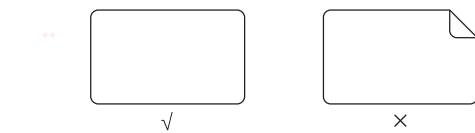


Log in to the app page, the app will prompt to turn on Bluetooth, enter the interface, click on the function bar "Mine" to enter the operating platform, click on "My device" to enter the link Bluetooth page.



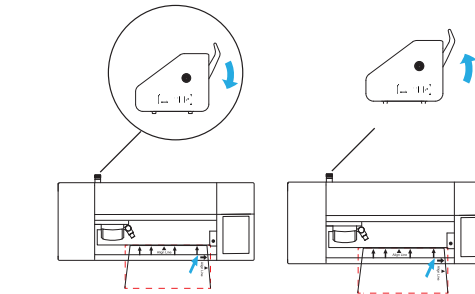
V Cutting film

1. Please prepare a protective film to be cut as shown in the picture to ensure that the protective film is flat and the film layer is complete without bending, folding or missing layers.

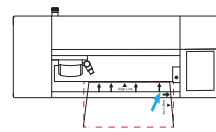


2. Without automatic paper feeding:

- ① Press down the pressure bar to raise the pinch roller, put protective film in the dotted area.
- ② Raise the pressure bar to make the pinch roller press the protective film.



3. With automatic paper feeding: Push the protective film smoothly to the dotted area to let go.



4. After checking that the protective film is properly placed, select the desired protective film model in the display screen of the film cutting machine or through Bluetooth in the APP interface, and click "start cutting" to cut.



5. After the cutting finished, the protective film will be automatically pushed out, take out the protective film, and complete the cutting.

VI The content of the manual will be revised irregularly according to product upgrades, which may be different from the actual product. Please refer to the actual product. Please forgive us for any inconvenience caused!

Product parameter	
Panel	5.5" Colorful HD screen
Internet access	802.11n Wireless LAN
Power adapter input	100-240V, 1.5A 50-60Hz
Power adapter output	24V 2A DC
Device input	24V 2A DC
Power	48W

Notice

	Avoid scratching your fingers
	The working environment where the machine is placed must be clean and tidy to prevent metal liquids from falling into the machine and cause fires, and there must be enough installation space.
	It is forbidden to damage or replace the original power cord. Do not excessively bend, pull, bind, or press the power cord under heavy objects to prevent damage to the power supply and cause electric shock or fire.
	If you do not use the machine for a long time, please disconnect the machine power to prevent fire.
	The table where the machine is placed must be flat and stable to prevent the machine from falling.
	When you want to disconnect the power, please grip under the plug and pull it out. Do not pull the cable. Forcibly pulling the cable may cause electric shock or fire.
	Prohibited to use during thunderstorms to avoid being hit by lightning
	Prohibit unauthorized disassembly



Scan the QR code, please download the film cutting machine App according to the prompts

FCC Statement

This equipment has been tested and found to comply with the limits for a Class B digital device, pursuant to part 15 of the FCC Rules. These limits are designed to provide reasonable protection against harmful interference in a residential installation. This equipment generates, uses and can radiate radio frequency energy and, if not installed and used in accordance with the instructions, may cause harmful interference to radio communications. However, there is no guarantee that interference will not occur in a particular installation. If this equipment does cause harmful interference to radio or television reception, which can be determined by turning the equipment off and on, the user is encouraged to try to correct the interference by one or more of the following measures:

- Reorient or relocate the receiving antenna.
- Increase the separation between the equipment and receiver.
- Connect the equipment into an outlet on a circuit different from that to which the receiver is connected.
- Consult the dealer or an experienced radio/TV technician for help.

Caution: Any changes or modifications to this device not explicitly approved by manufacturer could void your authority to operate this equipment. This device complies with part 15 of the FCC Rules. Operation is subject to the following two conditions: (1) This device may not cause harmful interference, and (2) this device must accept any interference received, including interference that may cause undesired operation.

RF Exposure Information

This equipment complies with FCC radiation exposure limits set forth for an uncontrolled environment. This equipment should be installed and operated with minimum distance 20cm between the radiator and your body.