



Small assistant specifications

10.1" tea helper
User Manual



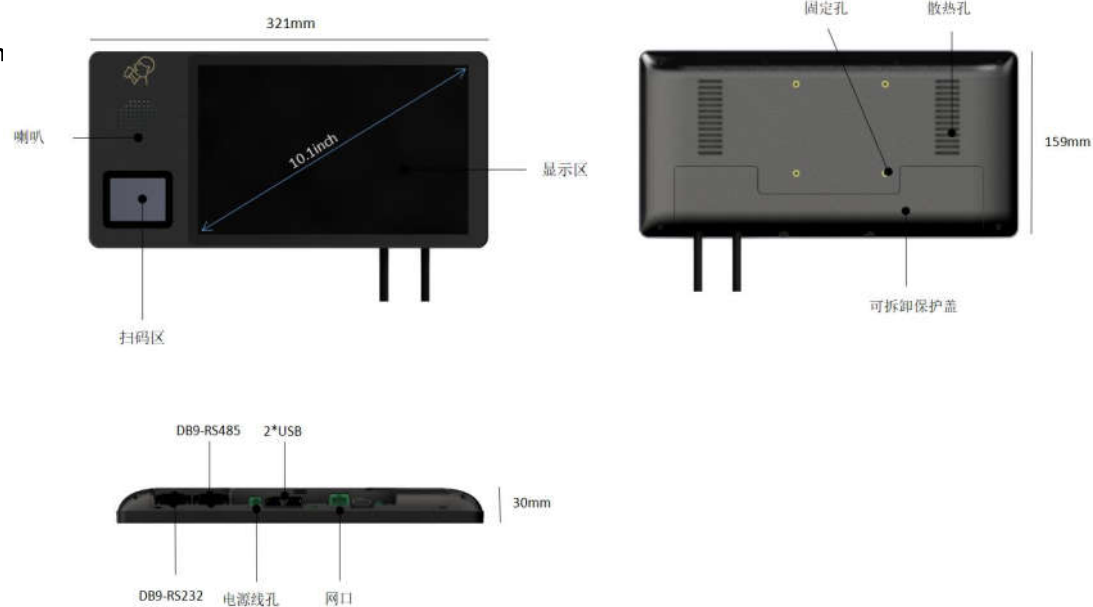
Product features that.....	1
Equipment and the function introduction...	2
Technical parameters...	3
Safety test project...	4
Equipment Operation Process - Use the process.....	5
The installation process...	6
Using considerations...	7
Software usage...	8

➤ Product Function description



1, Little assistant

1) Size drawing and function



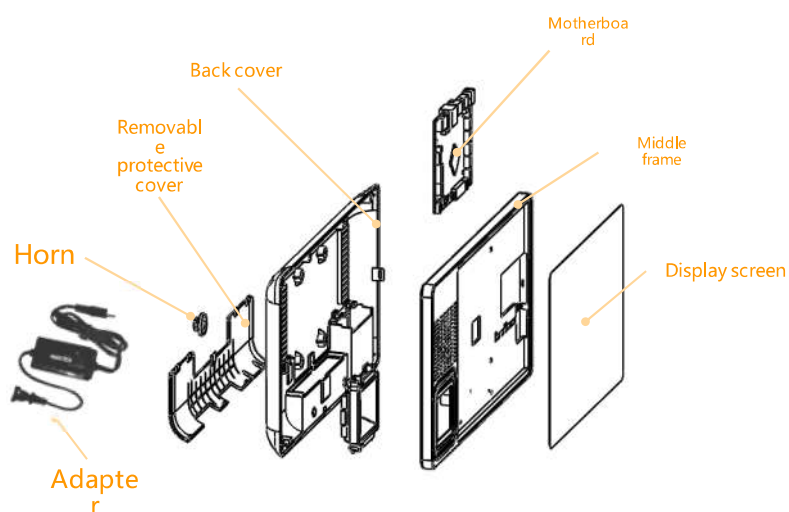
> A brief introduction of the equipment and functions



Equipment introduction:

This equipment is a small assistant for tea making, mainly used for making tea with different tastes, can realize the scan order code can display small material varieties, equipped with the scan code gun, horn and other hardware.

In order to facilitate your use, please read the instruction manual carefully before use, and use according to the instructions. Due to the improvement of the product, the product you purchased may not be exactly the same as the illustration in the manual.



➤ Technical parameters

Model number	10.1 "Little Helper KDS	Console weight	300kg
Rated voltage	DC12 V	Rated power	10W
Size	321*159*30mm		

➤ Safety test items:

Safety test items		Technical index		Remarks
Insulation requirements	UL Insulation Requirements	TUV insulation requirements	CCC Insulation Requirements	Enhanced insulation
Input to output	For example: 1600Vac	3000Vac	3000Vac	Basic insulation
Input pair housing				Reinforced insulation
Input against the heating disc				Additional insulation
Output pair housing				Functional insulation
Insulation resistance	Ω 10 m or higher			25A/1min
Note: 1. Ground resistance	If the product meets the relevant EMC standards, the EMC test of the terminal equipment system needs to be re-confirmed in combination with the whole system.			220Vac
2. Leakage current	During the voltage test, please short circuit between LN, short circuit between positive and negative output lines, short circuit between positive and negative light modulation.			0.65 or less mA

3. CCC voltage test should disconnect the built-in detonator, according to IEC 60598-1:2014 standard 10.2, mark "built-in detonator" on the nameplate to disconnect the discharge tube test.

➤ Operation process - Use process



1. Turn on the power and view the network status icon

2. Click to enter the "Tea Assistant"

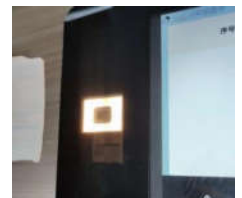
3. Scan the order code to display the ingredients



Small tea helper icon



Go to the Little Helper software



Scan the order code



序号	名称	用量	编号	名称	用量
S040100005	芝士	1.0平芝士勺 顶料	M011300116	草莓原浆	80.0
S040100126	鲜制草莓果茸	2平咖啡勺	M011400533	蔗糖	100.0
			S040100006	绿妍茶汤	80.0

Click on the top right corner to display tea drink ingredients

序号	名称	用量
S040100005	芝士	1.0平芝士勺 顶料
S040100126	鲜制草莓果茸	2平咖啡勺

Scan the code to display the order ingredients

► Installation process



1. Mix AB glue and evenly apply it to the bottom of the stainless steel mounting plate. Press the mounting plate to the stainless steel table for 1 minute. It takes 30 minutes for the glue to set.

2. Adjust the hex socket screws of the three support joints, and screw the small assistant screen to the top edge of the screen at 1400mm above the ground. When the screw is smooth, the needle is loosened and tightened counterclockwise (function: adjust the tension of the small assistant before and after stretching the joint)

Four M6 screws are used to fix the support to the base, and then the base is attached to the wall, which must be steel plate or tile surface

4 M4 screws to secure the screen to the front of the bracket



The special wall can be fixed with expansion screws, equipped with two M6*40mm expansion screws. The depth of the wall must be 55-65mm, and the diameter of the hole must be 10mm. Before the hole drilling, ensure that the wall is a solid cement brick wall with a thickness greater than 100mm. Note: this bracket can only be installed on the wall, and the installation must be shown in the figure, base long rectangular convex side perpendicular to the ground, on the adjusting screw Kong Chao.

Equipment maintenance and maintenance



Equipment maintenance and maintenance system

In order to ensure that the equipment is often in a good technical state, ensure the safety and stable operation of the equipment, improve the integrity rate of the equipment, extend the service life of the equipment, reduce the operation and maintenance costs of the equipment, combined with the relevant provisions in the instruction manual of various types of equipment, according to the use of the equipment of our company, the mechanical equipment maintenance system is as follows:

1. Special person is responsible for the maintenance of each equipment;
2. The operator should carefully maintain, correctly use the equipment, strictly abide by the operating procedures, and the operating parameters should meet the requirements of the equipment;

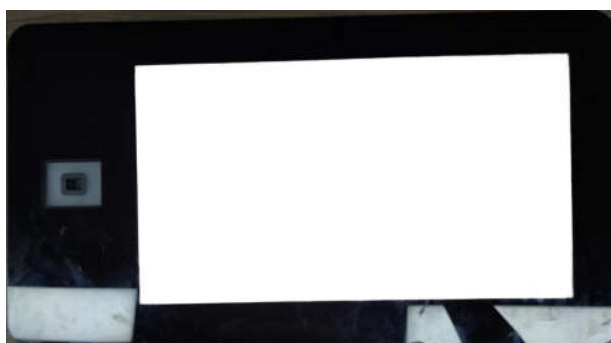
➤ Common fault handling - abnormal screen



Abnormal Screen

Fault phenomenon: the screen is black, blinks or fails, and does not respond to touch

Solution: ① Restart the power supply of the device, if it is still faulty, please report to the after-sales maintenance (please wait for 1 minute after the power is turned off during the restart and then turn on the power)



The screen touch fails

➤ Precautions



Precautions

- 1, if the product has an external adjustable potentiometer, please adjust the current, it is recommended to use 704 silicone will adjust the current
The hole is sealed and the waterproof electric box is covered.
- 2, when the light regulation is not used, please seal the light regulation connector with an insulating sleeve to avoid interfering with the signal guide
Cause dimming line damage, affect the normal work of the power supply.

Packaging

- The dimensions of the packing box are (unit: mm) : length x width x height = 560*360*400mm;
- The packing quantity of each box is 1 set;
- Single net weight: 2kg; FCL gross weight: 20 kg;

shipping

Suitable for car, boat, plane transport, transport should be covered, sun protection, civilized loading and unloading.

Store

The product shall be stored in accordance with GB 3873-83.

The products with a storage period of more than 1 year should be re-inspected before they can be used.

Shenzhen Huiling Technology (Shenzhen) Co., LTD

Huiling-tech Robotic Co.,Ltd

Second floor, Building E, Huafeng International Robot Industrial Park, Hangcheng Avenue, Xixiang Street, Baoan District, Shenzhen City, Guangdong Province

Tel: 0755-36382405 Email: hitbot@hitbot.cc Website: www. hitbot. com

FCC Warning:

This equipment has been tested and found to comply with the limits for a Class B digital device, pursuant to part 15 of the FCC Rules. These limits are designed to provide reasonable protection against harmful interference in a residential installation. This equipment generates, uses and can radiate radio frequency energy and, if not installed and used in accordance with the instructions, may cause harmful interference to radio communications. However, there is no guarantee that interference will not occur in a particular installation. If this equipment does cause harmful interference to radio or television reception, which can be determined by turning the equipment off and on, the user is encouraged to try to correct the interference by one or more of the following measures:

- Reorient or relocate the receiving antenna.
- Increase the separation between the equipment and receiver.
- Connect the equipment into an outlet on a circuit different from that to which the receiver is connected.
- Consult the dealer or an experienced radio/TV technician for help.

Caution: Any changes or modifications to this device not explicitly approved by manufacturer could void your authority to operate this equipment.

This device complies with part 15 of the FCC Rules. Operation is subject to the following two conditions:

(1) This device may not cause harmful interference, and (2) this device must accept any interference received, including interference that may cause undesired operation.

This equipment complies with FCC radiation exposure limits set forth for an uncontrolled environment. This equipment should be installed and operated with minimum distance 20cm between the radiator and your body.

ISED Statement

- English: This device complies with Industry Canada license-exempt RSS standard(s). Operation is subject to the following two conditions: (1) This device may not cause interference, and (2) This device must accept any interference, including interference that may cause undesired operation of the device.

The digital apparatus complies with Canadian CAN ICES-3 (B)/NMB-3(B).

- French: Le présent appareil est conforme aux CNR d'Industrie Canada applicables aux appareils radio exempts de licence. L'exploitation est autorisée aux deux conditions suivantes: (1) l'appareil ne doit pas produire de brouillage, et (2) l'utilisateur de l'appareil doit accepter tout brouillage radioélectrique subi, même si le brouillage est susceptible d'en compromettre le fonctionnement.

L'appareil numérique du CIEM conforme canadien peut - 3 (b) / nmb - 3 (b).

This device meets the exemption from the routine evaluation limits in section 2.5 of RSS 102 and compliance with RSS 102 RF exposure, users can obtain Canadian information on RF exposure and compliance.

Cet appareil est conforme à l'exemption des limites d'évaluation courante dans la section 2.5 du CNR - 102 et conformité avec RSS 102 de l'exposition aux RF, les utilisateurs peuvent obtenir des données canadiennes sur l'exposition aux champs RF et la conformité.

This equipment complies with Canada radiation exposure limits set forth for an uncontrolled environment.

This equipment should be installed and operated with minimum distance 20cm between the radiator & your body.

Cet équipement est conforme Canada limites d'exposition aux radiations dans un environnement non contrôlé.

Cet équipement doit être installé et utilisé avec une distance minimale de 20 cm entre le radiateur et votre corps.