

Remote Programming Introduction (RQBK10)

Note:The remote control is **not original** remote control, it is just a replacement. When programming the remote control, please carefully read the following **manual** and watch the programming **video**.



YouTube programming video:

<https://youtu.be/F0ZPg4ZGAHk>

Scan the QR code, watch programming video



Due to the different models of garage door openers, the programming method may vary. When programming **fails**, please refer to the **original** manual of the door **opener**.

Programming steps:

Step1: Locate **Learn button** on the garage door opener. And confirm the color. The learn button has **5 colors**:



Learn button

The learn button has **5 colors**:

Yellow, Purple, Red, Orange, Green

Step3: Press and release the remote control button you wish to use the number of times that corresponds with the garage door opener type:

Color of opener learn button	Press times
Yellow	1
Purple	2
Red / Orange	3
Green	4



Example: If learn button of opener is **red**, press the button **three** times.

Step5: Press and release the Learn button on the garage door opener. The Learn LED will light. Within **30** seconds...

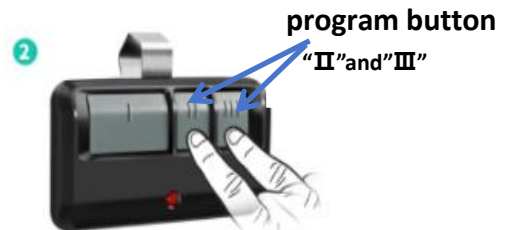


Attention:

Step 5, please refer to the programming method in the door opener manual.

Some door openers, such as model LiftMaster **8500** \ Chamberlain **RJO20 RJO70 RJO101**, Press the door **control panel** LEARN button **twice**, and the red learn LED will turn on.

Step2: Press and **hold** the **program button** at the **same time** the remote control **until** the LED on the front of the remote control **turns on**, then **flash 4 times and off**. Now turn to step 3 quick.



Step4: To exit programming mode, press any remote control button **except** the button that was just programmed.



Note: Don't miss this step!

Step6: Press and **hold** the remote control button programmed in **step 3** **until** the garage door opener lights flash or two clicks are heard.



HOW TO USE THE REMOTE CONTROL

Press and **hold** the button down **until** the door or gate starts to move.

Do not release the remote button at once(Avoiding accidental button presses).



Troubleshooting

Solution1: Your garage door must be closed before you start to program remote, otherwise programming maybe failed.

Solution2: Try to program the remote using other button of the remote.

Solution3: Please first get close to garage door opener when you program remote.

Solution4: Maybe the memory of the opener is full, please clear it then program again.

Method: Press and hold the learn button on garage door opener for several seconds until LED off then release. Then all memory is cleared.

Note: The old remote will also be cleared, please program again.

Solution5: For some garage door opener with the **red** or **orange** learn button, such as model is **41A5021** or **41A5483**, please choose one of the following solutions:

① Try to select the **Yellow** learn button type;

② please first erase all receiver codes, then continue to program the remote.

Solution6: If you **think** your opener's learn button is **red**, but it can't program successfully by using **red learn button** type, maybe it has a possibility:

The color of the learn button is faded, it maybe **purple learn button**. Please try to program the item by using **purple learn button type**.

Solution7: Attention: For programming step 5, please refer to the programming method in the door opener manual. Some door

openers, such as model

LiftMaster

8500\Chamberlain RJO20

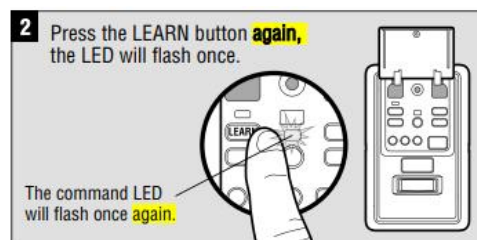
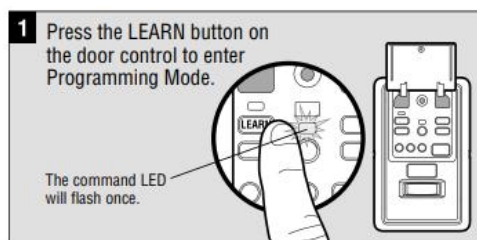
RJO70 RJO101, in **step 5** of

programming, Press the

door control panel LEARN

button **twice**, and the red

learn LED will turn on.



BATTERY



Pry open the case first in the middle, then at each side with the visor clip.

Battery: CR2032 3V

⚠ WARNING

- **INGESTION HAZARD:** This product contains a button cell or coin battery.
- **DEATH** or serious injury can occur if ingested.
- A swallowed button cell or coin battery can cause **Internal Chemical Burns** in as little as **2 hours**.
- **KEEP** new and used batteries **OUT OF REACH** of **CHILDREN**
- **Seek immediate medical attention** if a battery is suspected to be swallowed or inserted inside any part of the body.



- a) Remove and immediately recycle or dispose of used batteries according to local regulations and keep away from children. Do NOT dispose of batteries in household trash or incinerate.
- b) Even used batteries may cause severe injury or death.
- c) Call a local poison control center for treatment information.
- d) The compatible battery type **CR2032 3V**.
- e) Non-rechargeable batteries are not to be recharged.
- f) Do not force discharge, recharge, disassemble, above 60°C/140°F or incinerate. Doing so may result in injury due to venting, leakage or explosion resulting in chemical burns.

When replace the battery ,please notice as below:

- a) Ensure the batteries are installed correctly according to polarity (+ and -).
- b) Do not mix old and new batteries, different brands or types of batteries, such as alkaline, carbon-zinc, or rechargeable batteries.
- c) Remove and immediately recycle or dispose of batteries from equipment not used for an extended period of time according to local regulations.
- d) Always completely secure the battery compartment. If the battery compartment does not close securely, stop using the product, remove the batteries, and keep them away from children.



WARNING

INGESTION HAZARD: This product contains a button cell or coin battery.

FCC Caution:

This device complies with part 15 of the FCC Rules. Operation is subject to the following two conditions:

- (1) This device may not cause harmful interference, and
- (2) this device must accept any interference received, including interference that may cause undesired operation.

Any changes or modifications not expressly approved by the party responsible for compliance could void the user's authority to operate the equipment.

NOTE: This equipment has been tested and found to comply with the limits for a Class B digital device, pursuant to Part 15 of the FCC Rules. These limits are designed to provide reasonable protection against harmful interference in a residential installation. This equipment generates, uses and can radiate radio frequency energy and, if not installed and used in accordance with the instructions, may cause harmful interference to radio communications. However, there is no guarantee that interference will not occur in a particular installation.

If this equipment does cause harmful interference to radio or television reception, which can be determined by turning the equipment off and on, the user is encouraged to try to correct the interference by one or more of the following measures:

- Reorient or relocate the receiving antenna.
- Increase the separation between the equipment and receiver.
- Connect the equipment into an outlet on a circuit different from that to which the receiver is connected.
- Consult the dealer or an experienced radio/TV technician for help.

The device has been evaluated to meet general RF exposure requirement. The device can be used in portable exposure condition without restriction.

FCC ID: 2BDFR-RQBK10